

## Product datasheet for MR224606

### Idh3b (NM\_130884) Mouse Tagged ORF Clone

#### Product data:

Product Type:	Expression Plasmids
Product Name:	Idh3b (NM_130884) Mouse Tagged ORF Clone
Tag:	Myc-DDK
Symbol:	Idh3b
Synonyms:	C78231
Mammalian Cell Selection:	Neomycin
Vector:	pCMV6-Entry (PS100001)
E. coli Selection:	Kanamycin (25 ug/mL)
ORF Nucleotide Sequence:	>MR224606 ORF sequence Red=Cloning site Blue=ORF Green=Tags(s)

TTTTGTAATACGACTCACTATAGGGCGGCCGGAATTCGTCGACTGGATCCGGTACCGAGGAGATCTGCC  
GCC**CGATCGCC**

ATGGCAGCGCTGAGCAATGTCCGCTGGCTGACCCGAGCGGTGCTCGCCGCTCGGAACTCCGGGGCATGGA  
GAGGTCTCGAACATCTACGGCTCACGCCGTTCCAGAGCCAGGCACAAGATGTGAGGGTGAGGGTGC  
CTTTCCTGTGACCATGCTGCCTGGAGACGGCGTGGGGCCAGAGCTCATGCATGCTGTCAAGGAAGTGTTC  
AAGGCTGCTGCTCCCTGTGGAATTTAAGGAGCATCATCTGAGCGAGGTGCAGAATATGGCTTCTGAGG  
AGAAGCTGGAGCAGGTGCTGAGTCCATGAAGGAGAACAAGTTGCCATCATTGGAAAGATCTATACCCC  
AATGGAGTATAAGGGTGAAGTAGCCTCCTATGATATGCAGCTGAGGCGTAAGTTGGATTTGTTTCCAAC  
GTAGTCCACGTGAAGTCACTTCCCTGGATACAAGACTCGGCACAACAATCTAGACCTGGTTATCATTCCGAG  
AGCAGACAGAAGGGGAGTATAGCTCTCTGGAACATGAGAGCGCCAAGGGTGTCAATTGAGTGCCTGAAGAT  
CGTCACTCGCACCAAGTCTCAGAGGATTGCAAAGTTTGCCTCGACTATGCCACCAAGAAAGGGCGGAGC  
AAGGTCACAGCCGTCATAAAGCCAACATCATGAACTAGGGGATGGCTTGTCTTGCAGTGTGTGAGG  
AAGTTGCTGAAGTGTACCCTAAAATCAAGTTTGAACCATGATCATAGACAACCTGCTGCATGCAGCTGGT  
GCAGAACCCTTACCAGTTTGTGCTCGTGTGATGCCAATCTCTATGGCAACATAATTGACAATCTGGCT  
GCTGGCCTTGTGGGGAGCTGGCGTGGTTCCTGGGGAGAGCTACAGTGCAGAGTATGCAGTTTTGGAGA  
CGGGTGTCTCGGCACCCATTTGCCAGGCAGTGGGCAGGAATATAGCCAACCCACAGCCATGCTGCTGTCT  
CGCCACCAACATGCTGCGGCATCTCAATCTTGAGTATCACTCCAGCATGATTGCAGATGCAGTGAAGAAA  
GTGATCAAAGCTGGCAAGGTACGGACTCGAGACATGGGAGGCTACAGCACCACAACCTGACTTCATCAAGT  
CTGTATCGGCCACCTGCACCCCATGGGGC

**ACGCGT**ACGCGGCCGCTCGAGCAGAACTCATCTCAGAAGAGGATCTGGCAGCAATGATATCCTGGATT  
ACAAGGATGACGACGATAAGGTTTAA



[View online »](#)

**Protein Sequence:** >MR224606 protein sequence  
 Red=Cloning site Green=Tags(s)

MAALSNVRWLTRAVLAARNSGAWRGLGTSTAAHASQSQAQDVRVEGAFPVTMLPGDGVGPELMHAVKEVF  
 KAAAVPVEFKEHHLSEVQNMASEEKLEQVLSSMKENKVAIIGKIYTPMEYKGLASYDMQLRRKLDLDFAN  
 VVHVKSPLPGYKTRHNLDLVIIREQTEGEYSLSLEHESAKGVIECLKIVTRTKSQRIAKFAFDYATKKGRS  
 KVTAVHKANIMKLDGLFLQCCEEVAELYPKIKFETMIIDNCCMLVQNPYQFDVLMVLPNLYGNIIDNLA  
 AGLVGGAGVVPGESYSAEYAVFETGARHPFAQAVGRNIANPTAMLLSATNMLRHLNLEYHSSMIADAVKK  
 VIKAGKVRTRDMGGYSTTTDFIKSVIGHLHPHGG

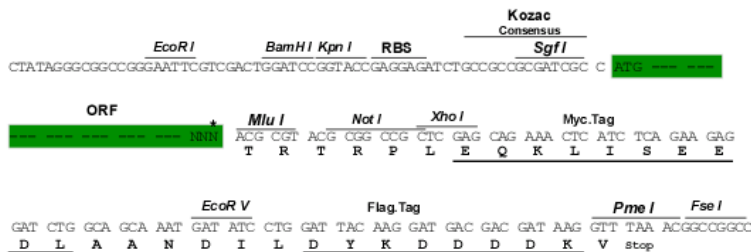
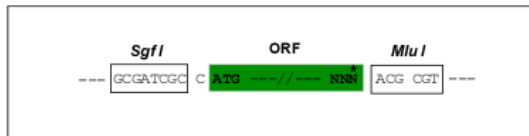
TRTRPLEQKLISEEDLAANDILDYKDDDDKV

**Restriction Sites:**

SgfI-MluI

**Cloning Scheme:**

Cloning sites used for ORF Shuttling:



\* The last codon before the Stop codon of the ORF

**ACCN:** NM\_130884

**ORF Size:** 1155 bp

**OTI Disclaimer:** The molecular sequence of this clone aligns with the gene accession number as a point of reference only. However, individual transcript sequences of the same gene can differ through naturally occurring variations (e.g. polymorphisms), each with its own valid existence. This clone is substantially in agreement with the reference, but a complete review of all prevailing variants is recommended prior to use. [More info](#)

**OTI Annotation:** This clone was engineered to express the complete ORF with an expression tag. Expression varies depending on the nature of the gene.

**Components:** The ORF clone is ion-exchange column purified and shipped in a 2D barcoded Matrix tube containing 10ug of transfection-ready, dried plasmid DNA (reconstitute with 100 ul of water).

**Reconstitution Method:**

1. Centrifuge at 5,000xg for 5min.
2. Carefully open the tube and add 100ul of sterile water to dissolve the DNA.
3. Close the tube and incubate for 10 minutes at room temperature.
4. Briefly vortex the tube and then do a quick spin (less than 5000xg) to concentrate the liquid at the bottom.
5. Store the suspended plasmid at -20°C. The DNA is stable for at least one year from date of shipping when stored at -20°C.

**RefSeq:** NM\_130884.2

**RefSeq Size:** 1520 bp

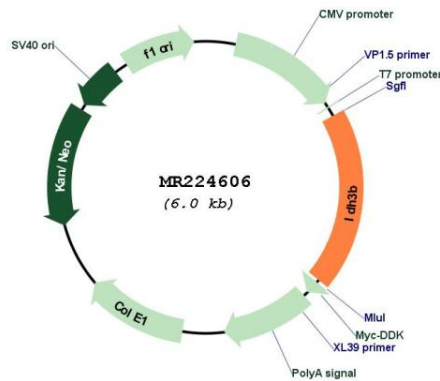
**RefSeq ORF:** 1155 bp

**Locus ID:** 170718

**Cytogenetics:** 2 F1

**MW:** 42.2 kDa

**Product images:**



Circular map for MR224606