

Product datasheet for MR224466

Pex14 (NM_019781) Mouse Tagged ORF Clone

Product data:

Product Type:	Expression Plasmids
Product Name:	Pex14 (NM_019781) Mouse Tagged ORF Clone
Tag:	Myc-DDK
Symbol:	Pex14
Synonyms:	Pex14p; R75137
Mammalian Cell Selection:	Neomycin
Vector:	pCMV6-Entry (PS100001)
E. coli Selection:	Kanamycin (25 ug/mL)
ORF Nucleotide Sequence:	>MR224466 ORF sequence Red=Cloning site Blue=ORF Green=Tags(s)

TTTTGTAATACGACTCACTATAGGGCGGCCGGAATTCGTCGACTGGATCCGGTACCGAGGAGATCTGCC
GCC**CGATCGCC**

ATGGCGTCGTCGGAGCAGGCAGAGCAGCCGAACCAGCCAAGCTCTCCTCCAGGAAGTAAAAATGTGGTGC
CCCAGAGCCACTGATTGCCACAGCAGTGAAGTTCCTACAGAATTCTCGGGTCCGGCAGAGCCCCTTGC
GACCAGGAGAGCATTCTTAAGAAGAAAGGACTGACAGACGAAGAGATTGACCTGGCTTCCAGCAGTCG
GGCACAGCTGCCAGCAGCCTTACCCCTGGGCCAGCTACCCAGTGGTTCCTGTCCAGCCCCCTCACC
TACTCCGCAGCCATACAGCCCCAGAGGCTCCCGATGGCGAGATTATGGTGCCTTGGCTATCATCATGGC
AGGAATTGCATTTGGCTTTCACCAACTCTACAAGAGGTACCTGCTGCCCTCATCCTGGGAGGCCGAGAG
GACAGAAAGCAGCTGGAGAGGATGGCAGCGAGTCTCTCGAACTGAGTGGCACCCGTGGCCAGACAGTGA
CTCAGGTGCAGACAACACTGGCCTCTGTCCAAGAGCTACTGAGACAGCAGCAGCAGAAGTCCAGGAGCT
AGCTCACGAGCTGGCCACTGCCAAGGCCACCACATCAACCAACTGGATCCTGGAGTCCCAGAATATTAAT
GAGCTCAAGTCGGAAATCAACTCCTTGAAGGACTTCTTTGAATCGGAGACAGTTCCTCCTCCCCGT
CGGCCCGAAGATCCCCTCCTGGCAGATCCCAGTGAAGTCTTATCACCCCTCCAGCCCTGCGGCTGTCAA
CCACCACAGCAGCAGTACATCTCCCCTGTCAGCAACGAGTCTACGTATCCTCTCCTGGGAAGGACAGC
CACAGCCCGGAGGGCTCCACGGCCACATACCACCTGCTGGTCCCAGGAAGAGGGTGAAGGGGTGCTAG
ATGTCAAGGCCAGGTGAGGATGGAGGTGCAGGGTGGAGGAGAGAAGAGGGAGGACAAGGAGGATGAGGA
CGATGAGGATGATGACGTGAGCCATGTGGATGAGGAGGACGTCCTTGGGTGCAGAGGGAGGCCAGCG
GGCGCGATGGGCAGATCAATGAGCAGGTAGAGAAGCTGCGGCCGCGGAAGGTGCCAGCAATGAGACTG
AGCGAGAC

ACGCGTACGCGGCCGCTCGAGCAGAACTCATCTCAGAAGAGGATCTGGCAGCAATGATATCCTGGATT
ACAAGGATGACGACGATAAGGTTTAA



[View online »](#)

Protein Sequence: >MR224466 protein sequence
Red=Cloning site Green=Tags(s)

MASSEQAEPNQPSPPGSENVVPREPLIATAVKFLQNSRVRQSPLATRRRAFLKKKGLTDEEIDLAFQQS
 GTAADEPSPLGPATPVVPVQPPHLPQPYSPRGRWRDYGALAIIMAGIAFGFHQLYKRYLLPLILGGRE
 DRKQLERMAASLSELSGTVAQTVTQVQVTTLASVQELLRQQQKQVQELAHHELATAKATTSTNWILESQIN
 ELKSEINSLKGLLLNRRQFPPSPSAPKIPSWQIPVKSSSPSSPAAVNHSSSDISPVSNESTSSSPGKDS
 HSPGSTATYHLLGPQEEGEGVLDVKGQVRMEVQGEEEKREDEDEDDDDVSHVDEEDVLGVQREDRR
 GGDGQINEQVEKLRRPEGASNETERD

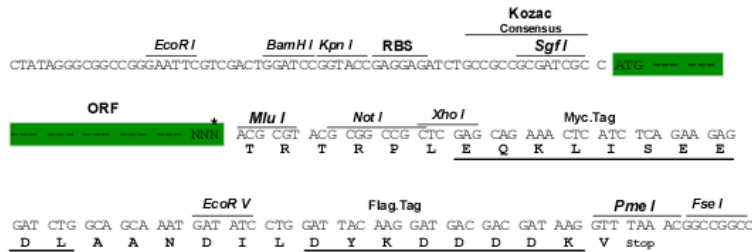
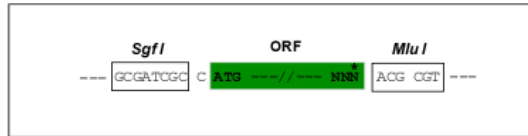
TRTRPLEQKLISEEDLAANDILDYKDDDDKV

Restriction Sites:

SgfI-MluI

Cloning Scheme:

Cloning sites used for ORF Shuttling:



* The last codon before the Stop codon of the ORF

ACCN: NM_019781

ORF Size: 1131 bp

OTI Disclaimer: The molecular sequence of this clone aligns with the gene accession number as a point of reference only. However, individual transcript sequences of the same gene can differ through naturally occurring variations (e.g. polymorphisms), each with its own valid existence. This clone is substantially in agreement with the reference, but a complete review of all prevailing variants is recommended prior to use. [More info](#)

OTI Annotation: This clone was engineered to express the complete ORF with an expression tag. Expression varies depending on the nature of the gene.

Components: The ORF clone is ion-exchange column purified and shipped in a 2D barcoded Matrix tube containing 10ug of transfection-ready, dried plasmid DNA (reconstitute with 100 ul of water).

- Reconstitution Method:**
1. Centrifuge at 5,000xg for 5min.
 2. Carefully open the tube and add 100ul of sterile water to dissolve the DNA.
 3. Close the tube and incubate for 10 minutes at room temperature.
 4. Briefly vortex the tube and then do a quick spin (less than 5000xg) to concentrate the liquid at the bottom.
 5. Store the suspended plasmid at -20°C. The DNA is stable for at least one year from date of shipping when stored at -20°C.

RefSeq: [NM_019781.3](#)

RefSeq Size: 1942 bp

RefSeq ORF: 1131 bp

Locus ID: 56273

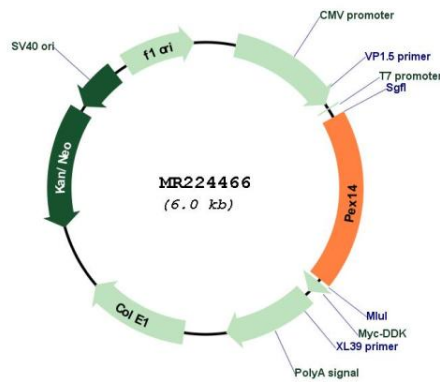
UniProt ID: [Q9R0A0](#)

Cytogenetics: 4 E2

MW: 41.2 kDa

Gene Summary: Peroxisome membrane protein that is an essential component of the peroxisomal import machinery. Functions as a docking factor for the predominantly cytoplasmic PTS1 receptor (PEX5). Plays a key role for peroxisome movement through a direct interaction with tubulin. [UniProtKB/Swiss-Prot Function]

Product images:



Circular map for MR224466