

Product datasheet for **MR224432**

Lgi2 (NM_144945) Mouse Tagged ORF Clone

Product data:

Product Type:	Expression Plasmids
Product Name:	Lgi2 (NM_144945) Mouse Tagged ORF Clone
Tag:	Myc-DDK
Symbol:	Lgi2
Synonyms:	mKIAA1916
Mammalian Cell Selection:	Neomycin
Vector:	pCMV6-Entry (PS100001)
E. coli Selection:	Kanamycin (25 ug/mL)



[View online »](#)

ORF Nucleotide Sequence:

>MR224432 representing NM_144945
 Red=Cloning site Blue=ORF Green=Tags(s)

TTTTGTAATACGACTCACTATAGGGCGGCCGGGAATTCGTCGACTGGATCCGGTACCGAGGAGATCTGCC
 GCC**CGCATCGCC**

ATGGCGCTATGGAGAGGGCGGGCGCTGGGGTTGCTGCTGCTGAGCGCCGCTGCCTCATCCCGCGA
 GCGCGCAGGTGAGGCGGTTGGCGCGCTGCCCGCCACTTGCAGCTGTACCAAGGAGTCCATCATCTGCGT
 GGGCTCCTCTTGGGTGCCTAGGATCGTGCCTGGCGACATCAGCTCCCTGAGCCTAGTAAATGGAACATTT
 CTGAAATCAAGGACCGAATGTTTTCCACCTGCCCTCTCTGCAGCTGCTATTGCTGAATTTAACTCAT
 TCACGGTGATCCGGGACGATGCCTTTGTGGCCTTTTTTCATCTTGAATACCTGTTCAATGAAGGGAACA
 AATAGAAACCATTTCAAGAAATGCCTTTTCGGGGCCTCCGTGACCTGACTCACCTAGACTTAAAGGGTAAT
 AAATTTGAATGTGACTGCAAAGCCAAATGGCTGTATCTATGGCTGAAGATGACAACTCCACCGTCTCTG
 ATGTGCTGTATCGGTCCACCAGAATACCAGGAGAAGAACTCAACGAAGTGACCAGCTTTGACTATGA
 GTGTACCACCACAGGTCCCAGACTGATGAAGCCAAGCAGAGAGGATGGCAGTTGAACTCTCCCTGGGA
 TTTTGTGAACTAATATTTGTTTTCAACACCCACTCTCAGATTTTGTGCTTCATCAGACTCTGCCGTACC
 AGTCGGTGTGAGTACAGCTTCAACTCCAAGAACGATGTGTACGTGGCCATCGCTCAGCCCAGCATGGA
 GAACTGCATGGTGTGGAGTGGGACCACATAGAAATGAATTTCCGGAGTTATGACAATATCACAGGCCAG
 TCCATCGTGGGCTGCAAGGCCATCCTCATTGACGACCAGGTCTTTGTGGTGGTGGCCAGCTCTTCGGTG
 GCTCTCACATTTACAAATACGACGAGAGCTGGACCAAGTTTGTCAAGTTCCAAGACATAGAGGTGTCTCG
 GATTTCCAAGCCCAACGACATTGAGCTGTTGAGATCGACGACGAGACCTTCTTCATCATCGCCGACAGC
 TCCAAAGCGGGGCTGTCCACAGTTTACAAGTGGAAACAGCAAAGGGTTTACTCTACCAGTCACTACATG
 AGTGTTCAGGGACACAGATGCGGAGTTTGTGACATCGACGGGAAGTCTCACCTCATCTGTCTAGCCG
 CTCCAGGTCCCACATCATCCTGCAGTGGAAATAAAGTTCCAAGAAGTTTGTCCCCCATGGTGACATCCCC
 AATATGGAGGATGTGCTGGCTGTGAAGACTTCCGGATGCAGAACACCCTCTACCTTTCCCTCACCCGTT
 TCATTGGGACTCGCGGTGATGCGTTGGAACAGTAAGCAGTTTGTGGAGTCCAGGCTCTTCTTCCCG
 GGGGGCTATGACCTTGAACCCTTCTCCTTCAAAGATAACCACTACCTGGCCCTGGGGAGTGACTACAG
 TTCTCACAGATCTACCAGTGGGATAAAGAGAAACAGCAGTTTAAAAAGTTTAAAGAAATCTATGTGCAGG
 CGCCTCGTCTTACAGCCGTCTCCACCACAGGAGAGATTTCTTTTTGCATCCAGTTTCAAAGGGAA
 GACAAAGATTTTGAACATATCATTGTTGATTTAAGTTTG

ACGCGTACGCGGCCGCTCGAGCAGAAACTCATCTCAGAAGAGGATCTGGCAGCAAATGATATCCTGGATT
 ACAAGGATGACGACGATAAGGTTTAA

Protein Sequence:

>MR224432 representing NM_144945
 Red=Cloning site Green=Tags(s)

MALWRGGGALGLLLLAAACLIPPSAQVRRRLARCPATCSCTKESIIICVGSWVPRIVPGDISSLVNGTF
 LEIKDRMFSHLPSLQLLLLNSNSFTVIRDDAFAGLFHLEYLFIEGKNIETISRNAFRGLRDLTHLDRGN
 KFECDCKAKWLYLWKMTNSTVSDVLCIGPPEYQEKLNVEVTSFDYECTTGPQTDEAKQRGWQLELSLG
 FCLEIFVFQHPLSDFVHVHQLPYQSVSDVTFNSKNDVYVAIAQPSMENCMLVLEWDHIEMNFRSYDNITGQ
 SIVGCKAILIDDQVFVVVAQLFGGSHIYKYDESWTKFVKFQDIEVSRISKPNDELFEIDDETFIAD
 SKAGLSTVYKWNKGFYSYQSLHEWFRDTEAFVDIDGKSHLILSSRSQVPIILQWNKSSKFFVPHGDIP
 NMEDVLAVKSRMQNTLYLSLTRFIGDSRVMRWNSKQFVEVQALPSRGAMTLQPF SFKDNHYLALGSDYT
 FSQIYQWDKEKQKFKEIYVQAPRSFTAVSTDRRDFFFASSFKGKTKIFEHIIVDLSL

TRTRPLEQKLISEEDLAANDILDYKDDDDKV

Chromatograms:

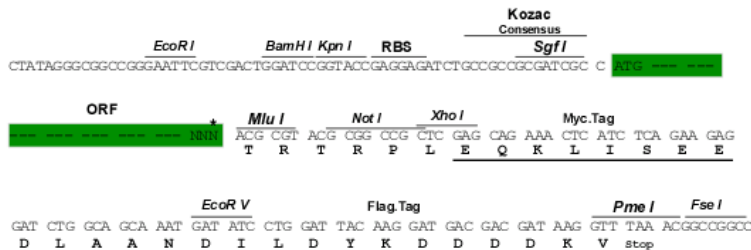
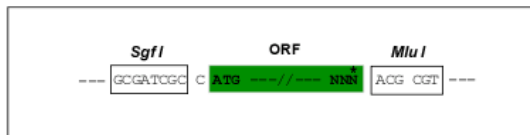
https://cdn.origene.com/chromatograms/mm9007_f10.zip

Restriction Sites:

SgfI-MluI

Cloning Scheme:

Cloning sites used for ORF Shutting:



* The last codon before the Stop codon of the ORF

ACCN: NM_144945

ORF Size: 1650 bp

OTI Disclaimer: The molecular sequence of this clone aligns with the gene accession number as a point of reference only. However, individual transcript sequences of the same gene can differ through naturally occurring variations (e.g. polymorphisms), each with its own valid existence. This clone is substantially in agreement with the reference, but a complete review of all prevailing variants is recommended prior to use. [More info](#)

OTI Annotation: This clone was engineered to express the complete ORF with an expression tag. Expression varies depending on the nature of the gene.

Components: The ORF clone is ion-exchange column purified and shipped in a 2D barcoded Matrix tube containing 10ug of transfection-ready, dried plasmid DNA (reconstitute with 100 ul of water).

Reconstitution Method:

1. Centrifuge at 5,000xg for 5min.
2. Carefully open the tube and add 100ul of sterile water to dissolve the DNA.
3. Close the tube and incubate for 10 minutes at room temperature.
4. Briefly vortex the tube and then do a quick spin (less than 5000xg) to concentrate the liquid at the bottom.
5. Store the suspended plasmid at -20°C. The DNA is stable for at least one year from date of shipping when stored at -20°C.

RefSeq: [NM_144945.3](#), [NP_659194.1](#)
RefSeq Size: 1927 bp

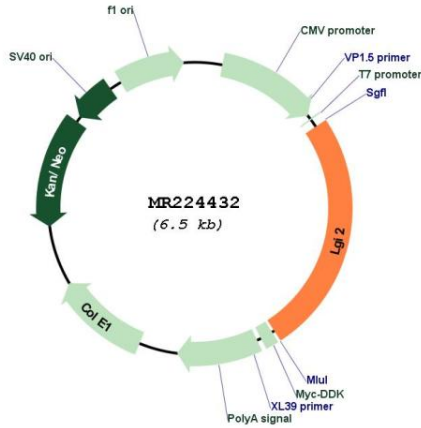
RefSeq ORF: 1653 bp

Locus ID: 246316

UniProt ID: [Q8K4Z0](#)

Cytogenetics: 5 C1
MW: 63.5 kDa
Gene Summary: Required for the development of soma-targeting inhibitory GABAergic synapses made by parvalbumin-positive basket cells.[UniProtKB/Swiss-Prot Function]

Product images:



Circular map for MR224432