

Product datasheet for MR224392

Spock1 (NM_001166464) Mouse Tagged ORF Clone

Product data:

Product Type: Expression Plasmids
Product Name: Spock1 (NM_001166464) Mouse Tagged ORF Clone
Tag: Myc-DDK
Symbol: Spock1
Synonyms: Spock; testican; Ticn1
Mammalian Cell Selection: Neomycin
Vector: pCMV6-Entry (PS100001)
E. coli Selection: Kanamycin (25 ug/mL)
ORF Nucleotide Sequence: >MR224392 representing NM_001166464
 Red=Cloning site Blue=ORF Green=Tags(s)

GACGTTGTATACGACTCCTATAGGGCGGCCGGAATTCGTCGACTGGATCCGGTACCGAGGAGATCTGCC
 GCCGGCGGCC

ATGCCAGCGATCGCGGTGCTCGCGGCCGCCGCGGCGTGGTCTTCTCCAAGTGGACAGCCGGCACC
 TGGACGCGCTGGCCGGTGGCGGCCCTCAACAACGCCAATTTCCCTAGACAATGACCAGTGGCTGAGCAC
 TGTCTCCAGTATGACCGTGACAAGTACTGGAACCGCTCCGAGATGAAGTTGAGGATGACTATTTCAGA
 AACTGGAATCCCAACAAGCCCTTCGACCAAGCCCTGGACCCATCCAAGGACCCCTGCCTGAAGGTGAAAT
 GCAGCCCGCACAAGTATGTGTGACCCAGGACTACCAGACGGCTCTGTGTGTCAGCCGCAAGCACCTGTT
 GCCCAGGCAGAAGAAGGGCAATGTGGCTCACAACACTGGCTTGGACCTTCCAATCTGGTTAAGTGAAG
 CCTTGCCCGTGGCGCAGTCAGCGATGGTCTGCGGCTCTGACGGCCACACGTACACGTCCAAGTGAAGT
 TGGAAATCCACGCTTGTCTACAGGCCAAAAGCCTCAACTCCCTCTGTGATGGGCCCTGTCCGTGTCTGCC
 TGAGCCTGAGCCACTGAAGCCAAAGCAGAGAAGAGTGCCTGCACGGACAAGGAGCTGCGGAACCTCGCC
 TCCCGCTGAAGGACTGGTTCGGGGCTCTTCATGAGGACGCCAATAGAGTCATCAAGCCTACCAGCTCTG
 ATCCAGCCCAAGGCAGGTTTGACACCAGCATCTTACCCATTTGCAAGGACTCCTTGGGTTGGATGTTCAA
 CAAGTTGGACATGAACTATGACCTGTTGCTGGACCACTCAGAGATCAATGCCATCTACCTAGACAAATAT
 GAGCCCTGCATCAAGCCTCTTCAACTGTGCGACTCCTTCAAGGACGGCAAACCTCCAACAATGAGT
 GGTGTTACTGCTCCAGAAGCCAGCGGGTCTCCCTTGCCAGAATGAAATGAACAGAATTCAGAAGCTAAG
 CAAGGGGAAAAGCCTACTGGAAACAACCTTGGAAAATGGGACCGTGCCACACGGCTGAGTGTGCATCAA
 TTTCTTCTCTCTGTGGAGGAGTTCGTGGGTTCTTCCATCCATCGTCAG

ACGCGTACGCGGCCGCTCGAGCAGAACTCATCTCAGAAGAGGATCTGGCAGCAATGATATCCTGGATT
 ACAAGGATGACGACGATAAGGTTAA



[View online »](#)

Protein Sequence: >MR224392 representing NM_001166464
Red=Cloning site Green=Tags(s)

MPAIAVLAAAAAWCFLQVDSRHLDALAGGAALNNANFLDNDQWLSTVSQYDRDKYWNFRFRDEVEDDYFR
 NWNPNKPFQALDPSKDPCLKVKCSPHKVCVTQDYQTALCVSRKHLLPRQKKGNAVHKHWLGPSNLVKCK
 PCPVAQSAMVCGSDGHTYTSKCKLEFHACSTGKSLNSLCDGPCPLPEPEPLKPKAEKSACTDKELRNLA
 SRLKDWFGALHEDANRVIKPTSSDPAQGRFDTSILPICKDSLGMFNKLDMNYDLLLLDHSEINAIYLDKY
 EPCIKPLFNSCDSFKDGLSNNEWCYCFQKPAGLPCQNMENRIQKLSKGKSLLGTTLENGTVPTRLSVHQ
 FLLSLWRSSWVLPiHRQ

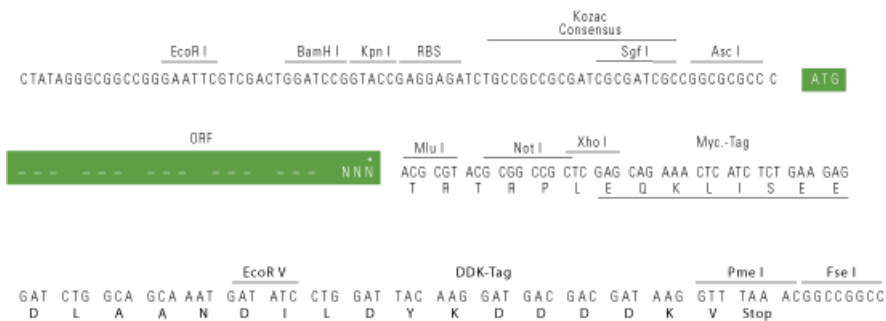
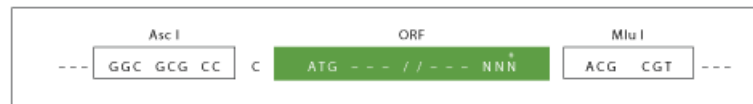
TRTRPLEQKLISEEDLAANDILDYKDDDDKV

Restriction Sites:

AscI-MluI

Cloning Scheme:

Cloning sites used for ORF Shuttling:



* The last codon before the Stop codon of the ORF

ACCN: NM_001166464

ORF Size: 1101 bp

OTI Disclaimer: The molecular sequence of this clone aligns with the gene accession number as a point of reference only. However, individual transcript sequences of the same gene can differ through naturally occurring variations (e.g. polymorphisms), each with its own valid existence. This clone is substantially in agreement with the reference, but a complete review of all prevailing variants is recommended prior to use. [More info](#)

OTI Annotation: This clone was engineered to express the complete ORF with an expression tag. Expression varies depending on the nature of the gene.

Components: The ORF clone is ion-exchange column purified and shipped in a 2D barcoded Matrix tube containing 10ug of transfection-ready, dried plasmid DNA (reconstitute with 100 ul of water).

Reconstitution Method:

1. Centrifuge at 5,000xg for 5min.
2. Carefully open the tube and add 100ul of sterile water to dissolve the DNA.
3. Close the tube and incubate for 10 minutes at room temperature.
4. Briefly vortex the tube and then do a quick spin (less than 5000xg) to concentrate the liquid at the bottom.
5. Store the suspended plasmid at -20°C. The DNA is stable for at least one year from date of shipping when stored at -20°C.

RefSeq: [NM_001166464.1](#), [NP_001159936.1](#)

RefSeq Size: 3140 bp

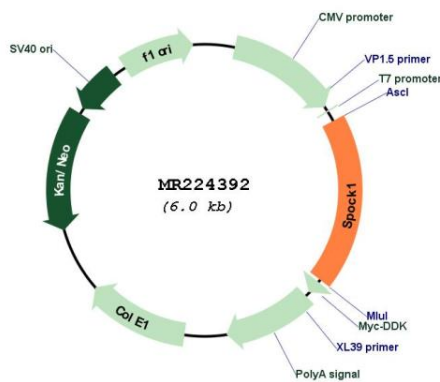
RefSeq ORF: 1104 bp

Locus ID: 20745

Cytogenetics: 13 B1

MW: 41.8 kDa

Product images:



Circular map for MR224392