

## Product datasheet for **MR224382**

### Tnnt2 (NM\_001130175) Mouse Tagged ORF Clone

#### Product data:

**Product Type:** Expression Plasmids  
**Product Name:** Tnnt2 (NM\_001130175) Mouse Tagged ORF Clone  
**Tag:** Myc-DDK  
**Symbol:** Tnnt2  
**Synonyms:** cTnT; Tnt  
**Mammalian Cell Selection:** Neomycin  
**Vector:** pCMV6-Entry (PS100001)  
**E. coli Selection:** Kanamycin (25 ug/mL)  
**ORF Nucleotide Sequence:** >MR224382 representing NM\_001130175  
Red=Cloning site Blue=ORF Green=Tags(s)

TTTTGTAATACGACTCACTATAGGGCGGCCGGAATTCGTCGACTGGATCCGGTACCGAGGAGATCTGCC  
GCC**CGATCGCC**

ATGCCCTGCCCTCAGCCAGTCCCTGCTGAGGCTGAACAGATACCTCAAGACCTGTGTGCAGTCCCTGTTC  
AGAGAGCCGAGAGCATGTCTGACCCGAGGAGGTGGTGGAGGAGTACGAGGAGGAACAGGAAGAAGCTGT  
GGAAGAGGAAGACTGGAGTGAAGAAGAGGAGGACGAGCAAGAGGAGGCAGTGGAGGAGGAGGAGGCTGGT  
GGGGCTGAACCTGAGCCTGAGGGTGAAGGCTGAGACAGAGGAGGCCAACGTAAGAAGGTTGGTCTGATG  
AAGAAGCCAAAGATGCTGAAGAAGTCCAGTAGAGGACACCAACCAAGCCAGCAGGCTCTTCATGCC  
CAACTTGGTGCCACCCAAGATCCCCGATGGAGAGAGAGTGGACTTTGATGACATCCACAGGAAGCGCGTG  
GAGAAGGACCTGAATGAGCTACAGACTCTGATCGAGGCTCACTTCGAGAACAGGAAGAAGGAGGAAGAGG  
AGCTGATTTCCCTCAAAGACAGGATCGAAAAGCGTCGGGCAGAGCGGGCCGAGCAGCAGCGTATTCGCAA  
TGAGCGGGAGAAGGAAAGGCAGAACCGCTGGCTGAAGAGAGGGCCCGCGTGAGGAGGAGGAGAACAGG  
AGGAAGGCTGAGGATGAGGCCGGAAGAAGAAGGCTCTGTCCAACATGATGCACTTTGGAGGGTACATCC  
AGAAGACAGAGCGGAAGAGTGGGAAGAGACAGACAGAGAGAGAGAAGAAGAAGAAGTCTTGGCAGAGAG  
GAGGAAGGCGCTGGCCATCGACCACCTGAATGAAGACCAACTGAGAGAGAAGGCCAAGGAGCTGTGGCAG  
AGTATTCACAACCTGGAGGCTGAGAAGTTCGACCTGCAGGAAAAGTTCAAGCAGCAGAAATACGAAATCA  
ACGTTCTGCGAAAACCGGATCAATGACAACCAGAAAGTCTCCAAAACCTCGTGGGAAGGCCAAAGTCACCGG  
GCGTTGGAAA

**ACGCGT**ACGCGGCCGCTCGAGCAGAAACTCATCTCAGAAGAGGATCTGGCAGCAAATGATATCCTGGATT  
ACAAGGATGACGACGATAAGGTTTAA



**Protein Sequence:** >MR224382 representing NM\_001130175  
Red=Cloning site Green=Tags(s)

MPCPQVPVPAEAEQIPQDLCAVPVQRAESMSDAEEVVEEYEEEQEEAVEEEDWSEEEEDQEEAVEEEEEAG  
 GAPEPEGEAEETEEANVEEVGPDEEAKDAEEGVEDTKPKPSRLFMPNLVPPKIPDGERVDFDDIHRKRV  
 EKDLNELQTLIEAHFENRKKEEELISLKDRIEKRRRAERAEQQRIRNEREKERQNRLAEEERARREEEENR  
 RKAEDEARKKKALSMMHFGGYIQKTERKSGKRQTEREKKKKILAERRKALAIIDLHNLNEDQLREKAKELWQ  
 SIHNLEAEKFDLQEKFKQKYEINVLRNRINDNQKVSKTRGKAKVTGRWK

TRTRPLEQKLISEEDLAANDILDYKDDDDKV

**Restriction Sites:** SgfI-MluI

**Cloning Scheme:**

Cloning sites used for ORF Shuttling:



\* The last codon before the Stop codon of the ORF

**ACCN:** NM\_001130175

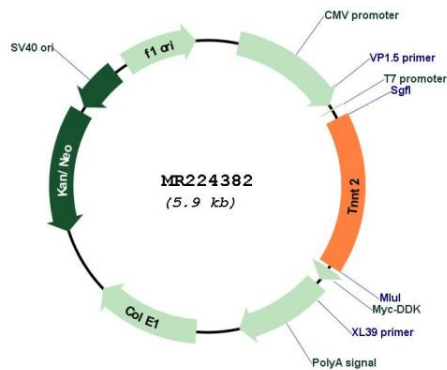
**ORF Size:** 990 bp

**OTI Disclaimer:** Due to the inherent nature of this plasmid, standard methods to replicate additional amounts of DNA in E. coli are highly likely to result in mutations and/or rearrangements. Therefore, OriGene does not guarantee the capability to replicate this plasmid DNA. Additional amounts of DNA can be purchased from OriGene with batch-specific, full-sequence verification at a reduced cost. Please contact our customer care team at [custsupport@origene.com](mailto:custsupport@origene.com) or by calling 301.340.3188 option 3 for pricing and delivery.

The molecular sequence of this clone aligns with the gene accession number as a point of reference only. However, individual transcript sequences of the same gene can differ through naturally occurring variations (e.g. polymorphisms), each with its own valid existence. This clone is substantially in agreement with the reference, but a complete review of all prevailing variants is recommended prior to use. [More info](#)

**OTI Annotation:** This clone was engineered to express the complete ORF with an expression tag. Expression varies depending on the nature of the gene.

<b>Components:</b>	The ORF clone is ion-exchange column purified and shipped in a 2D barcoded Matrix tube containing 10ug of transfection-ready, dried plasmid DNA (reconstitute with 100 ul of water).
<b>Reconstitution Method:</b>	<ol style="list-style-type: none"> <li>1. Centrifuge at 5,000xg for 5min.</li> <li>2. Carefully open the tube and add 100ul of sterile water to dissolve the DNA.</li> <li>3. Close the tube and incubate for 10 minutes at room temperature.</li> <li>4. Briefly vortex the tube and then do a quick spin (less than 5000xg) to concentrate the liquid at the bottom.</li> <li>5. Store the suspended plasmid at -20°C. The DNA is stable for at least one year from date of shipping when stored at -20°C.</li> </ol>
<b>RefSeq:</b>	<u>NM_001130175.2, NP_001123647.4</u>
<b>RefSeq Size:</b>	1198 bp
<b>RefSeq ORF:</b>	993 bp
<b>Locus ID:</b>	21956
<b>Cytogenetics:</b>	1 59.32 cM
<b>MW:</b>	39.4 kDa
<b>Gene Summary:</b>	Troponin T is the tropomyosin-binding subunit of troponin, the thin filament regulatory complex which confers calcium-sensitivity to striated muscle actomyosin ATPase activity. [UniProtKB/Swiss-Prot Function]

**Product images:**


Circular map for MR224382