

## Product datasheet for MR224375

### Ptpru (NM\_001083119) Mouse Tagged ORF Clone

#### Product data:

Product Type:	Expression Plasmids
Product Name:	Ptpru (NM_001083119) Mouse Tagged ORF Clone
Tag:	Myc-DDK
Symbol:	Ptpru
Synonyms:	Ftp-1; PCP-2; Pcp2; PTP; PTP-lambda; Ptpf; PTPlambda; Ptpri; R-PTP-psi; R-PTP-U; RPTPlambda
Mammalian Cell Selection:	Neomycin
Vector:	pCMV6-Entry (PS100001)
E. coli Selection:	Kanamycin (25 ug/mL)
ORF Nucleotide Sequence:	>MR224375 representing NM_001083119 Red=Cloning site Blue=ORF Green=Tags(s)

TTTTGTAATACGACTCACTATAGGGCGGCCGGAATTCGTCGACTGGATCCGGTACCGAGGAGATCTGCC  
GCC**CGATCGCC**

ATGGCCCCGGCTCAGGCTCTGGTCTGGCGCTCACCTTCCAGTTCTGCGCGCTGAGACCGAGACTCCCG  
CAGCTGGCTGCACCTTCGAGGAGGCGAGTGACCCGGTCGTGCCCTGCGAGTTCAGCCAGGCTCAGTATGA  
CGACTTCAATGGGAGCAAGTCCGGATCCACCCGGCACCCGGACCCCTGAAGACCTGCCCCATGGTGCC  
TACTTGATGGTCAATGCTTCTCAGCATGCCCCAGGTGAGGGCCACATCATCTCCAGACCCTGAGCG  
AGAACGACACCCATTGTGTGCAGTTCAGTACTTCTGTACAGCAGGGATGGGCACAGCCAGGCACCCCT  
GGGGTCTACGTGCGCGTGAATGGGGGCCCTCTGGGCAGTGCCGTGTGGAATATGACCGGATCCACGGC  
CGTCAGTGGCACCAGGCTGAGCTGGCTGTGACACCTTCTGGCCCAATGAGTATCAGGTGCTGTTTGAGG  
CCCTCATCTCCCCAGACCACAAGGGCTACATAGGCTTAGACGACATCTTGCTCTTCAGCTATCCCTGCGC  
AAAGGCCCTCACTTCTCCCGCTTGGGGACGTGGAGGTCAATGCAGGCCAGAACGCATCCTTCCAATGC  
ATGGCAGCAGGCAGAGCCGAGAGGCAGAACACTTCTTCTGCAGCGTCAGAGTGGAGTGTGGTGCCTG  
CGCCGGGGTGCAGCACATCAGCCACCGTCGCTTCTGGCCACTTTTCCGCTGGCCTCGGTAGGCCGCTC  
AGAGCAGGATCTGTACCCTTGCCTGTCCAGGCCCGCGTGGTGTGGCTCTCCAACCTTGCAGAGCTC  
ATCGTCAAAGAGCCTCCACCCCATCGCGCCCCACAGCTGCTGCGTGCAGGCCACCTACCTCATT  
TCCAGTCAACACCAACTCCATCATTGGCGACGGGCCGATCGTGCGAAGGAGATCGAGTACCGCATGGC  
ACGGGGCCCGTGGGCCGAGGTGCACGCTGTCAACCTGCAGACCTACAAGCTGTGGCATCTGGACCCAGAC  
ACTGAGTATGAAATCAGCGTGTGCTCACACGCCCGGAGATGGAGGCACAGGCCGCCCTGGGCCACCAC  
TGATCAGCCGGACCAAGTGCAGAGCCACGAGGGCCCCAAAGGTCTGGCTTTTGTGAGATCCAGGC  
TCGCCAGTGCACCTGCAGTGGGAGCCCTGGGCTATAATGTCACACGTTGTCATACCTACGCTGTGTCC  
CTTTGCTATCGTACACCCTGGGCGGCAGCCACAACCAGACCATCCGGGAGTGTGTAAGATGGAGCGGG  
GTGCCAGCGCTACACCATCAAGAATCTGCTGCCATTAGAAACATCCACGTGCGTCTGATTCTCACAAA  
CCCTGAGGGCGCAAGGAGGGCAAGGAGTCCAGACAGATGAAGATGTGCTGTTGGGATTGCA



[View online »](#)

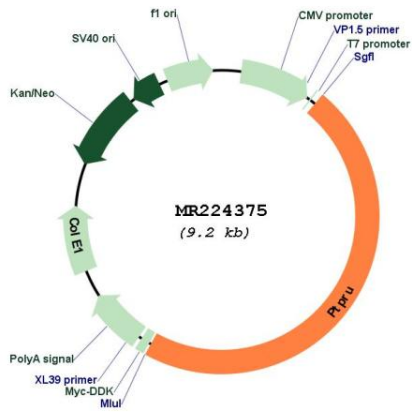
GCTGAGTCCCTAACCTTCACTCCACTGGAGGACATGATCTTTCTCAAGTGGGAGGAGCCCCAGGAGCCCA  
 ATGGCCTCATCACTCAGTATGAGATCAGCTACCAAAGCATTGAGTCTCAGACCCAGCAGTGAACGTGCC  
 CGGCCCGAGACGCACCATCTCCAACTCCGGAATGAGACTTACCACGTCTTCTCCAACTGCATCCCGGC  
 ACCACGTATCTGTTCTCCGTGCGTGTCTCGGACGAGCAAGGGCTTCGGCCAGGCGGCTCTCACTGAGATAA  
 CCACCAACATCTCAGTCCCAGCTTTGATTATGCCGACATGCCGTACCCCTGGGCGAGTCCGAGAACAC  
 CATCACTGTGCTGTTGAGGCCGGCCAGGGCCAGGAGCCCCATCAGCGTCTACCAGGTGGTTGTGGAG  
 GAAGACGGCCACGGCGCTTTCGGCGGGAGCCCGGAGCTCAGGACTGCTTCTCGGTACCTCTGACCTTTG  
 AGACGGCCCTGGCTCGCGCCTGGTGCCTACTTTGGGGCTGAACTGGCTGCCAGCAGCCTGCTTGAGGC  
 CATGCCCTTACCCTGGGTGACAACCAGACCTATCGTGGCTTCTGGAACCCACCGCTTGAGCCAGAAAAG  
 GCCTATCTCATCTATTTCCAGGCAGCAAGCCACCTGAAAGGGGAAACCCGACTGAACTGCATCCGAATTG  
 CCAGGAAAGCTGCGTGAAGGAGAGCAAGCACCCTCGAAGTGTCCAGAGATCGGAGGAGATGGGGCT  
 CATCTGGGCATCTGTGACGGTGGTCTTGCCGTCTTCTCTCTCTGGGGCCATCATTGTCATCATC  
 CGCAAAGGGAGGGACCGCTATGCCTACTTACTACCCGAAGCCAGTGAACATGACGAAAGCCACGGTCA  
 ACTACCGCAGGAGAAGACTCACATGATGAGTGGCGTGGACCGCAGCTTACAGATCAGAGTACTCTGCA  
 GGAGGATGAGCGTTGGGTCTGTCTTTATGGATGCTCCTGGCTATAGTCTCGTGGAGACCAGCGAAGC  
 GGTGGTGTCAACGAGCCAGCAGCTCCTGGGGGTTCTCAAGGCGCCATGCGCCGGGAGGGTTCTC  
 CGTATCATACCGGCAGCTCCACCTGCAGTCCGAGTGGCTGACCTTCTACAGCAGATCAACCAGATGAA  
 GACAGCCGAGGGCTACGGCTTCAAGCAGGAGTACGAGAGTTTCTTTGAGGGCTGGGACGCCACCAAGAAG  
 AAAGACAAGCTCAAGGGCGGCCACAGGAGCCAGTGTCTGCCTATGATCGACACCATGTGAAACTACACC  
 CGATGCTGGCAGACCTGATGCCACTACATCTCTGCAAACATACAGACGGCTACCACAGGTCAAACCA  
 CTTATAGCCACTCAAGGGCCAAAGCCTGAGATGATCTACGATTTCTGGCGCATGGTGTGGCAGGAACAG  
 TGTGCGAGCATCGTATGATCACCAGCTGGTAGAGGTGGCAGGGTGAAGTGTCTCGTACTGGCCTG  
 AGGACTCAGACATGTATGGGACATCAAGATCAGCTGGTAAAGACAGAGACACTGGTGAATGTGGT  
 GCGCACCTTTGCCCTGGAGCGGAGAGTTACTCAGCCCGCATGAGGTCCGCCAGTTCATTTACAGCG  
 TGCCAGAGCATGGTGTCCCTACCACGCCACGGGCTGCTGGCCTTCTCCGGCGTGTGAAGGCTTCCA  
 CTCCACCTGATGCCGGGCCATTGTCACTTCACTGCAGTGCAGGAACTGGCCGCACAGGCTGCTACATCGT  
 CCTGGATGTGATGCTGGACATGGCTGAATGTGAGGGGTCGTGGACATTTAACTGTGTGAAGACCCTC  
 TGTTCCCGACGGGTCAACATGATCCAGACGGAGGAACAATATCTTATCCACGATGCAATCTGGAGG  
 CCTGCCTGTGTGGGAGACCACCATCCCTGTCAACGAGTTCAGGCCACCTACAGGGAGATGATCCGCAT  
 TGACCCTCAGAGCAATTCCTCCAGCTTCGGGAAGAGTTCAGACGCTGAACTCGGTACGCCGCCGCTG  
 GATGTGGAGGAGTAGCATTGCCCTGCTGCCCGGAATCGAGACAAGAACCAGTACATGGATGTGCTGC  
 CACCAGACCGCTGCCTGCCCTTCTCATCTCCAGTATGAGGGACCCCAATAACTACATCAATGCAGCACT  
 GACTGACAGCTACACACGGAGCGCCGCTTCTCATCGTGACCTGCACCCGCTGCAGAGTACCACGCCCGAC  
 TTCTGGCGGCTGGTCTACGACTACGGGTGCACCTCCATCGTATGCTGAACCAACTTAACCAGTCCAACT  
 CCGCCTGGCCCTGCTTGCAGTACTGGCCGGAGCCAGGCCGACAGCAGTATGGGCTCATGGAGGTGGAGTT  
 TGTGTCTGGCACAGAAACGAGGATTTGGTGTCCCGAGTGTCCGGGTGCAGAACTTCTCTCGGCTGCAG  
 GAGGGTCACTGCTGGTACGGCACTTCCAGTTTCTGCGTTGGTCTGCTTATCGGGACACGCCCTGACTCCA  
 GGAAGGCCTTTCTGCACCTGTTGGCTGAGGTGGACAAGTGGCAGGCAGAGAGTGGGATGGGCGCACCGT  
 GGTGATTGTCTCAACGGGGTGGCCGAGTGGCACCTTCTGCGCTGTGCCACGGTCTTGAGAGATGATC  
 CGCTGTACAGCCTGGTGGATGTTTTCTTTGCTGCCAAAACACTTCGGAACATAAGCCCAATATGGTGG  
 AGACCATGGATCAGTATCATTTCTGCTACGACGTGCCCTGGAGTACCTGGAGGCTCTGGAGTTGAGA

ACGCGTACGCGGCCGCTCGAGCAGAACTCATCTCAGAAGAGGATCTGGCAGCAATGATATCCTGGATT  
 ACAAGGATGACGACGATAAGGTTTAA



<b>OTI Disclaimer:</b>	The molecular sequence of this clone aligns with the gene accession number as a point of reference only. However, individual transcript sequences of the same gene can differ through naturally occurring variations (e.g. polymorphisms), each with its own valid existence. This clone is substantially in agreement with the reference, but a complete review of all prevailing variants is recommended prior to use. <a href="#">More info</a>
<b>OTI Annotation:</b>	This clone was engineered to express the complete ORF with an expression tag. Expression varies depending on the nature of the gene.
<b>Components:</b>	The ORF clone is ion-exchange column purified and shipped in a 2D barcoded Matrix tube containing 10ug of transfection-ready, dried plasmid DNA (reconstitute with 100 ul of water).
<b>Reconstitution Method:</b>	<ol style="list-style-type: none"><li>1. Centrifuge at 5,000xg for 5min.</li><li>2. Carefully open the tube and add 100ul of sterile water to dissolve the DNA.</li><li>3. Close the tube and incubate for 10 minutes at room temperature.</li><li>4. Briefly vortex the tube and then do a quick spin (less than 5000xg) to concentrate the liquid at the bottom.</li><li>5. Store the suspended plasmid at -20°C. The DNA is stable for at least one year from date of shipping when stored at -20°C.</li></ol>
<b>RefSeq:</b>	<a href="#">NM_001083119.2</a> , <a href="#">NP_001076588.1</a>
<b>RefSeq Size:</b>	5528 bp
<b>RefSeq ORF:</b>	4341 bp
<b>Locus ID:</b>	19273
<b>UniProt ID:</b>	<a href="#">B1AUH1</a>
<b>Cytogenetics:</b>	4 64.5 cM
<b>MW:</b>	162.9 kDa
<b>Gene Summary:</b>	Tyrosine-protein phosphatase which dephosphorylates CTNNB1. Regulates CTNNB1 function both in cell adhesion and signaling. May function in cell proliferation and migration and play a role in the maintenance of epithelial integrity. May play a role in megakaryocytopoiesis (By similarity).[UniProtKB/Swiss-Prot Function]

Product images:



Circular map for MR224375