

Product datasheet for MR224369

Gpm6b (NM_001177958) Mouse Tagged ORF Clone

Product data:

Product Type: Expression Plasmids
Product Name: Gpm6b (NM_001177958) Mouse Tagged ORF Clone
Tag: Myc-DDK
Symbol: Gpm6b
Synonyms: A1593561; Gpm6; M6B
Mammalian Cell Selection: Neomycin
Vector: pCMV6-Entry (PS100001)
E. coli Selection: Kanamycin (25 ug/mL)
ORF Nucleotide Sequence: >MR224369 representing NM_001177958
 Red=Cloning site Blue=ORF Green=Tags(s)

TTTTGTAATACGACTCACTATAGGGCGGCCGGAATTCGTCGACTGGATCCGGTACCGAGGAGATCTGCC
 GCC**CGATCGCC**

ATGAAGCCAGCCATGGAACTGCAGCCGAGGAAAATACTGAACAAAGCCAAGAGAGAAAAGGTTGCTTCG
 AATGCTGCATCAAGTGTCTGGGAGGAGTTCCTATGCCTCCCTGGTGGCCACCATCCTATGTTTCTCTGG
 AGTGGCCTTGTCTGTGGCTGTGGCATGTGGCTCTTGCAGGCACCGTGGCAATCTTGAGCAACACTTC
 TCCACCAACACCAGTGACCATGCCTTGCTGAGTGAAGTGATCCAAGTATGCAGTATGTTATCTATGGAA
 TCGCCTCCTTTTCTTCTGTATGGCATATTCTTCTGGCAGAAGGCTTCTACACCACAAGTGCAGTGAA
 AGAGCTGCACGGTGAGTTTAAAACAAGTGCCTGTGGCCGATGCATCAGTGGAAATGTTTCGTGTTCCCTACC
 TATGTGCTGGGAGTGGCCTGGCTGGGTGTGTTCCGCTTTTCCGCAGTGCCAGTGTATGTTCTACAACA
 TCTGGTCAACCTGTGAAGTCATCAAGTCCCACAAAGCAACGGGACCTCGGGTGTGGAGCAGATCTGTGT
 GGATGTCCGGCAATATGGTATCATTCTTGGAAATGCTTTCCAGGCAAAATCTGTGGCTCGGCCTGGAG
 AACATCTGCAACACGAATGAGTTCTACATGTCTATCACCTGTTTATTGTGGCTTGTGCTGGAGCTGGT
 CCACCGTCATTGCCCTGATCCACTTCTCATGATACTGTCTTCTAACTGGGCTTACTTAAAGGATGCAAG
 CAAAATGCAGGCTTACCAGGATATCAAAGCAAAGGAAGAGCAGGAAGTCAAGATATCCAGTCTCGCTCA
 AAAGAACAACCAATTCTTACT

ACGCGTACGCGGCCGCTCGAGCAGAAACTCATCTCAGAAGAGGATCTGGCAGCAAATGATATCCTGGATT
 ACAAGGATGACGACGATAAGGTTTAA



[View online »](#)

Protein Sequence: >MR224369 representing NM_001177958
 Red=Cloning site Green=Tags(s)

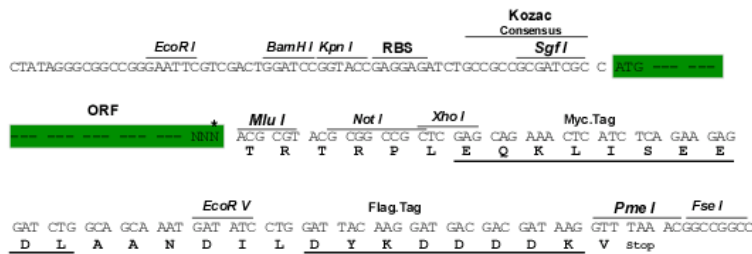
MKPAMETAAEENTEQSQRKGCFECCIKCLGGVPYASLVATILCFSGVALFCGCGHVALAGTVAILEQHF
 STNTSDHALLSEVIQLMQYVIYGIASFFFLYGIILLAEGFYTTSAVKELHGEFKTTACGRCISGMFVFLT
 YVLGVAWLGVFGFSAVPVFMFYNIWSTCEVIKSPQSNGTSGVEQICVDVRQYGIIPWNAFPGKICGSALE
 NICNTNEFYMSYHLFIVACAGAGATVIALIHFLMILSSNWAYLKDASKMQAYQDIKAKEEQELQDIQSR
 KEQLNSYT

TRTRPLEQKLISEEDLAANDILDYKDDDDKV

Restriction Sites: SgfI-MluI

Cloning Scheme:

Cloning sites used for ORF Shuttling:



* The last codon before the Stop codon of the ORF

ACCN: NM_001177958

ORF Size: 864 bp

OTI Disclaimer: The molecular sequence of this clone aligns with the gene accession number as a point of reference only. However, individual transcript sequences of the same gene can differ through naturally occurring variations (e.g. polymorphisms), each with its own valid existence. This clone is substantially in agreement with the reference, but a complete review of all prevailing variants is recommended prior to use. [More info](#)

OTI Annotation: This clone was engineered to express the complete ORF with an expression tag. Expression varies depending on the nature of the gene.

Components: The ORF clone is ion-exchange column purified and shipped in a 2D barcoded Matrix tube containing 10ug of transfection-ready, dried plasmid DNA (reconstitute with 100 ul of water).

Reconstitution Method:

1. Centrifuge at 5,000xg for 5min.
2. Carefully open the tube and add 100ul of sterile water to dissolve the DNA.
3. Close the tube and incubate for 10 minutes at room temperature.
4. Briefly vortex the tube and then do a quick spin (less than 5000xg) to concentrate the liquid at the bottom.
5. Store the suspended plasmid at -20°C. The DNA is stable for at least one year from date of shipping when stored at -20°C.

RefSeq: [NM_001177958.1](#), [NP_001171429.1](#)

RefSeq Size: 3267 bp

RefSeq ORF: 867 bp

Locus ID: 14758

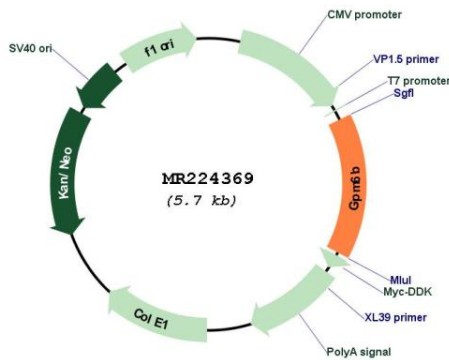
UniProt ID: [P35803](#)

Cytogenetics: X F5

MW: 32.1 kDa

Gene Summary: May be involved in neural development. Involved in regulation of osteoblast function and bone formation. Involved in matrix vesicle release by osteoblasts; this function seems to involve maintenance of the actin cytoskeleton. May be involved in cellular trafficking of SERT and thereby in regulation of serotonin uptake.[UniProtKB/Swiss-Prot Function]

Product images:



Circular map for MR224369