

Product datasheet for MR224365

Tbc1d14 (NM_001113364) Mouse Tagged ORF Clone

Product data:

Product Type: Expression Plasmids
Product Name: Tbc1d14 (NM_001113364) Mouse Tagged ORF Clone
Tag: Myc-DDK
Symbol: Tbc1d14
Synonyms: 2810413P16Rik; AU043625; C86258; D5Ertd110e; mKIAA1322
Vector: pCMV6-Entry (PS100001)
E. coli Selection: Kanamycin (25 ug/mL)
Cell Selection: Neomycin
ORF Nucleotide Sequence: >MR224365 representing NM_001113364
Red=Cloning site Blue=ORF Green=Tags(s)

TTTTGTAATACGACTCACTATAGGGCGGCCGGAATTCGTCGACTGGATCCGGTACCGAGGAGATCTGCC
GCC**CGGATCGCC**

ATGGAATATGAAGACAAGGCTGGAAGACCGAGCAGGCCACCCTCTCCAAGCAGAATGTGAGGAAGAACC
TGGATTTT**GAGCCACTGTCCACCAGGGCGCTCATCCTCGAGGACAGACCTGCAAACTCCCAGCCAAGCC**
AGCTGAAGAAGCTCAAAAGCACAGACAGCAGTATGAAGAGATGGTCTGCAGGCCAAGAAACGAGAGCTT
AAAGAAGCCCAGCGTCGGAGGAAGCAGCTGGAGGAAAGGTGCAAGGTTGAAGAGAGCATTGGGAACGCTG
TCCTCACCTGGAACAATGAGATCTTGCCTAACTGGGAAACCATGTGGTGTCTAAGAAGGTTTCGAGACTT
GTGGTGGCAGGGAATCCCTCCGAGTGTAAAGAGGCAAAGTTTGGAGCTTGGCCATTGGCAACGAGTTGAAC
ATCACTCACGAGCTCTTTGACATCTGTCTTGTCTCGGGCCAAGGAGCGGTGGCGGTCCCTCAGCACTGGAG
GCTCAGAAGTGGAGAATGAAGATGCTGGGTTTTCAGCAGCAGACAGAGAGGCCAGTCTGGAGCTTATTA
ACTGGACATTTCTAGAACATTTCTAATCTCTGCATTTCCAGCAAGGTGGTCCGATCATGACATGTTG
CACAGTATTTGGGCGCTTATACTTGTACCAGGCGGATGTGGTTATGTTAGGATATGCTCATTGAGGTATTC
CTGCAGTGTGATCTTGAACCTCGATACTGCAGATGCCTTTATTGCTTTTTCTAATCTTTGAATAAACC
CTGTCAAATGGCGTTTTTCCGAGTGGACCATGGCCTTATGTTGACTTACTTTGCTGCATTTGAGGTATTC
TTTGAAGAAAACCTTGCCGAAATTGTTTGCACATTTCAAGAAAAACAACCTAACTGCAGATATCTACCTAA
TCGATTGGATTTTACCTTGACAGTAAGTCCCTGCCCTTGGACTTGGCCTGCCGATCTGGGACGTATT
CTGTGAGATGGAGAGGAATTTCTTCCGCACAGCTCTGGGCATCCTGAAGCTTTTTGAAGATACCTG
ACCAGGATGGACTTCATCCACAGTGCCAGTTTCTGACCAGGCTGCCTGAGGACCTGCCCGCAGATGAAG
TGTTTGCAGTATCTCCACAGTCCAGATGCAAAGCCGGAACAAGAAATGGGCACAGGTGCTGTCTGCACT
GCAGAAAGACAGCCGGGAGATGGAGAAAGGAAGCCCATCCCTCAGACAC

ACGCGTACGCGGCCGCTCGAGCAGAAACTCATCTCAGAAGAGGATCTGGCAGCAAATGATATCTGGATT
ACAAGGATGACGACGATAAGGTTTAA



[View online »](#)

Protein Sequence: >MR224365 representing NM_001113364
Red=Cloning site Green=Tags(s)

MEYEDKAGRPSRPPSPKQNVKLNDFEPLSTTALILEDSPANLPAKPAEEAQKHRQQYEEMVLQAKKREL
 KEAQRRRKQLEERCKVEESIGNAVLTWNNEILPNWETMWCSSKVRDLWWQGIPPSVRGKVVSLAIGNELN
 ITHLFDICLARAKERWRSLSSTGGSEVENEDAGFSAADREASLELIKLDISRTFPNLCIFQQGGPYHDM
 HSILGAYTCYRPDVGIVQGMFSIAAVLILNLDTADAFIAFSNLLNKPCQMAFFRVDHGLMLTYFAAFEV
 FEENLPKLFHFHFKNNLTADIYLDWIFTLYSKSLPLDLACRIWDVFCRDGEEFLFRALGILKLFEDIL
 TRMDFIHSQAFLTRLPELPADEVFAAISTVQMQRNKKWAQVLSALQKDSREMEKGSPLRHH

TRTRPLEQKLISEEDLAANDILDYKDDDDKV

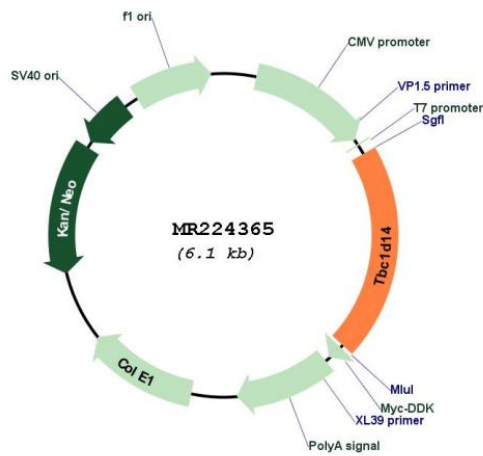
Restriction Sites:

Sgfl-MluI

Cloning Scheme:



Plasmid Map:



ACCN: NM_001113364

ORF Size:	1239 bp
OTI Disclaimer:	The molecular sequence of this clone aligns with the gene accession number as a point of reference only. However, individual transcript sequences of the same gene can differ through naturally occurring variations (e.g. polymorphisms), each with its own valid existence. This clone is substantially in agreement with the reference, but a complete review of all prevailing variants is recommended prior to use. More info
OTI Annotation:	This clone was engineered to express the complete ORF with an expression tag. Expression varies depending on the nature of the gene.
Components:	The ORF clone is ion-exchange column purified and shipped in a 2D barcoded Matrix tube containing 10ug of transfection-ready, dried plasmid DNA (reconstitute with 100 ul of water).
Reconstitution Method:	<ol style="list-style-type: none">1. Centrifuge at 5,000xg for 5min.2. Carefully open the tube and add 100ul of sterile water to dissolve the DNA.3. Close the tube and incubate for 10 minutes at room temperature.4. Briefly vortex the tube and then do a quick spin (less than 5000xg) to concentrate the liquid at the bottom.5. Store the suspended plasmid at -20°C. The DNA is stable for at least one year from date of shipping when stored at -20°C.
RefSeq:	NM_001113364.1 , NP_001106835.1
RefSeq Size:	3897 bp
RefSeq ORF:	1242 bp
Locus ID:	100855
UniProt ID:	Q8CGA2
Cytogenetics:	5 19.15 cM
MW:	48.1 kDa
Gene Summary:	Negative regulator of starvation-induced autophagosome formation.[UniProtKB/Swiss-Prot Function]