

Product datasheet for **MR224350**

Abcc9 (NM_021042) Mouse Tagged ORF Clone

Product data:

Product Type:	Expression Plasmids
Product Name:	Abcc9 (NM_021042) Mouse Tagged ORF Clone
Tag:	Myc-DDK
Symbol:	Abcc9
Synonyms:	AI414027; AI449286; SU; SUR; Sur2; SUR2A; SUR2B
Vector:	pCMV6-Entry (PS100001)
E. coli Selection:	Kanamycin (25 ug/mL)
Cell Selection:	Neomycin
ORF Nucleotide Sequence:	>MR224350 representing NM_021042 Red=Cloning site Blue=ORF Green=Tags(s)

TTTTGTAATACGACTCACTATAGGGCGGCCGGAATTCGTCGACTGGATCCGGTACCGAGGAGATCTGCC
GCC**CGGATCGCC**

ATGAGCCTTTCTTTTGTGGGAACAACATCTCCTCCTACAACATCTATTATGGTGTCTCCAAAACCCCT
GCTTTGTGGAGCAGCACTCAACCTGGTCCCACATGTCTTCTGCTGTTTATCACCTTCCAATACTGTTTCAT
TGGATGGGGGAGCCAAAGCTCAAAGTGCAAATTCATCATAACAGTGGCTTCATTTTCCGGACACAAC
CTGAGATGGATTCTGACGTTTGCCTCCTGTTTGTGCATGTTTGTGAGATAGCGGAAGGCATCGTTTCAG
ACTCGCATCGGGCGTCCAGGCATCTCCACCTTTTCATGCCGGCTGTGATGGGATTTGTCGCCACAACAAC
GTCCATCGTCTATTATCATAACATTGAAACATCAAATTTCCCTAAATTACTTTTAGCTTTATTCTGTAC
TGGGTAATGGCCTTTATTACAAAGACGATAAAGTTGGTCAAATACTGGCAGTTGGGGTGGGGAGTGTGAG
ACCTGCGCTTCTGCATCACAGGAGTGTGGTCACTTGAATGGGCTGCTGATGGCTGTGGAGATCAATGT
CATCCGGGTCAGAAGATATGTTTCTTCATGAATCCCCAGAAAGTGAAGCCTCCGGAAGACCTCCAGGAC
CTGGGCGTGAGGTTCTCCAGCCATTTGTGAATTTACTGTCCAAAGCTACTTACTGGTGGATGAACACAC
TTATCATATCAGCTCACAGGAAACCTATCGATCTGAAGGCGATTGAAAGTTGCCGATAGCGATGAGGGC
GGTGACCAATTATGTCTGCCTAAAGGAAGCCTATGAAGAGCAGAAGAAAAGGCTGCCGATCATCCAAAT
CGGACTCCCTCCATATGGCTGGCCATGTACAGAGCTTTTGGGAGACCAATCCTGTGAGCAGCACATTCC
GGTACTTGGCTGACTTGTGGGTTTGGCTGGTCTCTTTGTATATCTGGGATAGTCCAGCGAGTAAATGA
AAAGACTAACACAACAAGAGAAATGTTTCCAGAGACACTCTCATCAAAGGAATTTCTGAAAAACGCCAT
GTGCTGGCTGTCTGCTTTTCTGGCCCTATCCTACAGAGGACCTTTCTGCAGGCTTCTACTATGTGA
CCATAGAGACCGGCATCAACCTCCGTGGGGCTCTGCTGGCTATGATATAAATAAATCCTTCGGCTCTC
GACTTCTAACCTATCCATGGGTGAGATGACCCTGGGACAGATCAACAACCTGGTTGCCATAGAAACCAAT
CAGCTCATGTGGTTCTTGTCTGTGTCCCAATCTGTGGGCCATGCCTGTTGAGATCATAATGGGGTGA
TCTGTCTACAATTTGCTTGGGTGAGTGCAGTGGTTGGCGCTGCAGTATTGTGCTCCTTGCACCGAT
TCAGTACTTCATTGCCACGAAGCTGGCGGAGGCTCAGAAGAGCACTCTGGATTATCCACCAGAGAGTTG
AAGAAGACGAATGAGATACTGAAGGGCATCAAACCTCTTAAGCTGTACGCTGGGAGCACATTTTCTGCA



[View online >](#)

AGAGCGTGGAGGAGACACGAATGAAGGAGCTCTCCAGCCTCAAAACCTTCGCGCTCTACACGTCACTTTC
CATCTTCATGAACGCAGCAATCCCATCGCAGCTGTTCTTGCGACATTTGTGACACATGCGTACGCCAGT
GGAAACAACCTGAAGCCTGCAGAGGCCCTTTCCTCTCTGTCTCTTCCACATCCTCGTCACACCCTCT
TCCTGTGTCCACGGTGGTCAGATTGCGAGTCAAAGCCATCATCAGTGTCAAAGCTGAATGAGTTTCT
CTTGAGCGATGAGATTGGTGAGGACAGCTGGAGGGCCGGGAGGGCAGCTGCCTTTCGAGTCTGTAAAG
AAGCACACCGGAGTGGTGACAAAATGGATACTTCTCATGGGCAAGTGGTTAGCTACATTGTCCAATTTG
ACATTCGAATTCACACAGGTACGTAACCATGATTGTAGGCCAAGTGGTTGTGGAAAATCATCTCTTCT
CCTTGCCATCCTTGGTGAGATGCAGACCCTGGAAGGAAAAGTTTACTGGAACAATGTAAATGAATCTGAG
CCTTCTTTTGAAGCAACCCGAAGCAGAAGCAGGTATTCTGTGGCTTACGCTGCCAGAAGCCTTGGCTCC
TAAATGCTACAGTTGAGGAAAATACACTTTTGGAAAGCTTTCAACAGACAGAGGTACAAGGCTGTAC
CGATGCCTGTCTCTTACGCCAGACATTGATTTGCTACCATTTGGAGACCAAAGTAAATCGGAGAGAGG
GGCATCAACCTGAGTGGGGTGCAGAGGCAGAGAATCTGCGTGGCAGGGCACTTACCAAAAACCAACA
TCGTCTTTTGGACGACCATTCTGCTCCATCCACCTGAGCGATCATTTGATGCAGGAAGGAAT
CCTGAAGTTTCTCAGGATGACAAGAGGACGGTTGTTCTGTGACGCACAACTGCAGTACCTGACGCAC
GCTGACTGGATCATAGCCATGAAGGATGGCAGTGTGTTAAGGGAAGGGACTTTGAAAGACATTGAGACCA
AAGACGTGGAGCTTTATGAACACTGGAACCCCTCATGAATAGACAGGATCAAGAATTAGAAAAGGACAT
GGAAGCAGACCAACAACACTGGAGAGGAAGACTCTCCGGAGAGCCATGTATTCAAGAGAGGCCAAGGCA
CAGATGGAGGATGAAGATGAAGAGGAGGAAGAGGGAAGATGAGGAAGATAACATGTCAACGGTGTGA
GGCTCAGGACCAAGATGCCCTGGAAGACCTGCTGGTGGTACCTCACTTACAGGAGGTTTTTTCTGCTCTT
CCTCATGATCTTCTCAAAGCTTTTGAAGCACTCGGTGATTGTGGCTATAGACTACTGGCTAGTACGTGG
ACATCCGAATACAGTATAAACCATCCTGGAAGAGCTGACCAGACCTTCTATGTGGCTGGGTTGAGCATCC
TCTGTGGAGCAGGCATTTTCTTTCCTCGTCACTCCCTCACCCTGGAATGGATGGGCTCACAGCCGC
CAAGAACCTCCACCACAACCTCCTCAATAAGATAAATCTCGGGCAATAAGGTTCTTTGATACCACACCG
CTGGGGCTGATCCTCAATCGGTTTTCTGCTGATACGAACATCATCGACCAGCATATCCCTCCGACCTTGG
AGTCGCTGACGCGCTCCACCCTGCTGCTGCTGCTATTGGGATGATCTCCTATGCTACACCCGTGTT
TCTCGTCGCCCTTGCGCCCTGGGTGTAGCCTTTTATTTATCCAGAAATACTTCCGGGTTGCCTTAAG
GATCTCCAGGAACCTGACGACAGCACCCAGCTCCCTGCTTTGTCACTTCTCAGAAACAGCTGAAGGGC
TCACCCTATCCGGGCTTACAGGATGAAACCAGATTCAAGCAACGCATGCTGGAGCTGACAGACACGAA
CAACATTGCTACTTATTTCTCAGCAGCCAACAGATGGCTGGAGGTGAGGACGACTATCTGGGAGCG
TGCATTGTTCTGACAGCCTCCATTGCATCCATTAGTGGCTTTCCTCAACTTGGACTGGTGGGCTTGGCC
TTCTCTATGCCCTCAGATAACCAATTACCTAAATTTGGGTTGTAAGGAACCTGGCCGACCTGGAAGTCCA
GATGGGTGAGTGAAGAAAGTGAACAGTTTCTTACTATGGAGTCCGAGAATATGAAGGACCATGGAT
CCTTCTCAAGTCCAGAGCACTGGCCACAGGAAGGCGAGATCAAGATTCACGATCTGTGTGCAGATATG
AAAATAACCTGAAGCCGTTCTGAAACATGTCAAGGCTTACATCAAACCCGGGCAGAAGGTGGGCATCTG
TGGTGAACCTGGCAGTGGGAAGTCTCCTTATCCCTGGCTTTCTCAGAAATGGTGCAGATATTTGACGGA
AAGATAGTCATTGATGGGATAGACATCTCAAACCTGCCCTTGCACACGCTCCGCTCCAGGCTGTCCATCA
TTCTCCAGGACCAATCCTGTTACAGCGCTCCATCAGGTTAACCTGGATCCTGAATGCAAGTGCACAGA
TGACAGGCTCTGGGAGGCTCTAGAAATGCCCAGCTGAAGAATATGGTCAAATCTCTGCCGGAGGCTTA
GATGCCACTGTCAACGAAGGTGGTGAGAACTTCACTGTTGGACAGAGACAGCTGTTCTGCCTGGCCAGGG
CCTTTGTTGGAAGAGCAGTATACTCATCATGGATGAAGCCACTGCTTCCATCGACATGGCCACGAAAA
CATTTTGCAGAAAGTAGTCATGACAGCCTTGGGATCGCACGGTCGTAACCATAGCTCACCGTGTCTCT
TCTATTGTGGATGCAGGCCTTGTTTAGTCTTTTCTGAGGGTATTTTAGTGGAGTGTGATACTGGTCCAA
ACCTGCTCCAGCACAGAATGGCCTTTTTCTACTTTGGTGTGATGACCAACAAG

ACGCGTACGCGGCCGCTCGAGCAGAACTCATCTCAGAAGAGGATCTGGCAGCAATGATATCCTGGATT
ACAAGGATGACGACGATAAGGTTTAA

Protein Sequence: >MR224350 representing NM_021042
 Red=Cloning site Green=Tags(s)

```

MSLSFCGNNISSYNIYYGVLQNPCFVDALNLVPHVFLFITFPILFIGWGSQSSKVQIHHNTWLHFPGH
LRWILTFALLFVHVCEIAEGIVSDSHRASRHLHLMFPAVMGFVATTTIVVYHNIETSNFPKLLALFLY
WYMAFITKTIKLVKYQLGWGVSDFRCITGVMVILNGLLMAVEINVIRVRYVFFMNPQKVKPPEDLQD
LGVRFLOPFVNLLSKATYWMNTLII SAHRKPIDLKAIGKLP IAMRAVTNYVCLKEAYEEQKKKAADHPN
RTPSIWLAMRYAFGRPILLSSTFRYLADLLGFAGPLCISGIVQRVNEKNTTREMFPETLSSKEFLENAH
VLAVLLFLALILQRTFLQASYVYTIETGINLRGALLAMIYNKILRLSTSNLSMGEMTLGQINNLVAIETN
QLMWFLFLCPNLWAMPVQIIMGVILLYNLLGSSALVGAIVVLLAPIQYFIATKLAEAQKSTLDYSTERL
KKTNEILKGIKLLKLYAWEHIFCKSVEETRMKELSSLKTFALYTSLSIFMNAIPIAAVLATFVTHAYAS
GNNLKPAEAFASLSL FHILVTPFLLLSTVVRFAVKAIISVQKLNELL SDEIGEDSWRAGEGLPFESCK
KHTGVVTNGYFSWGSGLATLSNIDIRIPTQLTMI VGVQVCGKSSLLAILGEMQTLGKVVYWNVNESE
PSFEATRSRSRYSVAYAAQKPWLLNATVEENITFGSPFNRQRYKAVTDACSLQPDIDLLPFGDQTEIGER
GINLSGGQRQRICVARALYQNTNIVFLDDPFSALDIHLSDHLMQEGILKFLQDDKRTVVLVTHKLQYLTH
ADWIIAMKDGSVLREGTLKDIQTKDVELYEHWKTLMNRQDQELKDEADQTTLERKTLRRAMYSREAKA
QMEDEDEEEEEDEEDNMSTMVRLRTKMPWKCWWYLSGGFFLLFLMIFSKLLKHSVIVAIDYWLATW
TSEYSINHPGKADQTFYVAGFSILCGAGIFLCLVTSLTVEWMGLTAAKNLHNNLLNKIILGPIRFFDTP
LGLILNRF SADTNIIDQHIPP TLES LRSTLLCLSAIGMISYATPVFLVALAPLGVAFYFIQKYFRVASK
DLQELDDSTQLPLLCHFSETAEGLTTRAFRHETRFKQRMLELTDNNIAYLFLSAANRWLEVRTDYLGA
CIVLTASIASISGSSNSGLVGLLLYAL TITNYLNWVVRNLADLEVQMGAVKVNVSFLTMESEN YEGTMD
PSQVPEHWPQEGEIKI HDLCVRYENNLKPV LKHVKAYIKPGQKVICGRTGSGKSSLSLAFFRMVDIFDG
KIVIDGIDISKLPLHLRSRLSILQDPILFSGSIRFNLDP ECKCTDDRLWEALEIAQLKNMVKSLPGGL
DATVTEGGENFSVGQRQLFLARAFVRKSSILIMDEATASIDMATENILQKV VMTAFADRTVVTIAHRVS
SIVDAGLVLVFSEGILVECDTGP NLLQHKNGLFSTLVMTNK
  
```

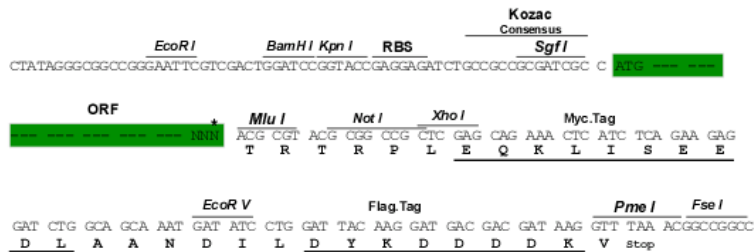
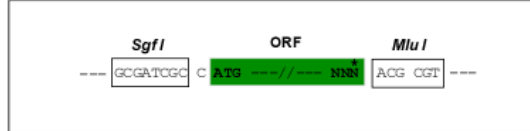
TRTRPLEQKLISEEDLAANDILDYKDDDDKV

Restriction Sites:

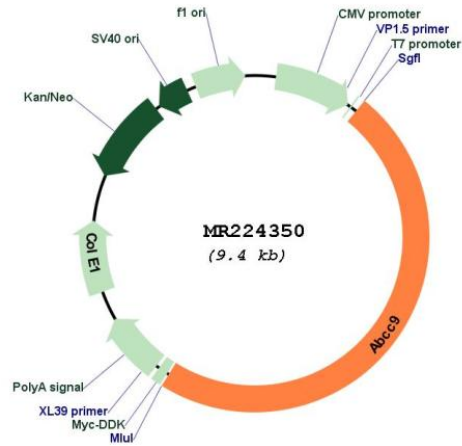
Sgfl-MluI

Cloning Scheme:

Cloning sites used for ORF Shuttling:



* The last codon before the Stop codon of the ORF

Plasmid Map:


ACCN: NM_021042

ORF Size: 4533 bp

OTI Disclaimer: The molecular sequence of this clone aligns with the gene accession number as a point of reference only. However, individual transcript sequences of the same gene can differ through naturally occurring variations (e.g. polymorphisms), each with its own valid existence. This clone is substantially in agreement with the reference, but a complete review of all prevailing variants is recommended prior to use. [More info](#)

OTI Annotation: This clone was engineered to express the complete ORF with an expression tag. Expression varies depending on the nature of the gene.

Components: The ORF clone is ion-exchange column purified and shipped in a 2D barcoded Matrix tube containing 10ug of transfection-ready, dried plasmid DNA (reconstitute with 100 ul of water).

Reconstitution Method:

1. Centrifuge at 5,000xg for 5min.
2. Carefully open the tube and add 100ul of sterile water to dissolve the DNA.
3. Close the tube and incubate for 10 minutes at room temperature.
4. Briefly vortex the tube and then do a quick spin (less than 5000xg) to concentrate the liquid at the bottom.
5. Store the suspended plasmid at -20°C. The DNA is stable for at least one year from date of shipping when stored at -20°C.

RefSeq: [NM_021042.2](#), [NP_066379.2](#)

RefSeq Size: 7433 bp

RefSeq ORF: 4536 bp

Locus ID: 20928

UniProt ID: [P70170](#)

Cytogenetics: 6 74.35 cM

MW: 170.5 kDa

Gene Summary: The membrane-associated protein encoded by this gene is a member of the superfamily of ATP-binding cassette (ABC) transporters. ABC proteins transport various molecules across extra- and intra-cellular membranes. ABC genes are divided into seven distinct subfamilies (ABC1, MDR/TAP, MRP, ALD, OABP, GCN20, White). This protein is a member of the MRP subfamily which is involved in multi-drug resistance. The human protein is thought to form ATP-sensitive potassium channels in cardiac, skeletal, and vascular and non-vascular smooth muscle. Protein structure suggests a role as the drug-binding channel-modulating subunit of the extrapancreatic ATP-sensitive potassium channels. Alternative splicing of this gene results in multiple transcript variants. [provided by RefSeq, Jul 2015]