

Product datasheet for **MR224341**

Mta3 (NM_054082) Mouse Tagged ORF Clone

Product data:

Product Type:	Expression Plasmids
Product Name:	Mta3 (NM_054082) Mouse Tagged ORF Clone
Tag:	Myc-DDK
Symbol:	Mta3
Synonyms:	1110002J22Rik; mKIAA1266
Vector:	pCMV6-Entry (PS100001)
E. coli Selection:	Kanamycin (25 ug/mL)
Cell Selection:	Neomycin



[View online »](#)

ORF Nucleotide Sequence:

>MR224341 representing NM_054082
 Red=Cloning site Blue=ORF Green=Tags(s)

TTTTGTAATACGACTCACTATAGGGCGGCCGGAATTCGTCGACTGGATCCGGTACCGAGGAGATCTGCC
 GCC**CGCATCGCC**

ATGGCGGCCAACATGTACCGGGTCGGAGACTACGTTTATTTTGAAGATTCCTCCAGCAACCCGTACCTCA
 TCAGACGGATAGAGGAGCTCAACAAGACTGCAAGTGGCAATGTGGAAGCAAAAGTCGTCTGCTTTTACAG
 AAGACGGGACATCTCAACACGCTTATCATGCTCGCCGACAAGCATGCTAAAGAACTGAGGAGGAGTCG
 GAGACGCCAGTTGAGGCCGACTTGACGGAGAAGCAGAAGCACCAGCTGAAACACAGGGAGCTCTTTCTGT
 CGCGCCAGTACGAGTCACTGCCTGCGACACATACAGGGGGAAGTGCAGCGTGGCCCTGTGAATGAGAC
 AGAATCCGTGTTGCATACCTTGACAAGGAGGATACCTTCTTCTACTCACTGGTATACGACCCTTCAGTG
 AAAACATTATTGGCTGACAAAGGTGAAATCAGAGTGGGCCAAAGTACCAAGCTGACATTCCAGACATGC
 TACCAGAAGACTCAGATGAGAGGGAACAATCAAATTGGAAGTTAAGTTTGGGACCCCAATAGCCCACT
 TACGGATCGACAGATTGACCAGTTTTTAGTTGTAGCCCGTCCCGTGGGAACATTTGCCCGAGCCCTGGAC
 TGCAGCAGCTCCGTGAGGCAACCCAGCCTTCACATGAGTGCAGCCGACGCTCCCGAGACATCACCTTGT
 TTCATGCCATGGACACACTGTACAGGCACGGCTATGACCTCAGCAGCGCCATCAGTGTGCTGGTGCCGT
 CGGAGGGCCAGTCTCTGCAGGGACGAGATGGAGGAGTGGTGGCCTCTGAAGCCTGCCTATTCCAAGAA
 GCACTGGAAAAATACGGCAAAGATTTCAACGACATTCGTCAGGACTTTCTCCCGTGGAAATCCTTGACTA
 GCATCATTGAATATTATTACATGTGAAAACTACTGACAGATACGTGCAGCAGAAGCGCCTAAAGGCCGC
 AGAAGCCGAGAGCAAACCTGAAACAAGTGTACATCCCGACTTACAAACCAATCCCAACCAATCTCCAGC
 AGCAACGGCAAGGCTGGCACTGTGAATGGAGCTGTGGGACCCAGTTTCAGCCCCAGAGCGCCCTCCTAG
 GGCGAGCCTGCGAGAGCTGCTACGCCACACAGTCTCATCAGTGGTATTCTTGGGGCCACATCAACATGCA
 GTGTAGACTCTGCGGACCTGTTGGCTGTATTGAAAAAGTATGGAGGTCTGAAAAATGCCTACCCAGTCA
 GACGAAGAGAAGTCTCCAGCCGACTGCAGAGGACCCGCGCGCAAGAAGCCACATGTCCCGCAGGCGCT
 TGCAGGGCATGCCGCTCCGGAACACCGGAAGCCCAAGTCTGCAGTGAAGACCCGCCAAGCTTTCTTCTCT
 TCGTACTACGTATTTACAAAAATTGCTCGTCAGGTCTGCAAAAGCACCTGCGGCTGCGGCAGGCAGCG
 AGACGGCCGTTTGTGCTATTAATTATGCTGCCATTAGGGCAGAATATGCAGACAGACATGCCGAACCTT
 CTGGAAGCCCACTGAAAAGCAGAAGCACCAGGAAACCTTTGTCTGTATCATTGGGTATTAGAGATCCA
 TCCCGCAAAGAACTAATGTAATTCGGTCTCCACCAAGCCTGCAAACCTCAGCTACCAAGAGGATGCTC
 GCCGCTCCGAATCACACATCTCTGAGCATTCTGGGAAAAAGAACTACAGCCATACAATGGTCTAGATG
 GCCCAGAACGATGGCTAAGCAGG

ACGCGTACGCGGCCGCTCGAGCAGAAACTCATCTCAGAAGAGGATCTGGCAGCAAATGATATCCTGGATT
 ACAAGGATGACGACGATAAGGTTTAA

Protein Sequence:

>MR224341 representing NM_054082
 Red=Cloning site Green=Tags(s)

MAANMYRVGDYVYFENSSNPYLIRRIEELNKTASGNVEAKVVCFYRRRDISNTLIMLADKHAKETEES
 ETPVEADLTEKQKHLKHLRELFSLRQYESLPATHIRGKCSVALLNETESVLSYLDKEDTFFYSLVYDPSV
 KTL LADKGEIRVGPKYQADIPDMLPEDSDEREQSKLEVKVWDPNSPLTDRQIDQFLVVARAVGTFARALD
 CSSSVRQPSLHMSAAAASRDITLFHAMDTLYRHGYDLSSAISVLVPLGGPVLCRDEMEEWSASEACL FEE
 ALEKYGKDFNDIRQDFLPWKSLTSIIIEYYMWKTTDRYVQKRLKAAEAESKLKQVYIPTYKPNPNQISS
 SNGKAGTVNGAVGTQFPQSALLGRACESCYATQSHQWYSWPPNMQCRLCATCWLYWKKYGLKMPTQS
 DEEKSPSPTAEDPRARSHMSRQALQGMVVRNTGSPKSAVKTRQAFRLRTTYFTKIARQVCKSTLRLRQAA
 RRPFVAINYAAIRAEYADRHAELSGSPLKSRSTRKPLSCIIGYLEIHPAKKPNVIRSPSLQTPATKRML
 AAPNHTSLSILGKRNYSHHGLDGPWLSR

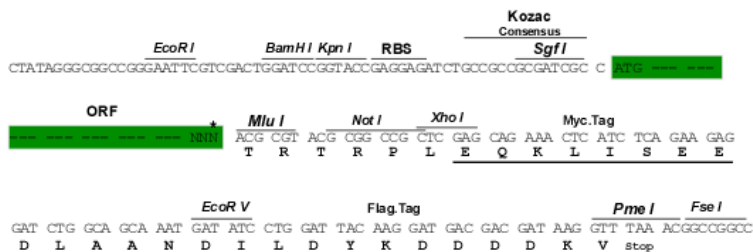
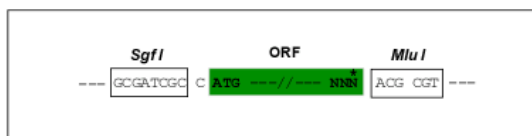
TRTRPLEQKLISEEDLAANDILDYKDDDDKV

Restriction Sites:

SgfI-MluI

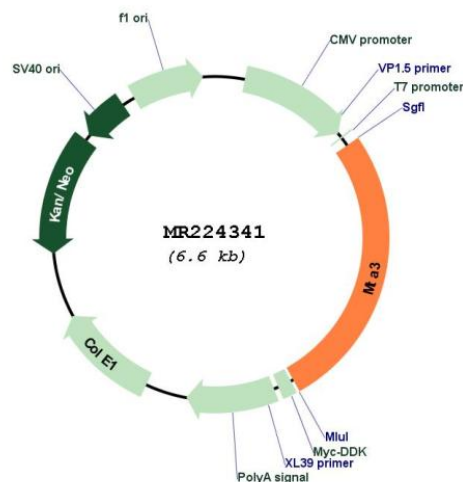
Cloning Scheme:

Cloning sites used for ORF Shutting:



* The last codon before the Stop codon of the ORF

Plasmid Map:



ACCN: NM_054082

ORF Size: 1773 bp

OTI Disclaimer:	The molecular sequence of this clone aligns with the gene accession number as a point of reference only. However, individual transcript sequences of the same gene can differ through naturally occurring variations (e.g. polymorphisms), each with its own valid existence. This clone is substantially in agreement with the reference, but a complete review of all prevailing variants is recommended prior to use. More info
OTI Annotation:	This clone was engineered to express the complete ORF with an expression tag. Expression varies depending on the nature of the gene.
Components:	The ORF clone is ion-exchange column purified and shipped in a 2D barcoded Matrix tube containing 10ug of transfection-ready, dried plasmid DNA (reconstitute with 100 ul of water).
Reconstitution Method:	<ol style="list-style-type: none">1. Centrifuge at 5,000xg for 5min.2. Carefully open the tube and add 100ul of sterile water to dissolve the DNA.3. Close the tube and incubate for 10 minutes at room temperature.4. Briefly vortex the tube and then do a quick spin (less than 5000xg) to concentrate the liquid at the bottom.5. Store the suspended plasmid at -20°C. The DNA is stable for at least one year from date of shipping when stored at -20°C.
RefSeq:	NM_054082.2 , NP_473423.1
RefSeq Size:	2115 bp
RefSeq ORF:	1776 bp
Locus ID:	116871
UniProt ID:	Q924K8
Cytogenetics:	17 E4
MW:	67.5 kDa
Gene Summary:	Plays a role in maintenance of the normal epithelial architecture through the repression of SNAI1 transcription in a histone deacetylase-dependent manner, and thus the regulation of E-cadherin levels. Contributes to transcriptional repression by BCL6 (By similarity). [UniProtKB/Swiss-Prot Function]