

## Product datasheet for **MR224301**

### Unc5b (NM\_029770) Mouse Tagged ORF Clone

#### Product data:

Product Type:	Expression Plasmids
Product Name:	Unc5b (NM_029770) Mouse Tagged ORF Clone
Tag:	Myc-DDK
Symbol:	Unc5b
Synonyms:	6330415E02Rik; A630020F16; D10Bwg0792e; Unc5h2
Mammalian Cell Selection:	Neomycin
Vector:	pCMV6-Entry (PS100001)
E. coli Selection:	Kanamycin (25 ug/mL)



[View online »](#)

ORF Nucleotide  
Sequence:

>MR224301 representing NM\_029770  
 Red=Cloning site Blue=ORF Green=Tags(s)

TTTTGTAATACGACTCACTATAGGGCGGCCGGGAATTCGTCGACTGGATCCGGTACCGAGGAGATCTGCC  
 GCCCGCATCGCC

ATGAGGGCCCGAGCGGGGTGCGGAGCGGCTGCTGCTGGCGCTGCTGCTTTGCTGGGATCCGACACCGA  
 GCCTAGCAGGCGTTGACTCTGCTGGCCAGGTGCTCCAGACTCCTACCCATCAGCCCTGCGGAGCAGCT  
 GCCGTAATCCTATTGGAGCCACAGGACGCTACATCGTAAAGAACAAGCCAGTGGAACTGCACTGCAGA  
 GCCTTCCCTGCCACGCAGATCTACTTCAAGTGAATGGCGAGTGGGTGAGCCAGAATGACCACGTACAC  
 AGGAGAGCCTGGATGAGGCCACAGGCTTGGGGTGCAGAGGTGCAGATCGAGGTGTACGGCAGCAAGT  
 GGAGGAACTCTTCGGGCTCGAGGACTACTGGTCCAGTGCCTGGGCTGAGCTCTTCGGGAACTACCAAG  
 AGTCGCCGAGCCTACATCCGATTGCCTACTTGCAGCAAGAATTTGACCAGGAGCCTCTGGCCAAGGAGG  
 TACCCTTGGATCATGAGGTCTTCTGCAGTGCCGCCACCGGAGGGAGTGCCTGTGGCTGAGGTGGAATG  
 GCTCAAGAATGAAGATGTCATTGACCCGCTCAGGACACTAATCTCTGCTCACCATTGACCACAACCTC  
 ATCATCCGCCAGGCGCGCTCTCAGACACGGCCAACTACACCTGTGTGGCCAAGAATATCGTGGCCAAGC  
 GCCGGAGCACCACGGCCACAGTCATCGTCTATGTGAATGGAGGCTGGTCCAGCTGGGCAGAGTGGTACC  
 CTGTTCCAATCGCTGTGGCCGAGGCTGGCAGAAGCGTACTCGGACCTGCACCAATCCAGCCCACTCAAT  
 GGAGGGCGCTTCTGTGAGGGACAGGCTTCCAGAAGACAGCTTGCACCACCGTGTGCCAGTGGATGGAG  
 CGTGGACCGAGTGGAGCAAGTGGTCTGCCTGCAGCACAGAGTGTGCGCACTGGCGCAGCCGCGAGTGCAT  
 GGCACCCGCCACCCAGAACGGAGGCCGTGACTGCAGCGGGACGCTACTTGACTCCAAGAAGTGCAGTGT  
 GGGCTGTGCGTGTGAATCAGAGAAGTCTAAACGACCTAAAAGCCACCCCTGGAGACATCGGGAGATG  
 TGGCACTGTACGACGGCCTTGTGGTGGCGCTTTGTGGTGGTAGCGGTTCTCATGGCCGTGGGAGTGT  
 CGTATACCGGAGAACTGCCGGACTTCGACACGGACATCACCGACTCCTCTGCGGCCCTCACTGGTGGC  
 TTCACCCCTGTCAACTTCAAGACTGCAAGGCCAACAAACCCGAGCTCCTGCACCCGTCGCCCCCTCCAG  
 ACCTAACGGCCAGTGTGGCATCTACCGCGGCCTGTGTATGCCCTGCAGGACTCCGCCGACAAGATCCC  
 CATGACTAATTCGCCCTGCTGGATCCCCTGCCAGCCTCAAGATCAAGGTCTATAACTCCAGCACCATC  
 GGTTCGGGTCTGGCCTGGCTGATGGAGCCGACCTGCTGGGTGTCTCCCGCGGGCACGTACCCAGGGC  
 ATTTCTCCCGGGACACCCATTTCTGCACCTGCGCAGTGCACGCTTGGTCCCAGCACCTCTGGGCT  
 ACCTCGGGACCCAGCAGCAGTGTACGCGCACCTTTGGTTGCCGGAGGAAGGCTGAGCTCCCCGGC  
 ACAGGGGTGAGCCTGTTGGTACCAAATGGAGCCATTTCCAGGGCAAGTCTATGACCTGTATCTACATA  
 TCAACAAGGCCGAAAGCACCCCTCCCACTTTCAGAAGGTTCCAGACAGTATTGAGCCCTCGGTGACCTG  
 TGGGCCACAGGCTACTCCTGTGCCGCTGTGCTCCTCACCGTGCACCACTGTGCTGAAGTATCGCT  
 GGAGACTGGATCTTTAGCTCAAGACCCAGGCCATCAGGGCCACTGGGAGGAGTGGTACCTTGGATG  
 AGGAGACCCTCAACACACCCTGCTACTGCCAGCTGGAGGCTAAGTCTGCCACATCCTGTGGACCAGCT  
 GGGTACCTACGTATTATGGGCGAGTCTACTCTCGCTCTGCAGTCAAGCGGCTCCAGCTGGCCATCTTC  
 GCCCAGCCCTCTGCACCTCCCTGGAGTATAGCCTCAGGTCTACTGTCTGGAGGACACACCTGTAGCAC  
 TGAAGGAGTCTGGAGCTGGAGGACTCTGGGTGGCTACTTGGTGGAGGAGCCCAAGCCTTTGCTCTT  
 TAAGGACAGTTACCACAACCTACGCTCTCCCTCCATGACATCCCCATGCCACTGGAGGAGCAAATA  
 CTGGCCAAGTACCAGGAGATTCCTTCTACCAGTCTGGAATGGCAGCCAGAGAGCCCTGCACTGCACTT  
 TCAACCCTGGAGAGGCATAGCCTGGCCTCCACGGAGTTCACCTGTAAGGTCTGCGTGCAGGAGTCAAGG  
 GGAAGGCCAGATTTTCCAGCTGCACACAACGTTGGCCGAGACGCTGCTGGCTCCCTGGATGCTCTCTGC  
 TCTGCCCGGGCAATGCCATCACACCCAGCTGGGACCTATGCCTTCAAGATACCCCTGTCCATCCGCC  
 AAAAGATCTGCAGCAGCCTGGACCCCCAACTCCCGGGCAACGACTGGAGGCTGTTGGCGCAGAAGCT  
 GTCCATGGACCGTACCTAACTACTTCGCCACCAAAGCTAGTCCACAGGTGTATCTTAGACCTCTGG  
 GAAGCTCGGCAACAGGATGACGGGACCTCAACAGCCTGGCCAGTGCCTTGGAGGAGATGGCAAGAGTG  
 AGATGCTGGTAGCCATGGCCACAGATGGCGATTGC

ACGCGTACGCGGCCGCTCGAGCAGAACTCATCTCAGAAGAGGATCTGGCAGCAAATGATATCCTGGATT  
 ACAAGGATGACGACGATAAGGTTTAA

**Protein Sequence:** >MR224301 representing NM\_029770  
 Red=Cloning site Green=Tags(s)

```
MRARSGVRSALLLALLLCWDPTPSLAGVDSAGQVLPDSYSPAPAEQLPYFLLPQDAYIVKNKPVELHCR
AFPATQIYFKCNGEWVSQNDHVTQESLDEATGLRVREVQIEVSRQQVEELFGLLEDYWCQCVAWSSSGTTK
SRRAYIRIAYLRKNFDQEPLAKEVPLDHEVLLQCRPPEGVPAEVEWLKNEDVIDPAQDTNFLTIDHNL
IIRQARLSDTANYTCVAKNIVAKRRSTTATVIVYVYVNGGWSSWAEWSPCSNRCGRGWQKRTRTCTNPAPLN
GGAFCEGQAFQKTACTTVCPVDGAWTEWSKWSACSTECAHWSRECMAPPQNGGRDCSGTLLDSKNCTD
GLCVLNQRRLNDPKSHPLETSGDVVALYAGLVVAVFVVAVLMAVGIVYRRNCRDFDITDSSAALTGG
FHPVNFKTARPNNPQLLHPSAPPDLTASAGIYRGPVYALQDSADKIPMTNSPLLDPLPSLKIKVYNSSTI
GSGSGLADGADLLGVLPPTYPGDFSRDTHFLHLRSASLGSQHLLGLPRDPSSSVSGTFGCLGGRLSLPG
TGVSLLPNGAIPQGKFYDLYLHINKAESTLPLSEGSQTVLSPSVTCGPTGLLLCRPVVLTVPHCAEVIA
GDWIFQLKTAHQGHWEVVTLDEETLNTPCYCQLEAKSCHILLDQLGTYVFMGESYSRSYAVKRLQLAIF
APALCTSLEYSRKYCLEDPVALKEVLELERTLGGYLVEEPKPLLKDSYHNLRLSLHDIPHAHWRSKL
LAKYQEIFPHYVWNGSQRALHCTFTLERHSLASTEFTCKVCVRQVEGEGQIFQLHTTLAETPAGSLDALC
SAPGNAITTLQGPYAFKIPLSIRQKICSSLDAPNSRGNWRLLAQKLSMDRYLNYFATKASPTGVILDLW
EARQQDDGDLNSLASALEEMGKSEMLVAMATDGDC
```

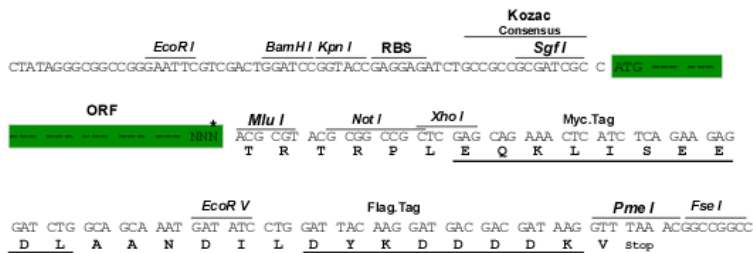
TRTRPLEQKLISEEDLAANDILDYKDDDDKV

**Chromatograms:** [https://cdn.origene.com/chromatograms/mm9002\\_h07.zip](https://cdn.origene.com/chromatograms/mm9002_h07.zip)

**Restriction Sites:** SgfI-MluI

**Cloning Scheme:**

Cloning sites used for ORF Shuttling:



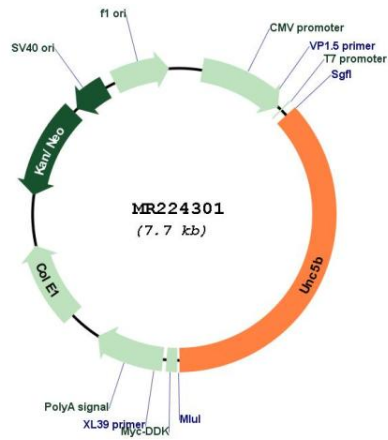
\* The last codon before the Stop codon of the ORF

**ACCN:** NM\_029770

**ORF Size:** 2835 bp

<b>OTI Disclaimer:</b>	The molecular sequence of this clone aligns with the gene accession number as a point of reference only. However, individual transcript sequences of the same gene can differ through naturally occurring variations (e.g. polymorphisms), each with its own valid existence. This clone is substantially in agreement with the reference, but a complete review of all prevailing variants is recommended prior to use. <a href="#">More info</a>
<b>OTI Annotation:</b>	This clone was engineered to express the complete ORF with an expression tag. Expression varies depending on the nature of the gene.
<b>Components:</b>	The ORF clone is ion-exchange column purified and shipped in a 2D barcoded Matrix tube containing 10ug of transfection-ready, dried plasmid DNA (reconstitute with 100 ul of water).
<b>Reconstitution Method:</b>	<ol style="list-style-type: none"><li>1. Centrifuge at 5,000xg for 5min.</li><li>2. Carefully open the tube and add 100ul of sterile water to dissolve the DNA.</li><li>3. Close the tube and incubate for 10 minutes at room temperature.</li><li>4. Briefly vortex the tube and then do a quick spin (less than 5000xg) to concentrate the liquid at the bottom.</li><li>5. Store the suspended plasmid at -20°C. The DNA is stable for at least one year from date of shipping when stored at -20°C.</li></ol>
<b>RefSeq:</b>	<a href="#">NM_029770.3</a>
<b>RefSeq Size:</b>	5867 bp
<b>RefSeq ORF:</b>	2838 bp
<b>Locus ID:</b>	107449
<b>UniProt ID:</b>	<a href="#">Q8K1S3</a>
<b>Cytogenetics:</b>	10 31.52 cM
<b>MW:</b>	104.2 kDa
<b>Gene Summary:</b>	Receptor for netrin required for axon guidance. Mediates axon repulsion of neuronal growth cones in the developing nervous system upon ligand binding. Axon repulsion in growth cones may be caused by its association with DCC that may trigger signaling for repulsion (By similarity). Functions as netrin receptor that negatively regulates vascular branching during angiogenesis (PubMed:15510105). Mediates retraction of tip cell filopodia on endothelial growth cones in response to netrin (PubMed:15510105). It also acts as a dependence receptor required for apoptosis induction when not associated with netrin ligand. Mediates apoptosis by activating DAPK1. In the absence of NTN1, activates DAPK1 by reducing its autoinhibitory phosphorylation at Ser-308 thereby increasing its catalytic activity (By similarity).[UniProtKB/Swiss-Prot Function]

Product images:



Circular map for MR224301