

## Product datasheet for MR224297

### Klf13 (NM\_021366) Mouse Tagged ORF Clone

#### Product data:

Product Type:	Expression Plasmids
Product Name:	Klf13 (NM_021366) Mouse Tagged ORF Clone
Tag:	Myc-DDK
Symbol:	Klf13
Synonyms:	0610043C13Rik; 9430029L20Rik; Bteb3; FKLF-2; FKLF2; NSLP1; RFLAT-1; RFLAT1
Mammalian Cell Selection:	Neomycin
Vector:	pCMV6-Entry (PS100001)
E. coli Selection:	Kanamycin (25 ug/mL)
ORF Nucleotide Sequence:	>MR224297 representing NM_021366 Red=Cloning site Blue=ORF Green=Tags(s)

TTTTGTAATACGACTCACTATAGGGCGCCGGGAATTCGTCGACTGGATCCGGTACCGAGGAGATCTGCC  
GCC**CGATCGCC**

ATGGCAGCCGCCCTATGTGGACCACTTTGCCGCCGAGTGCCTCGTGTCCATGTCCAGCCGCGCAGTCCG  
TGCACGAGCCGCGGAAGGACCTGAACCCCGCCCGAGGGCGCGGCCGCCGCCACACTGCCCG  
CGTTGACGAGCCGCGACGGCAAGGACAGCGCCTCGCTTTTCGTGGTGGCTCGGATCCTAGCGGACCTC  
AACCAGCAGGCGCCGGCCCGCCCGCCCGGGAACGCAGAGAAGGGGCCGTGCGCGCAAGGCGAGGACCC  
CCTGCCGCTGCGCCTGCGCCCTGCGCCGCCACCCGGCCAGAGCCCGCCTCCCGGACAAGCAGG  
CGCGCCGCGCCGCCCGCCAGCCCGCGTGGAGCGAGCCGGAGGCGGATTTGGAGCAGGAGCCCGCCCC  
GCGGGGAGCGGCGAGCCTGGCCTCAGACAAGGGGTGCGCGAGGCGGAGCCGCGCGGACCTCGAGTCCC  
CGCAGAGGAAGCACAAGTGCCACTACGCGGGTGCAGAGAAAGTTACGGGAAATCTTCGCACCTCAAGGC  
GCACCTGAGAAGTACACAGGTGAGAGGCTTTTCGCTGCAGCTGGCAGGAGTGAACAAGAAGTTTCGCA  
CGCTCGGACGAGCTGGCACGGCACTATCGCACGCACACGGGCGAGAAGAAGTTTCAGCTGCCCATCTGTG  
AGAAGCGTTCATGCGGAGCGACCACCTGACGAAGCACGCACGCCACGCCAAGTTCCACCCAGGCAT  
GCTGCAGCGGCGCGGGGGCTCGAGGACCGGCTCGCTCAGCGACTACAGCCGCTCCGATGCCAGCAGC  
CCACCATCAGCCCGCCAGCTACCC

**ACGCGT**ACGCGGCCGCTCGAGCAGAAACTCATCTCAGAAGAGGATCTGGCAGCAAATGATATCCTGGATT  
ACAAGGATGACGACGATAAGGTTTAA



[View online »](#)

**Protein Sequence:** >MR224297 representing NM\_021366  
Red=Cloning site Green=Tags(s)

MAAAAYVDHFAECLVSMSSRAVVHEPREGPEPRPEGAAAAAPTLPVDERRDGKDSASLFVVARILADL  
 NQQAPAPAPAEERREGAAARKARTPCRLPPAPPAPPPGPEPASPGQAGAPAAPPSPAWSEPEAALEQEPGP  
 AGSGEPLRQRGRRSRADLESPQRKHKCHYAGCEKVYGKSSHLKAHLRTHHTGERPFACSWQECNKKFA  
 RSDALARHYRTHTGEKKFSCIICEKRFMRSDHLTKHARRHANFHPGMLQRRGGGSRTGSLSDYSRSDASS  
 PTISPASSP

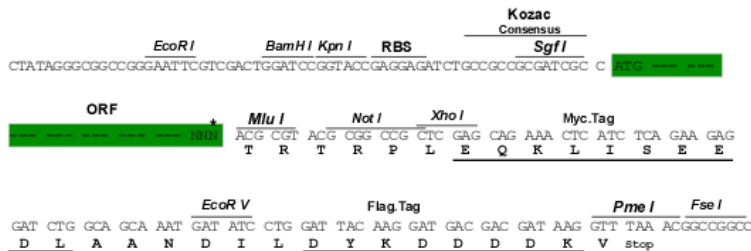
TRTRPLEQKLISEEDLAANDILDYKDDDDKV

**Chromatograms:** [https://cdn.origene.com/chromatograms/ja1590\\_d12.zip](https://cdn.origene.com/chromatograms/ja1590_d12.zip)

**Restriction Sites:** SgfI-MluI

**Cloning Scheme:**

Cloning sites used for ORF Shutting:



\* The last codon before the Stop codon of the ORF

**ACCN:** NM\_021366

**ORF Size:** 867 bp

**OTI Disclaimer:** The molecular sequence of this clone aligns with the gene accession number as a point of reference only. However, individual transcript sequences of the same gene can differ through naturally occurring variations (e.g. polymorphisms), each with its own valid existence. This clone is substantially in agreement with the reference, but a complete review of all prevailing variants is recommended prior to use. [More info](#)

**OTI Annotation:** This clone was engineered to express the complete ORF with an expression tag. Expression varies depending on the nature of the gene.

**Components:** The ORF clone is ion-exchange column purified and shipped in a 2D barcoded Matrix tube containing 10ug of transfection-ready, dried plasmid DNA (reconstitute with 100 ul of water).

**Reconstitution Method:**

1. Centrifuge at 5,000xg for 5min.
2. Carefully open the tube and add 100ul of sterile water to dissolve the DNA.
3. Close the tube and incubate for 10 minutes at room temperature.
4. Briefly vortex the tube and then do a quick spin (less than 5000xg) to concentrate the liquid at the bottom.
5. Store the suspended plasmid at -20°C. The DNA is stable for at least one year from date of shipping when stored at -20°C.

**RefSeq:** [NM\\_021366.3](#), [NP\\_067341.2](#)

**RefSeq Size:** 6396 bp

**RefSeq ORF:** 870 bp

**Locus ID:** 50794

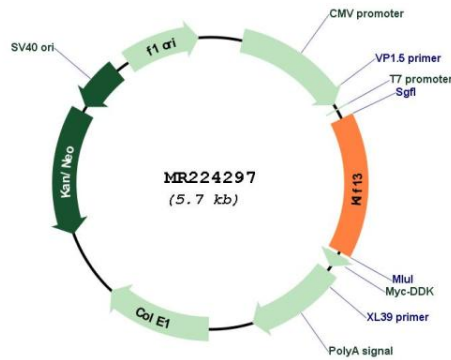
**UniProt ID:** [Q9JJZ6](#)

**Cytogenetics:** 7 C

**MW:** 31.6 kDa

**Gene Summary:** Transcription factor that activates expression from GC-rich minimal promoter regions, including genes in the cells of the erythroid lineage.[UniProtKB/Swiss-Prot Function]

**Product images:**



Circular map for MR224297