

Product datasheet for **MR224296**

Hif3a (NM_001162950) Mouse Tagged ORF Clone

Product data:

Product Type:	Expression Plasmids
Product Name:	Hif3a (NM_001162950) Mouse Tagged ORF Clone
Tag:	Myc-DDK
Symbol:	Hif3a
Synonyms:	bHLHe17; lpas; MOP7; NEPAS
Mammalian Cell Selection:	Neomycin
Vector:	pCMV6-Entry (PS100001)
E. coli Selection:	Kanamycin (25 ug/mL)



[View online »](#)

ORF Nucleotide Sequence:

>MR224296 representing NM_001162950
 Red=Cloning site Blue=ORF Green=Tags(s)

GACGTTGTATACGACTCCTATAGGGCGGCCGGGAATTCGTCGACTGGATCCGGTACCGAGGAGATCTGCC
 GCCGGCGCGCC

ATGGCGTTGGGGCTGCAGCGCTGAGGTGCAACACCGAGCTGCGGAAGGAGAAGTCGCGGGACGCGGCC
 GCAGCCGGCGCAGCCAGGAGACGGAGGTGCTGTACCAGCTGGCGCACACTCTGCCCTTTCGCGCGCGCGT
 CAGCGCGCACCTGGACAAGGCCTCCATCATGCGCCTCACAATCAGCTACCTGCGCATGCACCGCCTCTGC
 GCAGCAGGGGAGTGAACCAGGTGAAAAAGGGGAGAGCCACTGGACGCCTGCTACCTGAAGGCCCTGG
 AGGGTTTCGTCATGGTACTACCGCCGAGGGAGACATGGCTTACCTGTGCGAAAAATGTCAGCAAGCACCT
 GGGCCTCAGTCAGCTGGAGCTCATTGGACACAGTATCTTTGATTTTATCCATCCCTGTGACCAAGAGGAA
 CTTCAAGACGCCCTGACCCCGAGCCGAACTGTCAAAGAAGAAGCTGGAAGCCCCAACAGAGCGCCACT
 TTTCCCTGCGAATGAAGAGCACGCTCACCAGCAGAGGGCGCACGCTCAACCTCAAAGCGCCACCTGGAA
 GGTGCTGCACTGCTCAGGACATATGAGGGCCTACAAGCCCCTGCACAGACTTCCCTGCCGGGAGCCCT
 CGCTCCGAGCCTCCCCTGCAATGCCTGGTGCTTATCTGTGAAGCCATCCCCACCCAGCCAGTCTGGAGC
 CCCCCTGGGCGGAGGGCCTTCTCAGTCGCCACAGCCTGGACATGAAGTTCACATACTGCGACGAGAG
 GATTGCAGAAGTTGCTGGCTACAGTCTGATGACCTGATTGGCTGTTCTGCCTATGAATACATCCACGCT
 TTGGACTCTGATGCGGTGAGCAGGAGCATCCACACTTTGTTGAGCAAGGGCCAGGAGTAAACGGGGCAGT
 ATCGCTTCTGGCCCGGACTGGAGGCTATCTGTGGACTCAGACTCAGGCTACAGTGGTGTGAGGGGGGCG
 GGGCCCCCAGTCGAAAGTATCATCTGCGTCCACTTCTGATCAGCCGTGTAGAAGAGACCGGAGTGGT
 CTGTCTCTGGAACAAACGGAGCAACATACTCGCAGACCCCTCGGCTGAGTGCCTCCTCGCAGAAGGGTA
 TCCCTGGCAACAGTGTAGACTCTCCTGCTCCGCGGATCCTGGCCTTCTGCACCCCTCCGGCCCTGAGTGA
 GGCTCCCTGGCTGCTGACCCTCGCCGTTTCTGTAGTCCAGACCTGCGCCGCTCATGGCACCCATCCTG
 GATGGACCTCCCCAGCTGCCACGCCAGCACCCACAAGCTACACGGAGACCCCAAAGTCTTCCGG
 CTGATCTCCAGATAAGTTGACAGTGGGCTTGGAAAAATGCGCACAGACTCTCCACTGCCAGAAAAACAA
 GACCGTGGAGACAGATCTAGATATAGCTCAGGACCCTGACACTCTGGACTTGGAGATGCTGGCCCTAC
 ATCTCCATGGATGATGACTTCCAGCTCACTCCAGCGAGCAATTGCCAAAGTCCACCGCAGACCTCCCA
 GGGTGGCCCGCAGGCCCGTCTCGGAGCTTCCATGGCCTGTGCGCTCCTATCCCTGAGCCCTCCCTACT
 ACCCCGCTGGGGAGTGATCCACGACTGAACTGTTCCAGTCTTCCAGGGGCGATCGCCCCACAGCCTCC
 CTGATGCCTGGAACCGAAGAGGGCCTTGGCCCAGAGCTCAGAGGACAAAGGGTTGGAGCTGCTGGAAA
 CTAAGCCGCCAAGCGGTCCCAAGACTAGAACCTGGAAGCTTCTGCTGCCTCCGCTCAGCCTGAGTTT
 CCTTCTGCAAGGTCGACAACTCCCGGGGAACCAGCAGGATCCCAGAGCCCCCTCGTGCATTCTCATGAG
 CCCTTGGGCTAGCTCCCTCGTGCTCTCTCTGCCAGCATGAGGAACTGTCCAGCCAGGAACCGCT
 TCCCGCCAGCAGCAGGCTTGGCCAGACCCAC

ACGCGTACGCGGCCGCTCGAGCAGAACTCATCTCAGAAGAGGATCTGGCAGCAATGATATCCTGGATT
 ACAAGGATGACGACGATAAGGTTTAA

Protein Sequence: >MR224296 representing NM_001162950
Red=Cloning site Green=Tags(s)

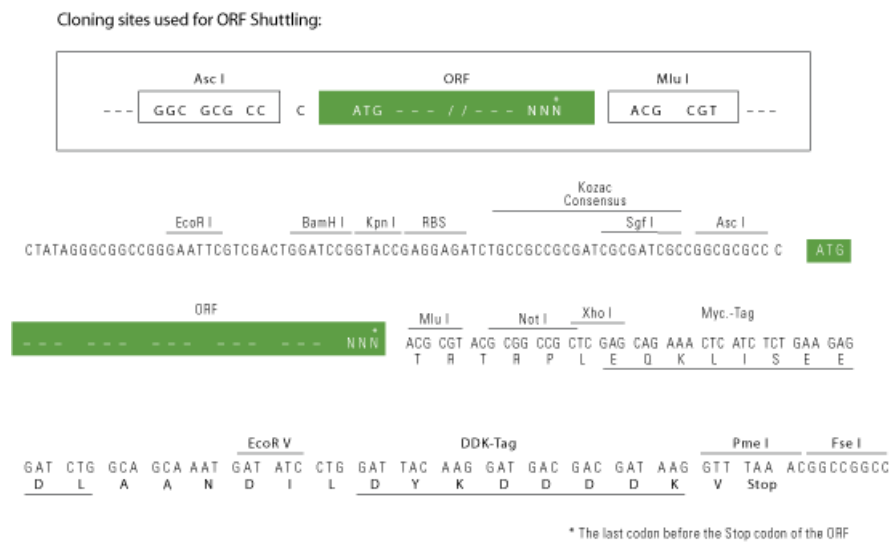
MALGLQVRVNTEL RKEKSRDAARSRRSQETEVLYQLAHTLPFARGVSAHLDKASIMRLTISYLRMHRLC
 AAGEWNQVEKGGPELDACYLKALEGFVMTAEGDMAYLSENVSKHLGLSQLELIGHSIFDFIHPCDQEE
 LQDALTPRPNLSKKKLEAPTERHFSLRMKSTLTSRGRTLNLKAATWKVLHCSGHMRAYKPPAQTSPAGSP
 RSEPLLQCLVLICEAIPHPASLEPPLGRGAFLSRHSLDMKFTYCDERIAEVAGYSPDDLIGCSAYEYIHA
 LDDAVSRSIHTLLSKGQAVTGQYRFLARTGGYLWTQTQATVVSGRGPQSESIICVHFLISRVEETGVV
 LSLEQTEQHTRRPPRLSASSQKIGPNSVDSPAPRILAFHLPPALSEASLAADPRRFCSPDLRRLMAPIL
 DGPPPAATPSTPQATRRPQSPLPADLPDKLTVGLENAHRLSTAQKNKTVETDLIAQDPDTLDLEMLAPY
 ISMDDDFQLNSSEQLPKVHRRPPRVARRPRARSFHGLSPPIPEPSLLPRWGS DPRLNCSSPSRGDRPTAS
 LMPGTRKRALAQSSSEDKLELLETKPPKRSRPLEPGSFLLPPLSLSFLQLQGRQLPGNQDPRAPLVHSHE
 PLGLAPSLLSLCQHEETVQPRNRFPPAAGLGQTH

TRTRPLEQKLISEEDLAANDILDYKDDDDKV

Chromatograms: https://cdn.origene.com/chromatograms/ja1542_e09.zip

Restriction Sites: AscI-MluI

Cloning Scheme:



ACCN: NM_001162950

ORF Size: 1992 bp

OTI Disclaimer: The molecular sequence of this clone aligns with the gene accession number as a point of reference only. However, individual transcript sequences of the same gene can differ through naturally occurring variations (e.g. polymorphisms), each with its own valid existence. This clone is substantially in agreement with the reference, but a complete review of all prevailing variants is recommended prior to use. [More info](#)

OTI Annotation: This clone was engineered to express the complete ORF with an expression tag. Expression varies depending on the nature of the gene.

Components: The ORF clone is ion-exchange column purified and shipped in a 2D barcoded Matrix tube containing 10ug of transfection-ready, dried plasmid DNA (reconstitute with 100 ul of water).

Reconstitution Method:

1. Centrifuge at 5,000xg for 5min.
2. Carefully open the tube and add 100ul of sterile water to dissolve the DNA.
3. Close the tube and incubate for 10 minutes at room temperature.
4. Briefly vortex the tube and then do a quick spin (less than 5000xg) to concentrate the liquid at the bottom.
5. Store the suspended plasmid at -20°C. The DNA is stable for at least one year from date of shipping when stored at -20°C.

RefSeq: [NM_001162950.1](#), [NP_001156422.1](#)

RefSeq Size: 6916 bp

RefSeq ORF: 1995 bp

Locus ID: 53417

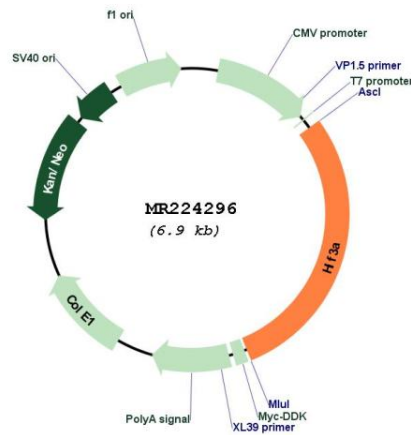
UniProt ID: [Q0VBL6](#)

Cytogenetics: 7 A2

MW: 73.6 kDa

Gene Summary: Acts as a transcriptional regulator in adaptive response to low oxygen tension. Acts as a regulator of hypoxia-inducible gene expression (PubMed:9840812, PubMed:11734856, PubMed:21546903). Plays a role in the development of the cardiorespiratory system (PubMed:18070924).[UniProtKB/Swiss-Prot Function]

Product images:



Circular map for MR224296