

Product datasheet for **MR224293**

Ccdc83 (NM_029256) Mouse Tagged ORF Clone

Product data:

Product Type: Expression Plasmids
Product Name: Ccdc83 (NM_029256) Mouse Tagged ORF Clone
Tag: Myc-DDK
Symbol: Ccdc83
Synonyms: 4930549K11Rik; 4930554C01Rik; 4932423M01Rik
Mammalian Cell Selection: Neomycin
Vector: pCMV6-Entry (PS100001)
E. coli Selection: Kanamycin (25 ug/mL)
ORF Nucleotide Sequence: >MR224293 ORF sequence
Red=Cloning site Blue=ORF Green=Tags(s)

TTTTGTAATACGACTCACTATAGGGCGGCCGGAATTCGTCGACTGGATCCGGTACCGAGGAGATCTGCC
GCC**CGATCGCC**

ATGGACAGCTCGGCCAAAGGAAGCAAAAAGGATGCCCTGATGGACCACCAAAGACTCGAAGCTGCCTG
TCAGTGAGGCCCTTCTGGACTATCATCGTGAAATAAAGGAGAATGCGGTGGAGCGATTTCATGTTCCATAT
CAAGAAGCTGAGGAAAAGAATCAAAGTACCAAGAGAGGAATAGACGCTTGAAGGAGGAACAGAATTGG
CACATAAAGAATCTTATAAAAAGAACTGAAAGAGAAGAATTTGGATGAGGCACCAATAGTAACAAGAGAGG
AAGTGGAGGAGGCAATGAAGGAAAAATGGGAGTTTGAAGACAACAGGAGCAAGCTTGAAGAAAATGCG
CATACAAATAAATGAGGCTGAGAAGCTATTTCTTGAAAACTCAGTGAAAAGGAATATTGGGAAGAGTAC
AAGAATGTAGGGAGCGCTCAGCACGCTCAACTCATTGTTTCCTTACAAAATGACATCGACACAGTTAAAG
AAAATGCAGAGAAAAATGTCAGAACAGTATAAAGTACCCTGGAAGATGAAAAAAGAGGATATCCAGAGA
ACAATGATCCAAGTAAACAGAGGAAAGAATGGGCCACACAGCAGCTGTAAGGTTTCATTGACAAGAAC
AACTATCGAGAGATCTGGGAAAATGACTGGCTAAAAAAGAAAGGTGACACAGCATCCTTTGGAAATGTGC
TCAGCCTTCTTGACTTCTTCCCCTGACCTGCACACGGCAGAACCTTGTAAGCAGTGGTCAAAGCAG
AGGTTCCCTTAGGATCCTGGCTCCCTTTGCACTGCAGCTCTGGAGCAAGCTCTCTGGTCTTCTCCCACA
CTGGTAACCCCTGATCCAGTCTGCATAATATGGAGTTTTGGACCAGGACAAACAAACAGCATGGCTATTT
GCCCC

ACGCGTACGCGGCCGCTCGAGCAGAACTCATCTCAGAAGAGGATCTGGCAGCAATGATATCCTGGATT
ACAAGGATGACGACGATAAGGTTTAA



[View online »](#)

Protein Sequence: >MR224293 protein sequence
 Red=Cloning site Green=Tags(s)

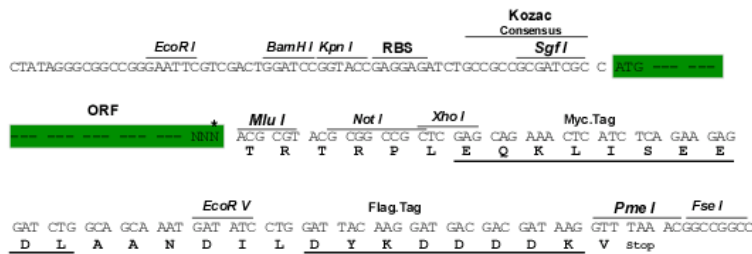
MDSSAKGSKKDAPDGPDKSLPVSEALLDYHREIKENAVERFMFHIIKLRKKNQKYQERNRRLKEEQNW
 HIKNLIKELKEKNLDEAPIVTREEVEEAMKEKWEFERQQEASLKEMRIQINEAEKLFLEKLSEKEYWEEY
 KNVGSAQHAQLIVSLQNDIDTVKENAEKMEQYKVTLEDEKKRISRETMIIQLKQRKEWATQHAVRFIDKN
 NYREIWENDWLKKEGDTASFQNVLSLLDFLPPDLHTAEPVSSGQSRGSLRILAPFALQLWSKLSGLLPT
 LVTPDPVCIISFSGPGQTNSMAICP

TRTRPLEQKLISEEDLAANDILDYKDDDDKV

Restriction Sites: SgfI-MluI

Cloning Scheme:

Cloning sites used for ORF Shuttling:



* The last codon before the Stop codon of the ORF

ACCN: NM_029256

ORF Size: 918 bp

OTI Disclaimer: The molecular sequence of this clone aligns with the gene accession number as a point of reference only. However, individual transcript sequences of the same gene can differ through naturally occurring variations (e.g. polymorphisms), each with its own valid existence. This clone is substantially in agreement with the reference, but a complete review of all prevailing variants is recommended prior to use. [More info](#)

OTI Annotation: This clone was engineered to express the complete ORF with an expression tag. Expression varies depending on the nature of the gene.

Components: The ORF clone is ion-exchange column purified and shipped in a 2D barcoded Matrix tube containing 10ug of transfection-ready, dried plasmid DNA (reconstitute with 100 ul of water).

Reconstitution Method:

1. Centrifuge at 5,000xg for 5min.
2. Carefully open the tube and add 100ul of sterile water to dissolve the DNA.
3. Close the tube and incubate for 10 minutes at room temperature.
4. Briefly vortex the tube and then do a quick spin (less than 5000xg) to concentrate the liquid at the bottom.
5. Store the suspended plasmid at -20°C. The DNA is stable for at least one year from date of shipping when stored at -20°C.

Note: Plasmids are not sterile. For experiments where strict sterility is required, filtration with 0.22um filter is required.

RefSeq: [NM_029256.1](#), [NM_029256.2](#), [NM_029256.3](#), [NP_083532.1](#)

RefSeq Size: 1546 bp

RefSeq ORF: 918 bp

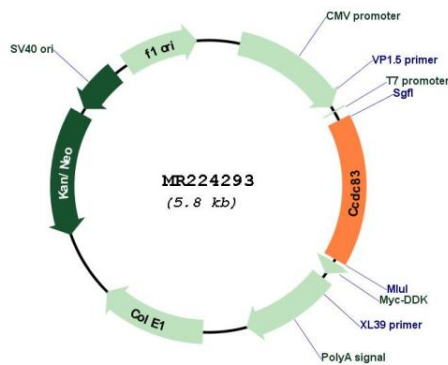
Locus ID: 75338

UniProt ID: [Q9D4V3](#)

Cytogenetics: 7 E1

MW: 35.6 kDa

Product images:



Circular map for MR224293