

Product datasheet for MR224289

Myo1b (NM_001161817) Mouse Tagged ORF Clone

Product data:

Product Type:	Expression Plasmids
Product Name:	Myo1b (NM_001161817) Mouse Tagged ORF Clone
Tag:	Myc-DDK
Symbol:	Myo1b
Synonyms:	AA406997; MIH-L; MMIa
Mammalian Cell Selection:	Neomycin
Vector:	pCMV6-Entry (PS100001)
E. coli Selection:	Kanamycin (25 ug/mL)
ORF Nucleotide Sequence:	>MR224289 representing NM_001161817 Red=Cloning site Blue=ORF Green=Tags(s)

TTTTGTAATACGACTCACTATAGGGCGCCGGGAATTCGTCGACTGGATCCGGTACCGAGGAGATCTGCC
GCC**CGATCGCC**

ATGGCCAAAATGGAGGTGAAATCCTCACTTCTGGACAATATGATCGGTGTTGGAGATATGGTTCTTTAG
AGCCGCTCAATGAGGAGACGTTTCATCGACAACCTGAAGAAGCGCTTCGACCACAATGAGATATACATA
CATTGGGAGCGTGGTTATATCTGTTAACCCCTACCGTCTTGGCCATATATTCGCCGGAGAAAAGTGAA
GATTACAGAAAATAGAACTTCTATGAAGTGAAGCCCTCACATCTTGTCTTGTCCGATGAAGCATAACAGAT
CCCTCCGTGATCAAGATAAAGATCAATGCATTCTCATTACTGGGAGAGTGGAGCAGGAAAAACAGAGGC
CAGCAAGCTCGTCATGTCCTATGTCGCTGCCGTGTGCGGAAAAGGAGCAGAAGTCAATCAGTCAAGGAA
CAGCTTCTGCAGTCCAACCTGTCTGGAAGCTTTTGGAAATGCCAAGACTGTGAGGAATGACAACCTCAT
CTAGATTCGGCAAATACATGGATATTGAATTTGACTTTAAAGGCGATCCGCTGGGAGGAGTGATAAGTAA
CTATCTTTTAGAGAAATCTCGTGTGTTAAGCAGCCAAGAGGTGAAAGAACTTCCATGTGTTCTATCAG
CTGCTCTCAGGCGCCTCTGAGGAGCTCCTCTACAAGCTTAAAGCTGGAGCGGGATTTCAGCAGATACAACT
ATCTGAGTCTGGACTCTGCTAAAGTTAATGGTGTGGATGATGCTGCCAATTCAGAACTGTTAGGAATGC
GATGCAGATCGTGGCTTTCTGGATCATGAGCCGAGGCTGTCTGGAGGTAGTGGCAGCCGTTTTGAAA
CTGGGAAACATCGAGTTCAAGCCTGAATCACGAGTGAATGGTTTGGATGAAAGCAAAATCAAAGATAAAA
ATGAGTTAAAAGAAATTTGCGAGTTGACCAGCATCGATCAGGTGGTTTTAGAAAGAGCGTTCAAGTTCCG
AACAGTTGAAGCGAAGCAGGAGAAAAGTTTCAACCAGCTGAATGTGGCTCAGGCTTATTATGCCCGTAT
GCCCTGGCTAAAAACCTCTACAGCCGCTTGTTCATGGTTGGTAAATCGTATCAACGAAAGCATTAAAGG
CACAAACAAAAGTGAGAAAGAAGGTCATGGGTGTTCTGGACATTTATGGCTTTGAAATTTGAGGATAA
CAGCTTCGAGCAGTTTATTATTAATGTAATGAAAAGCTTCAACAAATCTTCATCGAACTTACCCTC
AAAGAAGGCAAGAGGAATATATTCGGGAGGACATAGAATGGACTCACATTGACTACTTCAACAATGCTA
TCATTTGTGACCTAATAGAAAATAACACAAATGGAATCTTGGCCATGCTGGATGAAGAGTGCCTGAGACC
CGGCACTGTTACAGATGAGACCTTCTGAAAAGCTGAACCAAGTCTGTGCCACCACCAGCACTTTGAG



[View online »](#)

AGCAGGATGAGCAAGTGTCCCGCTTTCTCAACGACACAACCCTGCCCCACAGCTGCTTCAGAATCCAGC
ATTATGCTGGCAAGGTGCTTACCAGGTGGAAGGATTTGTTGACAAGAACAATGACCTTCTGTACCGGGA
CCTGTCTCAAGCCATGTGGAAGGCCGGCCACTCCCTCATCAAGTCTCTGTTTCTGAAGGAAATCCTGCA
AAGGTCAACCTGAAGAGACCTCCCACCGCAGGCTCCAGTTCAAGGCGTCTGTGGCCACGCTGATGAGAA
ACCTGCAGACCAAGAACCCGAACATACATCAGGTGCATCAAGCCAAATGATAAAAAGGCAGCTCACATTTT
CAATGAGAGTCTCGTATGCCATCAGATCAGGTACCTGGGTCTTTGGAGAACGTTTCGAGTGAGACGGGCA
GGCTATGCCTTCAGGCAGGCCTATGAACCTTGCCTGAAAAGATACAAGATGCTTTGCAAAACAACTGGC
CTCACTGGAAGGACCAGCAAGGTCTGGCGTGGAGGTTCTGTTTAAATGAGCTAGAGATTCTGTGGAAGA
GCACTCCTTCGGGAGATCCAAGATATTCATCCGAAACCCACGGACATTATTCCAACCTAGAAGACCTAAGG
AAGCAGCGGCTGGAGGACCTGGCCACTCTCATTGAGAAGATTTATCGAGGATGGAATGCCGTACACATT
TTCTGCTCATGAAAAGAAGCCAAGTTGTGATTGCTGCCTGGTACAGGAGATATGCGCAACAAAAGCGGTA
CCAGCAGATAAAGAGTTCAGCCCTGGTATTGAGTCTGATCCGGGGCTGGAAGGCTCGAAAAATCCTG
CGGGAGCTGAAGCATCAGAAGCGCTGTAAGGAGGCAGCCACCACCATCGCGGCGTACTGGCATGGCACCC
AGGCGCGAAGGGAGCTGAGACGGCTGAAGGACGAGGCTAGGAATAAGCACGCTATTGCGATTATTTGGGC
TTACTGGCTTGGATCGAAGGCACGGAGGGAGTTGAAACGCTTGAAGGAGGAGGCTAGGCGTAAGCATGCA
GTTGCTGTCAATTTGGGCTTACTGGCTTGGACTGAAGGTACGCAGGGAATACAGGAAATCTTTAGAGCAA
ATGCTGGAAGAAAATCTATGAGTTTACTTCAAAGAATTGTGCAAAAATACTTGTGGAAATGAAAAA
TAAAATGCCTTCTTGTACCGATAGATAAAAATTGGCCATCAAGACCTTACCTGTTCTTGGATTGACT
CACAAGGAGCTAAAAAGGATCTTCCACTTGTGGAGGTGTAACAAAATACAGGGATCAATTCACAGACCAGC
AGAAACTATTTATGAAGAGAAGCTCGAGGCCAGCGAACTCTTCAAAGACAAGAAGGCTTTATATCCTTC
TAGTGTTGGGCAACCATTCCAAGGAGCTTACCTGGAAATCAACAAGAACCACAAAATATAAGAACTCAA
GATGCCATTGAAGAGAAGATCATTATTGCTGAGGTTGTGAACAAAATTAATCGGGCTAATGGGAAGAGTA
CATCTCGGATTTTCTCTTAACAAACAATAACCTTCTCCTTGTGACAAAAGTCTGGGCAGATCAAGTC
CGAGGTCCCCCTGGTAGATGTGACCAAGGTTTCCATGAGTTCCCAGAACGATGGTTTCTTTGCAGTGCAC
CTCAAGGAGGTTTCAGAAGCGGCTAGTAAAGGGGACTTTCTCTTCAAGCAGTGACCACCTGATTGAAATGG
CAACCAAGCTGTATCGCACGACTCTCAGCCAACTAAACAGAAGCTCAACATCGAGATTTCCGATGAGTT
CCTGGTACAGTTCAGACAGGACAAAGTATGTGTGAAGTTTATTCAAGGCAACCAGAAAAATGGGAGCGTG
CCAACCTGCAACGAAAGAACAACAGACTCCTTGAAGTCGCTGTCCCT

ACGGTACGCGGCCGCTCGAGCAGAACTCATCTCAGAAGAGGATCTGGCAGCAATGATATCCTGGATT
ACAAGGATGACGACGATAAGGTTTAA

Protein Sequence: >MR224289 representing NM_001161817
 Red=Cloning site Green=Tags(s)

MAKMEVKSSLLDNMIGVDMVLLLEPLNEETFIDNLKKRFDHNEIYTYIGSVVISVNPYRSLPIYSPEKVE
 DYRNRNFYELSPHIFALSDAYRSLRDQDKQCILITGESGAGKTEASKLVMSYVAACVCGKGAEVNQVKE
 QLLQSNPVEAFGNAKTVRNDNSSRFGKYMDIEFDKGDPLGGVISNYLLEKSRVVKQPRGERNFHVYQ
 LLSGASEELLYKLERDFSRYNYSLDSAKVNGVDDAANFRTVRNAMQIVGFLDHEAEAVLEVVAAVLK
 LGNIEFKPESRVNGLDESKIKDKNELKEICELTSIDQVLERAFSFRVVEAKQEKVSTTLNVAQAYYARD
 ALAKNLYSRLFSWLVNRINESIKAQTKVRKVMGVLDIYGFEIFEDNSFEQFIINYCNEKLQQIFIELTL
 KEEQEEYIREDIEWTHIDYFNNAIICDLIENNTNGILAMLDEECLRPGTVTDETFLEKLNQVCATHQHFE
 SRMSKCSRFLNDTTLPHSCFRIQHYAGKVLQVEGFVDKNDLLYRDL SQAMWKAGHSLIKSLFPEGNPA
 KVNLRKRPPTAGSQFKASVATLMRNLQTKPNYIRCIPNDKKAHIFNESLVCHQIRYLGLENVRRRA
 GYAFRQAYEPCLEKRYKMLCKQTPHWKGPARGVEVLFNELEIPVEEHSFGRSKIFIRNPRTLFLQEDLR
 KQRLEDLATLIQKIYRGWKCRTFFLLMKRSQVVAAWYRRYAQQKRYQQIKSSALVIQSYIRGWKARKIL
 RELKHQRCKEAATTIAAYWHGTQARRELRRLKDEARNKHAI AVIWAYWLGSKARRELKRLKEEARRKHA
 VAVIWAYWLGKVRREYRKFFRANAGKKIYEFTLQRIYVQYLLKMKMPSLSPIDKNWPSRPYFLDST
 HKELKRIFHLWRCKYRDQFTDQQLIYEKLESELFKDKKALYPSVGPFPQAYLEINKNPKYKLLK
 DAIEEKIIIAEVVNKINRANGKSTSRIFFLLTNNLLLADQKSGQIKSEVPLVDVTKVSMSQNDGFFAVH
 LKEGSEAAASKGDFLFSSDHLIEMATKLYRTTLSQTKQKLNIEISDEFVQFRQDKVCKVFIQGNQKNGSV
 PTCKRKNRLLLEVAVP

TRTRPLEQKLISEEDLAANDILDYKDDDDKV

Chromatograms: https://cdn.origene.com/chromatograms/mm9101_e06.zip

Restriction Sites: SgfI-MluI

Cloning Scheme:

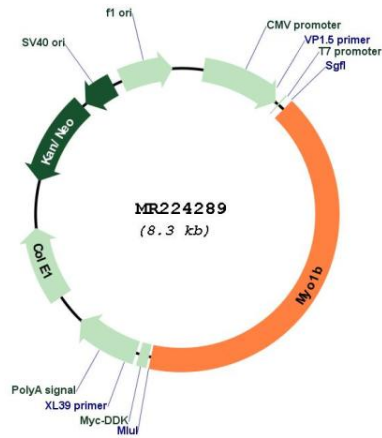


ACCN: NM_001161817

ORF Size: 3408 bp

OTI Disclaimer:	The molecular sequence of this clone aligns with the gene accession number as a point of reference only. However, individual transcript sequences of the same gene can differ through naturally occurring variations (e.g. polymorphisms), each with its own valid existence. This clone is substantially in agreement with the reference, but a complete review of all prevailing variants is recommended prior to use. More info
OTI Annotation:	This clone was engineered to express the complete ORF with an expression tag. Expression varies depending on the nature of the gene.
Components:	The ORF clone is ion-exchange column purified and shipped in a 2D barcoded Matrix tube containing 10ug of transfection-ready, dried plasmid DNA (reconstitute with 100 ul of water).
Reconstitution Method:	<ol style="list-style-type: none">1. Centrifuge at 5,000xg for 5min.2. Carefully open the tube and add 100ul of sterile water to dissolve the DNA.3. Close the tube and incubate for 10 minutes at room temperature.4. Briefly vortex the tube and then do a quick spin (less than 5000xg) to concentrate the liquid at the bottom.5. Store the suspended plasmid at -20°C. The DNA is stable for at least one year from date of shipping when stored at -20°C.
RefSeq:	NM_001161817.2 , NP_001155289.1
RefSeq Size:	5053 bp
RefSeq ORF:	3411 bp
Locus ID:	17912
Cytogenetics:	1 26.58 cM
MW:	132.1 kDa
Gene Summary:	Motor protein that may participate in process critical to neuronal development and function such as cell migration, neurite outgrowth and vesicular transport.[UniProtKB/Swiss-Prot Function]

Product images:



Circular map for MR224289