

Product datasheet for **MR224259**

Nlrp6 (NM_001081389) Mouse Tagged ORF Clone

Product data:

Product Type:	Expression Plasmids
Product Name:	Nlrp6 (NM_001081389) Mouse Tagged ORF Clone
Tag:	Myc-DDK
Symbol:	Nlrp6
Synonyms:	A1504961; Nalp6; Navr/Avr; Pypaf5
Mammalian Cell Selection:	Neomycin
Vector:	pCMV6-Entry (PS100001)
E. coli Selection:	Kanamycin (25 ug/mL)



[View online »](#)

ORF Nucleotide
Sequence:

>MR224259 representing NM_001081389
Red=Cloning site Blue=ORF Green=Tags(s)

TTTTGTAATACGACTCACTATAGGGCGGCCGGGAATTCGTCGACTGGATCCGGTACCGAGGAGATCTGCC
GCC**CGGATCGCC**

ATGGATGCCGCTGGAGCCTCCTGCTCCAGCGTGGATGCAGTGGCAAGGGAGCTGCTTATGGCTACACTGG
AGGAGCTGAGCCAGGAGCAGCTGAAGCGCTTCCGCCACAAGCTAAGGGATGCGCCCTGGATGGCCGCAG
CATCCCGTGGGGGCGACTGGAGCGCTCAGACGCTGTGGACCTTGTGACAAGCTCATTGAGTTCTATGAG
CCAGTGCCAGCTGTAGAAATGACCCGGCAGGTCCTGAAGAGGTCGGATATTGAGATGTGGCCTCGCGAC
TTAAGCAACAGCAGCTACAGAAGCTCGGCCACCTCGGTGCTTCTCCTCGTGTGACGTTCAAGAAGAA
GTACCGCGAGCACGTGCTACGACAGCATGCTAAGGTGAAGGAGAGGAATGCTCGCTGTGAAGATCAAC
AAGCGCTTACCAAGCTGCTCATCGCTCCGGGACCGGCGCTGTGGAGGACGAGCTGTGGGGCCGTTGG
GGGAGCCGGAGCCGAACGCGCTCGGCGCTCGGACACGCACACTTTAATCGGCTTCCGGGGAATGA
TGAAGAGAGCTCGCAGCCGCTGACCGTGGTGTGTCAGGGCCCGCAGGCATCGGCAAAACCATGGCCGCC
AAGAAAATCCTCTATGACTGGGCAGCAGTAAGCTATACCACAGCCAGGTGGACTTTGCCTTCTCATGC
CGTGGCGCGAGCTGTGGAGCGGCCGGAAAGCGCAGCTTGGCGGACCTGGTGTGGACAGTGCCCGGA
CCGCGCTTGGCCAGTGAAGCGGATACTGGCGCAACCCAATCGCCTACTGTTATCCTGGACGGTGCAGAC
GAGCTGCCTACTTTACCATCCTCAGAGGCCACTCCCTGCAAAGACCCTTTGGAGGCTACAAGTGGCTTGA
GAGTGTGAGCGGGCTGTGAGCCAGGAGCTGTTACCAGGAGCTCGTTGCTAGTGACTACACGCCATGC
CGCTACAGGGAGGCTGCAGGGCAGATTGTGCTCGCCACAGTGCAGAGAAATACGCGGCTTCTCAGACAAA
GACAAAAAAGTATTTCTCAAGTCTTCCGGGACGAGAGGAAGGCAGAGCGCGCTTACCGCTTCTGTA
AAGAGAACGAGACGCTGTTTGCACGTGTGCTTGTGCCCTTCGTGTGCTGGATCGTGCACAGTGTGCA
GCAGCAGCTAGAGCTGGGCCGGGATCTCTCTCGTACCTCCAAGACCACTACTTGTGTACTGCTCTTC
ATCACCAGCATGCTGAAGTCTGCAGGCACCAATGGACCCCGGTTTCAGGGAGAGCTGAGAACGCTGTGTC
GCCTGGCCAGGGAGGGCATCCTGGATCATCATAAAGCACAAATCTCAGAAGAGGACCTGGAGAAATTGAA
GCTTCGGGGTTCCCAAGTTCAGACAATATTTCTCAACAAGAAAGAGATACCAGGAGTGTAAAACTGAG
GTCACCTACCAGTTCATTGACCAGAGCTCCAGGAGTTCCTGGCTGCATTGTACCTACTAGAAGCTG
AGCGAACTCCGGGACGCCCGCAGGCGGTGTGCAGAAGCTCCTGAACTCTGACCGGAGCTACGTGGTCA
TCTTGCCTGACCACCCGATTCTCTTTGGCTGCTAAATACAGAGGGGCTTCGTGACATTGAAACCAT
TTTGGCTGTGTGGTGCCAGATCATGTGAAAAGGACACCCTGCGGTGGTACAAGGACAGAGCCACCCCA
AGGGGCCACCAGTAGGGGCAAAAAGACTGCTGAGCTGGAGGACATCGAGGACGCAGAGGAGGAGGAGGA
GGAAGAGGAGGACCTCAATTTGGACTGGAGCTGCTGTACTGCCTGTATGAGACACAGGAGGAGGATTTT
GTTTCGACAGGCTCTCAGCAGCCTTCAGAGATAGTACTGGAGCGAGTCAAGTTGACCCGCATGGACCTTG
AAGTTCTGAATTACTGCGTGCAGTGTGCCAGATGGCCAGGCTCTGAGACTGGTGTGAGCTGTGGGCTGGT
GGCGGCAAGGAGAAGAAGAAGAAGAAGAGCCTGGTGAAGCGGCTGAAGGGGAGCGTTACAGGCACC
AACCTTGTCTTCTCTACAGCTCTCAAAGCACCAAGAACAACCCCAAGTCTCCTTGTGCTGCCAC
TCTGTGAGACAATGACTACCCGAAATGTATCTGAGTGTCTGATCTTGTGACACTGCAGACTCCCTGA
TGCAGTTTGGCGAGACCTTCCGAGGCCCTGAAGGTAGCTCCTGCCCTAAGGGAGTTGGCCTCCTCCAG
AGCCGGCTCACCAACACAGGCCCTGCGTTTACTGTGCGAAGGCCTGGCTTGGCCCAAGTGCCAGGTGAAGA
CACTCAGGATGCAGCTGCCTGACCTCCAAGAGGTGATCAATTACTTGGTATCGTGTCCAGCAGAGCCC
AGTCTGACCACTCTGGACCTCAGTGGCTGTGAGTGCCTGGCGTCATTGTGAACTCTGTGTGACGCC
CTGAAGCACCCCTAAATGCTCCCTAAAGACCCTCAGTCTGACCTCTGTGGAGCTGAGTGAGAACTCACTGA
GGGATCTCAAGCTGTGAAGACATCAAAGCCAGATCTGTCCATCATATATTCAAAA

ACGCGTACGCGGCCGCTCGAGCAGAACTCATCTCAGAAGAGGATCTGGCAGCAATGATATCTGGATT
ACAAGGATGACGACGATAAGGTTTAA

Protein Sequence: >MR224259 representing NM_001081389
 Red=Cloning site Green=Tags(s)

MDAAGASCSSVDAVARELLMATLEELSQEQLKFRHKLKRDAPLDGRSIPWGLRERSDAVDLVDKLIEFYE
 PVPAVEMTRQVLKRSDIRDVASRLKQQQLQKLQKLGPTSVLLSVSAFKKKYREHVLQHQHAKVKERNARSVKIN
 KRFTKLLIAPGTGAVEDELLGPLGEPERARRSDTHTFNRLFRGNDEESSQPLTVVLLQGPAGIGKTMMA
 KKILYDWAAGKLYHSQVDFAFFMPCGELLERPGKRSADLVLDQCPDRAWPVKRIQAQPNRLLFILDGAD
 ELPTLPSSSEATPCKDPLEATSGLRVLSGLLSQELLPGARLLVTRHAATGRLQGRLCSPQCAEIRGFSDK
 DKKKYFFKFRDERKAERAYRFVKENETLFCVFPVFCVIVCTVLQQQLELGRDLSRTSKTTTSVYLLF
 ITSMLKSAGTNGPRVQGELRTLCLAREGILDHHAQFSEEDLEKLLRGSQVQIFLNKKEIPGVLKTE
 VTYQFIDQSFQFLAALSYLEAERTPGTPAGGVQKLLNSDAELRGHLALTTRFLFGLLNTEGLRDIGNH
 FGCVVPDHHKDTLRWVQGSHPKPPVGAKTAELEDIEDAEEEEEEEEEDLNFGLELLYCLYETQEEDF
 VRQALSSLPEIVLERVRLTRMDLEVLNYCVQCCPDGQALRLVSCGLVAAKEKKKKKSLVKRLKGSVTGT
 NLVLSLYSSQSTKKQPPVSLRPLCETMTTPKCHLSVLILSHCRLPDAVCRDLSEALKVAPALREGLLQ
 SRLTNTGLRLLCEGLAWPKCQVKTLMQLPDLQEVINYLVIVLQQSPVLTTLDLSGCQLPGVIVEPLCAA
 LKHPKCSLKTLSLTSVELSENSLRDLQAVKTSKPDLSIIYSK

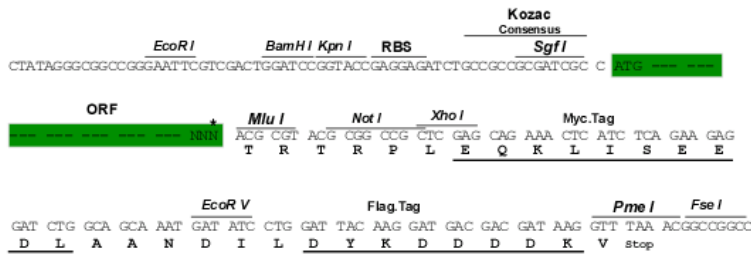
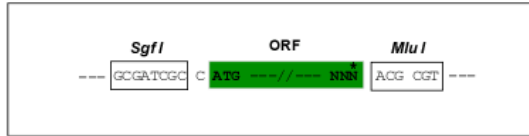
TRTRPLEQKLISEEDLAANDILDYKDDDDKV

Chromatograms: https://cdn.origene.com/chromatograms/ja1463_h04.zip

Restriction Sites: SgfI-MluI

Cloning Scheme:

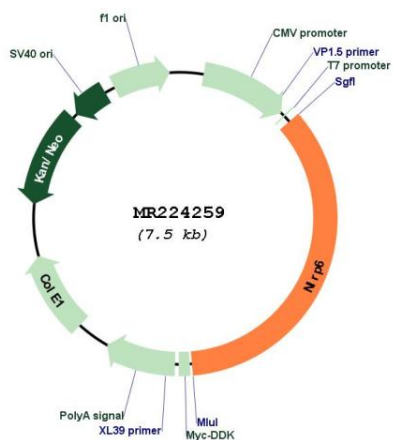
Cloning sites used for ORF Shuttling:



* The last codon before the Stop codon of the ORF

ACCN:	NM_001081389
ORF Size:	2646 bp
OTI Disclaimer:	The molecular sequence of this clone aligns with the gene accession number as a point of reference only. However, individual transcript sequences of the same gene can differ through naturally occurring variations (e.g. polymorphisms), each with its own valid existence. This clone is substantially in agreement with the reference, but a complete review of all prevailing variants is recommended prior to use. More info
OTI Annotation:	This clone was engineered to express the complete ORF with an expression tag. Expression varies depending on the nature of the gene.
Components:	The ORF clone is ion-exchange column purified and shipped in a 2D barcoded Matrix tube containing 10ug of transfection-ready, dried plasmid DNA (reconstitute with 100 ul of water).
Reconstitution Method:	<ol style="list-style-type: none">1. Centrifuge at 5,000xg for 5min.2. Carefully open the tube and add 100ul of sterile water to dissolve the DNA.3. Close the tube and incubate for 10 minutes at room temperature.4. Briefly vortex the tube and then do a quick spin (less than 5000xg) to concentrate the liquid at the bottom.5. Store the suspended plasmid at -20°C. The DNA is stable for at least one year from date of shipping when stored at -20°C.
RefSeq:	NM_001081389.1 , NP_001074858.1
RefSeq Size:	3823 bp
RefSeq ORF:	2649 bp
Locus ID:	101613
Cytogenetics:	7 F5
MW:	140.1 kDa
Gene Summary:	The protein encoded by this gene binds arginine-vasopressin and may be involved in the arginine-vasopressin-mediated regulation of renal salt-water balance. The encoded protein also mediates inflammatory responses in the colon to allow recovery from intestinal epithelial damage and protects against tumorigenesis and the development of colitis. Finally, this protein can increase activation of NF-kappa-B, activation of CASP1 through interaction with ASC, and cAMP accumulation. [provided by RefSeq, Feb 2013]

Product images:



Circular map for MR224259