

Product datasheet for **MR224161**

Slc20a2 (NM_011394) Mouse Tagged ORF Clone

Product data:

Product Type:	Expression Plasmids
Product Name:	Slc20a2 (NM_011394) Mouse Tagged ORF Clone
Tag:	Myc-DDK
Symbol:	Slc20a2
Synonyms:	MolPit2; Pit-2; Pit2; Ram-1; Ram1
Mammalian Cell Selection:	Neomycin
Vector:	pCMV6-Entry (PS100001)
E. coli Selection:	Kanamycin (25 ug/mL)



[View online »](#)

ORF Nucleotide
Sequence:

>MR224161 representing NM_011394
Red=Cloning site Blue=ORF Green=Tags(s)

TTTTGTAATACGACTCACTATAGGGCGGCCGGAATTCGTCGACTGGATCCGGTACCGAGGAGATCTGCC
GCCGCGATCGCC

ATGGCCATGGACGGGTATCTGTGGATGGTCATTTTGGGTTTCATTATTGCTTTCATCCTGGCGTTTTTCAG
TCGGTGCCAACGATGTTGCCAATTCCTTCGGAACCGCGGTGGGCTCTGGCGTGGTGACCCTGAGACAGGC
ATGCATTTCTGGCTTCCATATTTGAAACCACTGGCTCTGTGCTGCTGGGGCGAAGGTGGGGGAGACCATT
CGGAAAGGCATCATTGACGTGAATCTCTACAACGAGACCGTGAAACGCTAATGGCTGGGGAAGTGAGCG
CCATGGTTGGTTCAGCTGTCTGGCAGTTGATCGCGTCTTCTCTGAGACTGCCAATCTCGGGGACTCACTG
CATCGTCGGCTCCACCATCGGCTTCTACTCGTGGCGATTGGCCCGAAAGGAGTGCAAGTGGAGGCTC
GTCAAGATTGTCGCTCCTGGTTTATATCGCCACTTCTTCTGGCTTCATGTCCGGCGTGTGTTTCATAC
TAATCAGAATGTTTCATCCTTACTAAGGAGGACCCTGTTCCAAACGGTCTCCAGGCACTGCCTCTGTTTTA
TGCTGCTACCATAGCAATAAATGTCTTTCCATCATGTACACAGGAGCGCCAGTGTGGCCTGTGCTC
CCCATCTGGGCAATAGCGCTCATATCCTTCGGCGTTGCTCTGCTGTTTCGCTTCTTCGTGTGGCTATTCCG
TGTGTCCATGGATGAAGAGGAAGATAGCAGGCAGATTAGAGAAGGAGAGCGCTCTGTCCCGCGCTTCCGA
TGAAAGCCTCAGGAAAGTACAGGAAGCTGAGTCCCTGGCTTCAAGGAGCTCCCTGGTGCCAAACCCAGC
GATGACAGCGCTGTCCCTCACCAGCCTGGCTGGGGAGGCCGTGGGGCCCTCAGAAGGCACGTCAGCAG
GGAACCACCCCGGGCTTCTATGGACGGGCACTTTCATGACTCACGGCTCTGCCAAGTCAACCATCTC
CAATGGTACATTTGGCTTTGAAGCCACATGAGGAATGACGGTACGTTTATCATACTGTACACAAAAGAC
TCGGGGCTCTACAAGACTTGTGCACAAAATCCACGTAGACAGGGGCTCCGAGGAGAAACCCACTCAGG
AAAACAACACTACAGGCTGCTTCGAGGAACAACAGTTACACCTGCTACACTGCGGCCATCTGCGGCATGCC
GGTGACACACCACTTTAGAGCCTCGGACACCTCCTCTGCCCCGAGGACAGTGAGAAGCTGGTGGGTGAC
AGTGTGTCTTATCCAAGAAGAGGCTCCGCTACGACAGCTACTCCAGCTACTGCAACGCAGTGGCTGAGG
CCGAGATTGAGGCCGAAGAGGGTGGTGTGGAAATGAGGCTGGCCTCTGAGCTGGCCGACCCTGACCGGCC
TCACGAGGACCCACGGAGGAAGAGAAGGAGGAGAAGGACTCGGCAGAGGTCCACCTGCTTCCACTTC
CTGCAAGTCTCACTGCCTGCTTCGGTCTTCTGCTCACGGTGGCAATGACGTGAGCAATGCTATTGGTC
CCCTTGTGGCTTTGTGGCTGATATCAACAAGGCGGAGTTACACAAGAAGCTGCTACTCCAGTCTGGCT
GCTGTTTTACGGAGGAGTTGGCATTGTCACAGGCTCTGCGGTTTGGGGCAGAAGAGTGATCCAGACCATG
GGGAAGGACCTCACGCCATCACACCGTCCAGTGGCTTCACTATTGAGCTGGCCTCTGCCTTACCCTGG
TGATTGCCTCAAACATCGGGCTTCTGTGACACCACGCACTGCAAGGTGGGCTCCGTGGTGTGAGTGTGGG
CTGGATCCGCTCGCGGAAGGCTGTGGACTGGCGCCTTTCGGAACATTTTTGTTGCCTGGTTCGTGACT
GTGCCCGTGGCTGGACTTTCAGTGTGCTATCATGGCTCTCCTCATGTACATATGTGGTCTTTTTCTT
CCAGTCGG

ACGCGTACGCGGCCGCTCGAGCAGAACTCATCTCAGAAGAGGATCTGGCAGCAATGATATCCTGGATT
ACAAGGATGACGACGATAAGGTTTAA

Protein Sequence: >MR224161 representing NM_011394
Red=Cloning site Green=Tags(s)

MAMDGYLWMVILGFIIAFILAFSVGANDVANSFSGTAVGSGVVTLRQACILASIFETTGSVLLGAKVGETI
 RKGIIIDVNLVNETVETLMAGEVVSAMVGSVAVWQLIASFLRLPISGTHCIVGSTIGFSLVAIGPKGVQWML
 VKIVASWFIISPLLSGFMISVLFILIRMFILTKEDPVPNGLQALPLFYAATIAINVSIMYTGAPVLGLSL
 PIWAIALISFGVALLFAFFVWLFVCPWPKRKIAGRLEKESALSRASDES LRKVKQEAESPGFKELPGAKPS
 DDSAVPLTSLAGEAVGASEGTSAGNHPRASVYGRALSMTHGSAKSPISNGTFGFEGHMRNDGHVYHTVHKD
 SGLYKDLLHKKIHVDRGSEEKPTQENNYRLLRRNNSYTCYAAICGMPVHTTFRASDTSSAPEDSEKLVGD
 SVSYSKKRLRYDSYSSYCNAAVAEAEIEAEEGGVEMRLASELADDPDRPHEDPTEEEKEEKDSAEVHLLFHF
 LQVLTACFGSFAHGGNDVSNAIGPLVALWLIYQQGGVTQEAAATPVWLLFYGGVIGICTGLVWVGRRIQTM
 GKDLTPITPSSGFTIELASFTVVIASNIPLVSTTHCKVGSVAVGWIRSRKAVDWRLFRNIFVAWFVT
 VPVAGLFSAAIMALLMYICGLFSSSR

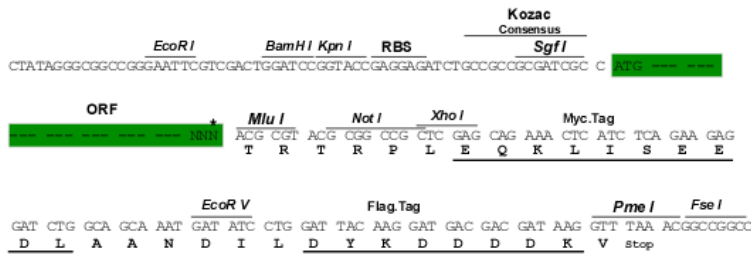
TRTRPLEQKLISEEDLAANDILDYKDDDDKV

Chromatograms: https://cdn.origene.com/chromatograms/mm9014_b01.zip

Restriction Sites: SgfI-MluI

Cloning Scheme:

Cloning sites used for ORF Shuttling:



ACCN: NM_011394

ORF Size: 1968 bp

OTI Disclaimer: The molecular sequence of this clone aligns with the gene accession number as a point of reference only. However, individual transcript sequences of the same gene can differ through naturally occurring variations (e.g. polymorphisms), each with its own valid existence. This clone is substantially in agreement with the reference, but a complete review of all prevailing variants is recommended prior to use. [More info](#)

OTI Annotation: This clone was engineered to express the complete ORF with an expression tag. Expression varies depending on the nature of the gene.

Components: The ORF clone is ion-exchange column purified and shipped in a 2D barcoded Matrix tube containing 10ug of transfection-ready, dried plasmid DNA (reconstitute with 100 ul of water).

Reconstitution Method:

1. Centrifuge at 5,000xg for 5min.
2. Carefully open the tube and add 100ul of sterile water to dissolve the DNA.
3. Close the tube and incubate for 10 minutes at room temperature.
4. Briefly vortex the tube and then do a quick spin (less than 5000xg) to concentrate the liquid at the bottom.
5. Store the suspended plasmid at -20°C. The DNA is stable for at least one year from date of shipping when stored at -20°C.

RefSeq: [NM_011394.3](#), [NP_035524.2](#)

RefSeq Size: 3658 bp

RefSeq ORF: 1971 bp

Locus ID: 20516

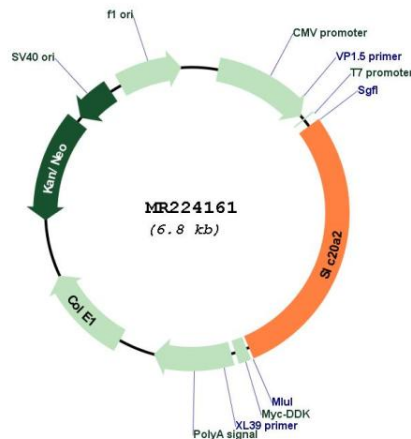
UniProt ID: [Q80UP8](#)

Cytogenetics: 8 11.42 cM

MW: 71.3 kDa

Gene Summary: Sodium-phosphate symporter which seems to play a fundamental housekeeping role in phosphate transport by absorbing phosphate from interstitial fluid for normal cellular functions such as cellular metabolism, signal transduction, and nucleic acid and lipid synthesis. In vitro, sodium-dependent phosphate uptake is not significantly affected by acidic and alkaline conditions, however sodium-independent phosphate uptake occurs at acidic conditions. May play a role in extracellular matrix, cartilage and vascular calcification. Functions as a retroviral receptor (By similarity).[UniProtKB/Swiss-Prot Function]

Product images:



Circular map for MR224161