

Product datasheet for MR224153

Rras (NM_009101) Mouse Tagged ORF Clone

Product data:

Product Type:	Expression Plasmids
Product Name:	Rras (NM_009101) Mouse Tagged ORF Clone
Tag:	Myc-DDK
Symbol:	Rras
Synonyms:	A1573426
Mammalian Cell Selection:	Neomycin
Vector:	pCMV6-Entry (PS100001)
E. coli Selection:	Kanamycin (25 ug/mL)
ORF Nucleotide Sequence:	>MR224153 representing NM_009101 Red=Cloning site Blue=ORF Green=Tags(s)

TTTTGTAATACGACTCACTATAGGGCGGCCGGAATTCGTCGACTGGATCCGGTACCGAGGAGATCTGCC
GCC**CGATCGCC**

ATGAGCAGCGGGCGGCGTCCGGGACTGGGCGGGGGCGGCCCGGGCGGGGGCCGGGACCCAGGGACC
CCCCGCCCGGCGAGACTCACAAGCTGGTGGTCGTAGGCGGCGGCGGCGTGGGCAAGAGCGCGTGACCAT
CCAGTTCATCCAGTCCTACTTTGTGTCTGACTATGATCCCACATTGAAGATTCCTACACAAAGATCTGC
ACTGTGGACGGCATCCCTGCACGGCTGGACATCCTGGACTGCGGGCAAGAGGAATTTGGTGCCATGC
GGGAGCAGTACATGCGTGTGGCAACGGCTTCTGCTGGTGTGGCCATTAAACGACAGGCAGAGTTCAA
TGAGGTGGCAAGCTCTTACACAGATCCTCAGAGTCAAGGACCGGGATGATTTCCCATTTGTGTTGGTT
GGGAACAAGGCAGATCTGGAGAACCAGCGCCAGGTCCTCCGGTCTGAAGCCTCCTTTTCAGTGCTCCC
ACCATGACTTACTTTGAGGCTCAGCCAAACTGCGTCTGAATGTGATGAGGCATTTGAGCAGCTGGT
GCGCGTGTCCGAAATACCAGGAACAAGAACTCCCTCTAGCCACCTAGTGTCTCCAGGAAGAAGGAT
GGAGGATGTCCCTGTGTCTGCTG

ACGCGTACGCGGCGGCTCGAGCAGAACTCATCTCAGAAGAGGATCTGGCAGCAATGATATCCTGGATT
ACAAGGATGACGACGATAAGGTTTAA



[View online »](#)

Protein Sequence: >MR224153 representing NM_009101
 Red=Cloning site Green=Tags(s)

MSSGAASGTGRGRPRGGGPGPRDPPPGETHKL VVVGGGVGSALTIQFIQSYFVSDYDPTIEDSYTKIC
 TVDGIPARLDILDTAGQEEFGAMREQYMRANGFLLVFAINDRQSFNEVGKLFQTILRVKDRDDFPILV
 GNKADLENQRQVLRSEASSFSASHHMTYFEASAKLRLNVDEAFEQLVRAVRKYQEQLPPSPSPAPRKKD
 GCPCVLL

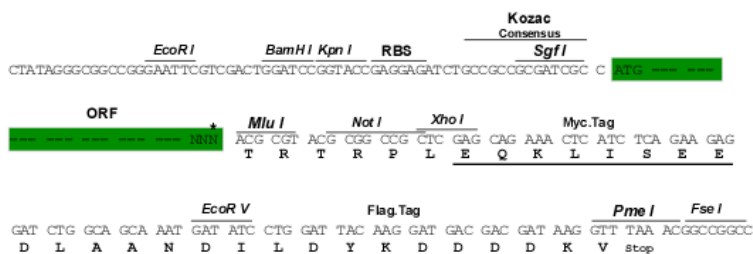
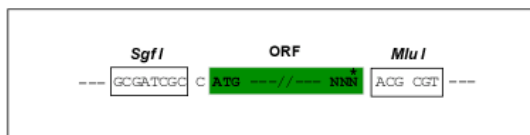
TRTRPLEQKLISEEDLAANDILDYKDDDDKV

Chromatograms: https://cdn.origene.com/chromatograms/mm9047_b09.zip

Restriction Sites: SgfI-MluI

Cloning Scheme:

Cloning sites used for ORF Shuttling:



* The last codon before the Stop codon of the ORF

ACCN: NM_009101

ORF Size: 654 bp

OTI Disclaimer: The molecular sequence of this clone aligns with the gene accession number as a point of reference only. However, individual transcript sequences of the same gene can differ through naturally occurring variations (e.g. polymorphisms), each with its own valid existence. This clone is substantially in agreement with the reference, but a complete review of all prevailing variants is recommended prior to use. [More info](#)

OTI Annotation: This clone was engineered to express the complete ORF with an expression tag. Expression varies depending on the nature of the gene.

Components: The ORF clone is ion-exchange column purified and shipped in a 2D barcoded Matrix tube containing 10ug of transfection-ready, dried plasmid DNA (reconstitute with 100 ul of water).

Reconstitution Method:

1. Centrifuge at 5,000xg for 5min.
2. Carefully open the tube and add 100ul of sterile water to dissolve the DNA.
3. Close the tube and incubate for 10 minutes at room temperature.
4. Briefly vortex the tube and then do a quick spin (less than 5000xg) to concentrate the liquid at the bottom.
5. Store the suspended plasmid at -20°C. The DNA is stable for at least one year from date of shipping when stored at -20°C.

RefSeq: [NM_009101.3](#)

RefSeq Size: 946 bp

RefSeq ORF: 657 bp

Locus ID: 20130

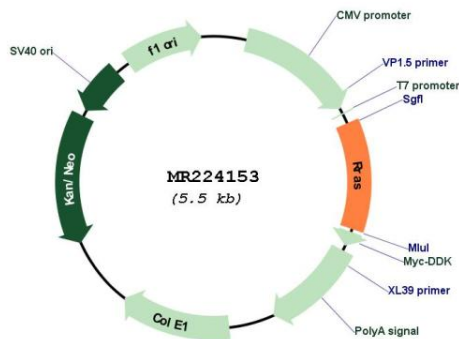
UniProt ID: [P10833](#)

Cytogenetics: 7 29.08 cM

MW: 24.2 kDa

Gene Summary: Regulates the organization of the actin cytoskeleton. With OSPBL3, modulates integrin beta-1 (ITGB1) activity.[UniProtKB/Swiss-Prot Function]

Product images:



Circular map for MR224153