

## Product datasheet for **MR224131**

### **Cdhr3 (NM\_001024478) Mouse Tagged ORF Clone**

#### **Product data:**

Product Type:	Expression Plasmids
Product Name:	Cdhr3 (NM_001024478) Mouse Tagged ORF Clone
Tag:	Myc-DDK
Symbol:	Cdhr3
Synonyms:	1110049B09Rik; BB172694; Cdh28
Mammalian Cell Selection:	Neomycin
Vector:	pCMV6-Entry (PS100001)
E. coli Selection:	Kanamycin (25 ug/mL)



[View online »](#)

**ORF Nucleotide Sequence:**

>MR224131 representing NM\_001024478  
 Red=Cloning site Blue=ORF Green=Tags(s)

TTTTGTAATACGACTCACTATAGGGCGGCCGGGAATTCGTCGACTGGATCCGGTACCGAGGAGATCTGCC  
 GCC**CGGATCGCC**

ATGACGGGGGAGTCATTGTCTTGTCTTTGGGATCACCTCAGGAGGGGAAGCTCTACACCTGTCTCC  
 ACCTGCCTGCCACTAGCAACGTGGCAGAGAACGCTCCACCTGCCACTTTGGTGCACAAGTTTTCTGTGAA  
 TTTATCAGTATCGTTGTACCTGTGATCCAGGGTTTCCCTTGGTAGCAACCCAAGGCCCTTCACGGAG  
 GCCTTCAGGGTGAACAGACTGTCAGCAACCAACTTTGAGGTGGTACCACCGGAAAGAACAAGTATTGATT  
 TTGAAAGAGGACCGAAAGCATTTCGATTTGCAGATTTACGTTAAGGATGATGTCGGTGTACAGATGTGCA  
 AGTCTGACTGTTGAGGTGACAGATGTGAACGAGCCTCCTCAGTTCGAAGGCATCCTGGCACAAGTTTAA  
 AACCTCTATGTATAGAAAGAACAACCTGGATTCATTTACCAGGTGGAGGCATTTGACCCAGAAGACA  
 CAAGCCGGAGCATACCCCTCGGGTATTTCTCATTCTCCCTCGAAGAACTTCAGATGTCTGCAATGG  
 CACCCTCTTCTACCACAGAAGTGGACTTTGAAGCAGGGCACAAGAGCTTCAACCTCCTGTGGGAGTA  
 AGAGACAGTGGGAACCTCGAAGCCTCCACAGCTCTCCAGGTGACTATTGTGAACATCAATGATGAGACCC  
 CGCGCTTACCAGCCCCAGGAGGTGACTCTGTCCCAGAAAGTGCCTCTAGGAACCATGGTGGCGAA  
 CATCACAGCAATGGATCCTGATGATGAGGGTTTTCTGGCCGCTCCTCTACAGCATCACTACCACCAGC  
 AGCTATTTTCATGGTAGACCAGCTGACAGGGACAATCCAAGTGGCCGAAGGCTAGATCGAGATGCAGGCG  
 AACTGAGACAGAAATCCCATCTTCTGGAAGTTCGAGTGAGAGACAGGCCCTCTGGGGTTCAGGAGAA  
 CCGCATGCAGATAACCTTCATTTGGAAGACATCAATGACAACCTGCAACATGCAGAAAGCTCACTTTC  
 AGCATTATGTTGCCTGAAAGAACAGCCAACGGGACGTTGCTTTGGACCTGAACAAGTTCGTCTTGATG  
 ATGACAGCGAAGCTCAAACAACAAATCAACTTTACCACGCCATCTGGAGCGGGGAGCAGCCCGCATTT  
 TTCACAGCATCCAGCTGGCTCTGGGAGAATTGTGTTGACTGGTGTCTAGACTATGAAAAATCCAAGCAAC  
 CTGACAGTTGGCAATGTGTACAATGTGATGATCCAAGTGCAGGATGCTGCTCCTCATACTACAAAAAAA  
 GCATCTACATCTATCCTAACAAAGGCCAGAAAAATGAATTTCTCTCATCTTTGAAAGGCCATCGTACGT  
 GTTTGATGTGCCAGAAAGAAGACCAGCTAGAACCAGATTGGGCAGGTGCGAGCTACCGATGCAGACTTC  
 CCCCAGCTCCAGTGGTGTATTCGATCCAGAGGAGGGTCCAGCCTCCAGTACCCAAACATATTTTGGAA  
 TTAACCCCAAGACAGGAGAACTCCAATAAATACTCAAGCAGACCATGAAACCATTCTGTCTACATTCT  
 CACCGTCGAGGCCACCAACGGCGAGGACAGGAGCTCAGTCACTGTTACTGTGAACATCCTGGAGAAAAAT  
 GATGAAAAGCCAGTATGTACTCCAAATTTTACTTCATGGCCATCCAGTGGATCTAAAAGTTGGCACAA  
 ACATTCAGAATTTCAAGCTGACGTGACCTGACCTTGATTCAGCCCAAGTTCTTTTCGATACTCCATTGG  
 CTCAGGCAACATCAACAATCATTTCACCTTCTCTCCAATGCCGGCTCCAACATCACGCGCTGCTGCTG  
 GCTTCCCGCTTTGACTACAGCAGCCTCGATACCGTCTGGGACTACCAGCTGCTTGTCCACATTAAGTATG  
 ACAACTTGTCTGCTGGCAGCACAAAAGCCAAGGCTCTTGTGAAACAGGGACAGTACTCTGAGTGTAA  
 AGTCATTCCTCACCAACCACAACCATCACAACCTCCAGGCCAGGATTACCTACCAGATCCGCAGGGAA  
 AACGTGTACTCCACATCTGCATGGTATGTGCCGTTTCATCGTCACTCTGGGATCCATACTTCTTCTGGCC  
 TTCTGGGGTCCCTGATGGTGTGCTGTCCAAAGCAGTCTACAGACATTGCTCCTTACGACCAGGAGGGA  
 CAGGAAACCTCTGACAAAGAAAAGAGACACAAAAGAATGAATAGAGAGGCCATGGTGGAACTATCCAG  
 ATGAACTCTGTCTTTGATGGAGAAGCCGTAGATCCAGTGACCGGGGAAATATATGAATTCAACTCAAAA  
 CTGGTGCCAGGAGGTGGAAGGCCATTAAACCAGCTGCCGAATTGGCCGAGCCAGTACCCAGCACAG  
 AGGCACAGCTGGAGAAGCACCAGTCCCTAAACACACAGGGAGA

**ACGCGT**ACGCGGCCGCTCGAGCAGAACTCATCTCAGAAGAGGATCTGGCAGCAATGATATCCTGGATT  
 ACAAGGATGACGACGATAAGGTTTAA

**Protein Sequence:** >MR224131 representing NM\_001024478  
Red=Cloning site Green=Tags(s)

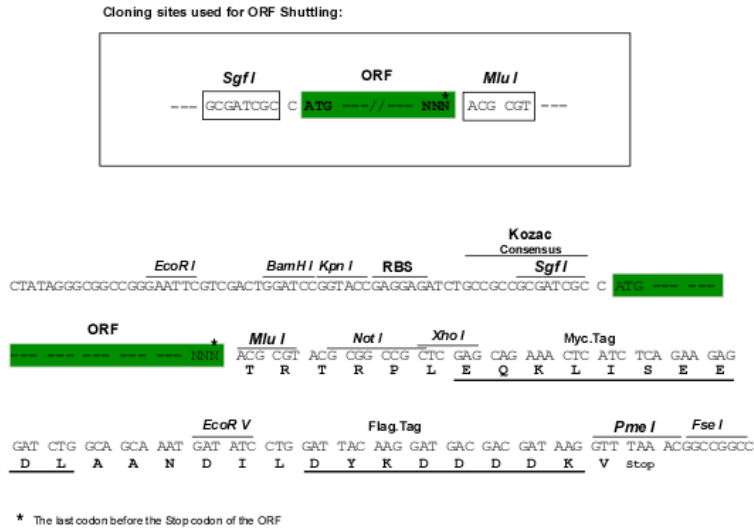
MQGAVIVLVVFGITSGGEALHLLHLPATSNVAENAPPATLVHKFSVNLVSVLSPVIPGFPLVVNPRPFTE  
AFRVNRLSATNFEVVTGKEQLDFERGPKAFDLQIYVKDDVGVTDVQVLTQVTDVNEPPQFQGILAQGL  
NLYVIERTNPGFIYQVEAFDPEDTSRSIPLGYFLISPSKNFRMSANGTLFSTTELDFAAGHKSFNLLVGV  
RDSGNLEASTALQVTIVNINDETPRFTSPRRVYSVPEEVPLGTMVANITAMDPDDEGFPGRLLYSITTTT  
SYFMVDQLTGTIQVARRLDRDAGELRQNPISLEVRVRDRPSGGQENRMQITFIVEDINDNPATCRKLT  
SIMLPERTANGTLLLDLNKFCFDDSEAPNNKFNFPTPSGAGSSRRFSQHPAGSGRIVLTGDLDYENPSN  
LAVGNVYVMIQVQDAAPPYKKSIIYISILTRPENEFLIFERPSYVFDVPERRPARTQIGQVRATDADF  
PRTPVVYVSVRGGSSLQYPNIFWINPKTGELQLITQADHETTSVYILTVEATNGEDRSSVTVTNVLGEN  
DEKPVCTPNFYFMAIPVDLKVGTNIQNFKLTCTDLSSPSSFRYSIGSGNINNHFTFSPNAGSNITRLLL  
ASRFDYSSLDTVWDYQLLVHITDDNLLSGSTKAKALVETGTVTLVKVIPHPTTTITTPRPRITYQIRRE  
NVYSTSAWYVPFIVTLGSILLGLLGLSMVLLSKAVYRHCSTTRDRKPLTKKRDTKRMNREAMVESIQ  
MNSVFDGEAVDPVTGEIYEFNSKTGARRWKGPLTQLPNWPEPSTQHRGTAGEAPVPKHTGR

TRTRPLEQKLISEEDLAANDILDYKDDDDKV

**Chromatograms:** [https://cdn.origene.com/chromatograms/mm9012\\_h07.zip](https://cdn.origene.com/chromatograms/mm9012_h07.zip)

**Restriction Sites:** Sgfl-Mlul

**Cloning Scheme:**



**ACCN:** NM\_001024478

**ORF Size:** 2493 bp

**OTI Disclaimer:** The molecular sequence of this clone aligns with the gene accession number as a point of reference only. However, individual transcript sequences of the same gene can differ through naturally occurring variations (e.g. polymorphisms), each with its own valid existence. This clone is substantially in agreement with the reference, but a complete review of all prevailing variants is recommended prior to use. [More info](#)

**OTI Annotation:** This clone was engineered to express the complete ORF with an expression tag. Expression varies depending on the nature of the gene.

**Components:** The ORF clone is ion-exchange column purified and shipped in a 2D barcoded Matrix tube containing 10ug of transfection-ready, dried plasmid DNA (reconstitute with 100 ul of water).

**Reconstitution Method:**

1. Centrifuge at 5,000xg for 5min.
2. Carefully open the tube and add 100ul of sterile water to dissolve the DNA.
3. Close the tube and incubate for 10 minutes at room temperature.
4. Briefly vortex the tube and then do a quick spin (less than 5000xg) to concentrate the liquid at the bottom.
5. Store the suspended plasmid at -20°C. The DNA is stable for at least one year from date of shipping when stored at -20°C.

**RefSeq:** [NM\\_001024478.1](#), [NP\\_001019649.1](#)

**RefSeq Size:** 2953 bp

**RefSeq ORF:** 2496 bp

**Locus ID:** 68764

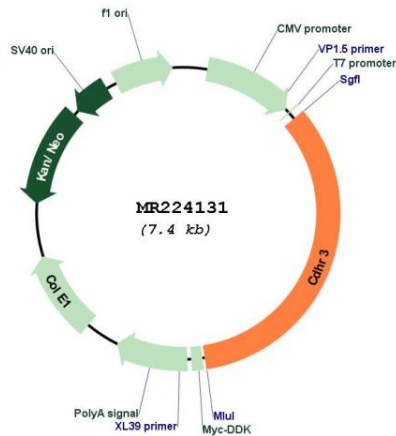
**UniProt ID:** [Q8BL00](#)

**Cytogenetics:** 12 A3

**MW:** 92.5 kDa

**Gene Summary:** Cadherins are calcium-dependent cell adhesion proteins. They preferentially interact with themselves in a homophilic manner in connecting cells; cadherins may thus contribute to the sorting of heterogeneous cell types.[UniProtKB/Swiss-Prot Function]

### Product images:



Circular map for MR224131