

## Product datasheet for **MR224110**

### **Malt1 (NM\_172833) Mouse Tagged ORF Clone**

#### **Product data:**

Product Type:	Expression Plasmids
Product Name:	Malt1 (NM_172833) Mouse Tagged ORF Clone
Tag:	Myc-DDK
Symbol:	Malt1
Synonyms:	A630046N12; D430033E09Rik; Pcaspl
Mammalian Cell Selection:	Neomycin
Vector:	pCMV6-Entry (PS100001)
E. coli Selection:	Kanamycin (25 ug/mL)



[View online »](#)

**ORF Nucleotide Sequence:**

>MR224110 representing NM\_172833  
 Red=Cloning site Blue=ORF Green=Tags(s)

TTTTGTAATACGACTCACTATAGGGCGGCCGGGAATTCGTCGACTGGATCCGGTACCGAGGAGATCTGCC  
 GCC**CGCATCGCC**

ATGTCGCTGTGGGGCAGCCGCTGCAGGCCTCACCTCCCTGGCCGTGCGGCAGCCCCCTACCGCGTCT  
 CGGGACCTTCGACTCCCTCCAGCCGGCGCAACCCTCAACCGCTGCCGAGCCGCTGCTGCGGAGGCT  
 CAGCGAGAGCTTGACCGCCTCCGAGGGCCGGGCTGCGGCAGCTGGCCGAGCTGGCCGGCAGTCGG  
 GGACGCCTCCGGCTCAGTGGCCTGGACCTGGAACAGTGTCTCTTAAAGTATTGGAGCCAGAGGGAAGCC  
 CAAGTTTGTGTTATTGAACTAATGGGTGAAAAAGGATGTACAGTACAGAACTGAGCGACTTCTTACA  
 GGCTTTGGAGCACACTGAGGTTCTCCGCTTCTCAACCCCGAGGATTAAAGATCACTGTAACCCAGAA  
 TCCAAGGCAGTGTGGCTGGACAGTTTGTAAACTGTGCTGCCGGCACTGGACATCTTTTGTACAAT  
 ATCAATGGTTCAAATGAATAAAGAGATCCCATATGGAATTCATCAGAAGTGTGTTTTAACACAGTGCA  
 TGTAAGATGCAGGCTTTATGTCTGCCGGTTAACAACAGTCCACTTTTGAATTTAGCCAGTGGTCA  
 CAGCTGGATGTGTGTATGTGGCAGAAGTAACAGACAGCTCCAGGGAAGTATGGATGGCATCTCAGAAT  
 CCAGGTTGCAATCTGTGTTGAACCAAGGTCCAAAGGCTGGTGCCAGGCAGCATGTTGTTGTACAGTG  
 GTTTGCTATTGGAAGTCTATGCCTCACTACCAGTGGTTAAAGATGAATCACCATTAACACATGAGACA  
 AAAAAGCACTACACGGTTCATATGTGGATATAGAACAAGGAAGCACTACTGGTGTATGTATATAATG  
 ACCGAGACAGTCAAGATAGCAAGAAGGCAGAAGTACCATAGATGAATTAACAATTTGGGGCATCTGTA  
 TAATAAAGAACTGGCCAGCCTTTGGCAAAGGACAAAGTCCGCTTTTGGATAGGGAATATGATTAC  
 TGGGAGCATCCCAAGCTTAAAGCGCTTTGGTGGATGTGTATGAATTGACCAACTACTAAGACAAGT  
 ATTTCAAAGTGTCTCACTGTTGGACTTACTGAATATGAGATGTGTAACGCTGTGGATGAATTTTACT  
 ACTTTTAGACAAAAGGAGTATATGGATTATATATATGACAGGGCACGGTTATGAAAACCTTTGAAAACAGT  
 TTCATGGTCCCTGTTGATGCTCCAAATCCATATAGGTCTGAAAATTGCCTATGCGTACAAAAACTACTGA  
 AATTAATGCAAGAAAAGGAGACTGGCCTGAATGTTCCTGTTGGATATGTGCGAAAAGAAAATGACTA  
 CGATGATACCATCCAATCTGGACGCACTGAAAGTCACTGCCAACATTGTGTTGGATATGCCACGTGC  
 CAAGGAGCAGAAGCCTTTGAAATCCAGCATTCTGGGTTGGCAAATGGGATTTTTATGAAATTTTTAAAG  
 ATAGATTATTAGAAGACAAGAAAATTACTGTGTTACTGGATGAAGTTCAGAAGATATGGGTAATGTCA  
 CCTTACCAAAGGCAGACAAGCTTAGAGATTCGACGAGCTTGTCTGAAAAGAGAGCACTACTGATCCA  
 GTCCAGGAGCACCTTGTCTGCAGAGGCTCTGGTGCGAATCTACAGTGGCCAAAGGCTCATGAACTTC  
 CAGAAAGTATGTCCCTAAATTTCAAGTGTGGCGTTCACATTCAATTAGGATTTGCCGAGAGTCTCCAA  
 TGTCATGATAATCTACACAAGTATAGTCCACAAACCACCTGAGATAATAATGTGTGACGCCTATGTTACT  
 GATTTCCCTCTTGACCTAGATATTGATCCAAAACATGCAAAACAAGGGGACTCCTGAAGAACTGGCAGCT  
 ACTTAGTATCAAAAGACCTTCCCAAGCACTGCCTCTACACTAGACTCAGCTCACTACAAAATTAAGGA  
 ACATCTGATCTTCACAGTCTGTCTGTCTATCAGTATTCAGGACTAGAAGCACTGTGGAGGAGAAGCAG  
 GAGGTGAACGTGGGAAGCCTCTATTGCCAAGCTAGACATGCACCGAGGACTGGCAGGAAGACTTGT  
 TCCAAGCTTGTGATGCCTGACGAGCCGTACCACAGCTCCACATCTACCTCAGCGGGAGCGGGCATT  
 CCATTCCTCTCAGGACTCATTCCATGATGTGTACCATTACATCTTGGCAATGCAGACAGTGGTATGCCA  
 CCAGACAGGTGTATTGCAGCCGACTCCACACACATTCAATTTCAAATTAATCCCCCACCCTACTGCC  
 AGTTTGGTAGAAGTAAATGTGCCGTAGAGACAAGTATGAAATGCCATTAGTTTTCTGACAGGCTTAT  
 GATTTCTGAAAAC

**ACGCGT**ACGCGGCCGCTCGAGCAGAACTCATCTCAGAAGAGGATCTGGCAGCAATGATATCTGGATT  
 ACAAGGATGACGACGATAAGGTTTAA

**Protein Sequence:** >MR224110 representing NM\_172833  
Red=Cloning site Green=Tags(s)

MSLWGQPLQASPLAVRQPPTASSGPSTSPAGATLNRLPELLRRLSESLDRAPEGRGWRQLAELAGSR  
GRLRLSGLDLEQCSLKVLEPEGSPSLCLLKLMEKGCVTVELSDFLQALEHTEVLP LLNPPGLKITVNPE  
SKAVLAGQFVKLCCRATGHPFVQYQWFKMNKEIPYGNSSSELVFNTVHVKDAGFYVCRVNSSTFEFSQWS  
QLDVCDVAEVTDSFQGSMDGISESRLQICVEPRSQRLVPGSM LLLQCVAIGSPMPHYQWFKDESPLTHET  
KKHYTVPYVDIEHEGTYWCHVYNDRDSQSKAEVTIDELNNLGHPDNKEQTGQPLAKDKVALLIGNMSY  
WEHPKLLKAPLVDVYELTNLLRQLDFKVVSLDLTEYEMCNAVDEFLLLLDKGVYGLLYYAGHGYENFGNS  
FMVPVDAPNPYRSENCLCVQNILKLMQEKETGLNVFLDMCRKRNDYDDTIPILDALKVTANIVFGYATC  
QGAEAFEIQHSLANGIFMKFLKDRLLEDKKITVLLDEVAEDMGKCHLTKGRQALEIRSSLSEKRAL TDP  
VQGAPCSAEALVRNLQWAKAHELPEMCLKFQCGVHIQLGFAAEFSNMIIYTSIVHKPPEIIMCDAYVT  
DFPLDLIDPKHANKGTPEETGSYLVSKDLPKHCLYTRLSSLQKLKEHLIFTVCLSYQYSGLEDTVEEKQ  
EVNVGKPLIAKLDMHRGLGRKTCFQACRMPDEPYHSSTSTAGAGHFHSSQDSFHDVYHSHLGNADSGMP  
PDRCHCSRTPHTFISNYPPHYCQFGRSNVPVETTDMPF SFSDRLMISEN

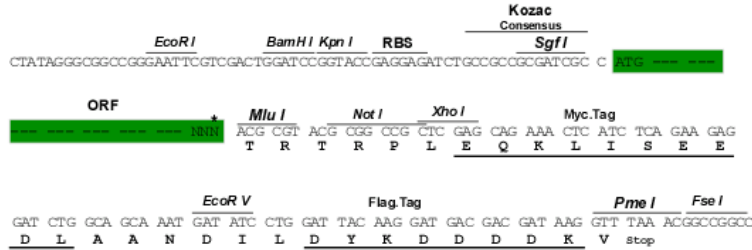
TRTRPLEQKLISEEDLAANDILDYKDDDDKV

**Chromatograms:** [https://cdn.origene.com/chromatograms/mm9033\\_d05.zip](https://cdn.origene.com/chromatograms/mm9033_d05.zip)

**Restriction Sites:** Sgfl-Mlul

**Cloning Scheme:**

Cloning sites used for ORF Shuttling:



\* The last codon before the Stop codon of the ORF

**ACCN:** NM\_172833

**ORF Size:** 2463 bp

**OTI Disclaimer:** The molecular sequence of this clone aligns with the gene accession number as a point of reference only. However, individual transcript sequences of the same gene can differ through naturally occurring variations (e.g. polymorphisms), each with its own valid existence. This clone is substantially in agreement with the reference, but a complete review of all prevailing variants is recommended prior to use. [More info](#)
**OTI Annotation:** This clone was engineered to express the complete ORF with an expression tag. Expression varies depending on the nature of the gene.

**Components:** The ORF clone is ion-exchange column purified and shipped in a 2D barcoded Matrix tube containing 10ug of transfection-ready, dried plasmid DNA (reconstitute with 100 ul of water).

**Reconstitution Method:**

1. Centrifuge at 5,000xg for 5min.
2. Carefully open the tube and add 100ul of sterile water to dissolve the DNA.
3. Close the tube and incubate for 10 minutes at room temperature.
4. Briefly vortex the tube and then do a quick spin (less than 5000xg) to concentrate the liquid at the bottom.
5. Store the suspended plasmid at -20°C. The DNA is stable for at least one year from date of shipping when stored at -20°C.

**RefSeq:** [NM\\_172833.3](#)

**RefSeq Size:** 5008 bp

**RefSeq ORF:** 2466 bp

**Locus ID:** 240354

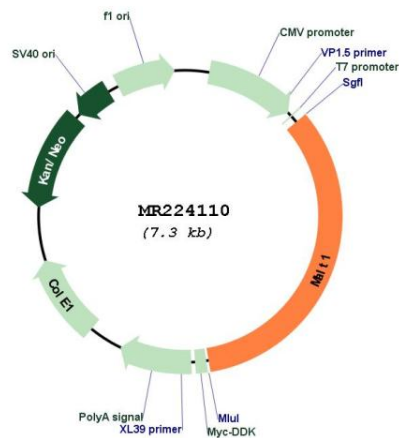
**UniProt ID:** [Q2TBA3](#)

**Cytogenetics:** 18 E1

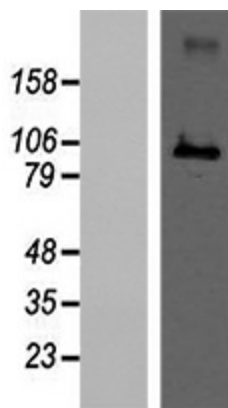
**MW:** 92.5 kDa

**Gene Summary:** Enhances BCL10-induced activation of NF-kappa-B. Involved in nuclear export of BCL10. Binds to TRAF6, inducing TRAF6 oligomerization and activation of its ligase activity. Has ubiquitin ligase activity (By similarity). MALT1-dependent BCL10 cleavage plays an important role in T-cell antigen receptor-induced integrin adhesion (By similarity). Involved in the induction of T helper 17 cells (Th17) differentiation. Cleaves RC3H1 and ZC3H12A in response to T-cell receptor (TCR) stimulation which releases their cooperatively repressed targets to promote Th17 cell differentiation (PubMed:25282160).[UniProtKB/Swiss-Prot Function]

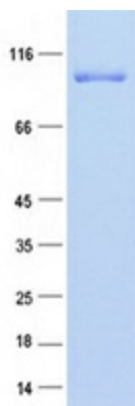
### Product images:



Circular map for MR224110



Western validation with an anti-DDK antibody; L: Control HEK293 lysate R: Over-expression lysate



Coomassie blue staining of purified Malt1 protein (Cat# [TP524110]). The protein was produced from HEK293T cells transfected with Malt1 cDNA clone (Cat# MR224110) using MegaTran 2.0 (Cat# [TT210002]).