

## Product datasheet for MR224082

### Ypel1 (NM\_023249) Mouse Tagged ORF Clone

#### Product data:

Product Type:	Expression Plasmids
Product Name:	Ypel1 (NM_023249) Mouse Tagged ORF Clone
Tag:	Myc-DDK
Symbol:	Ypel1
Synonyms:	0610009L05Rik; 1700016N17Rik; 1700019O22Rik; 4921520K19Rik; 4930511F14Rik; AV118478
Mammalian Cell Selection:	Neomycin
Vector:	pCMV6-Entry (PS100001)
E. coli Selection:	Kanamycin (25 ug/mL)
ORF Nucleotide Sequence:	>MR224082 representing NM_023249 Red=Cloning site Blue=ORF Green=Tags(s)

TTTTGTAATACGACTCACTATAGGGCGGCCGGAATTCGTCGACTGGATCCGGTACCGAGGAGATCTGCC  
GCC**CGATCGCC**

ATGGTGAAAATGACCAAGTCCAAAACCTTCCAAGCTTATCTGCCACACTGTCACCGAACTTACAGCTGCA  
TCCACTGCAGAGCCCATCTGGCCAATCACGATGAGCTTATCTCCAAGTCCTTTCAGGGAAGCCAGGGGCG  
AGCCTACCTCTTCAACTCTGTGGTGAATGTGGGCTGTGGCCCCGCTGAGGAGAGAGTCTTCTAACCGG  
CTGCATGCAGTGGCCGACATCTACTGTGAGAACTGCAAGACCACACTCGGGTGGAAATACGAACATGCCT  
TTGAGAGCAGTCAGAAATACAAGGAAGGAAAATTTATTATTGAACTTGCCACATGATCAAAGACAACGG  
CTGG

**ACGCGT**ACGCGGCCGCTCGAGCAGAAACTCATCTCAGAAGAGGATCTGGCAGCAAATGATATCCTGGATT  
ACAAGGATGACGACGATAAGGTTTAA

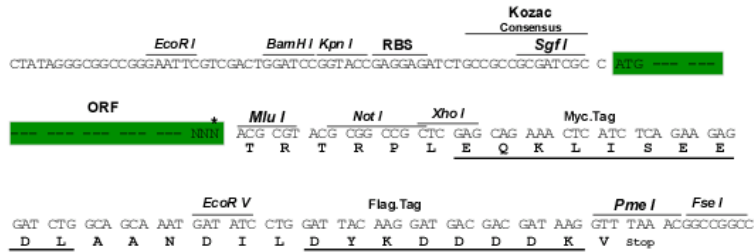
Protein Sequence:	>MR224082 representing NM_023249 Red=Cloning site Green=Tags(s)
	MVKMTKSKTFQAYLPHCHRTYSCIHCRAHLANHDELISKSFQGSQGRAYLFNSVNVVCGCPAEERVLLTG LHAVADIYCENCKTTLGWKYEAFESSQKYKEGKFIEELAHMIKDNWG
	<b>TR</b> TRPLEQKLISEEDLAANDILDYKDDDDKV
Restriction Sites:	Sgfl-MluI



[View online »](#)

**Cloning Scheme:**

Cloning sites used for ORF Shutting:



\* The last codon before the Stop codon of the ORF

**ACCN:** NM\_023249

**ORF Size:** 354 bp

**OTI Disclaimer:** The molecular sequence of this clone aligns with the gene accession number as a point of reference only. However, individual transcript sequences of the same gene can differ through naturally occurring variations (e.g. polymorphisms), each with its own valid existence. This clone is substantially in agreement with the reference, but a complete review of all prevailing variants is recommended prior to use. [More info](#)

**OTI Annotation:** This clone was engineered to express the complete ORF with an expression tag. Expression varies depending on the nature of the gene.

**Components:** The ORF clone is ion-exchange column purified and shipped in a 2D barcoded Matrix tube containing 10ug of transfection-ready, dried plasmid DNA (reconstitute with 100 ul of water).

**Reconstitution Method:**

1. Centrifuge at 5,000xg for 5min.
2. Carefully open the tube and add 100ul of sterile water to dissolve the DNA.
3. Close the tube and incubate for 10 minutes at room temperature.
4. Briefly vortex the tube and then do a quick spin (less than 5000xg) to concentrate the liquid at the bottom.
5. Store the suspended plasmid at -20°C. The DNA is stable for at least one year from date of shipping when stored at -20°C.

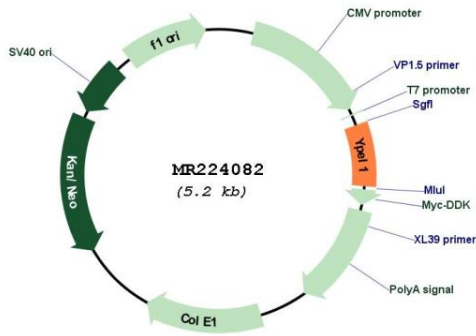
**RefSeq:** [NM\\_023249.6](#), [NP\\_075738.1](#)
**RefSeq Size:** 2659 bp

**RefSeq ORF:** 357 bp

**Locus ID:** 106369

UniProt ID: [Q9ESC7](#)  
 Cytogenetics: 16 A3  
 MW: 13.9 kDa  
 Gene Summary: May play a role in epithelioid conversion of fibroblasts.[UniProtKB/Swiss-Prot Function]

**Product images:**



Circular map for MR224082