

Product datasheet for MR224047

Mrpl16 (NM_025606) Mouse Tagged ORF Clone

Product data:

Product Type: Expression Plasmids
 Product Name: Mrpl16 (NM_025606) Mouse Tagged ORF Clone
 Tag: Myc-DDK
 Symbol: Mrpl16
 Synonyms: 2310039D06Rik
 Mammalian Cell Selection: Neomycin
 Vector: pCMV6-Entry (PS100001)
 E. coli Selection: Kanamycin (25 ug/mL)
 ORF Nucleotide Sequence: >MR224047 representing NM_025606
 Red=Cloning site Blue=ORF Green=Tags(s)

TTTTGTAATACGACTCACTATAGGGCGGCCGGAATTCGTCGACTGGATCCGGTACCGAGGAGATCTGCC
 GCCCGATCGCC

ATGTGGAGGCTGTTGACGCGCTCCCCGCGCCGCTCCTGCGGATGCACTTTTCAGATTCTTGGGCAGCCC
 TTCCCACAGTGCTGGTCTGAAGACGCTCCTCCAGTTCCAACCTTTGAAAATGTCTCCATCCCTGAAAG
 GTCCAAGCTTAAATTTGTTGAAAGAGTCCCACTTGTCACAAAAGTAAGAAGAGAACCTAAAAATTTGAAG
 GACATACGAGGGCCTTCAACTGAAGCCACTGACTTTACAGAAGGCAATTTTGAATTTTGGCACTTGCCG
 GTGGTTATCTCCATTGGGGCCATTTTGAATGATGCGCTTGACAATCAACCGCTTTATGGATCCCAAGAA
 CATGTTTGCCATCTGGCGAGTGCCAGCCCTTTCAAGCCCATCACTCGCAAAGGTGTTGGCAGCGCATG
 GGGGGAGGTAAAGGTGCCATCGATCACTATGTGACACCTGTGAAGACTGGCTGCCTAGTAGTAGAGATGG
 GTGGACGGTGTGAATTTGAAGAGGTAAAAGGTATCCTGAACCAAGTTGCTCACAAGTTACCCTTTCCGGC
 AAAGGCTGTGAGCCGTAAGACTCTAGAGAGGATGCACCAAAATCAAAGAGAGAGAGAACTTAACAACCA
 AACCCCTGGACCTTTGAGCACATAGCCACTGCCAACATGTTTGGCATACGGAAATTCCTGAGCCCATATG
 ACTTGACGCAGAAAGGGCGATACTGGGGCAAATCTACATGCCCAAGCGTGTG

ACGCGTACGCGGCCGCTCGAGCAGAAACTCATCTCAGAAGAGGATCTGGCAGCAAATGATATCCTGGATT
 ACAAGGATGACGACGATAAGGTTTAA



[View online »](#)

Protein Sequence: >MR224047 representing NM_025606
Red=Cloning site Green=Tags(s)

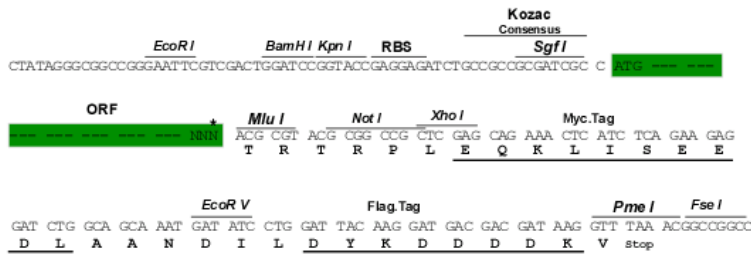
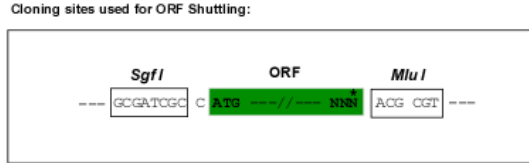
MWRLLTRVPAPLLRMHFSWSAALPTSAGLKTLLPVPTFENVSIPEPSKLFVERVPLVPKVRREPKNLK
 DIRGPSTEATDFTEGNFAILALGGYLHWGHFEMMRLTINRFMDPKNMF AIWRVPAPFKPI TRKGVGQRM
 GGGKGAIDHYVTPVKTGCLLVEMGGRCEFEVKGILNQVAHKLPFPAKAVSRKTLERMHQNRERELNNQ
 NPWTFEHIATANMFGIRKFLSPYDLTQKGRYWGFYMPKRV

TRTRPLEQKLISEEDLAANDILDYKDDDDKV

Chromatograms: https://cdn.origene.com/chromatograms/mm9062_e12.zip

Restriction Sites: SgfI-MluI

Cloning Scheme:



* The last codon before the Stop codon of the ORF

ACCN: NM_025606

ORF Size: 753 bp

OTI Disclaimer: The molecular sequence of this clone aligns with the gene accession number as a point of reference only. However, individual transcript sequences of the same gene can differ through naturally occurring variations (e.g. polymorphisms), each with its own valid existence. This clone is substantially in agreement with the reference, but a complete review of all prevailing variants is recommended prior to use. [More info](#)

OTI Annotation: This clone was engineered to express the complete ORF with an expression tag. Expression varies depending on the nature of the gene.

Components: The ORF clone is ion-exchange column purified and shipped in a 2D barcoded Matrix tube containing 10ug of transfection-ready, dried plasmid DNA (reconstitute with 100 ul of water).

Reconstitution Method:

1. Centrifuge at 5,000xg for 5min.
2. Carefully open the tube and add 100ul of sterile water to dissolve the DNA.
3. Close the tube and incubate for 10 minutes at room temperature.
4. Briefly vortex the tube and then do a quick spin (less than 5000xg) to concentrate the liquid at the bottom.
5. Store the suspended plasmid at -20°C. The DNA is stable for at least one year from date of shipping when stored at -20°C.

RefSeq: [NM_025606.3](#), [NP_079882.2](#)

RefSeq Size: 1134 bp

RefSeq ORF: 756 bp

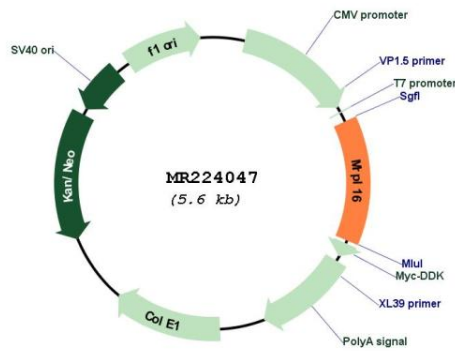
Locus ID: 94063

UniProt ID: [Q99N93](#)

Cytogenetics: 19 A

MW: 28.8 kDa

Product images:



Circular map for MR224047