

Product datasheet for MR224025

Trps1 (NM_032000) Mouse Tagged ORF Clone

Product data:

Product Type:	Expression Plasmids
Product Name:	Trps1 (NM_032000) Mouse Tagged ORF Clone
Tag:	Myc-DDK
Symbol:	Trps1
Synonyms:	A1115454; A1447310; D15ErtD586e
Mammalian Cell Selection:	Neomycin
Vector:	pCMV6-Entry (PS100001)
E. coli Selection:	Kanamycin (25 ug/mL)
ORF Nucleotide Sequence:	>MR224025 ORF sequence Red=Cloning site Blue=ORF Green=Tags(s)

TTTTGTAATACGACTCACTATAGGGCGGCCGGAATTCGTCGACTGGATCCGGTACCGAGGAGATCTGCC
GCC**CGATCGC**C

ATGGTCCGGAAAAAGAACCCCCCTGAGAAACGTTGCTAGTGAAGGCGAGGGTCAAACCCCTGGAGCCAA
CAGCTACAGAGAGCAAGGTATCTGGGAAGAACAAGAATTGTCTGCAGATCAGATGTCAGAAAATACAGA
TCAGAGTGATGTTGCAGAGTTGAACTCGAAGGAGGAACACAGCACGCATGGCCAAGGCCATCTCCAGC
GGTAAGAAGGACTTGCAATCTCAGGCCCTGAGTGAGAAGGCTGGCTTCAATTATGAAAGCCCCAGTAAGG
GAGGGAGCCTTGTCTCCTCCACATGATGAGGTAACAGACAGAAATATGTTGGCTTTCTCATCTCCAGC
TGCTGGGGGAGTCTGCGAGCCCTTGAAGTCTCCTCAAAGAGCAGAGGCAGATGACCCTCAAGATATGGCC
TGACCCCATCAGGGGATTCATTGGAGACAAAGGAAGAGCATAAAATGTCACCAAAGGCCACTGAGGAAA
CAGGGCCAGTGCAGAGTGGTCAAGCCAATTGTCAAGGTTTGTAGTCCAGTTTCCGTGGCCTCAAAAAACC
ACAAGTGCCTTCAGATGGGGGTGTGAGACTGAGTAAACCCAAAGGTGACTTACTGGTGAATGACAACCCA
GACCCGGCACCTCTGTCTCCAGAGCTTCAGGACTTTAAATGCAATATCTGTGGATACGGTACTATGGCA
ATGACCCACAGATCTGATTAAGCACTCCGAAAGTATCACTTAGGACTGCATAATCGCACCAGGCAGGA
TGCTGAGCTGGACAGCAAAATCTTGGCCCTTCAACATGGTGCAGTTCAGCCATTCCAAGACTTCCAG
AAGTCAACCGTTCTGTGCTTTCTGGCGTGTGCAGGATATCAGCTTTCACGGCCTGCTTACTAAATG
GAACCTATGATGTACAGGTCACCTCAGGAGGAACCTTTCATTGGCATTGGACGGAACCTCCAGATTGCCA
AGGCAACACCAAGTATTTCCGCTGCAAATCTGCAATTTCACTTATATGGGAACTCCTCAACTGAACTA
GAGCAACATTTTCTCAGACGCACCCGAATAAAATCAAAGTGTCTCTCCCGTCTCCGAGGGTGTGGAAC
CGTCAGAGAAAACTCTAACAAATCCATCCCTGCGCTTCGAGCCAGTGACTCTGGGGATGTGGGAAAGTG
GCAGGACAAAAATGACAGTCAAAGCTGGAGATGACACCCCTGTGCGCTACTCAGTGCCCATCAAGCCCTC
GATTCCTCAGACAAAAATGGTACAGAGGCCACCAGTTATTAAGTGGTAAATTTGTAGTTTCAGCTGTG
AGTCATCCAGCTCCCTTAAGCTGCTAGAACATTATGGCAAGCAGCACGGAGCAGTGCAGTCGGGCGCCCT
TAATCCAGAGTTGAATGACAAGCTTCCAGGGGCTCTGTCATTAATCAGAATGATCTAGCCAAAAGTGA



[View online »](#)

GAAGGAGAGCCATTGACCAAGCCAGAAAAGGGCTTGAGTGGGGCTAAAAAGAAGGACTTCCCCAGCAAGG
GAGCAGAGGATAATATGGTAACGAGCTATAACTGTGAGTTCTGTGACTTTAGATATTCAAAAAGCCATGG
CCCTGATGTGATTGTAGTGGGTCCACTTCTCCGTCATTATCAGCAACTCCATAACATCCACAAGTGACC
ATTAAGCACTGTCCATTCTGTCCAGAGGCCTTTCAGCCAGAAAAGCACCTTGGAGAGATTACTTATC
CGTTTGCTTGTAGAAAAAGTAATTGTTCCCACTGTGACTGTTGCTGTTGCACTGTCTCCTGGGGTGGC
CGGAAGTTCGAGAGTCAAACACCAATGCCACCAGTGTTCCTTCTACCCCGATGTAGATGTGCTCCTC
TTCACTATGAGACCGTGCATGAGTCCCAAGCATCGGATGTCAAACAGGAGGCCAACCCACTGCTAGGAT
CTGACGGGCAGCAGGCTGTCAGGGACAGCAAGGAGCACTCGTGCACCAAATGCGATTTTATAACCCAGGT
GGAAGAAGAGATCTCGAGACACTACAGGAGAGCACACAGCTGCTATAAATGTCGTCAGTGCAGTTTCACA
GCTGCTGACACTCAGTCACTATTGGAGCACTTCAACACAGTTCAGTCCAGGAACAGGAAATCACTACTG
CTAATGGCGAAGAGGGTGGCCATGCCATACCCACCATCAAAGAAGAGCCAAAAATTGACCTCAAGGTCTA
CAGTCTGTAAACCCAGACTCTAAAATGGGAGAAAACAGTCCCGAGAGCATAGTCAAGAGAGAGAAAATT
GATGACAAAGGAAGGGCTGAAAGATAAAAATCTGGACTGAGAGTTCAACTGATGACCTTCGTGGTGTGGCTT
GGAGAGGGGCAGACATCCTACGGGGTAGTCCATCTACACTCAAGCAAGCTTAGGGCTCTTGACGCCTGT
GTCAGCTCCCAAGAGCAGACAAAGACTCTGAGGGACAGCCCAATGTTGAAGCTGCCACCTGGCACGA
CCTATGTATGGCTTGGCAGTAGATACCAAGGGCTTCTGCAAGGGGCTCCTGCTGGCAGCGAGAAGTCTG
CATCTCTTACCCAGCAGTATCCTGCCTCCGGAGAGAGCAAGACCAAGGATGAATCCCACTCGCTGTTACG
GAGGCGAAGAGGATCTGGTGTGTTTTGTGCCAATTGCCTGACCACAAAGACCTCTCTCTGGCGAAAGAAT
GCAAAATGGCGGATATGTATGCAATGCATGTGGTCTCTACCAGAACTTCACTCGACTCCCAGGCCTTTAA
ACATCATTAAACAAAACAACGGCGAGCAGATTATTAGAAGACGGACAAGAAAAGCGCCTTAACCCAGAGGC
ACTTCAGGCTGAGCAGCTCAACAAACAGCAGAGGGGAAGTGGGGAGGAGCAGGTCAATGGAAGCCCTTA
GAGAGGAGGTGAGAAGATCACTTAAGTAAAAGTCCAGAGAGAAATCCACTCCGAGCCTGAGTAAAT
ACGAAGCCAGGGTTCATTGACTAAAAGCCATTCTGCTCAGCAGCCAGTCTGGTCAGCCAAGCTCTGGA
TATCCACAAAAGGATGCAGCCTTTGCACATTCAGATAAAAAGTCCCTCAGGAAAAGTACTGGAGATCCAGGA
AATAGTTCATCCGTATCTGATGGGAAAAGGAAAGTCTGAAAAGAGGAGCCCATCGAAAAGTACATGAGAC
CTGCAAAACACCCCAACTATTCTCCACCAGGCAGCCCATCGAAAAGTACCAATACCCGCTTTTTGGAGT
TCCTTTTGTACATAATGACTTCCAGAGTGAAGCTGATTGGCTACGGTCTGGAGTAAATATAAGCTCTCC
GTTCTGGGAATCCGCACTACTTGAGTCATGTGCCTGGCTTACCAAAATCCTTGCCAAAATATGTGCCTT
ATCCACCTTCAATCTGCCTCCTCATTCTCAGCTGTTGGATCAGACAATGACATTCCTCTAGATTTGGC
GATCAAGCATTCCAGACCTGGGCCAACTGCAAATGGTGCCTCAAGGAGAAAACCAAGGCACCACCAACT
GTAAAAAATGAAGTCCCTTGAATGTAGTTAAGACGGAGAAAGTTGACAGAAGCACTCAAGATGAACCTT
CAACGAAATGTGTGCACTGTGGCATTGTTTTCTGGATGAAGTATGTATGCTTTGCATATGAGTTGCCA
TGGTGACAGTGGACCTTCCAGTGCAGCATATGCCAGCATCTTTCACGGACAAAATATGACTTCACAACA
CATATCCAGAGGGGCTGCATAGGAACAATGCACAAGCAGAAAAAATGGAAAACCTAAAGAG

ACGCGTACGCGGCCGCTCGAGCAGAACTCATCTCAGAAGAGGATCTGGCAGCAAATGATATCCTGGATT
ACAAGGATGACGACGATAAGGTTTAA

Protein Sequence: >MR224025 protein sequence
 Red=Cloning site Green=Tags(s)

MVRKKNPPLRNVASEGEGQTLEPTATESKVSIGNKEL SADQMSENTDQSDVAELNSKEEHSTHGQEPSSS
 GKLDLQISGLSEKAGFNYESPSKGGSLVSFPHDEVTRNMLAFSSPAAGGVCEPLKSPQRAEADDPQDMA
 CTPSGDSLETKEEHKMSPKATEETGVPVQSGQANCQGLSPVSVASKNPQVPSDGGVRLSKPKGDLVNDNP
 DPAPLSPELQDFKCNICGYGYNDPTDLIKHFRKYHLGLHNRTRQDAELDSKILALHNMVQF SHSKDFQ
 KVNRSVL SGVLQDISSSRPALLNGTYDVQVTSGGTFIGIGRKTDCQGNKYFRCKFCNF TYMGNSSTEL
 EQHFLQTHPNKIKVSLPSSSEGEVPESEKNSKSI PALRASDSGDVGKWQDKMTVKAGDDTPVGYSVPKPL
 DSSRQNGTEATSYYWCKFCFSCESSSSLLKLEHYGKQHGA VQSGGLNPELNDKLP RGSVINQNDLAKSV
 EGEPLTKPEKGLSGAKKDFPSKGAEDNMVTSYNCQFCDFRYSKSHGPDVIVVGPLLRHYQQLHNIHKCT
 IKHCPFCPRGLCSPEKHLGEITYPFACRKSNC SHCALLLHLSPGVAGSSRVKHQCHQCSFSTPDVDVLL
 FHYETVHESQASDVKQEAHLLGSDGQAVRDSKEHSCTKCDFITQVEEESRHYRRAHSCYKRCQCSFT
 AADTQSLLEHFN TVHCQEIEITANGEEGHAIPTIKEEPKIDLVYSLNLPDSKMGETVPE SIVKREKL
 DDKEGLKDKIWTESSTDDL RGVAWRGADILRGSPSYTQASLGLLTPVSSSQEQTTLRDSPNVEAAHLAR
 PMYGLAVDTKGLFQGAPAGSEKSASLTQQYPASGESKTKDESQSLLRRRRSGSGVFCANCLT TKTSLWRKN
 ANGGYVNCACGLYQKLHSTPRPLNIKQNNGEQIIRRRTRKRLNPEALQAEQLNKQQRGS GEEQVNGSPL
 ERRSEDLSESHPREIPLPSLSKYEAQGS LTKSHAQQPVLVSQALDIHKRMQPLHIQIKSPQESTGDPG
 NSSSVSDGKGSSEKSPIEKYMRPAKHPNYSPPGSPIEKYQYPLFGVPFVHNDFQSEADWLR FWSKYKLS
 VPGNPHYL SHVPLPNPCQNYVPYPTFNLPPHFSAVGSNDIPLDLAIKHSRPGPTANGASKEKTKAPPT
 VKNEGPLNVVKT EKVDRSTQDELSTKCVHCGIVFLDEV MYALHMSCHGDSGPFQCSICQHLCTDKYDFTT
 HIQRGLHRNNAQAEKNGKPKE

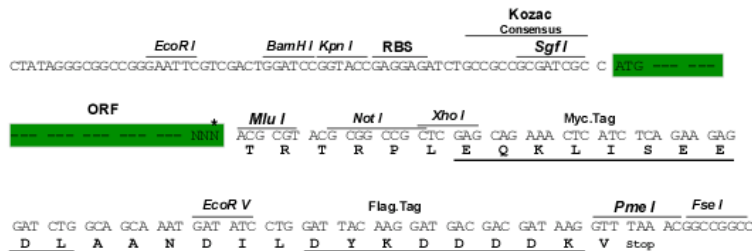
TRTRPLEQKLI SEEDLAANDILDYKDDDDKV

Restriction Sites:

SgfI-MluI

Cloning Scheme:

Cloning sites used for ORF Shuttling:



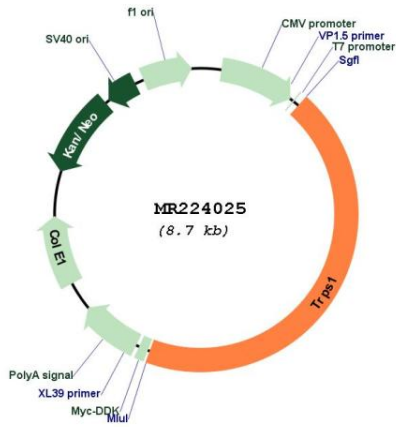
* The last codon before the Stop codon of the ORF

ACCN: NM_032000

ORF Size: 3846 bp

OTI Disclaimer:	<p>Due to the inherent nature of this plasmid, standard methods to replicate additional amounts of DNA in E. coli are highly likely to result in mutations and/or rearrangements. Therefore, OriGene does not guarantee the capability to replicate this plasmid DNA. Additional amounts of DNA can be purchased from OriGene with batch-specific, full-sequence verification at a reduced cost. Please contact our customer care team at custsupport@origene.com or by calling 301.340.3188 option 3 for pricing and delivery.</p> <p>The molecular sequence of this clone aligns with the gene accession number as a point of reference only. However, individual transcript sequences of the same gene can differ through naturally occurring variations (e.g. polymorphisms), each with its own valid existence. This clone is substantially in agreement with the reference, but a complete review of all prevailing variants is recommended prior to use. More info</p>
OTI Annotation:	This clone was engineered to express the complete ORF with an expression tag. Expression varies depending on the nature of the gene.
Components:	The ORF clone is ion-exchange column purified and shipped in a 2D barcoded Matrix tube containing 10ug of transfection-ready, dried plasmid DNA (reconstitute with 100 ul of water).
Reconstitution Method:	<ol style="list-style-type: none"> 1. Centrifuge at 5,000xg for 5min. 2. Carefully open the tube and add 100ul of sterile water to dissolve the DNA. 3. Close the tube and incubate for 10 minutes at room temperature. 4. Briefly vortex the tube and then do a quick spin (less than 5000xg) to concentrate the liquid at the bottom. 5. Store the suspended plasmid at -20°C. The DNA is stable for at least one year from date of shipping when stored at -20°C.
RefSeq:	NM_032000.1 , NM_032000.2 , NP_114389.2
RefSeq Size:	10210 bp
RefSeq ORF:	3846 bp
Locus ID:	83925
Cytogenetics:	15 19.18 cM
MW:	141 kDa

Product images:



Circular map for MR224025