

## Product datasheet for **MR224008**

### **Brd3 (NM\_001113574) Mouse Tagged ORF Clone**

#### **Product data:**

Product Type:	Expression Plasmids
Product Name:	Brd3 (NM_001113574) Mouse Tagged ORF Clone
Tag:	Myc-DDK
Symbol:	Brd3
Synonyms:	2410084F24Rik; AW060456; Fsrg2; ORFX; RINGL3
Mammalian Cell Selection:	Neomycin
Vector:	pCMV6-Entry (PS100001)
E. coli Selection:	Kanamycin (25 ug/mL)



[View online »](#)

**ORF Nucleotide Sequence:**

>MR224008 representing NM\_001113574  
 Red=Cloning site Blue=ORF Green=Tags(s)

TTTTGTAATACGACTCACTATAGGGCGGCCGGGAATTCGTCGACTGGATCCGGTACCGAGGAGATCTGCC  
 GCC**CGGATCGCC**

ATGTCCACTACAGCGGCTGCCCCACGGGGATCCCGGCAGTCCCGGGCCCGTGAACCTCCCCACCTG  
 AGGTCTCCAACCCAGCAAGCCCGGGCGAAAGACTAACCAACTGCAGTACATGCAGAATGTAGTGGTGAA  
 GACTCTGGAAACATCAGTTTGCTGGCCTTTCTACCAGCCTGTGGATGCAATCAAGCTGAACCTGCCT  
 GATTATCATAAAATAATAAAAAACCAATGGACATGGGGACTATCAAGAAGAGACTAGAAAAAATTATT  
 ATTGGAGTGCCAGTGAGTGTATGCAGGACTTCAACACCATGTTTACAACTGTTATTTATAAAGCC  
 CACAGATGATATAGTGCTAATGGCCAGGCCTTAGAGAAAATCTTTCTGCAGAAAGTGGCCAGATGCCT  
 CAGGAGGAAGTTGAACTATTGCCCTGCTCAAAGGGCAAAGGCCGGAAGCCAGCTGCAGGAGCCAAA  
 ATGCAGGTTCCCAACAAGTGGCAGCTGTGTCTTCGGTCTCCCAGCAACCCCTTCCAGAACATACCCCC  
 CACCGTGTCCAGACACCCGTCATTGCCGCTACCCTGTACCAACCATCACTGCAAACTGCAGTACGTT  
 CCAGTCCCCCACCCGCTGCACCGCCTCCTCTCGCAGACCCATCGTCCCTGTGGTCCCTCCCACACCGC  
 CTGTAGTCAAGAAAAAGGGCGTGAAGCGGAAAGCAGACACAACCACCCACAACATCTGCCATCACTGC  
 CAGCCGGAGTGAGTCTCCCCACCACTTTCAGAGCCCAAGCAAGCAAGGTAGTGGCCCGAAGGGAGAGC  
 GGGGGCCGCCCATCAAACCTCCCAAGAAGGACCTGGAAGATGGTGGAGTCCCACAGCACGCGGGTAAAA  
 AGGGAAAAGTGTCCGAGCACCTGCGGCACTGTGACAGCATCTCCGGGAGATGCTGTCCAAGAAGCATGC  
 TGCCTATGCGTGGCCCTTTACAAGCCAGTGGACGCGGAGGCGCTGGAGCTGCATGACTACCATGACATC  
 ATCAAGCACCCCATGGACCTCAGCACGGTCAAAGGAAGATGGATAGCCGAGAGTACCCAGATGCACAGG  
 GCTTTGTGCTGATATCCGGTTAATGTTCTCGAATTGTTATAAGTACAACCTCCAGACCAGAAAGTGGT  
 GGCCATGGCCAGGAAGCTCCAGGATGTGTTGAGATGAGGTTTGCCAAGATGCCCGATGAGCCCATGGAG  
 GCGCCTGCGCTGCCCGCTCCCACGGCCCCATCGTGAGCAAGGGGGCTGAGAGCAGCCGAGTAGTGAGG  
 AGAGCTCTCAGATTAGGCAGCTCAGACTCAGAAGAGGAGCGAGCCACTCGGCTGGCTGAGCTGCAGGA  
 GCAGACTGGTGCAGGACCTTCCAGGATCAGCTGTTGAATGTCTCCTCTGTGCAGCTGAAGGCCGTGCAC  
 GAACAGCTGGCTGCCTTGTCTCAGGCCAGTGAACAAACCAAGAAGAAGAAAGAGAAGAAGGAAAAGG  
 AAAAGAAGAAGAAAGACAAGGACAAGACAAGAGAAGGAGAAGCACAAGGCCAAGTCTGAGGAGGAGAA  
 GAAGGCCAAGGCAGCCCCAGCAGCAAGCAGGCCAGCAAAAAAGGCTCCCACCAAGAAGGCCAACAGC  
 ACAACCACAGCCAGCAGACAGCTCAAGAAGGGCGCAAGCAGGCATCTGCGTCTATGACTCAGAGGAAG  
 AGGAGGAGGGCCTGCCATGAGCTATGATGAAAAGCGACAATTAGCCTTGACATCAACCGCTGCCCGG  
 CGAGAAGCTAGGGCGTGTGGTGCACATCATTAGTCTCGGGAGCCCTCGTTCGGGACTCAAACCCAGAC  
 GAGATTGAGATTGACTTTGAGACCTGAAGCAACCACGCTGCGGGAAGTGGAGAGATATGTCAAGTCTT  
 GTTTACAAAAAAGCAGAGGAAACATTGTCAACAAGCGGGAAGAAGCAGGCAGCCAAATCGAAAGAGGA  
 GCTAGCTCAGGAGAAGAAAAAGGAGCTGGAGAAGCGGCTGCAGGATGTCAGTGGACAACCTGAACAGCAA  
 AAACCCACTAAGAAAGAGAAGTCCGGCTCAGCTCCCTCAGGAGGCCCATCAAGGCTCAGCAGTAGCAGCT  
 CCTCTGAGTCTGCGAGCAGTAGTCCAGTGGATCGAGCTCCGACAGCAGTGACTCAGAG

**ACGCGT**ACGCGGCCGCTCGAGCAGAACTCATCTCAGAAGAGGATCTGGCAGCAAATGATATCCTGGATT  
 ACAAGGATGACGACGATGAGTTTAA

**Protein Sequence:** >MR224008 representing NM\_001113574  
Red=Cloning site Green=Tags(s)

```
MSTTAAAPTGIPAVPGPVNPPPEVSNPSKPGRKTNQLQYMQNVVVKTLWKHQFAWPFYQPVDAIKLNLP
DYHKIIKNPMDMGTIKKRENNYYWSASECMQDFNTMFTNCYIYNKPTDDIVLMAQALEKIFLQKVAQMP
QEEVELLPPAPKGGKGRKPAAGAQNAGSQVAAVSSVSPATPFQNIPTVSQTPVIAATPVPTITANVTSV
PVPPPAAPPPATPIVPVVPPTPPVVKKKGVKRKAADTTTPTTSAITASRSESPPLSEPQAKVVARRES
GGRPIKPPKDLLEDGEVPOHAGKKGKLEHLRHCDLREMLSKKHAAYAWPFYKPVDAEALHLDYHDI
IKHPMDLSTVKRKMDSREYPDAQGFADIRLMFSNCYKYNPPDHEVVAMARKLQDVFEMRFKMPDEPME
APALPAPTAPIVSKGAESSRSSEESSSDSGSSDSEEERATRLAELQEQTGCGAFQDQLLNVSQKAVH
EQLAALSQAPVKNPKKKKEKKEKKEKDKDKDKEKEKHKAKSEEEKAKAAPAAQAQKQKAPTCKANS
TTTASRQLKGGKQASASYDSEEEEEGLPMSYDEKRQLSLDINRLPGEKLRVVIHQSRPSLRDSDNP
EIEIDFETLKPTTLRELERYVKSLQKQRKPLSTSGKKQAAKSKEELAQEKKKELEKRLQDVSGQLNSK
KPTKKEKSGSAPSGGPSRLSSSSSESASSSSSGSSSDSDSE
```

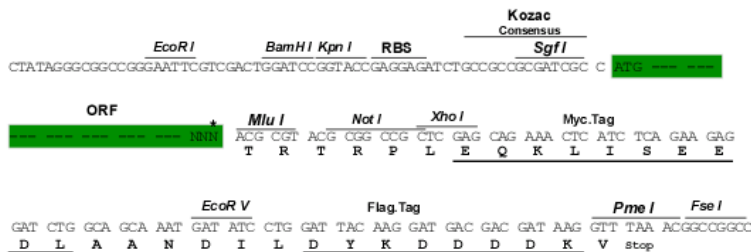
TRTRPLEQKLISEEDLAANDILDYKDDDDKV

**Chromatograms:** [https://cdn.origene.com/chromatograms/mm9009\\_g02.zip](https://cdn.origene.com/chromatograms/mm9009_g02.zip)

**Restriction Sites:** SgfI-MluI

**Cloning Scheme:**

Cloning sites used for ORF Shuttling:



\* The last codon before the Stop codon of the ORF

**ACCN:** NM\_001113574

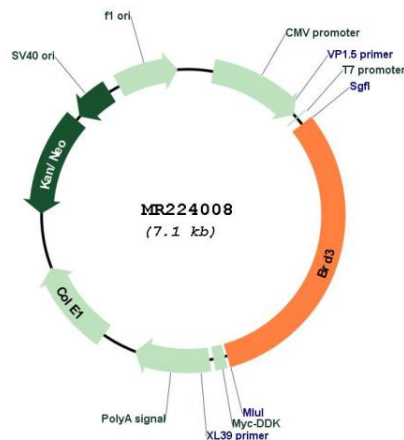
**ORF Size:** 2229 bp

**OTI Disclaimer:** The molecular sequence of this clone aligns with the gene accession number as a point of reference only. However, individual transcript sequences of the same gene can differ through naturally occurring variations (e.g. polymorphisms), each with its own valid existence. This clone is substantially in agreement with the reference, but a complete review of all prevailing variants is recommended prior to use. [More info](#)

**OTI Annotation:** This clone was engineered to express the complete ORF with an expression tag. Expression varies depending on the nature of the gene.

<b>Components:</b>	The ORF clone is ion-exchange column purified and shipped in a 2D barcoded Matrix tube containing 10ug of transfection-ready, dried plasmid DNA (reconstitute with 100 ul of water).
<b>Reconstitution Method:</b>	<ol style="list-style-type: none"> <li>1. Centrifuge at 5,000xg for 5min.</li> <li>2. Carefully open the tube and add 100ul of sterile water to dissolve the DNA.</li> <li>3. Close the tube and incubate for 10 minutes at room temperature.</li> <li>4. Briefly vortex the tube and then do a quick spin (less than 5000xg) to concentrate the liquid at the bottom.</li> <li>5. Store the suspended plasmid at -20°C. The DNA is stable for at least one year from date of shipping when stored at -20°C.</li> </ol>
<b>RefSeq:</b>	<u>NM_001113574.1, NP_001107046.1</u>
<b>RefSeq Size:</b>	5320 bp
<b>RefSeq ORF:</b>	2232 bp
<b>Locus ID:</b>	67382
<b>UniProt ID:</b>	<u>Q8K2F0</u>
<b>Cytogenetics:</b>	2 A3
<b>MW:</b>	82 kDa
<b>Gene Summary:</b>	Chromatin reader that recognizes and binds hyperacetylated chromatin and plays a role in the regulation of transcription, probably by chromatin remodeling and interaction with transcription factors (PubMed:21536911). Regulates transcription by promoting the binding of the transcription factor GATA1 to its targets (PubMed:21536911).[UniProtKB/Swiss-Prot Function]

### Product images:



Circular map for MR224008