

Product datasheet for **MR223980**

Lyg2 (NM_001033427) Mouse Tagged ORF Clone

Product data:

Product Type: Expression Plasmids
Product Name: Lyg2 (NM_001033427) Mouse Tagged ORF Clone
Tag: Myc-DDK
Symbol: Lyg2
Synonyms: Gm776
Mammalian Cell Selection: Neomycin
Vector: pCMV6-Entry (PS100001)
E. coli Selection: Kanamycin (25 ug/mL)
ORF Nucleotide Sequence: >MR223980 representing NM_001033427
Red=Cloning site Blue=ORF Green=Tags(s)

TTTTGTAATACGACTCACTATAGGGCGGCCGGAATTCGTCGACTGGATCCGGTACCGAGGAGATCTGCC
GCC**CGATCGCC**

ATGGTGCCCTCGGTGGTGTCTGGGGACTTATTGCTCTCGTTGGCACTGCCAAGGGCTCATATACTCACT
CTGTGCACTCCATGAACCCTCATGTGCACCCTCGTCTGTACCATGGCTGCTATGGGGACATCATGACCAT
GGAGACTTTTGGGGCCCCCTGCGACATAAATAATCTGATGAAGTGTGGGATCCACGGTTCGGAAATGTTT
GCCGAGATGGATTTGAAAGCCATAAAACCTTACCGGATCCTCATCAAAGAAGTGGGGCAGAGACTGTA
TTGACCCAGCCCTCATCGCTGCCATCATCTCCAGGGAAAGCCACGGCGGGGCTGTCTGCAAATGGCTG
GGACCATAAGGGGCAGAGGTTTGGCTTGATGCAGCTTGATAAAAAATATGTACCATCCTATTGGTTCTCGG
GATAGCAAGGAACACCTTCTACAGTCTGTTGGGATTCTAACAGAAAGAATTAAGGCAATGAAGAGGAAAT
TTCCCACCTGGAATACAGCTCAGCAGCTGAAAGGTGGTCTGACTGCTTTTAAGTCGGGGATGAAACTAT
TGTCACCTGCAGACATAGACGGTGACTTAGTGGATGATGTCCTTGCCCGGGCCAAATCTATAAGAGA
CATGGCTTC

ACGCGTACGCGGGCCGCTCGAGCAGAAACTCATCTCAGAAGAGGATCTGGCAGCAAATGATATCCTGGATT
ACAAGGATGACGACGATAAGGTTTAA



[View online »](#)

Protein Sequence: >MR223980 representing NM_001033427
 Red=Cloning site Green=Tags(s)

MVPSVVFVWGLIALVGTAKGSYTHSVHSMNPHVHPRLYHGCGDIMTMETFGAPCDINLMNCGIHGSEMF
 AEMDLKAIKPYRILIKEVQRHCIDPALIAAII SRESHGGAVLQNGWDHKGQRFGLMQLDKNMYHPIGSW
 DSEHLLQSVGILTERIKAMKRKFPTWNTAQQLKGGLTAFKSGMETIVTPADIDGDLVDDVLARAKFYKR
 HGF

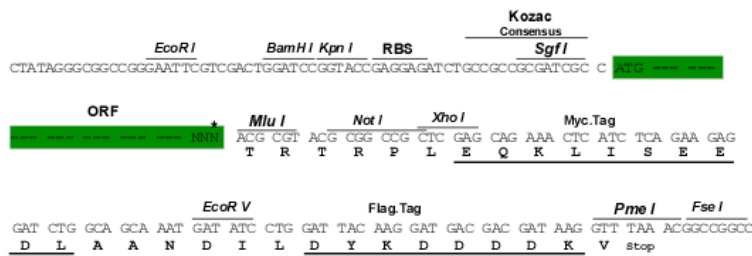
TRTRPLEQKLISEEDLAANDILDYKDDDDKV

Chromatograms: https://cdn.origene.com/chromatograms/mm9007_f05.zip

Restriction Sites: SgfI-MluI

Cloning Scheme:

Cloning sites used for ORF Shuttling:



* The last codon before the Stop codon of the ORF

ACCN: NM_001033427

ORF Size: 639 bp

OTI Disclaimer: The molecular sequence of this clone aligns with the gene accession number as a point of reference only. However, individual transcript sequences of the same gene can differ through naturally occurring variations (e.g. polymorphisms), each with its own valid existence. This clone is substantially in agreement with the reference, but a complete review of all prevailing variants is recommended prior to use. [More info](#)

OTI Annotation: This clone was engineered to express the complete ORF with an expression tag. Expression varies depending on the nature of the gene.

Components: The ORF clone is ion-exchange column purified and shipped in a 2D barcoded Matrix tube containing 10ug of transfection-ready, dried plasmid DNA (reconstitute with 100 ul of water).

Reconstitution Method:

1. Centrifuge at 5,000xg for 5min.
2. Carefully open the tube and add 100ul of sterile water to dissolve the DNA.
3. Close the tube and incubate for 10 minutes at room temperature.
4. Briefly vortex the tube and then do a quick spin (less than 5000xg) to concentrate the liquid at the bottom.
5. Store the suspended plasmid at -20°C. The DNA is stable for at least one year from date of shipping when stored at -20°C.

RefSeq: [NM_001033427.3](#), [NP_001028599.1](#)

RefSeq Size: 2564 bp

RefSeq ORF: 642 bp

Locus ID: 332427

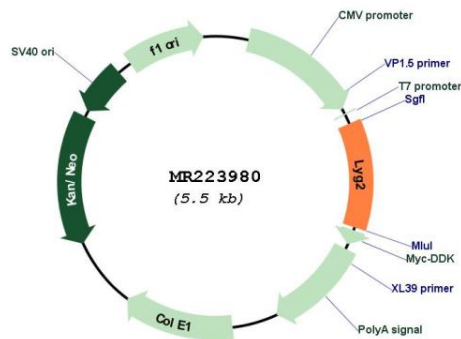
UniProt ID: [Q3V110](#)

Cytogenetics: 1 B

MW: 24.2 kDa

Gene Summary: May act as a potent antibacterial protein that may play a role in the innate immunity. [UniProtKB/Swiss-Prot Function]

Product images:



Circular map for MR223980