

## Product datasheet for MR223944

### Gpr132 (NM\_019925) Mouse Tagged ORF Clone

#### Product data:

|                           |   |
|---------------------------|---|
| Product Type:             | Expression Plasmids   |
| Product Name:             | Gpr132 (NM_019925) Mouse Tagged ORF Clone                         |
| Tag:                      | Myc-DDK   |
| Symbol:                   | Gpr132  |
| Synonyms:                 | G2a   |
| Mammalian Cell Selection: | Neomycin  |
| Vector:                   | pCMV6-Entry (PS100001)  |
| E. coli Selection:        | Kanamycin (25 ug/mL)  |
| ORF Nucleotide Sequence:  | >MR223944 ORF sequence<br>Red=Cloning site Blue=ORF Green=Tags(s) |

TTTTGTAATACGACTCACTATAGGGCGGCCGGAATTCGTCGACTGGATCCGGTACCGAGGAGATCTGCC  
GCC**CGGATCGCC**

ATGAGATCAGAACCTACCAATGCAGCAGGAAACACCACACTGGGGTTACCTCCGTTCTTCAGAGCACCT  
CAGTACCTTCTTCTGAGACCTGCCACGTCTCCTACGAGGAGAGCAGAGTGGTCTGGTGGTGTACAG  
TGCCGTGTGCCTGCTGGGCTACCAGCCAACCTGCCTGACTGCCTGGCTGACGCTGCTGCAAGTCTGCAG  
AGGAACGTGCTAGCCGTCTACCTGTTCTGCCTGTCCCTCTGTGAGCTGCTCTACATCAGCACGGTGCCAT  
TGTGGATCATCTACATCCAGAATCAGCACAAATGGAACCTGGGTCCGAGCCTGCAAGGTGACTGCTTA  
CATCTTCTTCTGCAACATCTACATCAGCATCCTCTTGCTCTGCTGCATTTCTGCGACCGCTACATGGCC  
GTGGTCTATGCACTGGAGAGCCGAGGCCACCGCCACCAGAGGACTGCTGTCAACATTTCTGCGTGTGTGA  
TTCTTCTTGTGGACTTGTAACTATCCAGTGTGGACATGAAGGTGGAGAAGAGTTTCTGCTTTGAGCC  
CCTGAGGATGAACAGCAAGATAGCCGGCTACCACTACCTGCGTTTACCTTTGGCTTTGCCATCCCTCTC  
GGCATCCTGGCGTTCACCAATCACCAGATCTCCGGAGCATCAAACCTCAGTGACAGCCTGAGCGCTGCGC  
AGAAGAACAAGGTGAAGCGCTCCGCCATCGCGTCTGTCACCATCTTCTGGTCTGCTTTGCTCCCTACCA  
CGTGGTACTCCTCGTCAAAGCTGCCAGCTTTTCTTCTACCAAGGAGACATGGATGCCGTGTGTGCCTTT  
GAAAGCAGACTGTACACAGTCTCTATGGTGTCTGTGCCTGTCTACAGTCAACAGTGTGGCTGACCCCA  
TCATCTACGTGCTGGGTACAGACCACTCTCGGCAAGAAGTGTCCAGAATCCACACAGGGTGGAAAAAGTG  
GTCCACAAAGACATATGTTACATGCTCAAAGGACTCTGAGGAGACACACTTGCCACAGAGCTTTCAAAC  
ACATACACCTTCCCAATCCCGCGCACCTCCAGGATCACAGCCAGCGAAGCTAGGTTTACTGTGCTCGC  
CAGAGAGACTGCCTGAGGAGCTCTGC

**ACGCGT**ACGCGGCCGCTCGAGCAGAAACTCATCTCAGAAGAGGATCTGGCAGCAAATGATATCCTGGATT  
ACAAGGATGACGACGATAAGGTTTAA



[View online »](#)

**Protein Sequence:** >MR223944 protein sequence  
Red=Cloning site Green=Tags(s)

MRSEPTNAAGNTTLGVTSVLQSTSVPSSETCHVSYEESRVVLVVVYSAVCLLGLPANCLTAWLTLLQVLQ  
 RNVLAVYLFCLSLCELLYISTVPLWIIYIQNHKWNLGPQACKVTAYIFFCNIYISILLCCISCDRYMA  
 VVYALESRGHRHQRTAVTISACVILLVGLVNYPVFDMKVEKSFCEPLRMNSKIAGYHYLRFTFGFAIPL  
 GILAFTHQIFRSIKLSDSLAAQKNKVKRSIAVVTIFLVCFAPYHVLLVKAASF SFYQGDMDAVCAF  
 ESRLYTVSMVFLCLSTVNSVADPIIYVLGTDHSRQEVSRHTGWKKWSTKYVTCSKDSEETHLPTLSN  
 TYTFPNPAHPPGSQPAKLGLLCSPERLPEELC

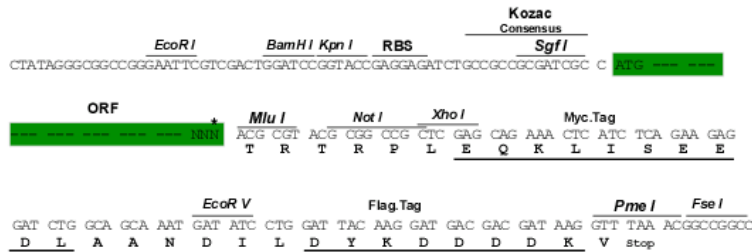
TRTRPLEQKLISEEDLAANDILDYKDDDDKV

**Restriction Sites:**

SgfI-MluI

**Cloning Scheme:**

Cloning sites used for ORF Shuttling:



\* The last codon before the Stop codon of the ORF

**ACCN:** NM\_019925

**ORF Size:** 1149 bp

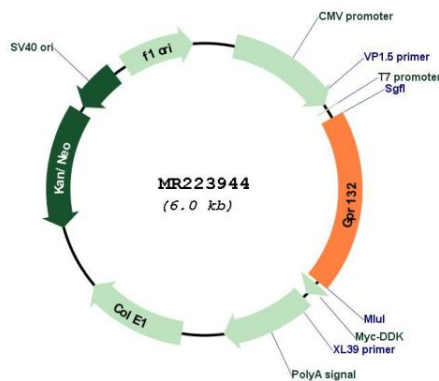
**OTI Disclaimer:** Due to the inherent nature of this plasmid, standard methods to replicate additional amounts of DNA in E. coli are highly likely to result in mutations and/or rearrangements. Therefore, OriGene does not guarantee the capability to replicate this plasmid DNA. Additional amounts of DNA can be purchased from OriGene with batch-specific, full-sequence verification at a reduced cost. Please contact our customer care team at [custsupport@origene.com](mailto:custsupport@origene.com) or by calling 301.340.3188 option 3 for pricing and delivery.

The molecular sequence of this clone aligns with the gene accession number as a point of reference only. However, individual transcript sequences of the same gene can differ through naturally occurring variations (e.g. polymorphisms), each with its own valid existence. This clone is substantially in agreement with the reference, but a complete review of all prevailing variants is recommended prior to use. [More info](#)

**OTI Annotation:** This clone was engineered to express the complete ORF with an expression tag. Expression varies depending on the nature of the gene.

|                               |   |
|-------------------------------|---|
| <b>Components:</b>            | The ORF clone is ion-exchange column purified and shipped in a 2D barcoded Matrix tube containing 10ug of transfection-ready, dried plasmid DNA (reconstitute with 100 ul of water).  |
| <b>Reconstitution Method:</b> | <ol style="list-style-type: none"> <li>1. Centrifuge at 5,000xg for 5min.</li> <li>2. Carefully open the tube and add 100ul of sterile water to dissolve the DNA.</li> <li>3. Close the tube and incubate for 10 minutes at room temperature.</li> <li>4. Briefly vortex the tube and then do a quick spin (less than 5000xg) to concentrate the liquid at the bottom.</li> <li>5. Store the suspended plasmid at -20°C. The DNA is stable for at least one year from date of shipping when stored at -20°C.</li> </ol>   |
| <b>RefSeq:</b>                | <u>NM_019925.4, NP_064309.1</u>   |
| <b>RefSeq Size:</b>           | 2439 bp   |
| <b>RefSeq ORF:</b>            | 1149 bp   |
| <b>Locus ID:</b>              | 56696   |
| <b>UniProt ID:</b>            | <u>Q9Z282</u>   |
| <b>Cytogenetics:</b>          | 12 F1   |
| <b>MW:</b>                    | 42.7 kDa  |
| <b>Gene Summary:</b>          | May be a receptor for oxidized free fatty acids derived from linoleic and arachidonic acids such as 9-hydroxyoctadecadienoic acid (9-HODE). Activates a G alpha protein, most likely G alpha(q). May be involved in apoptosis. Functions at the G2/M checkpoint to delay mitosis. May function as a sensor that monitors the oxidative states and mediates appropriate cellular responses such as secretion of paracrine signals and attenuation of proliferation. May mediate the accumulation of intracellular inositol phosphates at acidic pH through proton-sensing activity (By similarity).[UniProtKB/Swiss-Prot Function] |

### Product images:



Circular map for MR223944