

Product datasheet for **MR223931**

Cstf2 (NM_133196) Mouse Tagged ORF Clone

Product data:

Product Type:	Expression Plasmids
Product Name:	Cstf2 (NM_133196) Mouse Tagged ORF Clone
Tag:	Myc-DDK
Symbol:	Cstf2
Synonyms:	C630034J23Rik; Cstf64; mir-3112
Mammalian Cell Selection:	Neomycin
Vector:	pCMV6-Entry (PS100001)
E. coli Selection:	Kanamycin (25 ug/mL)



[View online »](#)

ORF Nucleotide Sequence:

>MR223931 representing NM_133196
 Red=Cloning site Blue=ORF Green=Tags(s)

TTTTGTAATACGACTCACTATAGGGCGGCCGGAATTCGTCGACTGGATCCGGTACCGAGGAGATCTGCC
 GCC**CGCATCGCC**

ATGGCGGGTTTGCCAGTGAGAGACCCTGCGGTGGATCGTTCCTGCGCTCCGTCTTCGTGGAAACATCC
 CTTATGAAGCTACTGAAGAACAACCTGAAGGACATTTCTCTGAGGTTGGGCCTGTTGTTAGTTTCAGATT
 GGTATACGATAGGGAGACAGAAAACAAAGGGCTATGGCTTCTGCGAGTACCAAGACCAAGAGACAGCA
 CTTAGTGCCATGCGGAACCTGAATGGGCGTGAATTCAGCGGGAGAGCACTTCGAGTGGATAATGCTGCCA
 GTGAAAAGAACAAGGAGGAACCTGAAGAGCCTTGGCACTGGTGCACCTGTCATAGAGTCACCTTATGGAGA
 AAGCATCAGCCCTGAGGATGCCCTGAATCCATTAGCAAAGCAGTTGCCAGTCTTCCACCAGAACAGATG
 TTTGAGTTGATGAAACAATGAAGCTCTGTGTCCAGAATAGTCCCAGGAAGCACGAAACATGTTGCTTC
 AGAATCCACAGCTGGCTTATGCTTTGTTGCAAGCACAGGTAGTGATGAGAATTGGGATCCTGAGATTGC
 GCTGAAAATTCTGCATCGCCAGACAAATATCCCAACGCTGATTTACAGCAACCCTCAGCCAGTTCATGTT
 GCTGGGCCTGGCTCAGGACCCAATGTTTCAATGAACCAGCAGAATCCGCAGGCCCTCAGGCTCAATCTT
 TGGGTGGAATGCATGTCATGGCGCACCTCCTATGATGCAAGCTTCTATGCCAGGTGGAGTTCACGCCCC
 AGTGCAGATGGCAGCTGCTGTAGGAGGACCTGGCCCTGGTTTCTTAGCCCTGCAGGAGTTATGCAAGCC
 CAAGTTGGAATGCAAGGAGCTGGACCACTGCCATGGAACGAGGACAAGTGCCAAATGCAAGACCCAGAG
 CAGCTATGCAGCGGGGAGCCTTGCTACCAACGTCCCACTCCTCGTGGTCTTTTAGGTGATGCTCCCAA
 TGACCCGCGGGGAGGCACCTTAACTGACTGTAACGGAGACGTAGAACCAGAGCTTACCTGGGACCA
 CCACCCTCATCAGGGCCACCCATGCACCATGTTCTGGTTCATGAAGGTCGTGGACCCCTCCACATG
 ACATGAGAGGAGGACCCCTAGCTGAGCCGAGACCTTTAATGGCAGAACCAAGAGGACCCATGCTAGATCA
 GAGGGGCCACCTCTGGATGCCAGAGGTGGAAGAGATCCCGAGGATTAGATGCACGGGGGATGGAGGCC
 AGAGCCATGGAAGCAAGAGGACTAGATGCCAGAGGACTGGAAGCCCGTCCATGGAGGCCGTGCCATGG
 AGGCCCGTCCATGGAAGCCCGTCCATGGAAGCCCGTCCATGGAGGCTCGTCCATGGAGGCCAGAGG
 CATGGACACCAGAGGCCAGTACCTGGACCTAGAGGACCTATGCCTAGTGAATCCAAGTCCCAATCCA
 ATGAACATGGGGCAGTTGTTCCCGAGGATCCAGACAGGTACCAGTCATGCAGGGAGCAGGCATGCAAG
 GAGCAAGCATGCAAGGTGGAAGCCAGCCTGGTGGCTTTAGTCTGGACAGAGCCAAGTACACCCAGGA
 TCATGAGAAGGCTGCTTTGATTATGCAGGTCCTTCAGCTACTGCAGACCAGATCGCCATGCTGCCTCT
 GAGCAAAGACAGAGTATCCTAATCTTAAAGGAACAGATACAGAAATCCACTGGGGCACCT

ACGCGTACGCGGCCGCTCGAGCAGAAACTCATCTCAGAAGAGGATCTGGCAGCAAATGATATCCTGGATT
 ACAAGGATGACGACGATAAGGTTTAA

Protein Sequence:

>MR223931 representing NM_133196
 Red=Cloning site Green=Tags(s)

MAGLPVRDPAVDRSLRSVFNIPYEATEEQLKDFSEVGPVVSFRLVYDRETGKPKGYGFCEYQDQETA
 LSAMRNLNREFSGRALRVDNAASEKNKEELKSLGTGAPVIESPYGESISPEDAPESISKAVASLPPEQM
 FELMKQMKLCVQNSPQEARNMLLQNPQLAYALLQAQVVMRIVDPEIALKILHRQTNIPTLISGNPQPVHV
 AGPGSGPNVSMNQNPQAPQAQSLGGMHVNGAPPMQASMPGGVPAPVQMAAVGGPGPSLAPAGVMQA
 QVGMQGAGPVMERGVPMQDPRAAMQRGALPTNVPTPRGLLDGAPNDPRGGLMTVTGDVEPRAYLGPP
 PPPHQGPPMHVPGHEGRGPPPHDMRGGPLAEPRLMAEPRGPMLDQRGPPLDARGGRDPRGLDARGMEA
 RAMEARGLDARGLERAMEARAMEARAMEARAMEARAMEARAMEARMDTRGPVPGPRGMPSPGIQGNP
 MNMGAVVPQGSRQVPMQAGMVGASMQGGSQPGGFSPGQSQVTPQDHEKAALIMQVQLQTADQIAMLPP
 EQRQSILILKEIQKSTGAP

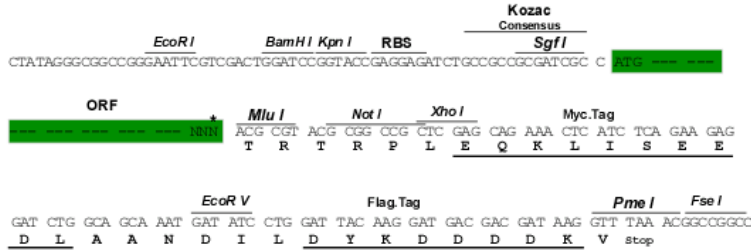
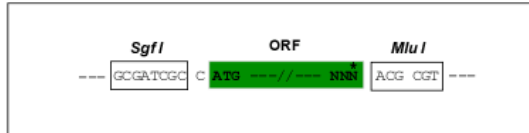
TRTRPLEQKLISEEDLAANDILDYKDDDDKV

Restriction Sites:

SgfI-MluI

Cloning Scheme:

Cloning sites used for ORF Shutting:



* The last codon before the Stop codon of the ORF

ACCN: NM_133196

ORF Size: 1740 bp

OTI Disclaimer: The molecular sequence of this clone aligns with the gene accession number as a point of reference only. However, individual transcript sequences of the same gene can differ through naturally occurring variations (e.g. polymorphisms), each with its own valid existence. This clone is substantially in agreement with the reference, but a complete review of all prevailing variants is recommended prior to use. [More info](#)

OTI Annotation: This clone was engineered to express the complete ORF with an expression tag. Expression varies depending on the nature of the gene.

Components: The ORF clone is ion-exchange column purified and shipped in a 2D barcoded Matrix tube containing 10ug of transfection-ready, dried plasmid DNA (reconstitute with 100 ul of water).

Reconstitution Method:

1. Centrifuge at 5,000xg for 5min.
2. Carefully open the tube and add 100ul of sterile water to dissolve the DNA.
3. Close the tube and incubate for 10 minutes at room temperature.
4. Briefly vortex the tube and then do a quick spin (less than 5000xg) to concentrate the liquid at the bottom.
5. Store the suspended plasmid at -20°C. The DNA is stable for at least one year from date of shipping when stored at -20°C.

RefSeq: [NM_133196.6](#), [NP_573459.1](#)
RefSeq Size: 4352 bp

RefSeq ORF: 1743 bp

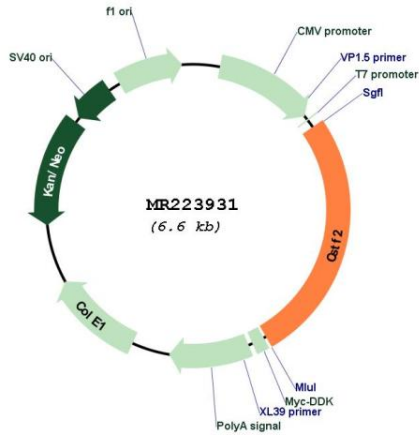
Locus ID: 108062

UniProt ID: [Q8BIQ5](#)
Cytogenetics: X E3

MW: 61.8 kDa

Gene Summary: One of the multiple factors required for polyadenylation and 3'-end cleavage of mammalian pre-mRNAs. This subunit is directly involved in the binding to pre-mRNAs (By similarity). [UniProtKB/Swiss-Prot Function]

Product images:



Circular map for MR223931