

Product datasheet for **MR223929**

Abcc9 (NM_011511) Mouse Tagged ORF Clone

Product data:

Product Type: Expression Plasmids
Product Name: Abcc9 (NM_011511) Mouse Tagged ORF Clone
Tag: Myc-DDK
Symbol: Abcc9
Synonyms: AI414027; AI449286; SU; SUR; Sur2; SUR2A; SUR2B
Vector: pCMV6-Entry (PS100001)
E. coli Selection: Kanamycin (25 ug/mL)
Cell Selection: Neomycin
ORF Nucleotide Sequence: >MR223929 representing NM_011511
 Red=Cloning site Blue=ORF Green=Tags(s)

TTTTGTAATACGACTCACTATAGGGCGGCCGGAATTCGTCGACTGGATCCGGTACCGAGGAGATCTGCC
 GCC**CGGATCGCC**

ATGAGCCTTTCTTTTGTGGGAACAACATCTCCTCCTACAACATCTATTATGGTGTCTCCAAAACCCCT
 GCTTTGTGGAGCCTCAACCTGGTCCCACATGTCTTCTGCTGTTTATCACCTTCCAATACTGTTTCAT
 TGGATGGGGGAGCAAAGCTCAAAGTGCAAATTCATCATAACAGTGGCTTCATTTTCCGGACACAAC
 CTGAGATGGATTCTGACGTTTGCCTCCTGTTTGTGCATGTTTGTGAGATAGCGGAAGGCATCGTTTCAG
 ACTCGCATCGGGCGTCCAGGCATCTCCACCTTTTCATGCCGGCTGTGATGGGATTTGTCGCCACAACAAC
 GTCCATCGTCTATTATCATAACATTGAAACATCAAATTTCCCTAAATTACTTTTAGCTTTATTCTGTAC
 TGGGTAATGGCCTTTATTACAAAGACGATAAAGTTGGTCAAATACTGGCAGTTGGGGTGGGGAGTGTGAG
 ACCTGCGCTTCTGCATCACAGGAGTGTGGTCACTTGAATGGGCTGCTGATGGCTGTGGAGATCAATGT
 CATCCGGGTCAGAAGATATGTTTCTTCATGAATCCCCAGAAAGTGAAGCCTCCGGAAGACCTCCAGGAC
 CTGGGCGTGAGGTTCTCCAGCCATTTGTGAATTTACTGTCCAAAGCTACTTACTGGTGGATGAACACAC
 TTATCATATCAGCTCACAGGAAACCTATCGATCTGAAGGCGATTGAAAGTTGCCGATAGCGATGAGGGC
 GGTGACCAATTATGTCTGCCTAAAGGAAGCCTATGAAGAGCAGAAGAAAAGGCTGCCGATCATCCAAAT
 CGGACTCCCTCCATATGGCTGGCCATGTACAGAGCTTTTGGGAGACCAATCCTGTGAGCAGCACATTCC
 GGTACTTGGCTGACTTGTGGGGTTTGGTGGTCTCTTTGTATATCTGGGATAGTCCAGCGAGTAAATGA
 AAAGACTAACACAACAAGAGAAATGTTTCCAGAGACACTCTCATCAAAGGAATTTCTGAAAAACGCCAT
 GTGCTGGCTGTCTGCTTTTCTGGCCCTTATCCTACAGAGGACCTTTCTGCAGGCTTCTACTATGTGA
 CCATAGAGACCGGCATCAACCTCCGTGGGGCTCTGCTGGCTATGATATAAATAAATCCTTCGGCTCTC
 GACTTCTAACCTATCCATGGGTGAGATGACCCTGGGACAGATCAACAACCTGGTTGCCATAGAAACCAAT
 CAGCTCATGTGGTTCTTGTCTGTGTCCCAATCTGTGGGCCATGCCTGTTGAGATCATAATGGGGTGA
 TCCTGCTCTACAATTTGCTTGGGTGAGTGCAGTGGTTGGCGCTGCAGTATTGTGCTCCTTGCACCGAT
 TCAGTACTTCATTGCCACGAAGCTGGCGGAGGCTCAGAAGAGCACTCTGGATTATCCACCAGAGAGTTG
 AAGAAGACGAATGAGATACTGAAGGGCATCAAACCTCTTAAGCTGTACGCTGGGAGCACATTTTCTGCA



AGAGCGTGGAGGAGACACGAATGAAGGAGCTCTCCAGCCTCAAAACCTTCGCGCTCTACACGTCACTTTC
CATCTTATGAACGCAGCAATCCCATCGCAGCTGTTCTTTCGACATTTGTGACACATGCGTACGCCAGT
GGAAACAACCTGAAGCCTGCAGAGGCCCTTTCCTCTCTGTCTCTTCCACATCCTCGTCACACCCGCTCT
TCCTGTGTCCACGGTGGTCAGATTTCGAGTCAAAGCCATCATCAGTGTCAAAGCTGAATGAGTTTCT
CTTGAGCGATGAGATTGGTGAGGACAGCTGGAGGGCCGGGAGGGCAGCTGCCTTTCGAGTCTGTAAAG
AAGCACACCGGAGTGAATCAAAACCAATAAACAGGAAGCAGCTGGACGGTACCACCTGGACAGCTACG
AGCAAGCACGGCCCTCCGGCCGCTGAGACGGGAAGACATTGCCATAAAGGTGACAAATGGATACTCTC
ATGGGGCAGTGGTTTAGCTACATTGTCCAATATTGACATTGCAATTCCAACAGGTGAGTAACTGATT
GTAGGCCAAGTGGTTGTGGAAAATCATCTCTTCTCCTTGCCATCCTTGGTGAGATGCAGACCCTGGAAG
GAAAAGTTACTGGAACAATGTAATGAATCTGAGCCTCTTTTGAAGCAACCCGAAGCAGAAGCAGGTA
TTCTGTGGCTTACGCTGCCAGAACCTTGGCTCCTAAATGCTACAGTTGAGGAAAATATCACTTTTGA
AGTCTTTCAACAGACAGAGGTACAAGGCTGTACCCGATGCCTGTCTCTTACAGCCAGACATTGATTTGC
TACCATTTGGAGACCAACTGAAATCGGAGAGAGGGGCATCAACCTGAGTGGGGTCCAGAGCAGAGAAT
CTGCGTGGCACGGGCACTCTACAAAACACCAACATCGTCTTTTGGACGACCCATTCTCTGCCCTGGAC
ATCCACCTGAGCGATCATTTGATGCAGGAAGGAATCCTGAAGTTCTCCAGGATGACAAGAGGACGGTTG
TTCTTGTGACGCACAACTGCAGTACCTGACGCAGCTGACTGGATCATAGCCATGAAGGATGGCAGTGT
GTTAAGGGAAGGGACTTTGAAAGACATTGAGCCAAAGACGTGGAGCTTTATGAACACTGAAAAACCTC
ATGAATAGACAGGATCAAGAATTAGAAAAGGACATGGAAGCAGACCAACAACACTGGAGAGGAAGACTC
TCCGGAGAGCCATGTATTCAAGAGAGGCCAAGGCACAGATGGAGGATGAAGATGAAGAGGAGGAAGGGA
GGAAGATGAGGAAGATAACATGTCAACGGTGTAGAGGCTCAGGACCAAGATGCCCTGGAAGACCTGCTGG
TGGTACCTCACTTCAAGAGGGTTTTTCTGCTCTTCTCATGATCTTCTCAAGCTTTTGAAGCACTCGG
TGATTGTGGCTATAGACTACTGGCTAGCTACGTGGACATCCGAATACAGTATAAACCACTCTGAAAAGC
TGACAGACTTCTATGTGGCTGGGTTTCCAGTCTCTGTGGAGCAGGCATTTTCTTCCCTGCTCGTCAAC
TCCTCACCGTGGAAATGGATGGGCTCACAGCCGCAAGAACCTCCACCACAACCTCCTCAATAAGATAA
TTCTCGGGCCAATAAGGTTCTTGTATACACACCGCTGGGCTGATCCTCAATCGTTTTTCTGCTGATAC
GAACATCATCGACCAGCATATCCCTCCGACCTGGAGTGCCTGACGCGCTCCACCCTGCTGCTGCTGCT
GCTATTGGGATGATCTCCTATGTACACCCGTTTCTCGTGCCTTGCGCCCTGGGTGATAGCCTTTT
ATTTTCATCCAGAAACTTCCGGTTGCCTTAAGGATCTCCAGGAACCTGACGACAGCACCAGCTCCC
CCTGCTTTGCTCACTTCTCAGAAACAGTGAAGGGCTCACCCTATCCGGGCTTCCAGGCATGAAACCAGA
TTCAAGCAACGCATGCTGGAGTGCAGACACGAACAACATTGCCTACTTATTTCTCTCAGCAGCCAACA
GATGGCTGGAGGTCAGGACGGACTATCTGGGAGCGTGCATTGTTCTGACAGCCTCCATTGCATCCATTAG
TGGCTCTTCCAACCTGACTGGTGGGCTTGGGCTTCTCTATGCCCTCAGATAACCAATTACCTAAAT
TGGGTTGTAAGGAACTTGGCCGACCTGGAAGTCCAGATGGGTGCAGTGAAGAAAGTGAACAGTTTCTTGA
CTATGGAGTCCGAGAACTATGAAGGCACCATGGATCCTTCTCAAGTCCCAGAGCACTGGCCACAGGAAGG
CGAGATCAAGATTCAGATCTGTGTGCAGATGAAAAAACCCTGAAGCCCCTTCTGAAACATGTCAAG
GCTTACATCAAACCCGGGCAGAAGGTGGGCATCTGTGGTCAAGTGGCAGTGGGAAGTCTCCTTATCCC
TGGCTTTCTTTCAGAAATGGTCGACATATTGACGGAAAGATAGTCATTGATGGGATAGACATCTCAAAC
GCCCTTGCACACGCTCCGCTCCAGGCTGCCATCATTCTCCAGGACCAATCCTGTTCCAGCGCTCCATC
AGGTTTAACTGGATCCTGAATGCAAGTGCACAGATGACAGGCTCTGGGAGGCTAGAAAATGGCCAGC
TGAAAGAATATGGTCAAATCTCTGCCGGAGGCTTAGATGCCACTGTCACCGAAGGTGGTGAAGAACTTCA
GTTGGACAGAGACAGCTGTTCTGCCTGGCCAGGCTTTGTTGGAAGAGCAGTATACTCATCATGGAT
GAAGCCACTGTTCCATCGACATGGCCACGAAAAACATTTGAGAAAAGTATGATGACAGCCTTTGCGG
ATCGCACGGTCGTAACCATAGCTCATCGGGTTCACACCATCTGACTGCAGACCTGGTTATTGTGATGAA
GAGAGGAAATATTTTGAATACGACACCCCGAAAAGCCTCTTGGCCAGGAAGATGGAGTGTTCCTCG
TTTGTCCGTGCAGACATG

ACGCGTACGCGGCCGCTCGAGCAGAACTCATCTCAGAAGAGGATCTGGCAGCAATGATATCCTGGATT
ACAAGGATGACGACGATAAGGTTTAA

Protein Sequence: >MR223929 representing NM_011511
 Red=Cloning site Green=Tags(s)

```

MSLSFCGNNISSYNIYYGVLQNPCFVDALNLVPHVFLFITFPILFIGWGSQSSKVQIHHNTWLHFPGHN
LRWILTFALLFVHVCEIAEGIVSDSHRASRHLHLMFPAVMGFVATTTIVYYHNIETSNFPKLLALFLY
WYMAFITKTIKLVKYWQLGWGVSRLRFCITGMVILNGLLMAVEINVIRVRYVFFMNPQKVKPPEDLQD
LGVRFLOPFVNLKATYWMNTLII SAHRKPIDLKAIGKLP IAMRAVTNYVCLKEAYEEQKKAADHPN
RTPSIWLAMYRAFGRPILLSSTFRYLADLLGFAGPLCISGIVQRVNEKNTTREMFPETLSKEFLENAH
VLAVLLFLALILQRTFLQASYVYTIETGINLRGALLAMIYNKILRLSTSNLSMGEMTLGQINNLVAIETN
QLMWFLFLCPNLWAMPVQIIMGVILLYNLLGSSALVGAIVVLLAPIQYFIATKLAEAQKSTLDYSTERL
KKTNEILKGIKLLKLYAWEHIFCKSVEETRMKELSSLKTFALYTSLSIFMNAAPIAAVLATFVTHAYAS
GNLKPAAEFASLSLPHILVTPFLSTVVRFAVKAIISVQKLNFLSDEIGEDSWRAGEGLPFESCK
KHTGVQSKPINRQKPGRYHLDSEYQARRLPAETEDIAIKVTNGYFSWGSGLATLSNIDIRIPTGQLTMI
VGQVCGKSSLLAILGEMQTLGKVVYNNVNESEPSFEATRSRSRYSVAYAAQKPWLLNATVEENITFG
SPFNRQRYKAVTDACSLQPDIDLLPFGDQTEIGERGINLGGQRQRICVARALYQNTNIVFLDDPFSAID
IHLSDHLMQEGILKFLQDDKRTVVLVTHKLQYLTHADWIIAMKDGSVLREGTLKDIQTKDVELYEHWKTL
MNRQDQLEKDMQADQTLERKTLRRAMYSREAKAQMEDEDEDEDEDEDEDEDEDEDEDEDEDEDEDEDE
WYLTSGGFFLLFLMIFSKLLKHSVIVAIDYWLATWTSEYSINHPGKADQTFYVAGFSILCGAGIFLCLVT
SLTVEWMGLTAAKNLHNNLLNKIILGPIRFDDTTPGLILNRFSA DTNIIDQHIPP TLES LTRSTLLCLS
AIGMISYATPVFLVALAPLGVAFYFIQKYFRVASKDLQELDDSTQLPLLCFSETAEGLTTRAFRHRHTR
FKQRMLELTD TNIA YLFLSAANRWLEVRTDYLGACIVLTASIASISGSSNSGLVGLGLLYALTITNYLN
WVVRNLADLEVQMGAVKKNVNSFLTMESENYEGTMDPSQVPEHWPQEGEIKIHDLCVRYENNLKPVLKHKV
AYIKPGQKVGICGRTGSGKSSLSLAFFRMVDIFDGKIVIDGIDISKLPLHLRSRLSII LQDPI FSGSI
RFNLDPECKCTDDRLWEALEIAQLKNMVKSLPGGLDATVTEGGENFSVQQRQLFCLARAFVRKSSILIMD
EATASIDMATENILQKVMTAFADRTVVTIAHRVHTILTADLVI VMKRGNI LEYDTPESLLAQEDGVFAS
FVRADM
  
```

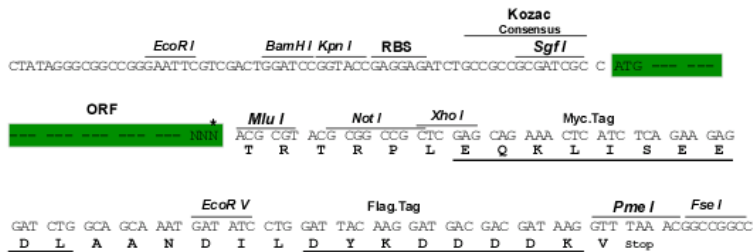
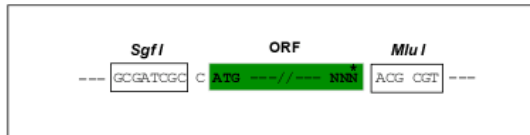
TRTRPLEQKLISEEDLAANDILDYKDDDDKV

Restriction Sites:

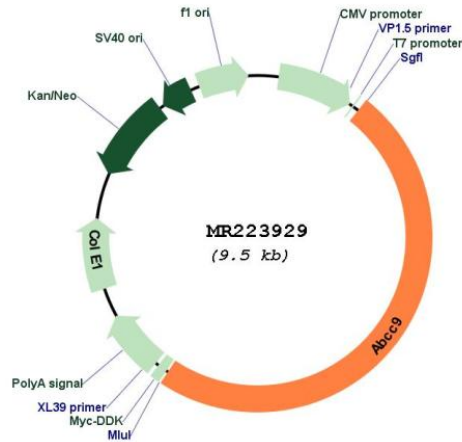
Sgfl-MluI

Cloning Scheme:

Cloning sites used for ORF Shuttling:



* The last codon before the Stop codon of the ORF

Plasmid Map:


ACCN: NM_011511

ORF Size: 4638 bp

OTI Disclaimer: The molecular sequence of this clone aligns with the gene accession number as a point of reference only. However, individual transcript sequences of the same gene can differ through naturally occurring variations (e.g. polymorphisms), each with its own valid existence. This clone is substantially in agreement with the reference, but a complete review of all prevailing variants is recommended prior to use. [More info](#)

OTI Annotation: This clone was engineered to express the complete ORF with an expression tag. Expression varies depending on the nature of the gene.

Components: The ORF clone is ion-exchange column purified and shipped in a 2D barcoded Matrix tube containing 10ug of transfection-ready, dried plasmid DNA (reconstitute with 100 ul of water).

Reconstitution Method:

1. Centrifuge at 5,000xg for 5min.
2. Carefully open the tube and add 100ul of sterile water to dissolve the DNA.
3. Close the tube and incubate for 10 minutes at room temperature.
4. Briefly vortex the tube and then do a quick spin (less than 5000xg) to concentrate the liquid at the bottom.
5. Store the suspended plasmid at -20°C. The DNA is stable for at least one year from date of shipping when stored at -20°C.

RefSeq: [NM_011511.2](#), [NP_035641.1](#)

RefSeq Size: 7362 bp

RefSeq ORF: 4641 bp

Locus ID: 20928

UniProt ID: [P70170](#)

Cytogenetics: 6 74.35 cM

MW: 174.9 kDa

Gene Summary: The membrane-associated protein encoded by this gene is a member of the superfamily of ATP-binding cassette (ABC) transporters. ABC proteins transport various molecules across extra- and intra-cellular membranes. ABC genes are divided into seven distinct subfamilies (ABC1, MDR/TAP, MRP, ALD, OABP, GCN20, White). This protein is a member of the MRP subfamily which is involved in multi-drug resistance. The human protein is thought to form ATP-sensitive potassium channels in cardiac, skeletal, and vascular and non-vascular smooth muscle. Protein structure suggests a role as the drug-binding channel-modulating subunit of the extrapancreatic ATP-sensitive potassium channels. Alternative splicing of this gene results in multiple transcript variants. [provided by RefSeq, Jul 2015]