

Product datasheet for MR223919

Vmn1r55 (NM_001166706) Mouse Tagged ORF Clone

Product data:

Product Type: Expression Plasmids
Product Name: Vmn1r55 (NM_001166706) Mouse Tagged ORF Clone
Tag: Myc-DDK
Symbol: Vmn1r55
Synonyms: Gm403; Gm1422; V1rd5
Mammalian Cell Selection: Neomycin
Vector: pCMV6-Entry (PS100001)
E. coli Selection: Kanamycin (25 ug/mL)
ORF Nucleotide Sequence: >MR223919 representing NM_001166706
Red=Cloning site Blue=ORF Green=Tags(s)

TTTTGTAATACGACTCACTATAGGGCGGCCGGAATTCGTCGACTGGATCCGGTACCGAGGAGATCTGCC
GCC**CGATCGCC**

ATGGAAATGTTGGCTCTTCAGATCCTTTTGCTTTGCCAGGTTGTGGTTGGGACTGTGGCAACATCCTTC
TGTTTGTCCATAATTTCTCTCCAATCTTGACTGACTCCAGACTGAGGCCCATACAGGTCATTCTAATCAA
CTTGGCTGTGGCAATGCATTTCATGCTCCTTCTTTGACATATTCACATGACATGATTGATTTGGTTCCA
AAGAACCCTCCAACCTGACCTCAAATGCAAACCTGCACACTTCTTTCACATGGTGGCTCGAGGCACAAACA
TGTGTTCTACCTGTGCCTCAGCACCTACCAATTTGTCACCTTGTTCCTGGTAACTGGGCTAGGGTCAT
GTTTCAGAGAAATATCCCCAAGGTCGTGAGATACTCTTGTACAGTTGCTGGTTGTTTCAGTGTGTTAAAT
AATGCTTACATCCCAATGAATGTCAGGGTCCCAAAAAATCACACAATGACTCTGATTCTCAAGGCAAGA
GGATGTGCTCTATCTCTGTGGTCAATGTAGACATGAATTAATTGTCAGTTTTCTATGACATCATATTCAT
TGGCATCATGGTCTGGACCAGTGTCTCCATGGTGATTCACCTAAATAGACACCACCAGAGAATGCACTAC
ATTCATAATCCCAATCAAAGCAACAGAGGCCATGCTGAAACCAGAGCAGCCACACCATCCTGATGCTGG
TGGTCACATTTGTGAGCTTATAATTCTAAATTTGATTTTGTGTTTTATTTACGTTTCTTTGTGGAATC
TCGGCGCTGGTTGAGGAATGTCATAGAATTTCTGGCTCGAGCTTCCCCACCATTCTCCTTTACTGTTG
ATCTTTAGGGATCCTAGGGTCTTGTCTCTGTACTTCAATGTTGGGCTTGAATCCATGTGACTGGCA
AAGTCATTACAGAGGAACAG

ACGCGTACGCGGCCGCTCGAGCAGAAACTCATCTCAGAAGAGGATCTGGCAGCAATGATATCCTGGATT
ACAAGGATGACGACGATAAGGTTTAA



[View online »](#)

Protein Sequence: >MR223919 representing NM_001166706
Red=Cloning site Green=Tags(s)

MEMLALQILLLCQVVVGTVGNILLFVHNFSPILTDSRLRPIQVILINLAVANAFMLLLLTYSHDMIDLVP
 KNPPDTLCKKLAHFFHMVARGTNMCSTCVLSTYQFVTLVPGNWARVMFREISPKVVRYSCWLF SVLN
 NAYIPMNVVRGPKKSHNDSDSQGKRMCSISVVNVDMNYLQF SYDIIIFIGIMVWTSVSMVIHLNRHHQRMHY
 IHNPQSNRGAETRAAHTILMLVVT FVSLYILNCICVLFHVSFVESRRWLRNVIEFLALSFPTISPLLL
 IFRDPRGPCSLYFNVGLEIHTVGKVIITEEQ

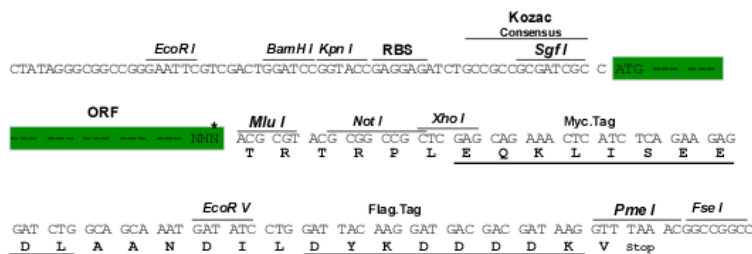
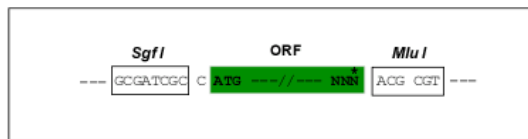
TRTRPLEQKLISEEDLAANDILDYKDDDDKV

Chromatograms: https://cdn.origene.com/chromatograms/mm9071_g07.zip

Restriction Sites: SgfI-MluI

Cloning Scheme:

Cloning sites used for ORF Shuttling:



* The last codon before the Stop codon of the ORF

ACCN: NM_001166706

ORF Size: 930 bp

OTI Disclaimer: The molecular sequence of this clone aligns with the gene accession number as a point of reference only. However, individual transcript sequences of the same gene can differ through naturally occurring variations (e.g. polymorphisms), each with its own valid existence. This clone is substantially in agreement with the reference, but a complete review of all prevailing variants is recommended prior to use. [More info](#)

OTI Annotation: This clone was engineered to express the complete ORF with an expression tag. Expression varies depending on the nature of the gene.

Components: The ORF clone is ion-exchange column purified and shipped in a 2D barcoded Matrix tube containing 10ug of transfection-ready, dried plasmid DNA (reconstitute with 100 ul of water).

Reconstitution Method:

1. Centrifuge at 5,000xg for 5min.
2. Carefully open the tube and add 100ul of sterile water to dissolve the DNA.
3. Close the tube and incubate for 10 minutes at room temperature.
4. Briefly vortex the tube and then do a quick spin (less than 5000xg) to concentrate the liquid at the bottom.
5. Store the suspended plasmid at -20°C. The DNA is stable for at least one year from date of shipping when stored at -20°C.

RefSeq: [NM_001166706.1](#), [NP_001160178.1](#)

RefSeq Size: 933 bp

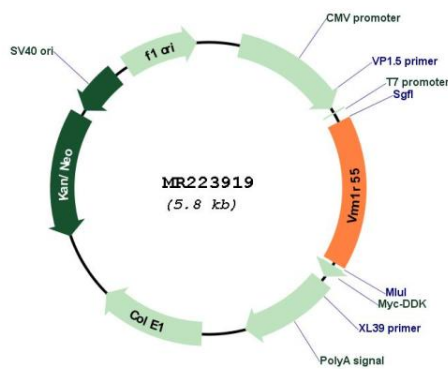
RefSeq ORF: 933 bp

Locus ID: 384522

Cytogenetics: 7 A1

MW: 35.5 kDa

Product images:



Circular map for MR223919