

Product datasheet for **MR223862**

Myo3a (NM_148413) Mouse Tagged ORF Clone

Product data:

Product Type: Expression Plasmids
Product Name: Myo3a (NM_148413) Mouse Tagged ORF Clone
Tag: Myc-DDK
Symbol: Myo3a
Synonyms: 9030416P08Rik
Mammalian Cell Selection: Neomycin
Vector: pCMV6-Entry (PS100001)
E. coli Selection: Kanamycin (25 ug/mL)
ORF Nucleotide Sequence: >MR223862 representing NM_148413
 Red=Cloning site Blue=ORF Green=Tags(s)

TTTTGTAATACGACTCACTATAGGGCGGCCGGAATTCGTCGACTGGATCCGGTACCGAGGAGATCTGCC
 GCC**CGATCGCC**

ATGCAGATGACAGAAACCTTTGAGATGCTTCCATTAATTGGAAAAACAATCATCTTTGATAACTTTCCTG
 ATCCTTCTGATACATGGGAAATCATTGAAACCATCGGCAAAGGAACCTTATGGGAAGGTTTTCAAAGTCT
 GAATAAGAAAAGTGGCCAGAAAGCAGCAGTCAAAATTTGGATCCAATCCATGATATCGATGAAGAGATT
 GAAGCAGAGTAAACATCTTAAGAACACTTTCTGACCACCCAAATGTGGTCAGATTCTACGGGATTTACT
 TAAAAAAGGACAAGATAAATGGAGATAAGCTATGGCTGGTCTGGAGCTGTGCAATGGAGGATCAGTGAC
 TGATCTTGTGAAAGGATTTCTGAAGAGGGGAGAAAGAATGAGCGAGCCTGTAATTGCATATATTTTACAC
 GAAGCACTAATGGGACTTCAGCATCTTCATAGCAACAAAACCATCCACCGTGATGTCAAAGGAAATAACA
 TCCTGTTGACTACTGAAGGTGGAGTAAACTAGTAGATTTTGGTGTGTCTGCACAGCTCAGCAGCACCCG
 GCACCGCTGAACACCTCCGTAGGAACACCATTTGGATGGCTCCTGAGGTGATTGCTTGTGAACAGCAA
 CTAGATACCCTTACGATGCTAGATGTGACACATGGTCCCTGGGTATCACGGCTATTGAGCTTGGTGATG
 GAGATCCTCCACTAGCTGAGCTGCATCCATGAGAGCACTTTCAAAATACCAAGGAATCCACCCCTAA
 ACTCCGGCAGCCTGAGCTGTGGTCCGCAGAGTTCAATGACTTCATTAGCAAATGCTTGACCAAAGATTAT
 GAAAAGCGTCCAACAGTGCAGATCTTTTGAAGCATAAATTTATTACTCAGATCGAGGGCAAAGATGTGA
 TACTACAAAAACAATAATGGAATTCATTGATATCCATCAATGCCTGGGAAGCACAGAGAAGGCCAGGCA
 TGAACGAATTCATACCAAGAAAGGTAATTTAAATAGATCTCTCATTTCCAGTCTGAAGGATGTAGACGAT
 TTGGCAACCTTAGATGTTCTGGATGAGAACACAGTGTCTGAACATCTTGAGAAATGTTATTCCAGAGATC
 AGATCTATATTTATGTGGGAGATATTCTCATTGCACTGAACCCTTTTCAGAGTCTGGGTATTTATCCAC
 AAAGCTTTCTAGTTGTATATTGGAGCAAAGAGAACTGCCAACCCACCTCACATTTTGCATGGCTGAT
 TTGGGATACCAGTCTATGGTCACATATAATGCAGACCAGTGCATCGTTATTTCTGGAGAAAGTGGTGCTG
 GCAAGACAGAGAGCGCTCATCTTCTGGTCAACAGCTCACTGTGCTTGGAAAGGCTAATAACAGAACCCT
 GCAAGAGAAGATTTACAAATGAACAATTTGGTTGAAGCCTTTGGCAATGCCTGCACTATTATAAATGAC



[View online >](#)

AACTCCAGCAGATTTGGAAAATACTTAGAAATGAAATTTACTTCTCTGGAGCTGTAGTTGGGGCACAGA
 TTTCTGAATACCTTCTGGAAAAATCCCCTGTTCATTACCAAGCCATTGGAGAAAAAATTTTCATATTTT
 TTAATACATTTATGCTGGGTTAGCAGAAAAAGAAACTAGCTCTTTACAAATTCCTGAAAAACAAGCCA
 CCCAGGTACTTACAAAATGACAACCTCAGAACAGTACAGGACATGATGAACAATAGTTTCTATAAATCCC
 AGTATGAATTAATTGAACAATGTTTCAAAGTCATAGGTTTACAATGGAGCAACTTGAAGTGTATATAG
 TGTACTCGCCGCATCTGAACGTTGGAAACATTGAATTCCTCGGTGGCAACTGAATACCAGATGGAC
 AAGAGCTACATTTGCAATCACACTGCTCTGGAAAACTCCGCTTCTTTGCTTTGCATTCAAGCAGATGAGC
 TGCAGGAAGCTTCCACTCACACTGTGTGGTCACTAGAGGAGAAAAAATTATTCCGACCCAACACAGTGGA
 AAAGGCTGCTGATGTCGAGATGCCATGGCCAAAACCTTTATATGGCCGCTCTTTAGCTGGATAGTCAAT
 TGTATTAACAGCTTGTGAAGCATGACACATCACCTAGTGGGGATGAGGAGCTAAACATCGGCATTTCTG
 ACATATTCGGCTTTGAAAACTTCAAAGAAATTCCTTTGAGCAGCTGTGCATTAACATTGCAAAATGAACA
 GATCCAGTATTATTTAATCAGCACGTGTTTGCATGGGAGCAGAATGAATACCTAAATGAAGATGTAGAT
 GCTAGAGTTATTGAATACGAAGACAACCGGCCCTCTTGACATGTTTCTACAGAAGCCCATGGGCTTAT
 TGTCTCTGCTTGTGAGGAAAGCAGATTTCCCAAGGCCACTGACCAGACTCTCATAGAAAAATTTGAAGA
 CAACCTGAAGTCACAGTACTTCTGGAGACCCAAAAGAATGGAACCTCAGTTTTGGCATTACCAGTATGCA
 GAAAAAGTCTCTATAGTCTAGTGGGTCTTGGCTAAAAACAGAGACACTTTCCCAACTGATATTGTGC
 TGCTTTGAGGTCATCAGAAAAAGTGAATTCGGCAACTTGTCAACCACCTCTGACAAAAACAGGTAA
 TCTGCCACTTTCTAAAATAAAAACATAGTAACTATCAGATGTGGAATTCAGAGAAATCCACAAACCTG
 ACCAAGGGTGAAGTACAGATGTACATGCCATGCCTGTGAAACCACCAATGTGAAAAACAAACCGTCT
 CATCCTATTTTAGATACTCCTTGATGGATTTATTATCTAAAATGGTAGTGGGCCAACCTCATTTTGTCCG
 TTGCATCAAACCAATAATGAGCGACAGGCAAGAAAGTATGACAAGGAGAAAGTTCTGCTCCAGCTGCGT
 TGCACAGGGATTTTGGAAACAGCAAGAATCGAAGGCTTGGTTATTACATCGGATACTTTCGCTAACT
 TTATAAAGAGGTATTACATTTCTGCTACAAATCGAGTGAAGAGCCCCAGTGAAGCCAGACAGTGTGC
 TGCCATTTTGGAAAAGGCTGGTCTTGATAACTGGGCTCTTGGAAAAACGAAAGTGTTCCTTAAATATTAT
 CATGTGGAACAGTTGAATCTAATGCGAAAAGGAAGTACCAACAAGCTTGTGTTTATTCAAGCCAGTGTCA
 GAGCATTCTTGGGTGCAAGAAGATACCAAGAATTCAGCAGAAGAGGAAGAGTAGTGTGTAATAATACA
 GTCAGCTGCAAGAAGACATCTCTTGCGAAAACATGAAAAAGAAACATCTAATGTGAAAAGTGCAGCAGGA
 AGGAGCATTGGGCTAAGGATCAGGAATTTGACTACAAGAAAAATTTTGAACCAAAAAGGGAACTTTTGG
 TGAAGAAACAGACAGAAAACGCAGTGCCTACTAATGAATCCAACACTTCAACTCCAAACAACAAAGAGAG
 CCCATCTGCTGGGAAGACAGCTCCCTTCCAGAGCAGAGTCAAAGGCCACCAATGTTGAGAGTAACAACAGA
 AGATACCATACTCAGAAGAAAATGAGCAATGTGTATGCAGAAGGACAGAATCAAGAGCTATATTTGTGG
 AGGACACTTGGGCAAGTAAGCCCAAGCAGAGTATGTGCAAGACCTGGAAAGAAAGCAGAAAGATGAG
 GAAAGAGGAGAAAAGGAGATGCTGTGATCCAGAGTTACTGTCAAGTGTACAGAGGGAAGCAACTTTGAA
 GAATCAAAGCAACATGTCTAGAAGGAAGGGAGACATGGGAAAGGACAAGCTGCCAGGGCTGTGGCTGA
 CTGAGGAGATTTACCTGAGAAAACTTTGGATCTACTCTTAGCCAAAAGTCAAGTCTATCAAATGCAGA
 TGGCAAAGAAAAAGAACATAAAGTATCTGTGGTTACCCAGAATGCACCGCTGGGCAACCTGGAGAGAGAC
 TATCACTTGTAGGGTTCCTTGGAGAAGAAGACTGGACCAGTGCCTCAGGCCAGGAAGAACAACAAGG
 CTGTGTCCATTCATAGCAAATACCAGAGTTCCAAGAAAAAGCAACAGCTGGGAAAGGACAGGCTGGCACC
 TCCCTTTAAGAAATCAAAGATCCTTTTCACTCGTCCACAGAAGTAGCAAAAACCACTCACAATGTCTATCCC
 TGTCGACAAAAGCAGGAGGGAGTCCATCATAGCAAGATGGTGGATGAGAGAGACTCAAAAATGGCTTCAA
 AAAAAGAAAGCGTGGGATTTAGCAATGTTTTCAAGACAGATATCAAAGTTATCTGAAGAGTATTTCTTCT
 GCAGAAAACTTGAATGAAATTTTGGCCAGCAACTGAAGCCATTTTATCTAGGTATCTATCGCCAT
 AAACCAATCAACAGACATGTTTCTACTACCAATACCTCTCAGGTGTCTTAAAGGGGAAGAACCAAAAA
 TACTGAGACCTCCAAGACGACCTCGAAACCAAAACATTAATAAACCTGAAGACTCCACATACTACTA
 TCTACTCCATAAGTCAACCAAGAAGAAAAACGGAGACCAGGAAAAGACAGTCAAGGGAAGTTATTAGGT
 TTGGAAGATTTCTATTATAAGGAATTTTGCCTACTCATTACGGACCAAGGCACATAGCTCTAATGCAA
 GAGAATGGAAGCACTGAAGGAACCCAGGCTCAACCCATTGAGAGTAATGAGAGGTGTTGGACCACCTC
 AGAGAATGAGAGCTGGAGGAAGAGAGGATTTAGCCAAACCTTATGACTACAGGAGGCTCTGCGCAA
 ACCTCCAGCGGACGCGCTGGTGCAGCAGTTG

ACGCGTACGCGGCCGCTCGAGCAGAACTCATCTCAGAAGAGGATCTGGCAGCAAATGATATCCTGGATT
 ACAAGGATGACGACGATAAGGTTTAA

Protein Sequence: >MR223862 representing NM_148413
 Red=Cloning site Green=Tags(s)

MQMTETFEMLPLIGKTIIFDNFPDSDTWEI IETIGKGTYGKVKVFNKKSGQKAAVKILDPIHDIDEI
 EAEYNILRTLSDHPNVRFYGIYFKDKINGDKLWLVLELCNGGSVTDLVKGLFKRGERMSEPIAYILH
 EALMGLQHLHSNKTIHRDVKGNILLTTEGGVKLVDFGVSAQLSSTRHRLNTSVGTPFWMAPEIACEQQ
 LDTTYDARCDTWSLGITAIELGDGPPLAELHPMRALFKIPRNPPLRQPELWSAEFNDFI SKCLTKDY
 EKRPYVSDLLKHKFITQIEGKDVILQKQLEFIDIHQCLGSTEKARHERIHTKKGNLNRSLISSLKDVDD
 LATLDVLDENTVSEHLEKCYSRDQIYIYVGDILIALNPFQSLGIYSTKLSRLYIGAKRTANPPHIFAMAD
 LGYQSMVTYNADQCIVISGESGAGKTESAHLVQQLTVLGKANNRTLQEKILQMNNLVEAFGNACTIIND
 NSSRFGKYLEMKFTSSGAVVGAQISEYLLEKSRVIHQAI GEKNFHFYIYAGLAEKKLALYKLPENKP
 PRYLQNDNLRVQDMNNSFYKSQYELIEQC FVKIGFTMEQLGSVYVLAAILNVGNIEFSSVATEYQMD
 KSYICNHTALENSASLLCIQADELQEAL TSHCVVTRGETIIRPNTVEKAADVRDAMAKTL YGRLFSWIVN
 CINSLLKHDTSPSGDEELNIGILDIFGFENFKRNSFEQLCINIANEQIYQYFNQHVFAWEQNEYLNEVDV
 ARVIEYEDNRPLLDMLQKPMGLLSLLDEESRFPKATDQTLIEKFEDNLKSQYFWRPKRMEL SFGIHHYA
 GKVLVYASGFLAKNRDTPFDIVLLRSEN SVIRQLVNHPLTKTGNLPLSKTKNI VNYQMWNSEKSTNL
 TKGETRDVTCACETTIVKTQT VSSYFRYSLMDLLSKMVVQPHFVRCIKPNNERQARKYDKEKVL LQLR
 CTGILETARIRRLGYSHRILFANFIKRYIILCYKSSEPPVSPDCAAILEKAGLDN WALGKTKVFLKYY
 HVEQLNLMRKEATNKLVL IQASVRAFLGARRYQELQQRKSSAVIIQSAARRHLLRKHGKETS NVKSAAG
 RSIRAKDQEFDYKKNFETKRESFVKKQTENAVPTNESNTSTPNKESPSAGKTAPFRAESKATNVESNNR
 RYHTQKKMSNVYAEGQNQEL YIVEDTWA EVSPRQKYVQDLEESRKRMRKEEKDAVIQSYCQWYTEGSNFE
 ESKATCLEGRETWERTSC PGLWLTEE IYLRKTLDP TLSQKSVYQNADGKEKEHKVSVVTQNAPLGNLERD
 YHLLGFLGEEDTGPVPQAQEEHKAVSIH SKYQSSKKKQQLGKDR LAPPFKNQKILSSSTEVAKTTHNVYP
 CPTKQEGVHHSKMVDERDSKMASKKEAWDLAMF SRQISKLSEYF I LQKNLNEIILAQQLKPFYLG IYRH
 KPINRHVSTHQYLSGVSKGEEP KILRPPRRPRKPKTLN NPEDSTYYYLLHKSTQE EKRRPGKDSQ GKLLG
 LEDFYKFLP THYGPKAHSSNAREWKALKEPQAQPIESNERCWTTS ENESLEEERI SANPYDYRRLLRK
 TSQRQLVQQL

TRTRPLEQKLISEEDLAANDILDYKDDDDKV

Chromatograms: https://cdn.origene.com/chromatograms/mm9008_g09.zip

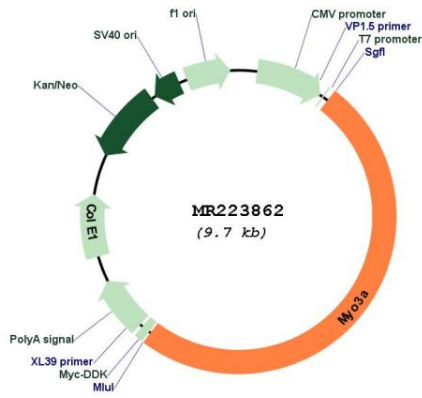
Restriction Sites: SgfI-MluI

Cloning Scheme:



ACCN:	NM_148413
ORF Size:	4863 bp
OTI Disclaimer:	The molecular sequence of this clone aligns with the gene accession number as a point of reference only. However, individual transcript sequences of the same gene can differ through naturally occurring variations (e.g. polymorphisms), each with its own valid existence. This clone is substantially in agreement with the reference, but a complete review of all prevailing variants is recommended prior to use. More info
OTI Annotation:	This clone was engineered to express the complete ORF with an expression tag. Expression varies depending on the nature of the gene.
Components:	The ORF clone is ion-exchange column purified and shipped in a 2D barcoded Matrix tube containing 10ug of transfection-ready, dried plasmid DNA (reconstitute with 100 ul of water).
Reconstitution Method:	<ol style="list-style-type: none">1. Centrifuge at 5,000xg for 5min.2. Carefully open the tube and add 100ul of sterile water to dissolve the DNA.3. Close the tube and incubate for 10 minutes at room temperature.4. Briefly vortex the tube and then do a quick spin (less than 5000xg) to concentrate the liquid at the bottom.5. Store the suspended plasmid at -20°C. The DNA is stable for at least one year from date of shipping when stored at -20°C.
RefSeq:	NM_148413.3 , NP_680779.3
RefSeq Size:	5082 bp
RefSeq ORF:	4866 bp
Locus ID:	667663
Cytogenetics:	2 A3
MW:	186.4 kDa

Product images:



Circular map for MR223862