

Product datasheet for MR223820

Baz1b (NM_011714) Mouse Tagged ORF Clone

Product data:

Product Type: Expression Plasmids
Product Name: Baz1b (NM_011714) Mouse Tagged ORF Clone
Tag: Myc-DDK
Symbol: Baz1b
Synonyms: C87820; Wbscr9; WSTF
Vector: pCMV6-Entry (PS100001)
E. coli Selection: Kanamycin (25 ug/mL)
Cell Selection: Neomycin
ORF Nucleotide Sequence: >MR223820 representing NM_011714
Red=Cloning site Blue=ORF Green=Tags(s)

TTTTGTAATACGACTCACTATAGGGCGCCGGAATTCGTCGACTGGATCCGGTACCGAGGAGATCTGCC
GCCCGATCGCC

ATGGCGCCGCTGCTGGGCGCAAGCCCTCCCGCTGGTGAACCCTGCCCGGAGAGGAGCCGCTTTCA
 CCATCCCACACTCAGGAGCCCTCCGCACCCGGAAGAGTATGAAGCCCGCTGGAAAGATACAGTGA
 ACGCATTGGACGTGTAAGAGTACAGGAAGCAGTCACTAACACACAAGGAGCCCTGGGAAGAGGAACAG
 GAAGTTGCTGAGCTTTTGAAGGAAGAGTTTCTAACTGGTATGAGAAGCTGTTTTGGAAATGGTTCACC
 ATAACACAGCCTCCTTAGAGAAGCTTGTGACTCTGCCTGGTTAGAGATCATGACCAAATATGCCGTGGG
 GGAAGAGTGTGACTTTGAGGTTGGGAAGGAGAAAATGCTCAAGGTGAAGATAGTGAAGATTCATCCTTTG
 GAGAAAGTTGATGAAGAAGCTGTTGAGAAGAAATCTGATGGGGCCTGTGATTCTCCGTCAAGTGACAAA
 AAAATTCAGTCAAAATGGCTCAGGACCTCCAGAAGAAGGAGACAGTAGTCAAAGAGGATGAAGGCAGGAG
 AGAGAGTATTAATGACAGAGCGGTAGGTCTCCACGAAAATTCCTACTTCATTAAGGAGGAGAAAGA
 AAATGGGCTCCTCAAAAATTTGCCTCAGAAAATGATGTGAAGCTACAAAATGAAGATAAGATCATCA
 GCAATGTGCCAGCAGACAGCTTGATTGCAACGGAGAGACCACCAATAAGGAGATACTTCGATACTTTAT
 TCGGCATAATGCCTTACGTGCTGCTGTTGAGTGAAGTGCACCTTGGGTGGTGAAGATGAATTGGTGAAG
 AAATATCCCTGCCTAGCAAGTTCAGTACTTTTTACTTGACCCATATAAGTATATGACTCTCAATCCCT
 CTACCAAGAGGAGGAATACTGGATCTCCAGACAGGAAGCCCTCAAAGAAACCTAAGAGAGACAGTCTTTC
 TCTGAGTCCCACTAAACCCTAAGCTGTGGTGTGATGTGCACTTGGAGAAGTCGTTAAATGGCCACCA
 CTCAAAGTAAAGAACTCAAAGAATTCAGTCTCCGGAAGAACATTTGGAAGGGGTGATGAAAATATGT
 CCCCCAACAAACAAGCTACACAGCTTCCACATTCCTAAGAAAGGCCAGCCGCAAGAAGCCAGGGAA
 GCACAGTGACAACTCTGAAGGCCAAGGCAGAGGCAAAGGCATCCTGAATGGACAGAAGTCCACAGGC
 AACTCAAATCACCCAGCAAGTGTGTAAGACTCCTAAGACAAAATGAAGCAGATGACTTTGTTGGATA
 TGGCCAAAGGGACTCAGAAGATGACCCGACCCACGGAGTTCTGGGGGTGTGCCAAGGTCTTCTGGTAA
 ACCTCACAAACACCTGCCTCCTGCAGCTCTGCATCTGATTGCCTATTACAAGAAAATAAAGACAAGAG
 GACAAGAAGAGTCTGTCTGTGTTATCTCCAAAACAGCACGTCTCCTCTCCAATGAAGATAGAGCCC



[View online »](#)

GTCTTCCAGAAGAGCTCCGGGCTCTTGTCCAGAAACGCTATGAGCTCCTGGAACATAAAAAGAGGTGGG
CTCTATGTCTGAAGAGCAACGGAAAGAATATTTGAAAAGAAAACGACAGGAGCTAAAGGAGAGGTTGCGG
GAAAAGCCAAAGAACGGAGAGAGAGAGAAATGCTGGAGAGGTTAGAAAAGCAGAAGCGATTTGAGGACC
AGGAGTTAGGTGGCAGAAACCTCCCAGCATTAGGCTGGTAGATACCCCTGAGGGGCTCCCCAACTCT
TTTTGGGATGTGGCCCTGGTGGTGGAGTTCCTGAGCTGTTACTCTGGGTTGCTCTTGCCGATGCTCAG
TACCCTATCACTGCTGTGTCCCTAATGGAAGCCTTGAGTGCAGATAAAGTGGTTTTTTGTACTTGAACA
GAGTGTGGTCACTCTGCTACAGACCTTACTTCAGGATGAAATTGCAGAAGACTATGGAGAACTGGGAAT
GAAGCTGTCAGAAATCCCCTCACCCCTGATTCTGTCTCAGAGCTGGTCCGGCTCTGCTTGCGCAGGTGT
GATGTCCAGGAGGACAGCGAGGGCTCAGAAACAGATGACAATAAAGATTCCACACCAATTTGAGGATAATG
AGGTGCAAGACGAATTTCTAGAGAAGCTGGAGACATCAGAATTCTTTGAGCTGACCTCAGAGGAGAAGCT
ACGGATATTGACAGCTCTTTGCCACCGTATCCTCATGACATACTCTGTGCAAGACCACATGGAGACAAGA
CAGCAGGTGTCTGCAGAGTTGTGGAAGGAGCGGCTTGTGTGCTGAAGGAGGAGAATGATAAGAAGAGAG
CAGAGAAGCAAAAGCGGAAGGAGATGGAAGCCAGAAATAAAGAAAATGGCAAAGAGGAGAATGTGCTAGG
CAAAGTGGACAGGAAAAAAGAAATGTGAAGATTGAACAGCAAGTAGAAGTGAAGCAGATGACATGATC
AGTGTGTCAAGAGCAGAAGGCTGCTTAGCATGCAAGCTAAGAGGAAGCGGAAATCCAGGAGAGAGAAA
CAAAGTGAGATTGGAACGGGAAGCTGAAGAGGAACGAATGCGGAAACACAAGGCTGCTGCCGAGAAGGC
TTTCCAGGAAGGGATTGCCAAGGCAAACTTGTACTGCGCAGGACACCTATTGGTACAGACCCGAACCAT
AACAGATACTGGCTCTTCTCAAACGAAGTCCCAGGATTATTCAATTGAAAAGGGCTGGGTCCATAATAGCA
TTGACTACCGTTTTAAGCATCACCGCAAAGACCACAGCAATTTACCTGATGATGACTACTGCTCCTCGAAG
TAAGAAAGCAAACCTAGGCAAGAATGCAAGTGTGAATGCGCACCATGGACCAGCACTAGAAGCTGTGGAG
ACCACTGTGCCAAGCAAGGACAAAATTTATGGTTCCTGTGTGACAGTCAAGAGGAAATGGATGAGCTGC
TGAGTTGCCTCCATCCTCAGGGAATCAGGGAAGTCACTTAAAGAGAGGCTGGAGAAGAGATACCAAGA
AATTACTATTCTATTTATCTGGCTCGGAAGCAAATTTGGGTCTAAAATCTTGTGACGGCAACCGGAG
CTCTTAAACTTCTGAGGAGTATCTTATTGAAGTGGCAACGAGGCTGCAGAAAGGAGACTTGGCTACA
TGGAGGGAACATCTGAGTTTGGGCCGGGTCACTTCTTAGAGAACTGAAGGATTTTGGTGAATGCGT
CATTGCCCTTCAAGCCAGTGTCTATAAGAAATTTCTGCAAGGATTTATGGCGCTAAGCAGAAGAAGCGG
AAACTCCAAGTGAAGATTCCACAAAGTCCGAGGAAGTAGATGAAGAGAAAAAGATGGTAGAGGAAGCAA
AGGTTGCCTCTGCACTGGAAAAATGAAAAACAGCAATCCGTGAAGCACAGACCTTTTCCAGGATGATGT
TCTACTGGGATGCTCGATGCATGTATCAAGTGGGACATGTCAGCAGAAAACGCTAGGTGCAAAGTTTGT
CGAAAGAAAGGTGAGGATGACAAGCTGATCCTGTGTGACGAGTGAATAAAGCCTTCCACCTGTTCTGTC
TGAGGCCGGCCCTTATGAAGTACCAGATGGCGAGTGGCAGTGTCCAGCTTGCCAGCCTCCTACTGCCAG
ACGCAATTCCTGTCAGGAATTAACACTGAAGAGTCTACCTCTGAGGGCAGCGAGGGTATGAGAGCGGT
GAAGAGGAAGAGGAAGAAGAGGAGGAGGAGGAAGAAGAAGAGGATTATGAAGTGGCTGGCTTGGCGCTGA
GACCTCGGAAGACCATTGAGGCAAGCAGAGTGTATCCCTGCAGCAAGACCAGGCCGACCCGGGTAA
GAAGTCACATCCTGCCAGAAGGTACGGCCAAAGGATGACCCAGAGGTCGATGATCTGGTACTTCAGACC
AAGCGTATCTCGAGAAGGCAGAGTCTGGAGCTACAAAAGTGTGAGGATATCCTTCAAAACTGGTGAAGT
ACCGCTTACGCTGGCCCTTCCGGGAGCCTGTGACCAGAGACGAGGCTGAGGACTACTATGATGTGATCGA
GCACCCCATGGACTTCCAGACCATACAGAACAATGCTCATGCGGAACTACCGATCTGTGCAGGAGTTC
CTCACTGACATGAAGCAAGTGTGGCAATGCCGAGCTATAACTGCCGCGCAGCCACGTGCTGAGTT
GCATGGAGAAGACAGAGCAGTGTCTGTGGCTCTGCTGCAAAAACACTCCCAGGACCCCTACGTGCG
CAGGAAACGCAGGAAGTTTCTGATAGGCTCGCTGATGATGAAGGGACAGTGAAGTCTGTTGGA
CAGTCCAGGGGACGGAGACAGAAGAAG

ACGCGTACGCGGCCGCTCGAGCAGAACTCATCTCAGAAGAGGATCTGGCAGCAATGATATCCTGGATT
ACAAGGATGACGACGATAAGGTTTAA

Protein Sequence: >MR223820 representing NM_011714
 Red=Cloning site Green=Tags(s)

```

MAPLLGRKPFPLVKPLPGEEPLFTIPHTQEAFTREEYEARELERYSERIWTCKSTGSSQLTHKEAWEEEQ
EVAELLKEEFPNWEKLVLEMVHHTASLEKLVDSAWLEIMTKYAVGEECDFEVGKEKMLKVKIVKIHPL
EKVDEEAVEKSDGACDSSDKENSSQMAQDLQKKETVVKEDGRRESINDRARRSPRKLPTSLKKGGER
KWAPPKFLPHKYDVKLQNEDKIISNVPADSLIRTERPPNKEILRYFIRHNALRAGTGENAPWVVEDELVK
KYSLPSKFSDFLLDPYKMYMLNPSTKRRNTGSPDRKPSKPKRDSSSLSSPLNPKLWCHVHLEKSLNGPP
LKVKNSKNSKSPEEHLEGVMKIMSPNKKLHSHFHPKKGPAKKPGKHSKPLKAKGRGKILNGQKSTG
NSKSPSKCVKTPKTKMKQMTLLDMAKGTQKMTTRPRSSGGVPRSSGKPHKHLPPAALHLIAYYKENDKE
DKKSALSCVISKARLLSNEDRARLPEELRALVQKRYELLEHKKRWASMSEEQRKEYLKKKRQELKERLR
EKAKERREREMLERLEKQKRFEDQELGGRNLPFRLVDTPEGLPNTLFGDVALVVEFLSCYSGLLLPDAQ
YPITAVSLMEALSADKGGFLYLNRVLLVILLQTLQDEIAEDYGELGMKLEIPLTLHSVSELVRLCLRRC
DVQEDSEGSETDDNKDSTPFEDNEVQDEFLEKLETSEFFELTSEEKLRILTALCHRILMYSVQDHMETR
QQVSAELWKERLAVLKEENDKKRAEKQKRKEMEARNKENGKEENVLGKVDKKEIVKIEQQVEVEADDMI
SAVKSRLLSMQAKRKREIQERETKVLREAEERMRKHAAAEKAFQEGIAKAKLVLRRTPIGTRDNH
NRYWLFNSNEVPGLFIEKGWVHNSIDYRFKHHRKDHSNLPDDDYCPRSKKANLGNASVNAHHPALEAVE
TTPVKQGNLWFLCDSQKELDELLSCLHPQGIRESQLKERLEKRYQEITHSIYLARKPNLGLKSCDGNQE
LLNFLRSDLIEVATRLQKGLGYMEGTSEFEARVISLEKLDKDFGECVIALQASVIKFLQGFMAPKQKKR
KLQSESDTKSEEVDDEKMMVEEAKVASALEKWKTAIREAQTFSRMHVLLGMLDACIKWMSAENARCKVC
RKKGEDDKLILCDECNKAFHLFCLRPALYVDPGEWQCPACQPPTARRNSRGRNYTEESTSEGSEGDSE
EEEEEEEEEEEEEDYEAGLRRLRPRKTRIRGKQSVIPAARPGRPKSHPARSRPKDDPEVDDLVLQT
KRI SRRQSL ELQKCEDILHKL VKYRFSWPFREPVT RDEAEDYDVEIHPMDFQTIQNKCCSGNYRSVQEF
LTDMKQVFANAELYNCRGSHVLSCEMKE TEQCLLALLQKHLPGHPYVRRKRKFPDRLADDEGSDSES
VGSQRGRRQKK
  
```

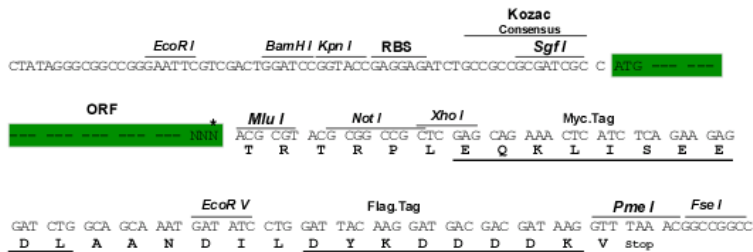
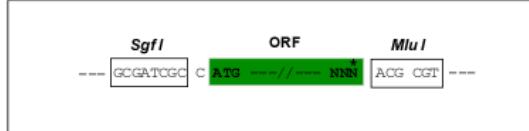
TRTRPLEQKLISEEDLAANDILDYKDDDDKV

Restriction Sites:

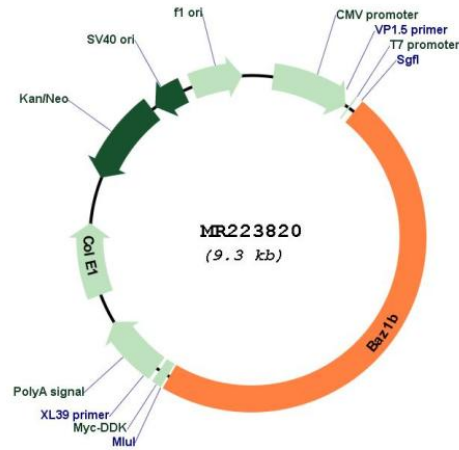
SgfI-MluI

Cloning Scheme:

Cloning sites used for ORF Shuttling:



* The last codon before the Stop codon of the ORF

Plasmid Map:


ACCN: NM_011714

ORF Size: 4437 bp

OTI Disclaimer: The molecular sequence of this clone aligns with the gene accession number as a point of reference only. However, individual transcript sequences of the same gene can differ through naturally occurring variations (e.g. polymorphisms), each with its own valid existence. This clone is substantially in agreement with the reference, but a complete review of all prevailing variants is recommended prior to use. [More info](#)

OTI Annotation: This clone was engineered to express the complete ORF with an expression tag. Expression varies depending on the nature of the gene.

Components: The ORF clone is ion-exchange column purified and shipped in a 2D barcoded Matrix tube containing 10ug of transfection-ready, dried plasmid DNA (reconstitute with 100 ul of water).

Reconstitution Method:

1. Centrifuge at 5,000xg for 5min.
2. Carefully open the tube and add 100ul of sterile water to dissolve the DNA.
3. Close the tube and incubate for 10 minutes at room temperature.
4. Briefly vortex the tube and then do a quick spin (less than 5000xg) to concentrate the liquid at the bottom.
5. Store the suspended plasmid at -20°C. The DNA is stable for at least one year from date of shipping when stored at -20°C.

RefSeq: [NM_011714.2](#), [NP_035844.2](#)

RefSeq Size: 6446 bp

RefSeq ORF: 4440 bp

Locus ID: 22385

UniProt ID: [Q9Z277](#)

Cytogenetics: 5 G2

MW: 171.1 kDa

Gene Summary: Atypical tyrosine-protein kinase that plays a central role in chromatin remodeling and acts as a transcription regulator. Involved in DNA damage response by phosphorylating 'Tyr-142' of histone H2AX (H2AXY142ph). H2AXY142ph plays a central role in DNA repair and acts as a mark that distinguishes between apoptotic and repair responses to genotoxic stress. Essential component of the WICH complex, a chromatin remodeling complex that mobilizes nucleosomes and reconfigures irregular chromatin to a regular nucleosomal array structure. The WICH complex regulates the transcription of various genes, has a role in RNA polymerase I and RNA polymerase III transcription, mediates the histone H2AX phosphorylation at 'Tyr-142', and is involved in the maintenance of chromatin structures during DNA replication processes. In the complex, it mediates the recruitment of the WICH complex to replication foci during DNA replication.[UniProtKB/Swiss-Prot Function]