

Product datasheet for MR223743

Ncoa2 (NM_008678) Mouse Tagged ORF Clone

Product data:

Product Type:	Expression Plasmids
Product Name:	Ncoa2 (NM_008678) Mouse Tagged ORF Clone
Tag:	Myc-DDK
Symbol:	Ncoa2
Synonyms:	bHLHe75; D1Ertd433e; GRIP-1; Grip1; KAT13C; NCoA-2; SRC-2; TIF2
Mammalian Cell Selection:	Neomycin
Vector:	pCMV6-Entry (PS100001)
E. coli Selection:	Kanamycin (25 ug/mL)
ORF Nucleotide Sequence:	>MR223743 representing NM_008678 Red=Cloning site Blue=ORF Green=Tags(s)

TTTTGTAATACGACTCACTATAGGGCGGCCGGAATTCGTCGACTGGATCCGGTACCGAGGAGATCTGCC
GCC**CGATCGCC**

ATGAGTGGGATGGGAGAAAAACCTCTGACCCGTCCAGGGCAGAGACCAGAAAACGCAAGGAATGTCCCG
ACCAGCTCGGACCCAGCCCCAAAAGGAGCACTGAGAAACGGAACCGGAGCAGGAGAATAAGTACATAGA
GGAGCTGGCCGAGCTGATCTTCGCAAATTTAATGATATTGACAACCTCAACTTCAAACCTGACAAATGT
GCCATCTAAAAGAACTGTGAAGCAGATCCGCCAGATCAAAGAGCAAGAGAAAGCAGCAGCTGCCAACA
TAGATGAAGTGCAGAAGTCAGATGTGTCGTCCACGGGGCAGGGTGTGATCGACAAGGATGCACTGGGGCC
CATGATGCTTGAGGCCCTCGATGGGTTCTTCTCGTTGTGAACCTGGAAGGCAGTGTGGTGTTCGTGTCA
GAGAATGTGACACAGTATCTACGGTATAACCAAGAAGAGCTGATGAACAAGAGTGTCTACAGCATCTGC
ATGTCCGGGACCACACTGAATTTGTCAAGAACCTGCTGCCAAAGTCCATGGTGAATGGAGGATCCTGGTC
TGGAGAACCTCCCAGGCGGAGCAGCCATACCTTCAACTGTGCGATGCTGGTGAAGCCTTTGCCAGATTCA
GAAGAGGAAGGCCATGATAGCCAGGAAGCCATCAGAAATACGAGGCGATGCAGTGTTCGCTGTGTCTC
AGCCCAAGTCCATCAAAGAGGAAGGCGAAGATTTGAGTCTGCTTGTGTTGTTGTGGCACGAAGAGTCCC
CATGAAGGAAAGACCAACTCTTCCCTCATCAGAAAGCTTTACCACCCGCCAGGACCTCCAAGGCAAGATC
ACTTCACTGGACACTAGCACCATGAGAGCCGCCATGAAGCCGGCTGGGAAGATCTGGTAAAGAAGATGCA
TTCAGAAGTTCACACACAGCATGAAGGGGAGTCTCTATCATATGCCAAGAGGCATCACCATGAAGTTCT
GAGACAAGGGTTGGCGTTCAGTCAGATCTATCGTTTTTCTTTGTCTGATGGCACTCTCGTTGCTGCACAA
ACCAAGAGCAAATCATCCGTTCTCAGACTACTAATGAGCCTCAGCTTGTAAATATCTTTACACATGCTTC
ACAGAGAGCAGAAATGTATGTGAATGAATCCGGATCTGACTGGACAAGCGATGGGGAAGCCATTGAATCC
AATTAGCTCTAGCAGCCCTGCCACCAGGCCCTGTGCACTGGGAACCCAGGTGAGGACATGACCCTCGGT
AGCAATATAAATTTCCCATGAATGGCCAAAGGAACAAATGGGCATGCCTATGGGCAGGTTTGGTGGTT
CTGGGGGCATGAACCATGTGTCAGGCATGCAAGCAACCACTCCTCAGGGTAGTAATGCACTCAAAT
GAACAGTCCCTCGAAAGCAGCCCCGGCATGAACCCGGGGAAGCCAGCTCCGTGCTCTCCCAAGGCAG



[View online »](#)

CGCATGAGCCCCGGCTGGCTGGCAGTCCCTCGCATCCCACCCAGTCAGTTTTCCCCTGCAGGAAGCTTGC
ATTCCTGTGGGAGTTTGCAGCAGCACAGGAAATAGCCATAGTTATACCAACAGTTCCTCAATGCACT
GCAAGCCCTCAGCGAGGGCCATGGGGTCTCACTCGGGTCTCGCTGGCTTACCAGGACCTAAAAATGGGC
AATTTGCAAACTCCCAGTTAATATGAATCCTCCCCACTCAGCAAGATGGGAAGCTTGGACTCCAAAG
ACTGTTTTGGACTTTATGGGGAGCCCTCAGAAGGTACAACGGACAAGCAGAGGGCCAGCTGCCATCTGA
AGAACAAAAGGGCCCAATGATTCCAGCATGCCCCAGGCGCCAGCGGGACAGGGCTGAGGGACACAGC
CGGCTGCATGACAGCAAAGGGCAGACCAAACCTCTGCAGCTGCTGACCACCAAGTCCGACCAGATGGAGC
CTTCACCCTTGCCAGCTCCTTGTGGACACAAACAAGGACTCAACAGGGAGCTTGCCTGGGCCTGGGTC
CACGCATGGCACCTCGCTCAAGGAGAAGCATAAAGATTTTGCACAGACTCTTACAGGACAGCAGTTCCTT
GTGGACTTGCCAAAGCTGACAGCAGAAGCCACAGGCAAAGAGCTGAGCCAGGAGTCCAGCAGCACAGCTC
CTGGGTCGGAAGTACTGTCAAACAGGAGCCAGCGAGCCCAAGAAGAAAGAGAAATGCACTACTGCGCTA
TTTGTCTGACAAAGATGATACTAAAGATATTGGTTTACCGAAATAACCCCCAACTCGAGCGACTGGAC
AGTAAGACAGATCCTGCCAGTAACACAAAGTTAATTGCTATGAAAAGTGAAGGAGGAGGTGAGCTTTG
AGCCAGTGACCAGCTGGCAGCGAGCTGGACAACCTGGAAGAGATTTTGGATGATTTGCAGAACAGTCA
GTTACCACAGCTTTCCAGACACAAGGCCAGGAGCTCCTACTGGGTGAGTTGACAAGCAAGCCATCATC
AATGACCTCATGCAACTCACAGCTGACAGCAGTCCCGTCCACCTGCCGGAGCCAGAAGGCAGCACTGC
GCATGTCACAGAGCACTTTAATAACCCACGACCAGGGCAACTGGGCAGGTTATTGCCAAACCAGAACTT
ACCACTTGACATCACTTTGCAAAGCCAACTGGTGTGGACCTTTCCACCAATCAGAAACAGTAGCCCC
TACTCAGTGATACCTCAGCCAGGAATGATGGGTAAACCAAGGGATGCTAGGAAGCCAAGGAAACTTAGGGA
ACAATAGCACAGGAATGATTGGCAGCAGCACTCCCGGCCAGCATGCCTTCTGGGAATGGGCACCACA
GAGTCCAGCTGTGAGAGTCACTTGTGCTGCTACCACTGGTCCATGAACCGACCAGTCCAAGGAGGCATG
ATTCGGAACCCAAACAGCCAGCATCCCCATGCGAGCCAACAGCCAGCCTGGCCAAAGACAGATGCTTCAGT
CTCAGGTCAATGAACATAGGCCCTTCTGAGTTAGAGATGAACATGGGAGGACCTCAGTATAATCAACAGCA
GGCCCCCTCGAACCAAACTGCCCGTGGCTGAGAGCATCCTGCCTATAGACCAGGCATCGTTTGGCAGC
CAGAACAGGCAGCCCTTGGCAGCTCCCTGATGACCTGCTGTGTCCACATCCTGCAGCAGAGTCCGCAA
GCGATGAGGGCGCTCTTCTTGACCAGCTGTATCTGGCCTTGCGGAACCTCGATGGCCTTGGAGAGATTGA
TAGAGCTCTGGGATACCAGAACTGGTCAGCCAGAGCCAAGCTGTGGATGCAGAGCAGTTCTCAAGTCAG
GAGTCCAGCATAATGCTGGAGCAGAAGCCCCCGTTTTCCACAGCAGTACGCATCTCAGGCACAAATGG
CCCAGGGTGGCTATAATCCCATGCAAGATCCAAACTTTACACCATGGGACAGCGCCAAATTACACCAC
ACTCCGTATGCAGCCACGGCCAGGCCTCAGGCCACAGGCATTGTGCAGAACAGCCAAACCAACTGAGA
CTTCAGCTTCAGCACCGCTCCAAGCACAGCAGAATCGCCAGCCGCTTATGAATCAGATCAGCAGTGGT
CCAATGTGAACCTGACTCTGAGGCTGGAGTGGCCACTCAGGCTCCTATTAATGCACAGATGCTGGCCCA
GAGGCAGAGGAAATCCTCAACCAACATCTTGGCAGAGACAGATGCAGCAGCAGGTGCAGCAGCGGACT
TTGATGATGAGAGGACAGGGCTTGAATGTGACCCCAAGCATGGTGGCTCCCGCTGGCCTACCAGCAGCCA
TGAGCAATCCCCGGATCCCCAGGCCAATGCCAGCAGTTCCTATTTCTCCGAACTACGGAAATAAGTCA
ACAACCTGATCCTGGCTTACTGGGGCTACAACCCCCAGAGTCTCTAATGTCTCCCCGGATGGCAGAT
ACTCAGAGTCCCATGATGCAGCAGTCTCAAGCCAAACCCAGCCTACCAGCCACCTCAGACATGAATGGAT
GGGCACAGGGGAGCATGGGTGGAACAGCATGTTCTCACAGCAGTCCCCACCACACTTTGGGCAACAAGC
AAACACCAGCATGTATAGTAACAACATGAACATCAGTGTGTCGATGGCAACCAACAGGGTGGCTTGAGC
AGCATGAACCAGATGACAGGCCAGATGAGCATGACCTCAGTACCTCCGTGCCTACGTGAGGACTGCCCT
CCATGGGTCCCGAGCAGGTCAATGACCCTGCTCTGAGGGGAGGCAACCTTTTCCAAACCAACTGCCTGG
AATGGACATGATCAAGCAGGAGGGAGATGCATCTCGAAATACTGC

ACGCGTACGCGGCCGCTCGAGCAGAACTCATCTCAGAAGAGGATCTGGCAGCAATGATATCCTGGATT
ACAAGGATGACGACGATAAGGTTTAA

Protein Sequence: >MR223743 representing NM_008678
 Red=Cloning site Green=Tags(s)

```
MSGMGENTSDPsRAETRKRKECPDQLGSPKRSTEKRNREQENKYIEELAEIFANFNIDNFNFKPKDC
AILKETVKQIRQIKEQEKAANIDEVQKSDVSSSTGGVIDKDALGPMLEALDGGFFVVNLEGSVVFVS
ENVTYQLRYNQEELMNKSVYSILHVGDHTEFVKNLLPKSMVNGGSWSGEPpRRSSHTFNCRMLVKPLPDS
EEEGHDSQEAHQKYEAMQCFAVSQPKSIKEEGEDLQSLICVARRVPMKERPTLPSESF TTRQDLQGI
TSLDTSTMRAAMKPGWEDLVRRCIQKFHTQHEGESLSYAKRHHHEVLRQGLAFSQUIYRFSLSDGTLVAAQ
TKSKLIRSQT TNEPQLVLSLHMLHREQNYCVMNPDLTGQAMGKPLNPISSSSPAHQALCSGNPGQDMTLG
SNINFPMPNGPKEQMMPMGRFGGSGGMNHVSGMQATTPQGSNYALKMNSPSQSSPGMNPQASSVLSPRQ
RMSPGVAGSPRIPPSQFSPAGSLHSPVGVCSSTGNSHSYTNSSLNALQALSEHGVSLSGSLASPD LKMG
NLQNSPVNMNPPPLSKMGLSDSKDCFLYGEPESEGTGQAEASCHPEEQKPNDSMPQAASGDRAEGHS
RLHDSKQGTKLLQLLTTKSDQMEPSLPSLSDTNKDGSLPGPGSTHGTSLKEKHKILHRLLDQSSSP
VDLAKLTAEATGKELSQESSSTAPGSEVTVKQEPASPKKENALLRYLLDKDDTKDIGLEITPKLERLD
SKTDPASNTKLIAMKTVKEEVSEFSPDQPGSELNLEEILDDLQNSQLPQLFPDTRPGAPTSVDKQAI
NDLMQLTADSSPVPAGAQKAALRMSQSTFNNPRPQLGRLLPNQNLPLDITLQSPGTGAGPFPIRNSSP
YSVIPQPGMMGNQGLGSGQNLGNNSTGMIGSSTSRPSMPSGEWAPQSPAVRVTCAATTGAMNRPVQGGM
IRNPTASIPMRANSQPGQRQLQSVMNIGPSELEMNMGPPQYNQQAPPNQTAPWPESILPIDQASFAS
QNRQPFSSPDDLCPHPAAESPSDEGALLDQYLALRNFDGLEEIDRALGIPELVSQSQA VDAEQFSSQ
ESSIMLEQKPPVFPQYASQAQMAQGGYNMQDPNFHTMGQRPNYTLRMQPRPGLRPTGIVQNQPNQLR
LQLQHRLQAQQNRQPLMNQISSVSNVNLTLRPGVPTQAPINAQMLAQRQREILNQHLRQRMQQQVQRT
LMMRGQLNVTSPMVAPAGLPAAMSNRIPQANAQQFPFPNYGISOQDPDGTGATTPQSPLMSPRMAH
TQSPMMQSQANPAYQPTSDMNGWAQSGMGGNSMF SQSPPHFGQQANTSMYSNNMNI SVSMATNTGGLS
SMNQMTGQMSMTSVTSVPTSGLPSMGPEQVNDPALRGGNLPFNQLPGMDMIKQEGDASRKYC
```

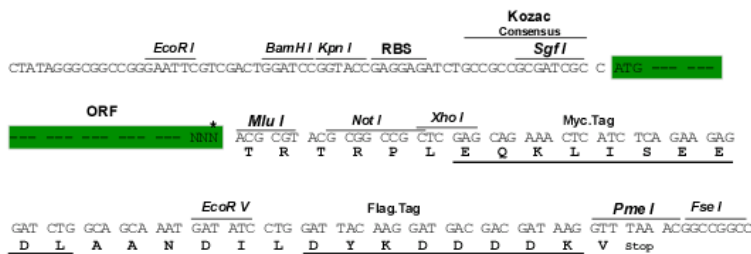
TRTRPLEQKLISEEDLAANDILDYKDDDDKV

Chromatograms: https://cdn.origene.com/chromatograms/ja1861_f11.zip

Restriction Sites: SgfI-MluI

Cloning Scheme:

Cloning sites used for ORF Shuttling:



* The last codon before the Stop codon of the ORF

ACCN: NM_008678

ORF Size: 4386 bp

OTI Disclaimer: Due to the inherent nature of this plasmid, standard methods to replicate additional amounts of DNA in E. coli are highly likely to result in mutations and/or rearrangements. Therefore, OriGene does not guarantee the capability to replicate this plasmid DNA. Additional amounts of DNA can be purchased from OriGene with batch-specific, full-sequence verification at a reduced cost. Please contact our customer care team at custsupport@origene.com or by calling 301.340.3188 option 3 for pricing and delivery.

The molecular sequence of this clone aligns with the gene accession number as a point of reference only. However, individual transcript sequences of the same gene can differ through naturally occurring variations (e.g. polymorphisms), each with its own valid existence. This clone is substantially in agreement with the reference, but a complete review of all prevailing variants is recommended prior to use. [More info](#)

OTI Annotation: This clone was engineered to express the complete ORF with an expression tag. Expression varies depending on the nature of the gene.

Components: The ORF clone is ion-exchange column purified and shipped in a 2D barcoded Matrix tube containing 10ug of transfection-ready, dried plasmid DNA (reconstitute with 100 ul of water).

Reconstitution Method:

1. Centrifuge at 5,000xg for 5min.
2. Carefully open the tube and add 100ul of sterile water to dissolve the DNA.
3. Close the tube and incubate for 10 minutes at room temperature.
4. Briefly vortex the tube and then do a quick spin (less than 5000xg) to concentrate the liquid at the bottom.
5. Store the suspended plasmid at -20°C. The DNA is stable for at least one year from date of shipping when stored at -20°C.

RefSeq: [NM_008678.3](#), [NP_032704.2](#)

RefSeq Size: 8213 bp

RefSeq ORF: 4389 bp

Locus ID: 17978

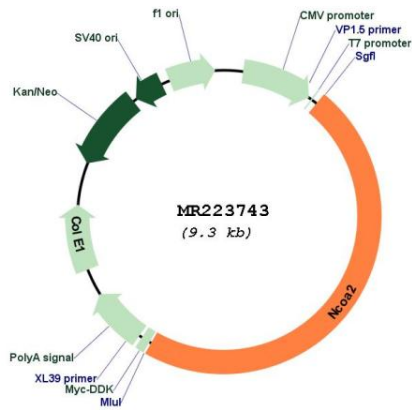
UniProt ID: [Q61026](#)

Cytogenetics: 1 4.12 cM

MW: 158.9 kDa

Gene Summary: Transcriptional coactivator for steroid receptors and nuclear receptors. Coactivator of the steroid binding domain (AF-2) but not of the modulating N-terminal domain (AF-1). Required with NCOA1 to control energy balance between white and brown adipose tissues. Critical regulator of glucose metabolism regulation, acts as RORA coactivator to specifically modulate G6PC expression. Involved in the positive regulation of the transcriptional activity of the glucocorticoid receptor NR3C1 by sumoylation enhancer RWDD3. Positively regulates the circadian clock by acting as a transcriptional coactivator for the CLOCK-ARNTL/BMAL1 heterodimer (PubMed:24529706).[UniProtKB/Swiss-Prot Function]

Product images:



Circular map for MR223743