

## Product datasheet for **MR223561**

### **Cenpc1 (NM\_007683) Mouse Tagged ORF Clone**

#### **Product data:**

Product Type:	Expression Plasmids
Product Name:	Cenpc1 (NM_007683) Mouse Tagged ORF Clone
Tag:	Myc-DDK
Symbol:	Cenpc1
Synonyms:	CENP-C; Cenpc
Mammalian Cell Selection:	Neomycin
Vector:	pCMV6-Entry (PS100001)
E. coli Selection:	Kanamycin (25 ug/mL)



[View online »](#)

**ORF Nucleotide Sequence:**

>MR223561 representing NM\_007683  
 Red=Cloning site Blue=ORF Green=Tags(s)

TTTTGTAATACGACTCACTATAGGGCGGCCGGAATTCGTGACTGGATCCGGTACCGAGGAGATCTGCC  
 GCC**CGCATCGCC**

ATGGCCTCGTTCCATCTGGATCATCTAAAGAACTACCACAGAAGATATTGCCGGTCTTCCAGAGCACCCA  
 ACATTCATACAAAAAAGGCCAGAACATGCTGGAAATCTTACAAGATTGTTTTGAAGATCAGAGTAAGGC  
 TTCATTTCTTGATGATTTTACAGAGTCATTGACTTCTTCAACACAAAAAAGAAAGCCAATTATAGTCAA  
 TCATCAAGCAAAAAGTGCCAGAGTCACATTCCAAACCAGTTCAGTGTCTTCAAGGACAGGAGAAGCTT  
 CTCTGCAAGCGTCTGCAGAGCCAGTGAAGCCGCTGGTGGATCAGTTCAGGCTAATGAAGTTCACCATGG  
 TCGCTCTGATGAATTGGACTTATGTGTTGGCTCCCCTGTGGTCTCCTGGATGCAAACGTCAACACGTTA  
 CAGAAAGCCGCTTACCTGCCGGCCAAAAGAGAGTGGCTTCTGTCTCAAGGAGTCCAGTAGATAGGCAGG  
 CTTCAAATAAAAAACATTTCTTTAAAACCAGGAAAAGGTTAACTTTGAAGATAAAGTTACTTTGAGCAC  
 AGCAGAAAACAGAGAACAGTGTGTTACAAGTAGAGGATAACTTATCCAAGGACAAGAAGGGACATCATCA  
 GAAATCACTCAGAAAAGAGACGATCTGAGTTCGTATGTCCAATCACGTTCTAAGAAGAATTTTTCGGAGT  
 TGTTTTAGAGACTGTCAAGAGGAAAAGTAAATCCAGTCTGTGGTCAAGGACACAGCAGCAGTTCATT  
 TTCTCCGCTCCTCCAAGTGACATGAAATTATTAGAAGATGAATTTATTATTGATCGGTCAGATAGAAGT  
 TTTTCAAGTCGACTTTGGGTGATGATACCAAGCAAAGACAGGCATCTGAGCGCCACAAGCCATCTCCTG  
 AAAACTGCAGTCTTCAAGGTAAAGTCAAGAGAGAAATCTCATAGTTTATCTGCAATGACGTTTGC  
 AAGAAACACACAGTCTGATAAGGCTCACCAATAGAGGAAGCTCAGCTCTCTGTTGAAGAAAACCCGGCA  
 ACTACTTGTACAGATGAGTTGAAAATGATTGTGATCTCCTGAAAATAAATGCAATCTGAGACTGCCA  
 AAACCCACCCGATGGGAAAGACTACGAAACAGAGCCAGAGGAGAGTGTCTAAGCCTAAAGCAGCTGA  
 AGAGCTCAGGAAGGGACAGAGTAGCTGGGAAAATAGCAATGTGTCAAACACTGGCCAAGACAAGTACAG  
 ATCAACTCGAAAAGAAATATGAAGGACTGTGAAGAGGTGAGGAATGAGCCTAATCCAAGAAAACAGAAGC  
 CAGCTCTTAAAAAAGAAAAAACAATAGCACCCAAACCAATAAGGAAAAATCTGAAAAGAAATTTTT  
 TTCTGGTGGTCCAAGAACAATTTGTTCCAAAAAAGTAACTTTGACTTCCAGGAGAAGTTGTAGAATT  
 TCTCAGCGTCCATCTGAGTGGTGGAGGGTAAAATCAGATGAAAGTTCTGTTGATAGAAATCCTTCAAAG  
 AAAATAACTCACCAGTGGTATATCCAATAAAAAGAAGCAGACTAAGAGAAATCATGTATCTAAGAGGGC  
 TGGGAAGAAACCTGGTTCATCAAAAAGACAGAAGACAGAGATGAGCCCAAGAGTACAGAAGTCTTTAAAT  
 GTAAGGATTCTGGAGGAAGTGTAGTGGCCATGATGACACTTCTCGTCCAGAGGAAGCCATTGAAAA  
 TCATTGAGGCAGACCAACTCAGAAGAGCCTTGCTATTTCTCGACCTAAAAGAGGCTGTAAGTATCGAAA  
 CAATGTTATGACATCACCGAATGTTCAATTTAAAGTCTCATACTGAGGAATATACAAGCAAGACACAATG  
 GAGTCTGCTTCCAATTCAGAAATGTCTAAACGTTCAAGTGTGGGAAGAAAGTGGACCTTCCAGGTTCAAGA  
 ATTATGAAATGCCAGGGAGCAGTAATCTGAGATGGGTGATGAACAGGACCAGAAGAGTTTGATTTTAC  
 AACAAGAAGTTTTAATATGGTACCAGATAAAAAATTACATCACAATTAGTACTGCCCTCCAACCTACCA  
 AATGTTTCGTGATCTAATAGAATACGTTTGAACCTCTGGAGTATTGGCGAGGGGAACGGGTAGATTATC  
 AAGAAAGTTCGTGGGACAACCTGTGCTTGAATAATATCCCATCTTCAGTACCCACGAAAAATAAAGGC  
 ACAAGAACAACCTCGGCAAAGTCAACAAAAAAGTTACCAAGAAGCCGACCCATCTCAATAGCCATGAAAA  
 GCTAAGATGGAGCTGCCTCTGGATATGCGTCTGGGAGATCCCTTTCAGGCAACATTGGCGAAGGACCCAG  
 AAACCGCAGAGCTTGTCCCATGGATCTTATAAGACCACGAGATACATACCGCTTTTTTTGTTGAGCAACA  
 TGGTTTGAAGTTTTTAAAAACATTGGATACAATATATTTTTTCTACTGAAAAATTGGTTTTAGGACCTTAT  
 GAAGAGAAAGGAAAAACAGCATGTTGGCCAAAGATATATTGGTTTTTTATGTAACTTTGGTACCTTTTAT  
 GTACATTACATGAAACACCTTATAAGTTAACTACTGGGATTCATTCTATGTTCTTCAGGTAATCATT  
 CAACATTAACCTCTGAATGTGAAAGTAGTCTTCTTTTACTCAAATAAAAAGG

**ACGCGT**ACGCGGCCGCTCGAGCAGAACTCATCTCAGAAGAGGATCTGGCAGCAATGATATCCTGGATT  
 ACAAGGATGACGACGATAAGGTTTAA

**Protein Sequence:** >MR223561 representing NM\_007683  
 Red=Cloning site Green=Tags(s)

MASFHLDHLKNYHRRYCRSSRAPNIHTKKGQNMLEILQDCFEDQSKASFLLDDFTESLTSSTQKKKANYSQ  
 SSSKKCPESHKPVVSSRTGEASLQASAEPSEAAGGSVQANEVHHGASDEL DLCVGGSPVLLDANVNTL  
 QKAASPAGQKRVASVSRSPVDRQASNKNI SFKTRKRLNFEDKVTLSTAETENSVLQVEDNL SKGQEGTSS  
 EITQKRDDLSSDVQSRSKNF SELFLETVKRKS SSSSVVRHTAAVPPSPPPP SPMKLEDEFI IDRSDRS  
 FSSRLWVMIPSKDRHLSAHKPS PENTAL LQGGKSREKSHLSAMTFARNTQSDKAHP IEEAQLSVEENPA  
 TTCTDELEND CRSPENKMQSETAKTPPAWERTTKQSQRVSKPKAAEELRKGQSSWENS NVSNTGQDKLQ  
 INSKRNMKDCEEVRNEPNPKKQKPALENKKKTNSTQTNKEKSGKFFSGGSKNFVPKVTLTSRRSRI  
 SQRPEWVRVKSDESSVDRNPSKENNSPVVYPNKKQTKRNHVSKRAGKPGSSKRQKTEMSPRVQKSLN  
 VKDSGGTVSGHDDTSRSQRKPLK IIEADPTQKSLAISRPKRGCKYRNNVMTSPNVHLKSHTEEYTSKTQM  
 ESASNSEMSKRSVWEESGSRFKNYEMPSSNSEMGDEQDQKSLHFTTRSFNMVDPKLLHKLVLPSNSP  
 NVRRSNRIRLKPLEYWRGERVDYQESSGQLVLEIISPSSVPTK IKAQRNLGKVNKKVTKKPTHLNSHEK  
 AKMELPLDMRLGDPFQATLAKDPETAELVPMDLIRPRD TYRFFVEQHGLKVFKTLDTIYFSTGKLV LGPY  
 EEK GKQHVGDILVFYVNF GDLLCTLHETPYKLT TGDSFYVPSGNHYNIKNLLNVESSLLFTQIKR

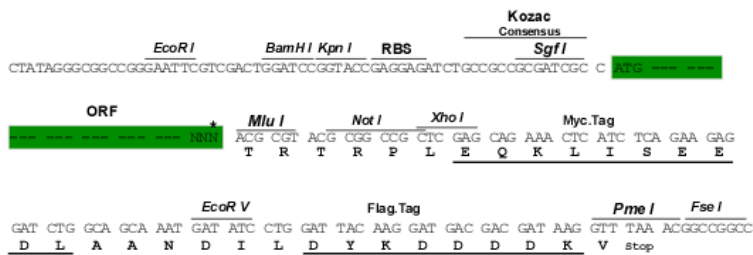
TRTRPLEQKLISEEDLAANDILDYKDDDDKV

**Chromatograms:** [https://cdn.origene.com/chromatograms/mm9094\\_c05.zip](https://cdn.origene.com/chromatograms/mm9094_c05.zip)

**Restriction Sites:** SgfI-MluI

**Cloning Scheme:**

Cloning sites used for ORF Shuttling:

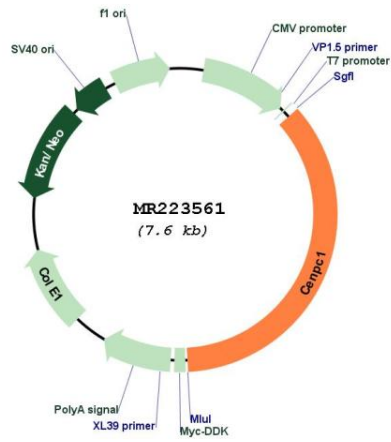


\* The last codon before the Stop codon of the ORF

**ACCN:** NM\_007683

<b>ORF Size:</b>	2718 bp
<b>OTI Disclaimer:</b>	The molecular sequence of this clone aligns with the gene accession number as a point of reference only. However, individual transcript sequences of the same gene can differ through naturally occurring variations (e.g. polymorphisms), each with its own valid existence. This clone is substantially in agreement with the reference, but a complete review of all prevailing variants is recommended prior to use. <a href="#">More info</a>
<b>OTI Annotation:</b>	This clone was engineered to express the complete ORF with an expression tag. Expression varies depending on the nature of the gene.
<b>Components:</b>	The ORF clone is ion-exchange column purified and shipped in a 2D barcoded Matrix tube containing 10ug of transfection-ready, dried plasmid DNA (reconstitute with 100 ul of water).
<b>Reconstitution Method:</b>	<ol style="list-style-type: none"><li>1. Centrifuge at 5,000xg for 5min.</li><li>2. Carefully open the tube and add 100ul of sterile water to dissolve the DNA.</li><li>3. Close the tube and incubate for 10 minutes at room temperature.</li><li>4. Briefly vortex the tube and then do a quick spin (less than 5000xg) to concentrate the liquid at the bottom.</li><li>5. Store the suspended plasmid at -20°C. The DNA is stable for at least one year from date of shipping when stored at -20°C.</li></ol>
<b>RefSeq:</b>	<a href="#">NM_007683.4</a>
<b>RefSeq Size:</b>	3192 bp
<b>RefSeq ORF:</b>	2721 bp
<b>Locus ID:</b>	12617
<b>UniProt ID:</b>	<a href="#">P49452</a>
<b>Cytogenetics:</b>	5 E1
<b>MW:</b>	102.2 kDa
<b>Gene Summary:</b>	This gene encodes a centromeric protein component of a nucleosome-associated complex that plays a central role in kinetochore protein assembly, mitotic progression and chromosome segregation. The human ortholog encodes a protein with DNA-binding activity, that associates constitutively to kinetochores throughout the cell cycle, as part of a prekinetochore complex, together with centromeric protein-A and centromeric protein-B. Multiple pseudogenes of this gene have been identified. Alternative splicing results in multiple transcript variants. [provided by RefSeq, Sep 2016]

Product images:



Circular map for MR223561