

## Product datasheet for MR223554L3

### Wdr1 (NM\_011715) Mouse Tagged Lenti ORF Clone

#### Product data:

Product Type:	Expression Plasmids
Product Name:	Wdr1 (NM_011715) Mouse Tagged Lenti ORF Clone
Tag:	Myc-DDK
Symbol:	Wdr1
Synonyms:	Aip1; D5Wsu185e; rede
Mammalian Cell Selection:	Puromycin
Vector:	pLenti-C-Myc-DDK-P2A-Puro (PS100092)
E. coli Selection:	Chloramphenicol (34 ug/mL)
ORF Nucleotide Sequence:	The ORF insert of this clone is exactly the same as(MR223554).
Restriction Sites:	SgfI-MluI
Cloning Scheme:	

Cloning sites used for ORF Shuttling:



\* The last codon before the Stop codon of the ORF.

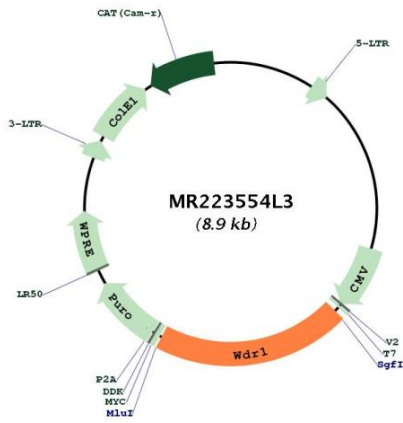
ACCN:	NM_011715
ORF Size:	1818 bp



[View online >](#)

<b>OTI Disclaimer:</b>	The molecular sequence of this clone aligns with the gene accession number as a point of reference only. However, individual transcript sequences of the same gene can differ through naturally occurring variations (e.g. polymorphisms), each with its own valid existence. This clone is substantially in agreement with the reference, but a complete review of all prevailing variants is recommended prior to use. <a href="#">More info</a>
<b>OTI Annotation:</b>	This clone was engineered to express the complete ORF with an expression tag. Expression varies depending on the nature of the gene.
<b>Components:</b>	The ORF clone is ion-exchange column purified and shipped in a 2D barcoded Matrix tube containing 10ug of transfection-ready, dried plasmid DNA (reconstitute with 100 ul of water).
<b>Reconstitution Method:</b>	<ol style="list-style-type: none"><li>1. Centrifuge at 5,000xg for 5min.</li><li>2. Carefully open the tube and add 100ul of sterile water to dissolve the DNA.</li><li>3. Close the tube and incubate for 10 minutes at room temperature.</li><li>4. Briefly vortex the tube and then do a quick spin (less than 5000xg) to concentrate the liquid at the bottom.</li><li>5. Store the suspended plasmid at -20°C. The DNA is stable for at least one year from date of shipping when stored at -20°C.</li></ol>
<b>RefSeq:</b>	<a href="#">NM_011715.2</a>
<b>RefSeq Size:</b>	2878 bp
<b>RefSeq ORF:</b>	1821 bp
<b>Locus ID:</b>	22388
<b>UniProt ID:</b>	<a href="#">O88342</a>
<b>Cytogenetics:</b>	5 20.63 cM
<b>Gene Summary:</b>	Induces disassembly of actin filaments in conjunction with ADF/cofilin family proteins (By similarity). Enhances cofilin-mediated actin severing (PubMed:25915128). Involved in cytokinesis. Involved in chemotactic cell migration by restricting lamellipodial membrane protrusions (By similarity). Involved in myocardium sarcomere organization. Required for cardiomyocyte growth at the postnatal and maintenance at the adult stage (PubMed:24840128). Involved in neutrophil actin dynamics and migration. Involved in megakaryocyte maturation and platelet shedding (PubMed:17515402). Required for the establishment of planar cell polarity (PCP) during follicular epithelium development and for cell shape changes during PCP; the function seems to implicate cooperation with CFL1 and/or DSTN/ADF. Involved in the generation/maintenance of cortical tension (PubMed:25915128). Involved in assembly and maintenance of epithelial apical cell junctions and plays a role in the organization of the perijunctional actomyosin belt (By similarity).[UniProtKB/Swiss-Prot Function]

Product images:



Circular map for MR223554L3