

Product datasheet for **MR223496**

Eda (NM_001177943) Mouse Tagged ORF Clone

Product data:

Product Type: Expression Plasmids
Product Name: Eda (NM_001177943) Mouse Tagged ORF Clone
Tag: Myc-DDK
Symbol: Eda
Synonyms: Ed1; Eda-A1; Eda-A2; EDA1; HED; Ta; tabby; Tnlg7c; XLHED
Mammalian Cell Selection: Neomycin
Vector: pCMV6-Entry (PS100001)
E. coli Selection: Kanamycin (25 ug/mL)
ORF Nucleotide Sequence: >MR223496 representing NM_001177943
Red=Cloning site Blue=ORF Green=Tags(s)

TTTTGTAATACGACTCACTATAGGGCGGCCGGAATTCGTCGACTGGATCCGGTACCGAGGAGATCTGCC
GCC**CGGATCGCC**

ATGGGCTACCCAGAGGTAGAGCGCAGGGAACCCCTGCCTGCGGCAGCGCCAAGGGAGCGGGCAGCCAGG
GCTGCGGCTGTCGCGGGGCCCTGCTCGGGCGGGCAAGGGAACAGCTGCCGGCTCTTCTGGGTTTCTT
TGGCCTCGCTGGCCCTCCACCTGCTGACGCTGTGCTGCTACCTAGAGTTGCGGTCCGAATTGCGGCGG
GAACGGGAACCGAGTCCCGCTCGGTGGCCCGGGTCTCCTGGCACCTCTGGCACCTAAGCAGCCCTG
GGAGCCTCGACCCGGTGGGTCCCATCACCCGCCACCTGGGGCAGCCGTCCTTTCAACAGCAGCCTTTGGA
ACCGGGAGAAGATCCACTCCCCCTGACTCCCAGGACCGGACCAGATGGCCCTCCTGAATTTCTTCTTT
CCTGATGAAAAGGCATATTCTGAAGAGGAAAGTAGGCGTGTTTCGCCGAATAAGAGAAGCAAAAGTGGTG
AAGGAGCAGATGGTCCTGTTAAAAACAAGAAAAGGAAAGAAGGCAGGGCCACCTGGGCCAACGGCCC
CCCAGGACCTCCAGGACCTCCGGGACCCAGGGACCTCCAGGGATTCCAGGAATTCCTGGGATCCAGGA
ACAACCTGTTATGGGACCACCTGGCCACCTGGCCCTCCTGGTCTCAAGGACCCCTGGCCTCAAGGAC
CTTCTGGTGTGCTGATAAACTGGAACTCGGGAAAATCAGCCAGCTGTGGTGCATCTGCAGGGCCAAGG
GTCAGCAATTCAAGTCAAAAATGATCTTTCAGGTGGAGTGTCTCAATGACTGGTCTCGCATCACTATGAAC
CCTAAGGTGTTTAACTACATCCCGCAGCGGGAGCTGGAGTACTGGTGGACGCACCTACTTCATCT
ATAGTCAGACCTTGCTCCCTCCACTTTTGTCTTCTCCTGTCCTGGGCCATTCCCACAGGTCTGCCA
GTGGCCATTCAATTCATCCCTCATTGCGTGCCTCCATCGGGGCTCTCCTCAGAGCTACAAGTACATAGG
CCT

ACGCGTACGCGGCCGCTCGAGCAGAACTCATCTCAGAAGAGGATCTGGCAGCAATGATATCCTGGATT
ACAAGGATGACGACGATAAGGTTAA



[View online »](#)

Protein Sequence: >MR223496 representing NM_001177943
Red=Cloning site Green=Tags(s)

MGYPEVERREPLPAAAPRERGSQGCGRGAPARAGEGNSCRLFLGFFGLSLALHLLTLCCYLELRSELRR
 ERGTESRLGGPGAPGTSGLTSSPGLDPVGPITRHLGQPSFQQPLEPGEDPLPPDSQDRHQMALLNFFF
 PDEKAYSEEESSRRVRRNKRKSKSGEGADGPVKNKKKGGKAGPPGPPGPPGPPGPPGPPGPPGIPGIPGIPG
 TTVMGPPGPPGPPGPPGPPGLQGPSGAADKTGTRENQPAVVHLQGQGSATQVKNDLSGGVLNDSRITMN
 PKVFKLHPRSGELEVLVDGTYFIYSQTLPLSTFVLLLSWAHSPQCQWPFISIPHCVPSGLSSELQVHR
 P

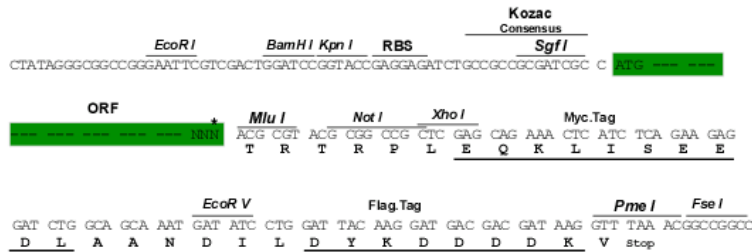
TRTRPLEQKLISEEDLAANDILDYKDDDDKV

Restriction Sites:

Sgfl-MluI

Cloning Scheme:

Cloning sites used for ORF Shuttling:



* The last codon before the Stop codon of the ORF

ACCN: NM_001177943

ORF Size: 1053 bp

OTI Disclaimer: The molecular sequence of this clone aligns with the gene accession number as a point of reference only. However, individual transcript sequences of the same gene can differ through naturally occurring variations (e.g. polymorphisms), each with its own valid existence. This clone is substantially in agreement with the reference, but a complete review of all prevailing variants is recommended prior to use. [More info](#)

OTI Annotation: This clone was engineered to express the complete ORF with an expression tag. Expression varies depending on the nature of the gene.

Components: The ORF clone is ion-exchange column purified and shipped in a 2D barcoded Matrix tube containing 10ug of transfection-ready, dried plasmid DNA (reconstitute with 100 ul of water).

Reconstitution Method:

1. Centrifuge at 5,000xg for 5min.
2. Carefully open the tube and add 100ul of sterile water to dissolve the DNA.
3. Close the tube and incubate for 10 minutes at room temperature.
4. Briefly vortex the tube and then do a quick spin (less than 5000xg) to concentrate the liquid at the bottom.
5. Store the suspended plasmid at -20°C. The DNA is stable for at least one year from date of shipping when stored at -20°C.

RefSeq: [NM_001177943.1](#), [NP_001171414.1](#)

RefSeq Size: 5105 bp

RefSeq ORF: 1056 bp

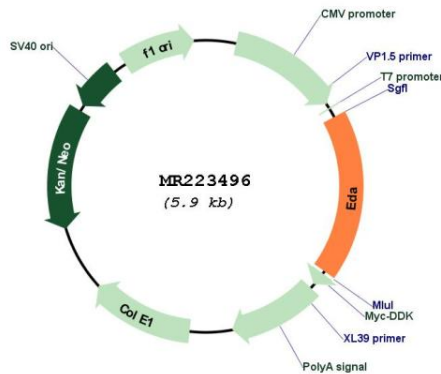
Locus ID: 13607

Cytogenetics: X 43.59 cM

MW: 37.5 kDa

Gene Summary: Cytokine which is involved in epithelial-mesenchymal signaling during morphogenesis of ectodermal organs. Functions as a ligand activating the DEATH-domain containing receptors EDAR and EDA2R. Isoform TAA binds only to the receptor EDAR, while isoform TA-A2 binds exclusively to the receptor EDA2R (By similarity). May also play a role in cell adhesion (PubMed:10534613).[UniProtKB/Swiss-Prot Function]

Product images:



Circular map for MR223496