

Product datasheet for MR223456

4933403O08Rik (NM_001177389) Mouse Tagged ORF Clone

Product data:

Product Type: Expression Plasmids
Product Name: 4933403O08Rik (NM_001177389) Mouse Tagged ORF Clone
Tag: Myc-DDK
Symbol: 4933403O08Rik
Synonyms: RP23-466J17.1
Mammalian Cell Selection: Neomycin
Vector: pCMV6-Entry (PS100001)
E. coli Selection: Kanamycin (25 ug/mL)
ORF Nucleotide Sequence: >MR223456 representing NM_001177389
Red=Cloning site Blue=ORF Green=Tags(s)

TTTTGTAATACGACTCACTATAGGGCGCCGGGAATTCGTCGACTGGATCCGGTACCGAGGAGATCTGCC
GCC**CGATCGCC**

ATGAATCAGGTGGTGATAGCTACCACCCACCCTAACTAAGGAGTTAGAAAGCACTGCCCTTGTAAAC
CAAAAACCTTCAGGGCTTCTTCGCATAGAGAAAATACCAATTAAGTATCTATGGGTCCAGAATTTCAACG
CTTAGAAGTTACAGGAATTGCCAGTCCAGAGGAAAGGGTAAAGGCACCGCAATACTTGTGCTGGTGTT
CCTGAAAAGGAGGAGTTAGATGATACAGAAATCCAACCTTGCCTTCACTGGGTTGTACACCTGGAGG
CTTTAATAAATAAATGTTCAACATCCTCAGAATACAGTCGCCAGGAACCCAGGAAATCTGTGGATGGA
ATCTCCAGAAAATGCAGAGTCCCGAGGAAGTATGATATGGAAGTAGCGAGAAGCATGTATCCTTTTAGA
GAAAGATCCATCTTTCGGCGTTCCTGGGCAGAGCTCTTAGAGGCACCACTAAACAGTGAGGGGCTCCATA
TTATCCAAACAGAACATATTCACAATGAAGAAAATAGAGATATGGGTTGCAACAACTAACATTACAGGA
AGAGAATCAAGTAATCCCCTTCCCAAGGATCAACATTTCCAGGCTTTGCAAGGCCCTTTCCCCTTGTG
CCAGAGCGCCCTAAGCTCCAAAGGCAACGTAGTAGAAGCTTGCCAAGAAACAGTGAAGTCGGAGGCCAAT
ATTTAAATACACCTGAATTCAAAGGAAGTGCAGAAGAAACGCCCTTCTCCACGTGATCATAATTTACT
AACAGAGAAAAATCAAGGAAAGACACAGCATGGAGGGAGCCTGGCAAAGAGTAATTCATCTCATTCT
GGAGAACATTTTCCATTATGCCAAGATTTGACAATCTTCAATTCAGGAACTTTGGAATTCCTGAGG
ATAATTCTGCACGTCCAGAGGCAATATGAGAATTCAGAGCAATGTCAATACTATCCCCATGGTTAATGT
TGGAATTCATAGATAATCCTCAAGTTCTTAAAGGCAATACTGGAGTTCAGGGGCGAGTGGTTTTGGA
GTTTACATGGGCAATAGTGGTAGACCTTCTGGACATGTGGTATCTTCTCCACTATTGAGCTCTCAAAGA
TAGGTGAACACCAAGTTG

ACGCGTACGCGGCCGCTCGAGCAGAACTCATCTCAGAAGAGGATCTGGCAGCAATGATATCCTGGATT
ACAAGGATGACGACGATAAGGTTTAA



[View online >](#)

Protein Sequence: >MR223456 representing NM_001177389
Red=Cloning site Green=Tags(s)

MNQVVIATTPPLTKELESTALVKPKTSGLLRIEKIPIKYLWPEFQRLEVTGIASPEERKGTAILVAGV
 PGKEELDDTEIPTLHFTGFVHLEALINKCSPSSEYSRPGTGNLWME SPENAE SPGSDDMEVARSMYPFR
 ERSIFRRSWAELLEAPLNSEGLHI IQTEHIHNEENRDMGCNKL TLQEENQVIPLPKDQHFQALQGPFP
 LPERPKLQRQSRSLPRNSEVGGQYLNTPEFKGSAEETPFPRDHLLTEENIKERHSMEGAWQRVIPSHS
 GEHFPIMPRFDNSSIQGNFGIPEDNSARPRGNMRIQSNVNTIPMVNVGIPIDNPQVLKNGTGVPRGSGFG
 VYMGNSGRPSGHVVSPLIELSKI GEHQL

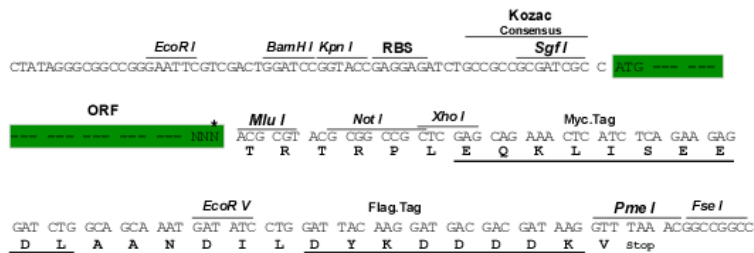
TRTRPLEQKLISEEDLAANDILDYKDDDDKV

Chromatograms: https://cdn.origene.com/chromatograms/mm9090_e04.zip

Restriction Sites: SgfI-MluI

Cloning Scheme:

Cloning sites used for ORF Shuttling:



* The last codon before the Stop codon of the ORF

ACCN: NM_001177389

ORF Size: 1137 bp

OTI Disclaimer: The molecular sequence of this clone aligns with the gene accession number as a point of reference only. However, individual transcript sequences of the same gene can differ through naturally occurring variations (e.g. polymorphisms), each with its own valid existence. This clone is substantially in agreement with the reference, but a complete review of all prevailing variants is recommended prior to use. [More info](#)

OTI Annotation: This clone was engineered to express the complete ORF with an expression tag. Expression varies depending on the nature of the gene.

Components: The ORF clone is ion-exchange column purified and shipped in a 2D barcoded Matrix tube containing 10ug of transfection-ready, dried plasmid DNA (reconstitute with 100 ul of water).

- Reconstitution Method:**
1. Centrifuge at 5,000xg for 5min.
 2. Carefully open the tube and add 100ul of sterile water to dissolve the DNA.
 3. Close the tube and incubate for 10 minutes at room temperature.
 4. Briefly vortex the tube and then do a quick spin (less than 5000xg) to concentrate the liquid at the bottom.
 5. Store the suspended plasmid at -20°C. The DNA is stable for at least one year from date of shipping when stored at -20°C.

RefSeq: NM_001177389.1, NP_001170860.1

RefSeq Size: 1520 bp

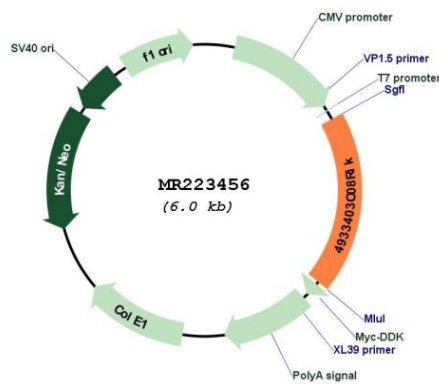
RefSeq ORF: 1140 bp

Locus ID: 71030

Cytogenetics: X E1

MW: 42.3 kDa

Product images:



Circular map for MR223456