

Product datasheet for **MR223443**

Ebf3 (NM_001113415) Mouse Tagged ORF Clone

Product data:

Product Type:	Expression Plasmids
Product Name:	Ebf3 (NM_001113415) Mouse Tagged ORF Clone
Tag:	Myc-DDK
Symbol:	Ebf3
Synonyms:	3110018A08Rik; mKIAA4201; O/E-2
Mammalian Cell Selection:	Neomycin
Vector:	pCMV6-Entry (PS100001)
E. coli Selection:	Kanamycin (25 ug/mL)



[View online »](#)

ORF Nucleotide Sequence:

>MR223443 representing NM_001113415
 Red=Cloning site Blue=ORF Green=Tags(s)

TTTTGTAATACGACTCACTATAGGGCGGCCGGAATTCGTCGACTGGATCCGGTACCGAGGAGATCTGCC
 GCC**GCGATCGCC**

ATGTTTGGGATTCAGGAGAATATTCGCGCGGGGGGACGACCATGAAGGAGGAGCCGCTGGCGACGGCA
 TGAACCCGGTGCCTCGTGGATGCACACGGCAGGCGTGGTGGACGCCAACACGGCCGCCAGAGCGGCT
 GGGGCTGGCGCGGGCGCACTTCGAGAAGCAGCCTCCTTCCAACCTCCGAAATCCAATTTCTTCCACTTC
 GTGCTGGCGCTCTACGACAGGCAGGGGACGCGGTGGAGATCGAAAGGACCGCTTTTGTGGACTTTGTGG
 AGAAAGAGAAAGAGCCGAACAACGAGAAAACCAACAACGGCATTCACTACAAGCTGCAGCTACTGTACAG
 CAATGGCGTCAGAACAGAGCAAGATCTGTATGTCCGCCTCATAGATTCAATGACCAAACAGGCCATCGTG
 TATGAAGGCCAGGACAAGAATCCGGAGATGTGCCGCTGTGCTGACCCACGAGATCATGTGCAGCCGGT
 GCTGTGACAAGAAGAGTTGTGGCAATAGAAACGAGACACCCTCAGACCCTGTAATCATTGACAGATTCTT
 TCTAAAGTTCTTCTCAAGTGAATCAGAACTGCCTGAAGAATGCGGGCAACCCTCGGGACATGCGGAGG
 TTCCAGGTCGTTGTATCGACAACAGTCAACGTGGACGGCCACGTGCTGGCCGTGTCTGACAAATGTTTG
 TGCACAACAATTCAAACACGGGAGGCGGGCCCGCCCTAGACCCGTCAGAAGGTACGGCCCTTCTTA
 TCTGAAAATGCCACTCCGTGTATCAAGGCTATCAGCCCCAGTGAAGGCTGGACCACGGGGGTGCCACT
 GTGATCATAATCGGGGACAACCTCTTTGACGGTCTACAAGTTGTGTTTCGAACTATGTTGGTGTGGAGTG
 AGCTGATAACCCCCACGCCATCCGAGTGCAGACGCCCTCGACACATCCCTGGAGTTGTTGAAGTGAC
 CCTCTCTACAAGTCTAAGCAGTTCTGCAAAGGCGCTCCTGGACGCTTTGTCTACACTGCCCTTAATGAG
 CCAACCATAGATTACGGCTTCCAGAGTTGCAGAAAGTGATACCCAGACATCCAGGTGACCCCGAAAGGT
 TACCAAGGAAGTGTACTGAAGAGGGCAGCAGACCTTGTGGAAGCCTTGTATGGGATGCCTCACATAA
 CCAGGAGATCATCTGAAGAGAGCGGCCGACATTGCTGAGGCGTTGTACAGCGTTCCCGCAATCACAAC
 CAGATCCCCACCCTGGGCAACACCCAGCACACACTGGCATGATGGGTGTGAACCTTTCAGCAGCCAGC
 TAGCCGTTAATGTGTGAGAGACCTCACAAAGCAATGACCAAGTCGGCTACAGTCGCAATACAAGCAGCGT
 GTCCCCGCGAGGCTACGTCCCCAGCAGTACTCCCCAGCAGTCCAATTACAACACAGTCAGCACTAGCATG
 AATGGATATGGAAGTGGCGCCATGGCCAATCTAGGGTCCCTGGCTCGCCTGGATTTCTTAATGGCTCCT
 CCGTAACCTCCCTACGGCATAGTCCGTCAGCCCCACCATGGCAGCCTTTCGGTCAACCTCCCTTC
 AAAGTGTAGCAGCACACGGCATTCTTCTATTCTCACCTGCAATGTCATCTCCGAGTAAACAGAAG
 AGCGCTTTTGGCGCCGTGGTCCGGCCCCAAGCCTCGCCTCCTCCTCCTGCACCAGCGCCACGGGAACG
 GACTGCAAGCTATGTCTGGGCTGGTAGTCCCGCCCATG

ACGCGTACGCGGCGGCTCGAGCAGAAACTCATCTCAGAAGAGGATCTGGCAGCAAATGATATCCTGGATT
 ACAAGGATGACGACGATAAGGTTTAA

Protein Sequence:

>MR223443 representing NM_001113415
 Red=Cloning site Green=Tags(s)

MFGIQENIPRGTTMKEEPLGSGMNPVRSWMHTAGVVDANTAAQSGVGLARAHFEKQPPSNLRKSNFFHF
 VLALYDRQGQPVIEIERTAFVDFVEKEKEPNNEKTNNGIHYKLQLLYSNGVRTEQDLVYRLIDSMTKQAI
 YEGQDKNPEMCRVLLTHEIMCSRCCDKKSCGNRNETPSDPVIIDRFLLKFFLKCNQNLKNAGNPRDMRR
 FQVVVSTTVNVDGHVLAUSDNMFVHNSKHGRRARRLDPSEGTAPSYLENATPCIKAIISPSEGWTGGAT
 VIIIGDNFFDGLQVVFMTLVWSELITPHAIRVQTPPRHIPGVVEVTL SYKSKQFCKGAPGRFVYALNE
 PTIDYGFQRLQKVI PRHPGDPERLPKEVLLKRAADLVEALYGMPHNNQE IILKRAADIAEALYSVPRNHN
 QIPTLGNTPAHTGMMGVNSFSSQLAVNVSETSQANDQVGYSRNTSSVSPRGYVPSSTPQQSNYNTVSTSM
 NGYGSAMANLGVPGSPFLNGSSANSPIYVPSPTMAASSVTLPSNCSSTHGIFSFSPANVISAVKQK
 SAFAPVVRPQASPPPSCTSANGNGLQAMSLVPPPM

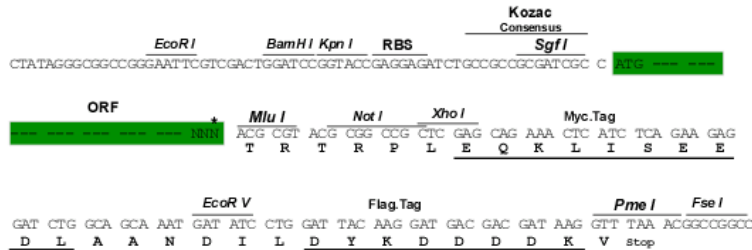
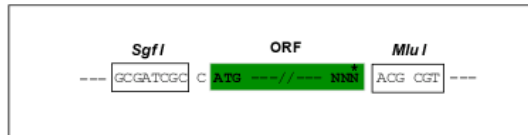
TRTRPLEQKLISEEDLAANDILDYKDDDDKV

Restriction Sites:

Sgfl-MluI

Cloning Scheme:

Cloning sites used for ORF Shutting:



* The last codon before the Stop codon of the ORF

ACCN: NM_001113415

ORF Size: 1788 bp

OTI Disclaimer: The molecular sequence of this clone aligns with the gene accession number as a point of reference only. However, individual transcript sequences of the same gene can differ through naturally occurring variations (e.g. polymorphisms), each with its own valid existence. This clone is substantially in agreement with the reference, but a complete review of all prevailing variants is recommended prior to use. [More info](#)

OTI Annotation: This clone was engineered to express the complete ORF with an expression tag. Expression varies depending on the nature of the gene.

Components: The ORF clone is ion-exchange column purified and shipped in a 2D barcoded Matrix tube containing 10ug of transfection-ready, dried plasmid DNA (reconstitute with 100 ul of water).

- Reconstitution Method:**
1. Centrifuge at 5,000xg for 5min.
 2. Carefully open the tube and add 100ul of sterile water to dissolve the DNA.
 3. Close the tube and incubate for 10 minutes at room temperature.
 4. Briefly vortex the tube and then do a quick spin (less than 5000xg) to concentrate the liquid at the bottom.
 5. Store the suspended plasmid at -20°C. The DNA is stable for at least one year from date of shipping when stored at -20°C.

RefSeq: [NM_001113415.1](#), [NP_001106886.1](#)
RefSeq Size: 5043 bp

RefSeq ORF: 1791 bp

Locus ID: 13593

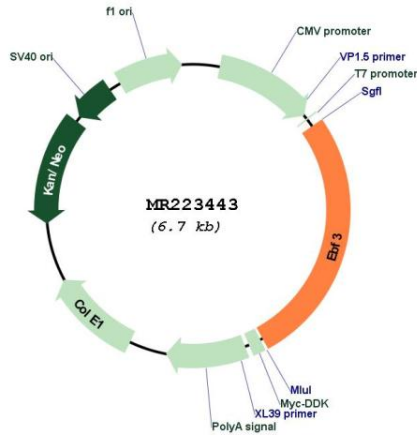
UniProt ID: [O08791](#)

Cytogenetics: 7 F3- F4

MW: 65.3 kDa

Gene Summary: Transcriptional activator (PubMed:9151732). Recognizes variations of the palindromic sequence 5'-ATTCCCNNGGGAATT-3' (By similarity).[UniProtKB/Swiss-Prot Function]

Product images:



Circular map for MR223443