

Product datasheet for MR223412L4

Bhlhe41 (NM_024469) Mouse Tagged Lenti ORF Clone

Product data:

Product Type:	Expression Plasmids
Product Name:	Bhlhe41 (NM_024469) Mouse Tagged Lenti ORF Clone
Tag:	mGFP
Symbol:	Bhlhe41
Synonyms:	6430520M22Rik; Bhlhb; Bhlhb2l; Bhlhb3; DEC2; Sh; Sharp1
Mammalian Cell Selection:	Puromycin
Vector:	pLenti-C-mGFP-P2A-Puro (PS100093)
E. coli Selection:	Chloramphenicol (34 ug/mL)
ORF Nucleotide Sequence:	The ORF insert of this clone is exactly the same as(MR223412).
Restriction Sites:	SgfI-MluI
Cloning Scheme:	

Cloning sites used for ORF Shuttling:



* The last codon before the Stop codon of the ORF.

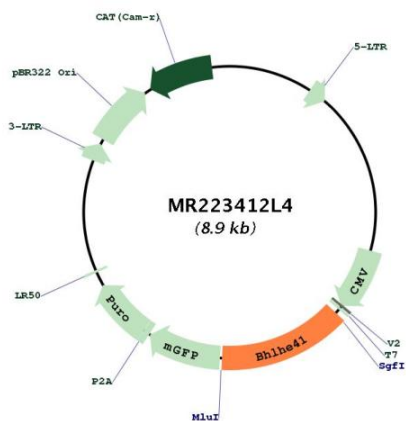
ACCN:	NM_024469
ORF Size:	1230 bp



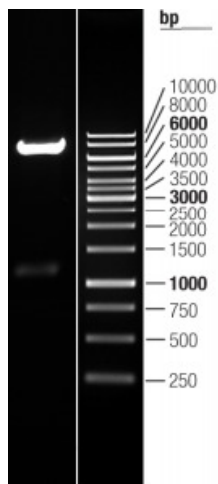
[View online »](#)

OTI Disclaimer:	The molecular sequence of this clone aligns with the gene accession number as a point of reference only. However, individual transcript sequences of the same gene can differ through naturally occurring variations (e.g. polymorphisms), each with its own valid existence. This clone is substantially in agreement with the reference, but a complete review of all prevailing variants is recommended prior to use. More info
OTI Annotation:	This clone was engineered to express the complete ORF with an expression tag. Expression varies depending on the nature of the gene.
Components:	The ORF clone is ion-exchange column purified and shipped in a 2D barcoded Matrix tube containing 10ug of transfection-ready, dried plasmid DNA (reconstitute with 100 ul of water).
Reconstitution Method:	<ol style="list-style-type: none">1. Centrifuge at 5,000xg for 5min.2. Carefully open the tube and add 100ul of sterile water to dissolve the DNA.3. Close the tube and incubate for 10 minutes at room temperature.4. Briefly vortex the tube and then do a quick spin (less than 5000xg) to concentrate the liquid at the bottom.5. Store the suspended plasmid at -20°C. The DNA is stable for at least one year from date of shipping when stored at -20°C.
RefSeq:	NM_024469.1 , NP_077789.1
RefSeq Size:	1421 bp
RefSeq ORF:	1233 bp
Locus ID:	79362
UniProt ID:	Q99PV5
Cytogenetics:	6 77.7 cM
Gene Summary:	This gene encodes a basic helix-loop-helix protein expressed in various tissues. The encoded protein can interact with Arntl or compete for E-box binding sites in the promoter of Per1 and repress Clock/Arntl's transactivation of Per1. This gene is believed to be involved in the control of circadian rhythm and cell differentiation. Defects in this gene are associated with the short sleep phenotype. Alternatively spliced transcript variants encoding multiple isoforms have been observed for this gene. [provided by RefSeq, Feb 2014]

Product images:



Circular map for MR223412L4



Double digestion of MR223412L4 using SgfI and MluI