

Product datasheet for MR223361

Eif4g1 (NM_001005331) Mouse Tagged ORF Clone

Product data:

Product Type: Expression Plasmids
Product Name: Eif4g1 (NM_001005331) Mouse Tagged ORF Clone
Tag: Myc-DDK
Symbol: Eif4g1
Synonyms: E030015G23Rik; eIF4G1
Vector: pCMV6-Entry (PS100001)
E. coli Selection: Kanamycin (25 ug/mL)
Cell Selection: Neomycin
ORF Nucleotide Sequence: >MR223361 representing NM_001005331
 Red=Cloning site Blue=ORF Green=Tags(s)

TTTTGTAATACGACTCACTATAGGGCGCCGGGAATTCGTCGACTGGATCCGGTACCGAGGAGATCTGCC
 GCC**CGGATCGCC**

ATGAACAAAGCTCCCCAGCCACAGGCCCCACCCGCCAGGTCCCCTGGACTCCCACAGCCAGCGTTTC
 CCCCAGGGCAGACTGCACCGGTGGTGTAGCACGCCTCAAGCGACACAAATGAACACGCCTTCTCAGCC
 CGCCAGCACTTCTACCCTAGCCGGGCCAGCCCTAGCAGTGCAGCCTCCCGAGTGCAGAGTGCAGCC
 CCTGCCGCTCCTGGCCAGCTCCCATGTCTACCTGCTGGATCCCAAGTAATGATGATCCCTTCCAGA
 TCTCTACTCAGCCTCCAAGGAGCCTACTATATCCCTGGACAGGGGCGTTCCACATATGTTGTCCCAAC
 ACAGCAGTACCCTGTGCAGCCAGGAGCCCAAGGCTTCTATCCAGGTGCAAGCCCTACCGAGTTTGGGACC
 TATGCTGGAGCCTATTACCCAGCCCAAGGTGTGCAGCAGTTTCTGCTAGTGTGGCTCCTGCCCCAGTTT
 TGATGAACCAGCCACCCAGATTGCTCCTAAGAGGGAACGGAAACTATCCGAATTCGAGACCCAAACCA
 AGGAGGGAAGGATATCACAGAAGAGATCATGTCTGGGGCCCGCACTGCCTCCACACCCACTCCTCCCCAG
 ACGGGAGGCAGTCTGGAGCCTCAACCAATGGGGAGTGCCTCAGTTGCTGTATTATCCGGCCAGATG
 ACCGGTCGAGGGAGCAGCCATTGGGGGGCCAGGACTGCCTGGCCAGAGCATAGCCCTGGCCAGACGA
 ATCTCAGCCTTCGTCGCTTCTCCAACCCATCACACCCCAATTTGGAGCCGGGTCTGAGTCTAAT
 CTTGGAGTCTCTCTATTCTGGGACACTATGACAACAGGGATGATACCAATGTCTGTAGAAGAATCGA
 CCCCTATCTTTGAAACTGGGAGCCGATTGCCTCTCTCCAGAACCCTCTTGCCGAACCCATACT
 GGAAGTAGAAGTGACACTCAGCAAACCCATTCCAGAATCTGAGTTCTCTCCAGTCTCTCCAGTTTCC
 ACGGCCCTGGTGCTCACAAGGTTGAAACTCATGAGCCCAATGGCGTGATCCCATCTGAGGATCTGGAAC
 CAGAGGTGGAGTCAAGCACAGAGCCAGCTCCTCCCTCTATCACCTGTGCTTCTGAATCGCTCGTGCC
 CATTGCTCCAAGTCCCAGCCTGAGGAAGTCTCAACGGAGCCCTCACCACAGCTGTGGATTTAAGC
 CCAGTCAGTGAGCCAGAGGAACAGGCCAAGAAGTTTTCATCAGCAGCACTGGCCAGCATTCTCTCCTG
 CTCACCTGTGGTCTTTCAGATACTTCTCCTGCTCAGGAGGAAGAAATGGAAGAAGATGACGATGACGA
 AGAAGGTGGAGAAGCTGAGAGTGAGAAGGGAGGAGGACGTCCTCCCTTGACAGTACTCCTGTCCAGCC
 CAGCTGTCTCAGAATTTAGAGGTGGCAGCAGCTACCCAGGTGGCAGTGTCTGTGCCAAAGAGGAGACGGA



View online »

AAATTAAGAGCTAAATAAGAAGGAGGCTGTAGGAGACCTTCTAGATGCCTTCAAGGAGGTGGACCCAGC
 AGTACCAGAGGTAGAGAATCAGCCTCCCCTGGCAGCAACCCAAGCCAGAGTCTGAGGGCAGCATGGTG
 CCCACACAGCCTGAGGAAACAGAAGAACTGGGACTCTAAGGAAGACAAAATTCATAATGCTGAGAAACA
 TCCAGCCTGGGGAGCAGAAGTATGAGTACAAGTCAGATCAGTGAAGCCTCTAAACCTTGAAGAAAAAGAA
 GCGTTATGACAGAGAATCCTGCTGGGCTTTCAGTTTCTTTGCCAGCATGCAGAAGCCAGAAGGATTG
 CCCCATACTGATGTGGTCTGGACAAGGCCAATAAAACACCACTTCGGCACTGGATCCCTCCAGAC
 TACCTGGCATAAACTGTGGCCAGATTTCACTCCATCTTTGCCAATCTTGGCCGACCCAGCCCTCAGCAA
 CCGTGGGCCCCGAGGGTGGGCCAGGTGGGGAGCTGCCCGAGGGCCGGCTGGCCTGGGACCCAGGGCC
 TCTCAGCAGGGCCACGAAAGGAAACTCGCAAGATCATTCTCAGTGATAATGACTGAAGACATAAAAC
 TAAATAAAGCAGAGAAGGCTTGGAAACCCAGTAGCAAACGGACAGCAGCTGATAAGGATCGAGGGGAAGA
 GGATGCTGATGGAAGCAAGACCCAGGACCTGTTCCGAGGGTACGCTCCATCCTGAATAAGCTGACACCC
 CAGATGTTTCAGCAGCTGATGAAGCAGGTGACACAGCTGGCCATTGACACGGAGGAACGCCTCAAAGGAG
 TTATTGACCTCATCTTTGAGAAAGCCATTTAGAGCCCACTTCTCTGTGGCTTATGCCAATGTGCCG
 CTGCTCATGGCCTGAAAGTGGCCACTACAGAAAAGCCAACAGTAACTGTGAATTTTCAAAGACTGTTG
 TAAATCGGTGCCAGAAGGAATTTGAGAAAGACAAAGATGATGATGAAGTTTTTGAAGAAAAAGCAAAAG
 AGATGGATGAAGCTGCTACGGCAGAAAGACGGGGACGCCTGAAAGAAGAGCTAGAAGAAGCCCGGACAT
 AGCTAGGCGGCGCTCTTTAGGGAATATCAAGTTTATTGGAGAGTTATTCAAGTTGAAGATGTTAACAGAA
 GCAATAATGCATGACTGTGTGGTCAAGCTACTTAAAGAACCATGATGAGGAGTCCCTGGAATGCCTGTC
 GCCTCCTCACCCTATAGGCAAAGACCTGGACTTTGCAAAGCCAAGCCTCGAATGGATCAGTATTTCAA
 CCAATGGAAAAAATCATTAAAGAAAAGAACCTCATCTCGCATCCGTTTTATGCTGCAGGATGTACTC
 GATCTGCGGCAGAGTAATTGGGTGCCACGCCGAGGGGATCAGGGTCTAAGACTATTGATCAAATTCACA
 AGGAGGCTGAGATGGAAGAGCACCGAGAACATATTAAGTACAGCAGCTCATGGCCAAGGGCAGCGACAA
 ACGTCGGGGTGGCCCTCCAGGCCCGCTATCAACCGTGGCCTTCCACTTGTAGATGATGTGGCTGGAAT
 ACAGTCCCAATTAGCAAAGGCAGTCGCCCATTTGACACCTCACGGCTCACCAAGATCACAAAGCCTGGTT
 CCATTGATTCTAACAACAGCTTTTGGACCTGGAGGACGACTGAGTTGGGGCAAGGGCAGCAGTGGGGG
 CTCAGGAGCCAAGCCCTCAGACACAGCATCGGAAGCTACTCGTCCAGCTACCTTGAATCGTTTTCTGCT
 CTTCAACAAACATTACCCGCAGAGAACACAGATAACAGACGTGTTGTACAGAGGAGTAGCTTGGCCGGG
 AACGAGGTGAGAAAGCTGGGGACCGGGGAGACCGACTAGAGCGGAGTGAGCGGGGAGGTGACCGTGGGG
 CCGACTGATCGTGCCAGAACACCTGCCACCAAGCGAAGTTTTAGCAAAGAAGTGGAGGAGCGAAGTAGA
 GAGCGGCCATCCCAGCCTGAGGGACTCCGCAAGGCAGCTAGCCTCACAGAGGATCGTGGTGGGATCCTG
 TGAAGCGGAAGCCACTCTACCTCCAGTGAGCCCTCAAAGGCTGCGCTGTCTGTGGATGAGGTGGAGAA
 GAAATCTAAGGCCATCATTGAGGAATATCTCCATCTCAATGACATGAAGGAGGCAGTACAGTGTGTCAG
 GAGCTGGCTTACCCCTCCTTGTCTTCTCTGACGGCTTGGTATCGAGTCCACGCTGGAGCGTAGTA
 CCATTGCTCGTGAGCATAATGGGGCGACTACTGCACCAACTGCTCTGTGCGGGGCACCTCTCTACTGCCCA
 GTACTATCAAGGGCTGTATGAAACACTAGAATTGGCTGAGGACATGGAAATTGATATCCCTCATGTATGG
 CTTTACCTGGCAGAACTGATTACACCTATTCTCCAGGAAGATGGGGTGGCCATGGGAGAGCTCTTCAGGG
 AAATTACGAAGCCTCTGAGACCCATGGGCAAAGCTACTTCTTTATTGCTGGAGATCCTGGGTCTCTTATG
 CAAGAGCATGGGTCCAAAAAGGTGGGGATGCTGTGGCGAGAGGCTGGCTGAGCTGGAGGAATTTCTA
 GCAGAGGGCCAAGACGTTGGCTCATTGTGGCTGAAAAGAAGGTGGAATATACCTTGGGAGAAGAACTCG
 AAGCTCCTGGCCAGAGGACACTTGCCCTTGGAGGCTTCTGAGGAGCTAGAGAAGCTGCTGAAGGACGG
 CGGAGTAATCAGCGTGTGTTGACTGGATAGACGCCAACCTAAATGAGCAGCAGATAGCATCCAATACA
 TTAGTTGAGCCCTCATGACAACTGTCTGTTATTCTGCAATTATCTTTGAGACTCCTCTCCGAGTGGATG
 TTCAAGTGTGAAAGTGCAGCAAGACTGCTGCAGAAATACCTGTGTGATGAGCAGAAGGAGCTACAAGC
 ACTCTATGCTCTCAGGCCCTTGTAGTGACCTTAGAACAGCCTGCCAACCTGCTTCGGATGTTCTTTGAT
 GCTCTATGATGAGGACGTGGTGAAGGAAGACGCCTTCTACAGCTGGGAGAGCAGCAAGGATCCTGCTG
 AACAGCAGGGCAAGGGTGTGGCCCTTAAATCTGTCACAGCATTCTCAATTGGCTTCGTGAGGCTGAGGA
 CGAGGAGTCTGATCAAC

ACGCGTACGCGGCCGCTCGAGCAGAACTCATCTCAGAAGAGGATCTGGCAGCAAATGATATCCTGGATT
 ACAAGGATGACGACGATAAGGTTTAA

Protein Sequence: >MR223361 representing NM_001005331
 Red=Cloning site Green=Tags(s)

```

MNKAPQPTGPPPARSPGLPQPAFPPGQTAPVVFSTPQATQMNTPSQPRQHFYPSRAQPPSSAASRVQSAA
PARPGPAPHVYPAGSQVMMIPSQISYSASQGAYYIPGQGRSTYVVPTQQYVPVQPGAPGFYPGASPTTEFGT
YAGAYYPAQGVQFPASVAPAPVLMNQPPQIAPKRERKTIIRIDPNQGGKDITEEIMSGARTASTPTPPQ
TGGSELEPQNGESPQVAVIIRPDDRSQGAAIGGRPGLPGPEHSPGTESQPSSPSPTPSPPPILEPGSESN
LGVLSIPGDTMTGMIPMSVEESTPISCETGEPYCLSPEPTLAEPITILEVEVTLSKPIPESEFSSSPLQVS
TALVPHKIVETHEPNGVIPSEDLEPEVESSTEPAPPPLSPCASESLVPIAPTAQPEELLNGAPSPPAVDLS
PVSEPEEQAKKVSSAALASILSPAPPVAPSDTSPAQEEEMEEDDDDEEGEAESEKGGEDVPLDSTPVPA
QLSQNLEVAATQVAVSVPKRRRIKELNKKEAVGDLLDAFKEVDPVPEVENQPPTGSNPSPESEGS MV
PTQPEETEETWDSKEDIHNAENIQPGEQKYEYKSDQWKPLNLEEKRYDRELLGFQFIFASMQKPEGL
PHITDVVLDKANKTPLRQLDPSRLPGINCGPDFTPSFANLGRPALSNRGP RPGRGGELPRGPAGLGRPR
SQQGRKETRKIISVIMTEDIKLNKAEKAWKPSKRTAADKDRGEEDADGSKTQDLFRRVRSILNKLTP
QMFQQLMKQVTQLAIDTEERLKGVIDLIFEKAISEPNFSVAYANMCRCLMALKVPTTEKPTVTVNFRLKL
LNRCQKEFEKDKDDDEVFEKKQKEMDEAATAEERGLKEELEEARDIARRRSLGNKIFIGELFKLKM L TE
AIMHDCVVKLLKNHDEESLECLRLLTTIGKDLDFAKAKPRMDQYFNQMEKIIKEKKTSSRIRFMLQDVL
DLRQSNWVPRRGDQGPKTIDQIHKEAEMEEHREHIKVQQLMAKGS DKRRGGPPPPINRGLPLVDDGGWN
TVPI SKGSRPIDT SRLTKITKPGSIDSNNQLFAPGGRLSWGKGSSGGSGAKPSDTASEATRPATLNRFSA
LQQTLP AENTDNRRVVQRSSLRERGEKAGDRGDRLE RSEGGDRGDRDRARTPATKRSFSKEVEERSR
ERPSQPEGLRKAASLTEDRGRDPVKREATLPPVSPPKAALSVDEVEKSKAIEEYHLNDMKEAVQC VQ
ELASPLLFIFVRLGIESTLERSTIAREHMGRLLHQLLCAGHLSTAQYYQGLYETLELAEDMEIDIPHW
LYLAELITPILQEDGVPMGELFREITKPLRPMGKATSLLEILGLLCKSMGPKKVGM LWREAGLSWREFL
AEGDVGSGFVAEKKVEYTLGEESEAPGQRTLAFEELRRQLEKLLKDGGSNQRVFDWIDANLNEQQIASNT
LVRALMTTVCYS AII FETPLRVDVQVLKVRARLLQKYL CDEQKELQALYALQALVVTLEQPANLLRMFFD
ALYDEDVVKEDAFYSWESSKDPAEQQGKGVALKSVTAFFNWLREAEDEESDHN
    
```

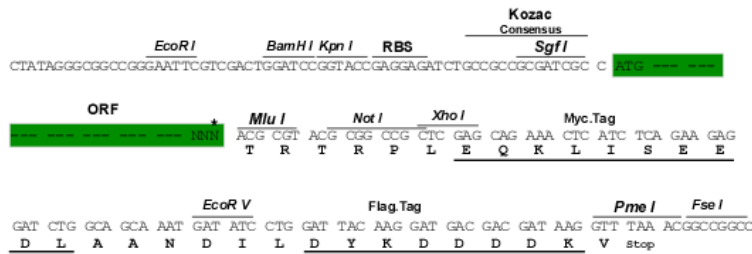
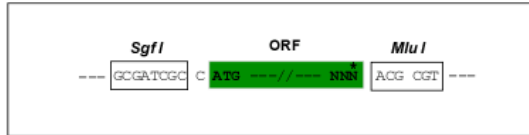
TRTRPLEQKLISEEDLAANDILDYKDDDDKV

Restriction Sites:

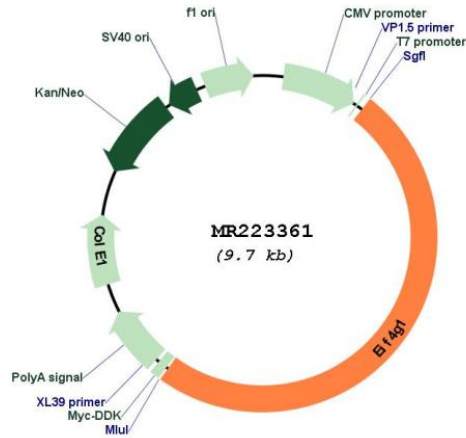
SgfI-MluI

Cloning Scheme:

Cloning sites used for ORF Shuttling:



* The last codon before the Stop codon of the ORF

Plasmid Map:


ACCN: NM_001005331

ORF Size: 4779 bp

OTI Disclaimer: The molecular sequence of this clone aligns with the gene accession number as a point of reference only. However, individual transcript sequences of the same gene can differ through naturally occurring variations (e.g. polymorphisms), each with its own valid existence. This clone is substantially in agreement with the reference, but a complete review of all prevailing variants is recommended prior to use. [More info](#)

OTI Annotation: This clone was engineered to express the complete ORF with an expression tag. Expression varies depending on the nature of the gene.

Components: The ORF clone is ion-exchange column purified and shipped in a 2D barcoded Matrix tube containing 10ug of transfection-ready, dried plasmid DNA (reconstitute with 100 ul of water).

Reconstitution Method:

1. Centrifuge at 5,000xg for 5min.
2. Carefully open the tube and add 100ul of sterile water to dissolve the DNA.
3. Close the tube and incubate for 10 minutes at room temperature.
4. Briefly vortex the tube and then do a quick spin (less than 5000xg) to concentrate the liquid at the bottom.
5. Store the suspended plasmid at -20°C. The DNA is stable for at least one year from date of shipping when stored at -20°C.

RefSeq: [NM_001005331.1](#), [NP_001005331.1](#)

RefSeq Size: 5460 bp

RefSeq ORF: 4782 bp

Locus ID: 208643

Cytogenetics: 16 B1

MW: 175.8 kDa

Gene Summary: This gene encodes a member of the eukaryotic translation initiation factors (eIF) that play important roles in translation initiation by mediating recruitment of additional initiation factors and providing a scaffold for ribosome/mRNA-bridging. Along with eIF4A and eIF4E, the encoded protein forms the eIF4F complex that bridges the 5' UTR with the polyadenylated 3' UTR resulting in mRNA circularization, enhanced translation initiation and mRNA stability. Through its association with eIF3, the encoded protein mediates recruitment of the 43S pre-initiation complex to mRNA. Alternative splicing of this gene results in multiple transcript variants. Pseudogenes for this gene have been identified on chromosomes 2 and 13. [provided by RefSeq, Jan 2015]