

Product datasheet for **MR223345**

Brd3 (NM_023336) Mouse Tagged ORF Clone

Product data:

Product Type:	Expression Plasmids
Product Name:	Brd3 (NM_023336) Mouse Tagged ORF Clone
Tag:	Myc-DDK
Symbol:	Brd3
Synonyms:	2410084F24Rik; AW060456; Fsrg2; ORFX; RINGL3
Mammalian Cell Selection:	Neomycin
Vector:	pCMV6-Entry (PS100001)
E. coli Selection:	Kanamycin (25 ug/mL)



[View online »](#)

ORF Nucleotide Sequence:

>MR223345 ORF sequence
 Red=Cloning site Blue=ORF Green=Tags(s)

TTTTGTAATACGACTCACTATAGGGCGGCCGGGAATTCGTCGACTGGATCCGGTACCGAGGAGATCTGCC
 GCC**CGCATCGCC**

ATGTCCACTACAGCGGCTGCCCCACGGGGATCCCGGCAGTCCCGGGCCCGTGAACCTCCCCACCTG
 AGGTCTCCAACCCAGCAAGCCCGGCGAAAGACTAACCAACTGCAGTACATGCAGAATGTAGTGGTGAA
 GACTCTGGAACATCAGTTTGCTGGCCTTTCTACCAGCCTGTGGATGCAATCAAGCTGAACCTGCCT
 GATTATCATAAAAATAAAAAACCCAATGGACATGGGGACTATCAAGAAGAGACTAGAAAAAATTATT
 ATTGGAGTGCCAGTGAGTGTATGCAGGACTTCAACACCATGTTTACAACTGTTATTTATAAAGCC
 CACAGATGATATAGTGCTAATGGCCAGGCCTTAGAGAAAATCTTTCTGCAGAAAGTGGCCAGATGCCT
 CAGGAGGAAGTTGAACTATTGCCCTGCTCAAAGGGCAAAGGCCGGAAGCCAGCTGCAGGAGCCAAA
 ATGCAGGTTCCCAACAAGTGGCAGCTGTGTCTTCGGTCTCCCAGCAACCCCTTCCAGAACATACCCCC
 CACCGTGTCCAGACACCCGTCATTGCCGCTACCCTGTACCAACCATCACTGCAACAGTCACTGAGTT
 CCAGTCCCCCACCCGCTGCACCGCTCCTCCTGCGACACCCATCGTCCCTGTGGTCCCTCCCACACCGC
 CTGTAGTCAAGAAAAAGGGCGTGAAGCGGAAAGCAGACACAACCACCCACAACATCTGCCATCACTGC
 CAGCCGGAGTGAGTCTCCCCACCACTTTCAGAGCCCAAGCAAGCAAGGTAGTGGCCCGAAGGGAGAGC
 GGGGGCCGCCCATCAAACCTCCCAAGAAGGACCTGGAAGATGGTGGAGTCCCACAGCACGGGTAATA
 AGGGAAAAGTGTCCGAGCACCTGCGGCACTGTGACAGCATCTCCGGGAGATGCTGTCCAAGAAGCATGC
 TGCCATAGCGTGGCCCTTTACAAGCCAGTGGACGCGGAGGCGCTGGAGCTGCATGACTACCATGACATC
 ATCAAGCACCCCATGGACCTCAGCACGGTCAAAGGAAGATGGATAGCCGAGAGTACCCAGATGCACAGG
 GCTTTGCTGCTGATATCCGGTTAATGTTCTCGAATTGTTATAAGTACAACCTCCAGACCAGAAAGTGGT
 GGCCATGGCCAGGAAGCTCCAGGATGTGTTGAGATGAGGTTTGCCAAGATGCCCGATGAGCCCATGGAG
 GCGCCTGCGCTGCCCGCTCCCACGGCCCCATCGTGAGCAAGGGGGCTGAGAGCAGCCGAGTGTGAGG
 AGAGCTCTCAGATTAGGCAGCTCAGACTCAGAAGAGGAGCGAGCCACTCGGCTGGCTGAGCTGCAGGA
 GCAGCTGAAGGCCGTGCACGAACAGCTGGCTGCCTTGTCTCAGGCCCCAGTGAACAAACCAAGAAGAAG
 AAAGAGAAGAAGGAAAAGGAAAAGAAGAAGACAAGGACAAAGACAAGAGAAGGAGAAGCACAAGG
 CCAAGTCTGAGGAGGAGAAGAAGGCCAAGGCAGCCCCAGCAGCCAAGCAGGCCAGCAGAAAAAGGCTCC
 CACCAAGAAGGCCAACAGCACAACCACAGCCAGCAGACAGCTCAAGAAGGGCGGCAAGCAGGCATCTGCG
 TCCTATGACTCAGAGGAAGAGGAGGAGGCGCTGCCATGAGCTATGATGAAAAGCGACAACCTAGCCTTG
 ACATCAACCGGCTGCCCGCGAGAAGCTAGGGCGTGTGGTGCACATCATTAGTCTCGGGAGCCCTCGCT
 TCGGGACTCAAACCCAGACGAGATTGAGATTGACTTTGAGACCCTGAAGCCAACCAGCTGCGGGAAGT
 GAGAGATGTCAAGTCTTGTTTACAAAAAAGCAGAGGAAACCTTGTCAACAAGCGGGAAGAAGCAGG
 CAGCCAAATCGAAAGAGGAGCTAGCTCAGGAGAAGAAAAGGAGCTGGAGAAGCGGCTGCAGGATGTGAG
 TGGAACTGAACAGCAAAAAACCCACTAAGAAAGAGAAGTCCGGCTCAGCTCCCTCAGGAGGCCATCA
 AGGCTCAGCAGTAGCAGCTCCTCTGAGTCTGCGAGCAGTAGCTCCAGTGGATCGAGCTCCGACAGCAGTG
 ACTCAGAG

ACGCGTACGCGGCGCTCGAGCAGAACTCATCTCAGAAGAGGATCTGGCAGCAAATGATATCCTGGATT
 ACAAGGATGACGACGATAAGGTTTAA

Protein Sequence: >MR223345 protein sequence
 Red=Cloning site Green=Tags(s)

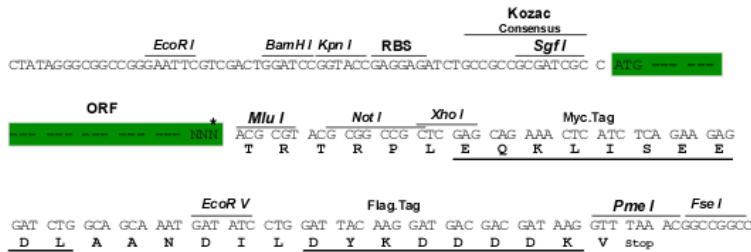
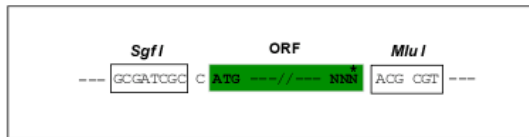
MSTTAAAPTGIPAVPGPVNPPPEVSNPSKPGRKTNLQYMQNVVVKTLWKHQFAWPFYQPVDAIKLNL
 DYHKI IKNPMDMGTIKKRENNYYWSASECMQDFNTMFTNCYIYNKPTDDIVLMAQALEKIFLQKVAQMP
 QEEVELLPAPKKGKRKAAGAQNAGSQVAAVSSVSPATPFQNIPTVSTPVIATPVPTITANVTSV
 PVPPPAAPPPATPIVPVPPPTPPVVKKGGVKKRKTADTTPTTSAITASRSESPPLSEPKQAKVVARRES
 GGRPIKPPKDLLEDGEVPOHAGKKGKLEHLRHCDLREMLSKKHAAYAWPFYKPVDAEALHDYHDI
 IKHPMDLSTVKKRKMDSREYPDAQGFAADIRLMFSNCYKYNPPDHEVVAMARKLQDVFEMRFKMPDEPME
 APALPAPTAPIVSKGAESSRSSEESSDSSGSSDSEERATRLAELQEQLKAVHEQLAALSQAPVVKPKKK
 KEKKEKKEKDKDKDKEKEKHKAKSEEEKKAKAAPAAKQAQKKAPTCKANSTTTASRQLKGGKQASA
 SYDSEEEELPMSYDEKRQLSLDINRLPGEKLRVVIHQSRPESLRDSDNPDEIEIDFETLKPTTLREL
 ERYVKSLQKQKPLSTSGKKQAASKEELAQEKKELEKRLQDVSGQLNSKPKTKKEKSGSAPSGGPS
 RLSSSSSESASSSSSGSSDSSDSE

TRTRPLEQKLISEEDLAANDILDYKDDDDKV

Restriction Sites: SgfI-MluI

Cloning Scheme:

Cloning sites used for ORF Shuttling:



* The last codon before the Stop codon of the ORF

ACCN: NM_023336

ORF Size: 2178 bp

OTI Disclaimer: The molecular sequence of this clone aligns with the gene accession number as a point of reference only. However, individual transcript sequences of the same gene can differ through naturally occurring variations (e.g. polymorphisms), each with its own valid existence. This clone is substantially in agreement with the reference, but a complete review of all prevailing variants is recommended prior to use. [More info](#)

OTI Annotation: This clone was engineered to express the complete ORF with an expression tag. Expression varies depending on the nature of the gene.

Components: The ORF clone is ion-exchange column purified and shipped in a 2D barcoded Matrix tube containing 10ug of transfection-ready, dried plasmid DNA (reconstitute with 100 ul of water).

Reconstitution Method:

1. Centrifuge at 5,000xg for 5min.
2. Carefully open the tube and add 100ul of sterile water to dissolve the DNA.
3. Close the tube and incubate for 10 minutes at room temperature.
4. Briefly vortex the tube and then do a quick spin (less than 5000xg) to concentrate the liquid at the bottom.
5. Store the suspended plasmid at -20°C. The DNA is stable for at least one year from date of shipping when stored at -20°C.

RefSeq: [NM_023336.4](#), [NP_075825.3](#)

RefSeq Size: 5429 bp

RefSeq ORF: 2181 bp

Locus ID: 67382

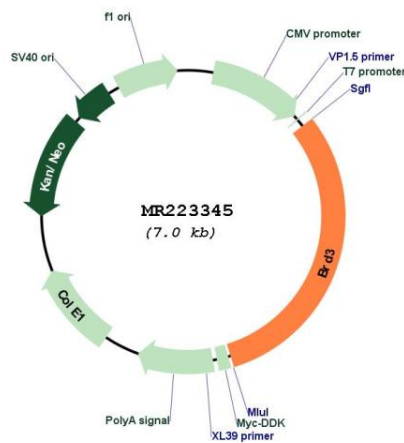
UniProt ID: [Q8K2F0](#)

Cytogenetics: 2 A3

MW: 79.8 kDa

Gene Summary: Chromatin reader that recognizes and binds hyperacetylated chromatin and plays a role in the regulation of transcription, probably by chromatin remodeling and interaction with transcription factors (PubMed:21536911). Regulates transcription by promoting the binding of the transcription factor GATA1 to its targets (PubMed:21536911).[UniProtKB/Swiss-Prot Function]

Product images:



Circular map for MR223345