

## Product datasheet for **MR223221**

### Igfals (NM\_008340) Mouse Tagged ORF Clone

#### Product data:

Product Type:	Expression Plasmids
Product Name:	Igfals (NM_008340) Mouse Tagged ORF Clone
Tag:	Myc-DDK
Symbol:	Igfals
Synonyms:	Albs; ALS; mKIAA4111
Mammalian Cell Selection:	Neomycin
Vector:	pCMV6-Entry (PS100001)
E. coli Selection:	Kanamycin (25 ug/mL)



[View online »](#)

**ORF Nucleotide Sequence:**

>MR223221 ORF sequence  
 Red=Cloning site Blue=ORF Green=Tags(s)

TTTTGTAATACGACTCACTATAGGGCGGCCGGAATTCGTCGACTGGATCCGGTACCGAGGAGATCTGCC  
 GCC**CGGATCGCC**

ATGGCTCTGAGGACAGGAAGCCAGCCCTGGTGGTGTCTTCTGGCTTTCTGGGTGGCACTGGGCCCTGT  
 ACCTGCAGGGGACAGATCCTGGAGCATCAGCAGATGCCGAGGGCCCCAGTGCCCTGTCACTGTACCTG  
 CAGCTATGATGACTACACAGATGAGCTCAGCGTCTTTTGCAGTTCAAGGAACCTCACTCAGCTGCCCGAT  
 GGCATCCCAGTCAGCACCAGGGCTCTGTGGCTTGACGAAACAACCTGTCTCCATCCCCTCAGCGGCCCT  
 TCCAGAACCTGTCCAGCCTAGACTTCTCAACCTGCAGGGCAGCTGGCTGAGGAGCTGGAGCCACAGGC  
 ACTGCTGGGCTGCAGAATCTCTACCATCTGCACCTGGAACGGAACCTGTCCGGAGCCTAGCTGCAGGC  
 TTGTTCCAGACACACCAAGTCTGGCTTCACTCAGTTTGGCAACAACCTCCTGGGCCGGCTGGAAGAAG  
 GGCTGTTCCGGGGCCTCAGTCACCTTTGGGACCTCAACCTGGGTGGAACAGCCTAGTGGTCTGCCTGA  
 CACGGTGTCCAGGGCCTGGGCAACCTCCATGAGCTGGTGTCTGTGGCAACAACTGACTTACCTGCAG  
 CCTGCGCTCTTGTGTGGCTTGGGCGAGCTGCGGGAGCTGGACCTGAGCAGGAACGCTCTCCGAGCGTCA  
 AAGCTAATGTCTTTATACATCTGCCCGGCTGCAGAAGCTCTACCTGGACCGCAACCTCATCACAGCTGT  
 GGCCCCCGTGCCTTCTGGGCATGAAGGCACTGCGTTGGCTGGACCTGTACACAACCGTGTGGCTGGC  
 CTCTGGAGGACACCTTCCCTGGCCTGTGGGTGTGATGTCTGCGCCTGGCACACAACGCCATCACTA  
 GCTTGGCGCCGCTACTTTCAAAGATCTACACTTCTGGAGGAACTGCAGCTCGGCCACAATCGTATCAG  
 GCAGTTAGGTGAGAAGACGTTTGGGGCCTGGGGCAGCTGGAGGTAAGTACTGACGCTCAATGACAATCAGATC  
 CATGAGGTCAAGTGGGCGCCTTCTTGGCCTCTCAACGTGGCTGTTATGAATCTCTCCGGCAACTGTC  
 TGAGGACCTCCCCGAGCATGTGTTCCAAGGGCTGGGCAGGCTGCACAGCTTGCACCTGACAGCTG  
 CCTGGGCCGATCCGCTGCACACTTTCGCCGGCCTCTCAGGGCTGCGCAGGCTCTTCTCCGGGACAAC  
 AGCATCTCCAGCATCGAAGAACAGGCCTGGCAGGGCTCTCAGAGCTCCTGGAACCGATCTTACGCCA  
 ACCAGCTCACACATCTGCCCGCCAGCTTTTCCAGGGCCTTGGCCAGCTGGAATATCTGCTTCTGTCCAA  
 CAACCAACTGACAATGCTCTCTGAGGATGTCTGGGCCCTCTGCAGCGGGCCTTCTGGCTGGACCTCTCA  
 CACAACCGCCTCGAGACCCCGCTGAAGGCCTTTTCTCATCTCTGGGGCGGCTTCTGCTACCTCAACCTCA  
 GGAATAACTCCTGCAGACTTTTGTGCCACAGCCTGGCCTGGAGCGCCTGTGGCTCGATGCCAACCCCTG  
 GGACTGCAGTTGTCCCCTCAAGGCGCTTCTGTACTTTGCCCTACAGAACCCTGGTGTGTCCCCGCTTT  
 GTTCAGACTGTCTGTGAGGGAGATGACTGCCAGCCGGTACACTTACAACAACATCACTTGTGCTGGCC  
 CCGCCAACGTCTCAGGCCTCGACCTTCGAGACATCAGTGAACACTCTTGTGCACTGC

**ACGCGT**ACGCGGGCCGCTCGAGCAGAAACTCATCTCAGAAGAGGATCTGGCAGCAAATGATATCCTGGATT  
 ACAAGGATGACGACGATAAGGTTTAA

**Protein Sequence:**

>MR223221 protein sequence  
 Red=Cloning site Green=Tags(s)

MALRTGSPALVLLAFWVALGPCYLQGTDPGASADAEGPQCPVTCTCSYDDYTDEL SVFCSRNLTQLPD  
 GIPVSTRALWLDGNNLSSIPSAAFQNLSSLDLNLQGSWLRSLQEPQALLGLQNL YHLHLERNLLRSLAAG  
 LFRHTPSLASLSLGNLLGRLEGLFRGLSHLWDLNLGWNSLVLPDVFQGLGNLHELVLAGNKLTYLQ  
 PALLCGLGELRELDL SRNALRSVKANVF IHLPRLQKL YLDRNLITAVAPRAFLGMKALRWLDL SHNRVAG  
 LLEDTFPGLLGLHVLRLAHNAITSLRPRTFKDLHFL EELQLGHNRI RQLGEKTFEGLGQLEVL TLNDNQI  
 HEVKVGAFFGL FNVAVMNL SGNCLRSL PEHV FQGLGRLHSLHLEHSCLGRIRLHTFAGL SGLRRLFLRDN  
 SISSIEEQSLAGLSELLELDLTANQL THLPRQLFQGLGQLEYLLSNNQL TMLSEV LGLPQLRAF WLDLS  
 HNRLETPAEGLFSSLGRLRYLNLRNNSLQTFVPQPGLERLWLDANPWDCSCLKALRDFALQNPVGVPRF  
 VQTVCEGDDCQPVYTYNNITCAGPANVSGLDLDRDISETL FVHC

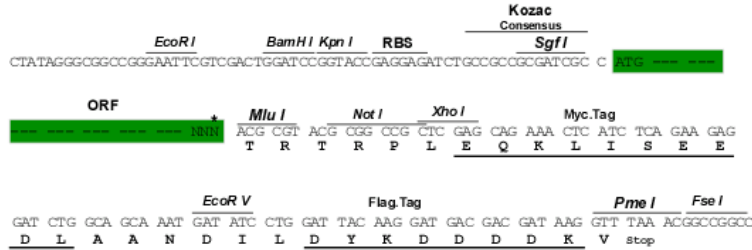
**TR**TRPLEQKLISEEDLAANDILDYKDDDDKV

**Restriction Sites:**

SgfI-MluI

**Cloning Scheme:**

Cloning sites used for ORF Shutting:



\* The last codon before the Stop codon of the ORF

**ACCN:** NM\_008340

**ORF Size:** 1812 bp

**OTI Disclaimer:** The molecular sequence of this clone aligns with the gene accession number as a point of reference only. However, individual transcript sequences of the same gene can differ through naturally occurring variations (e.g. polymorphisms), each with its own valid existence. This clone is substantially in agreement with the reference, but a complete review of all prevailing variants is recommended prior to use. [More info](#)

**OTI Annotation:** This clone was engineered to express the complete ORF with an expression tag. Expression varies depending on the nature of the gene.

**Components:** The ORF clone is ion-exchange column purified and shipped in a 2D barcoded Matrix tube containing 10ug of transfection-ready, dried plasmid DNA (reconstitute with 100 ul of water).

- Reconstitution Method:**
1. Centrifuge at 5,000xg for 5min.
  2. Carefully open the tube and add 100ul of sterile water to dissolve the DNA.
  3. Close the tube and incubate for 10 minutes at room temperature.
  4. Briefly vortex the tube and then do a quick spin (less than 5000xg) to concentrate the liquid at the bottom.
  5. Store the suspended plasmid at -20°C. The DNA is stable for at least one year from date of shipping when stored at -20°C.

**RefSeq:** [NM\\_008340.1](#)
**RefSeq Size:** 2111 bp

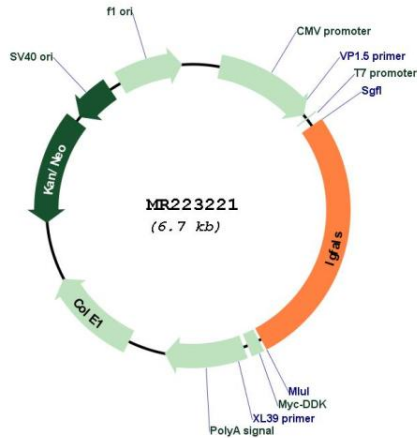
**RefSeq ORF:** 1812 bp

**Locus ID:** 16005

**UniProt ID:** [P70389](#)

Cytogenetics: 17 12.53 cM  
 MW: 67 kDa  
 Gene Summary: May have an important role in regulating the access of circulating IGFs to the tissues.  
 [UniProtKB/Swiss-Prot Function]

**Product images:**



Circular map for MR223221