

Product datasheet for MR223195

Vmn1r66 (NM_134230) Mouse Tagged ORF Clone

Product data:

Product Type:	Expression Plasmids
Product Name:	Vmn1r66 (NM_134230) Mouse Tagged ORF Clone
Tag:	Myc-DDK
Symbol:	Vmn1r66
Synonyms:	S67; V1re3; V1re11
Mammalian Cell Selection:	Neomycin
Vector:	pCMV6-Entry (PS100001)
E. coli Selection:	Kanamycin (25 ug/mL)
ORF Nucleotide Sequence:	>MR223195 ORF sequence Red=Cloning site Blue=ORF Green=Tags(s)

TTTTGTAATACGACTCACTATAGGGCGGCCGGAATTCGTCGACTGGATCCGGTACCGAGGAGATCTGCC
GCC**CGATCGCC**

ATGCCCAATCATAAAATAGACTTAGGGAATCTATCAATCAAAATCATTTCCTTATTACAAACTACAGTTG
GAATTTGGGAAATTTCTATCTTCTTATACTACATCTAGTCTACTATGCAGAATACACTTTAAAGCACAC
AGCTTTGATTCTCATGCACCTCTGGGGAGCCAATGCCTTGATAGTTCTTTCTACAGGAGTGCCCTACACA
ATGGCAGCTTTGGGTTGAAGCAGTTTTAAATGACTTTGGCTGCAGATTAAGTTTGTACATTCAAAGAC
TTGGTCGGAGTGTGCCATTGGCACCACCTGTTTTTGTAGTGTCTCCAAGCCATCACCATCAGTCACAG
AGAATCTTGTTGTAAGATCAAAAAGCCAAAGTTGCAAAGTATATTGGCTTCTCCATTTCTTCTCTCGG
GTTTTGTCCATCTTTATACATTTCAATTTCTTTCTGAAAATATTTCTCAAAGGAATAGCAAAAACATGA
CAAGGAAGCTAGATTTTGAGTACTGCTCCTATGTTAACCATTTTGAAATTAATTACTCAGTTTATGCAGC
ATTAGTGATGTGCCCTGAAATCTTCCTTCTGTGGTCAATGCCTGGTCCAGTGGCTCTATGACTGTCATT
CTATACAGACATAAGAAGAGAGTTCAACACATCCACAGCTCTCAGGTTCCAGAAGAACTCCCCGAAT
CCAGAGCCATCCAGACAATCCTGTCCCTAGTGTTTTTCTTTCTGGCTTTTACACTCTCTCCTCCATCTT
ACGAGGTTACATTGCTCTCGTGCATAATCCAAGTTGGTGTCTGGTGATGGTCAATCGCCTCACTTCTCTC
TGTTTTCCATCTTTGGACCTTTTGTCTTATAAATAATTACTCTGTTAGGCCAAGACTAAGTTTGGTCT
GGATGAGAAATATCAACCCT

ACGCGTACGCGGCCGCTCGAGCAGAAACTCATCTCAGAAGAGGATCTGGCAGCAATGATATCCTGGATT
ACAAGGATGACGACGATAAGGTTTAA



[View online »](#)

Protein Sequence: >MR223195 protein sequence
Red=Cloning site Green=Tags(s)

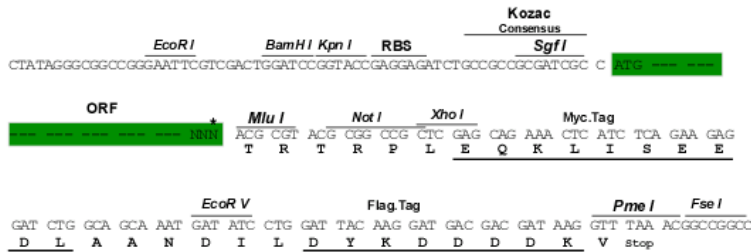
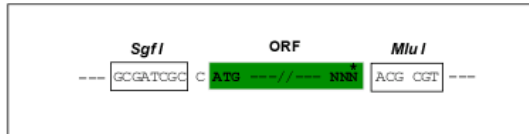
MPNHKIDLGNLSIKIIFLLQTTVGILGNFYLLILHLVYYAEYTLKHTALILMHLWGANALIVLSTGVPYT
 MAAFGLKQFLNDFGCRLSLYIQRGRSVSIGTTCFLSVFQAITISHRESCCKDQKAKVAKYIGFSIFLLW
 VLSIFIHFIFFLIEIFLKRNSKNMTRKLDFFEYCSYVNHFEINYSVYAALVMCP EIFLSVVIWSSGSM TVI
 LYRHKRVQHIHSSQVSRRN SPESRAIQITILSLVFFFLAFYTLSSILRGYIALVHNPSWCLVMVNR L TSL
 CFPSFGPFVLI NNYSVRPRLSLVWMRNINP

TRTRPLEQKLISEEDLAANDILDYKDDDDKV

Restriction Sites: SgfI-MluI

Cloning Scheme:

Cloning sites used for ORF Shuttling:



* The last codon before the Stop codon of the ORF

ACCN: NM_134230

ORF Size: 933 bp

OTI Disclaimer: The molecular sequence of this clone aligns with the gene accession number as a point of reference only. However, individual transcript sequences of the same gene can differ through naturally occurring variations (e.g. polymorphisms), each with its own valid existence. This clone is substantially in agreement with the reference, but a complete review of all prevailing variants is recommended prior to use. [More info](#)

OTI Annotation: This clone was engineered to express the complete ORF with an expression tag. Expression varies depending on the nature of the gene.

Components: The ORF clone is ion-exchange column purified and shipped in a 2D barcoded Matrix tube containing 10ug of transfection-ready, dried plasmid DNA (reconstitute with 100 ul of water).

Reconstitution Method:

1. Centrifuge at 5,000xg for 5min.
2. Carefully open the tube and add 100ul of sterile water to dissolve the DNA.
3. Close the tube and incubate for 10 minutes at room temperature.
4. Briefly vortex the tube and then do a quick spin (less than 5000xg) to concentrate the liquid at the bottom.
5. Store the suspended plasmid at -20°C. The DNA is stable for at least one year from date of shipping when stored at -20°C.

RefSeq: [NM_134230.1](#), [NM_134230.2](#), [NM_134230.3](#), [NP_598991.2](#)

RefSeq Size: 1524 bp

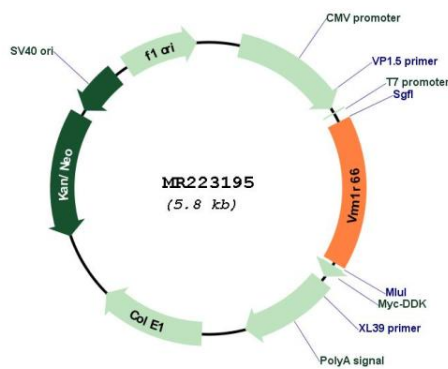
RefSeq ORF: 933 bp

Locus ID: 171264

Cytogenetics: 7 A1

MW: 35.7 kDa

Product images:



Circular map for MR223195