

## Product datasheet for **MR223175**

### **Fbxl4 (NM\_172988) Mouse Tagged ORF Clone**

#### **Product data:**

Product Type:	Expression Plasmids
Product Name:	Fbxl4 (NM_172988) Mouse Tagged ORF Clone
Tag:	Myc-DDK
Symbol:	Fbxl4
Synonyms:	A1836810; FBL4; FBL5
Vector:	pCMV6-Entry (PS100001)
E. coli Selection:	Kanamycin (25 ug/mL)
Cell Selection:	Neomycin



[View online »](#)

**ORF Nucleotide Sequence:**

>MR223175 representing NM\_172988  
 Red=Cloning site Blue=ORF Green=Tags(s)

TTTTGTAATACGACTCACTATAGGGCGGCCGGAATTCGTCGACTGGATCCGGTACCGAGGAGATCTGCC  
 GCC**GCGATCGCC**

ATGTCACCACTCTTTCCCATGTTAACAGTTCTGACCATGTTTTATTATATGTGCCTTCGGCTCGAGCCA  
 GGACAGCTACAAGAGGAGATATGATGAACAGCCATAGGACTATAGTGCAACAGCCGACTTCCCCTCT  
 CAATGCAGAGGTGGTCCAGTATGCTAAAGAAGTGGTGGATTTTCAGTTCCATTACGGCAGTGAGAACAGT  
 ATGTCCTATACCATGTGGAATTTGGCAGGTGTACCAAAATGTTCCCAAGTTCTGGTGACTTCACGCAGA  
 CGGCTGTGTTTGAACCTATGGGACGTGGTGGGATCAGTGTCTAGTGCTTCTTGCCATTACAGAAGGAC  
 ACCGTCAGTTTCCAGAGCCAGGACTATGTGGAAGTACTTTTGGCAGCAAGTGTACCCACGGCTGTC  
 CATGTGCTGGAGACTTACCATCCTGGAGCAGTCATCAGAATTCTGGCCTGCTCAGCAAATCCCTACTCCC  
 CAAATCCTCCAGCTGAAGTAAGATGGGAGATTCTTTGGTCAGAGAGACCTATGAAGGTGAATGCTTCCCA  
 GGCTCGTCAGTTAAACCTTGATTAAGCAAATAAATTTCCCTACAAACCTCATACGACTGGAAGTCAAT  
 AGTTCTCTTCTGGATTATTACACCGAACTAGATGCAGTTGTGCTGCATGGTACGAAGGACAAGCCACTGC  
 TCTCTCTCAAGACTGCTCTTGTAGACATGAATGATCTAGAAGATGACGACTATGAAGAGAAGGATGGCTG  
 TGAGATGGATGCTCTTAAACAAAAGTTTAGCAGTGTGCCCTTGGGGATGGGCCACATAATGGGTATTTT  
 GACAACTACCATATGAGCTCATTCAACTGATTCTGAATCATCTTCTACTACCAGACCTGTGTAGATTAG  
 CCCAGACTTGCAGGCTTCTCCACCAGCATTGCTGTGATCCTCTGCAATATATCCACCTCAACCTGCAGCC  
 ATACTGGGCCCGCTGGACGACAGTCACTGGAGTTCCTACAGGCTCGCTGTGTGCTTGTCCAGTGGCTT  
 AATCTGTCTTGGACTGGCAACAGAGGGTTCATCTGTATCAGGATTTAGCAGGTTTCTAAAGGTGTGTG  
 GGTCTGAGTTAGTACGCCTTGAGTTATCCTGCAGCCACTTTCTTAAAGTACTGCTTGGAGGTTATTTT  
 TGAAATGTGCCCAAATCTACAAGACTTAAATCTCTCATCCTGCGATAAACTCCACCTCAGGCTTTTGGC  
 CATATTGCCAAGTTATGCAGCCTCAAGAGGCTTGTCTCTATCGGACAAAAGTAGAGCAAACAGCACTAC  
 TGAGCATTTTGAACCTTGTGTCAGAGCTTACGACCTCAGCCTGGGCAGCTGTGTGATGATTGAAGATTA  
 TGATGTGATAGCCAGCATGATAGGAGCCAAGTGTAAAACTGCGGACTTTGGATCTGTGGAGATGCAAG  
 AATATCACCGAGAATGGGATAGCAGAGTTGGCTTCTGGCTGTGTTCTTCTTGAGGAACCTGACCTTGGCT  
 GGTGCCACCCTTCCAGAGCAGCACTGGGTGCTTTGTGACTGGCAGCCAGCTCCCAAACCTGCAGAA  
 ACTCTTCTTACAGCTAACAGGTCTGTGTGACACAGACATAGAAGAACTGGCATCTAATTGTACCAGA  
 TTACAGCAACTGGACATATTAGGAACAAGAAATGGTAAGTCCAGCATCCTTGAAGAACTCCTGGAATCTT  
 GCAAAGATCTTTCCCTACTTACAGTGTCTTCTGTCCAGATTGATAACAAGGCTGTGTTAGAGCTCAA  
 CGCGAGCTTTCCGAAAGTCTTCATAAAGAAGAGCTTTACTCAA

**ACGCGT**ACGCGGCCGCTCGAGCAGAACTCATCTCAGAAGAGGATCTGGCAGCAAATGATATCCTGGATT  
 ACAAGGATGACGACGATAAGGTTTAA

**Protein Sequence:**

>MR223175 representing NM\_172988  
 Red=Cloning site Green=Tags(s)

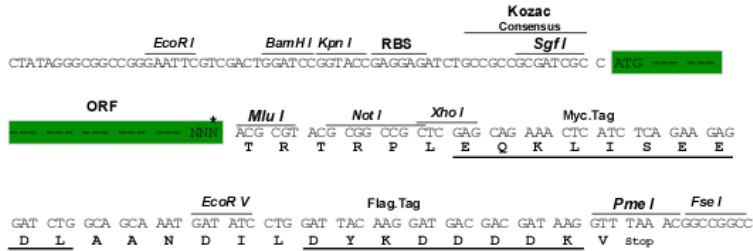
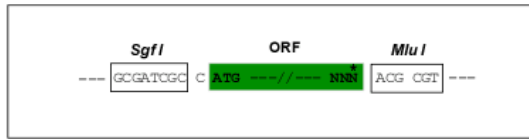
MSPVFPMLTVLTMFYMLRRRARTATRGDMNSHRTIVNSRSTPLNAEVVQYAKEVVDVSSHYSSENS  
 MSYTMWNLAGVPNVFPSSGDFQTAVFRTYGTWWDQCPASLPPFRPTSSFSQDYVELTFEQVYPTAV  
 HVLETYHPGAVIRILACSANPSPNPPAEVRWEILWSERPMKVNASQARQFKPCIKQINFPTNLIRLEVN  
 SSLLDYYTELDAVVLHGTDKPLLSLKTALVDMNDLEDDDYEEKDGCMDALNKKFSSAALGDGPHNGYF  
 DKLPYELIQLILNHLSPDLRLAQTCLLHQHCCDPLQYIHLNLQPYWARLDDTSLFLQARCVLVQWL  
 NLSWTGNRGFISVSGFSRFLKVCSELVRELESCSHFLNDTCLEVISSEMCPNLQDLNLSCKDLPPQAFG  
 HIAKLCSLKRLVLYRTRKVEQTALLSILNFCALQHLSLGSCVMIEDYDVIASMIGAKCKNLRDLWRCK  
 NITENGLAELASGCVLLEELDLGWCPTLQSSTGCFVRLARQLPNLQKFLFLTANRSVCDTIEELASNCTR  
 LQQLDILGTRMVSASLRKLLKLECKDLSLLDVDFSCQIDNKAVLELNASFPKVFIKKSFTQ

**TRTRPLEQKLISEEDLAANDILDYKDDDDKV**

Restriction Sites: SgfI-MluI

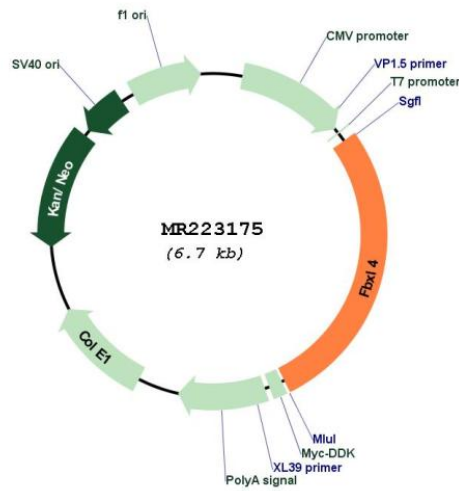
Cloning Scheme:

Cloning sites used for ORF Shuttling:



\* The last codon before the Stop codon of the ORF

Plasmid Map:



ACCN: NM\_172988

ORF Size: 1863 bp

<b>OTI Disclaimer:</b>	The molecular sequence of this clone aligns with the gene accession number as a point of reference only. However, individual transcript sequences of the same gene can differ through naturally occurring variations (e.g. polymorphisms), each with its own valid existence. This clone is substantially in agreement with the reference, but a complete review of all prevailing variants is recommended prior to use. <a href="#">More info</a>
<b>OTI Annotation:</b>	This clone was engineered to express the complete ORF with an expression tag. Expression varies depending on the nature of the gene.
<b>Components:</b>	The ORF clone is ion-exchange column purified and shipped in a 2D barcoded Matrix tube containing 10ug of transfection-ready, dried plasmid DNA (reconstitute with 100 ul of water).
<b>Reconstitution Method:</b>	<ol style="list-style-type: none"> <li>1. Centrifuge at 5,000xg for 5min.</li> <li>2. Carefully open the tube and add 100ul of sterile water to dissolve the DNA.</li> <li>3. Close the tube and incubate for 10 minutes at room temperature.</li> <li>4. Briefly vortex the tube and then do a quick spin (less than 5000xg) to concentrate the liquid at the bottom.</li> <li>5. Store the suspended plasmid at -20°C. The DNA is stable for at least one year from date of shipping when stored at -20°C.</li> </ol>
<b>RefSeq:</b>	<a href="#">NM_172988.4</a> , <a href="#">NP_766576.1</a>
<b>RefSeq Size:</b>	2479 bp
<b>RefSeq ORF:</b>	1866 bp
<b>Locus ID:</b>	269514
<b>UniProt ID:</b>	<a href="#">Q8BH70</a>
<b>Cytogenetics:</b>	4 A3
<b>MW:</b>	70.7 kDa