

Product datasheet for **MR223173**

Asph (NM_001177855) Mouse Tagged ORF Clone

Product data:

Product Type: Expression Plasmids
Product Name: Asph (NM_001177855) Mouse Tagged ORF Clone
Tag: Myc-DDK
Symbol: Asph
Synonyms: 2310005F16Rik; 3110001L23Rik; AI848629; AW261690; AW561901; BAH; C79816; cl-37
Mammalian Cell Selection: Neomycin
Vector: pCMV6-Entry (PS100001)
E. coli Selection: Kanamycin (25 ug/mL)
ORF Nucleotide Sequence: >MR223173 representing NM_001177855
Red=Cloning site Blue=ORF Green=Tags(s)

TTTTGTAATACGACTCACTATAGGGCGGCCGGAATTCGTCGACTGGATCCGGTACCGAGGAGATCTGCC
GCC**CGATCGCC**

ATGGCCCCGCGCAAGAACGCCAAGGGCGGCGGGCAACAGCAGCAGCAGCGGCAGCGGCAGCGGCTCGG
GCAGCGGTAGCCCGAGCACGGGTAGCAGCGGTAGCAGCAGTAGCCCCGGGGCTCGGAGAGAGGCAAAGCA
CGGAGGACACAAGAATGGGAGAAGAGGAGGGATTCAGGAGGGTCCTTTTTCACATGGTTCATGGTCATT
GCATTGCTCGGCTCTGGACATCTGTGGCTGTCGTGTGGTTTACTTGGTCGATTATGAAGAAGTCTAG
GAAAAGTGGAGTCTATGATGCGGATGGCGATGGAGACTTTGATGTGGATGATGCCAAAGTTTTATTAGA
AGGACCTGGTGGTTAGCCAAGAGGAAAATAAGGCTAAAGCTAAAGAACCATCAAAGAAGAGCTGAAG
AAGGAGAGAGGGAAGCTGTGCCTAGCAAGAATGAAGAGCGAAGGCAGGGGAAGAAGGAGCAGGAGGATA
GAGGGAAGGGGAGGAAGAAGCCTGACTCAGACACATCCCAGAAAGCATCCGCTGCAGGGAAGAGAGACAG
AGACAAGGAGAAAGCCAGCTCTGACAAGAGTTCCAAGTCTAAGGAAAGCTGGAAGAAGGCCGTAGAGACA
AAGGCTGTTTCTAGTAAAGTGGCTGCCAGAGACAAAGACAGGCGGAGGAAGAAGCTCCTCTGGCATGCTC
ACGTCGCCAAGGAAAATGGCCAGAAGAGAAAGAAC

ACGCGTACGCGGCCGCTCGAGCAGAAACTCATCTCAGAAGAGGATCTGGCAGCAAATGATATCCTGGATT
ACAAGGATGACGACGATAAGGTTTAA



Protein Sequence: >MR223173 representing NM_001177855
Red=Cloning site Green=Tags(s)

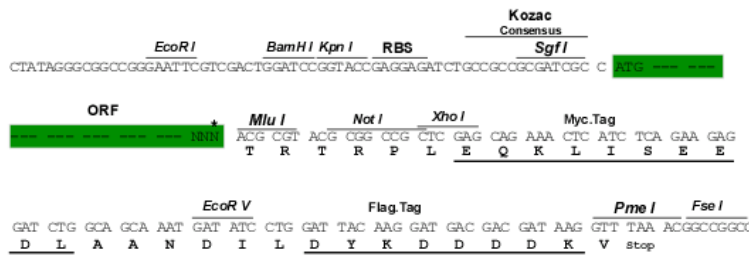
MAPRKNAKGGGNSSSSGSGSGSGSPSTGSSGSSSSPGARREAKHGHHKNGRRGGISGGSFFTWFMVI
 ALLGVWTSVAVVWFDLVDYEEVLGKLGVDADGDGDFDVDDAKVLLLEPGGLAKRRTKAKAKEPIKEELK
 KER GKAVPSKNEERRQKKKEQEDRGKGRKKPDSDTSSQKASAAGKRDRDKEKASSDKSSSKESWKKAVET
 KAVSSKVAARDKDRRGRSSSGHAHVAKENGQKRKN

TRTRPLEQKLISEEDLAANDILDYKDDDDKV

Restriction Sites: Sgfl-MluI

Cloning Scheme:

Cloning sites used for ORF Shuttling:



* The last codon before the Stop codon of the ORF

ACCN: NM_001177855

ORF Size: 735 bp

OTI Disclaimer: The molecular sequence of this clone aligns with the gene accession number as a point of reference only. However, individual transcript sequences of the same gene can differ through naturally occurring variations (e.g. polymorphisms), each with its own valid existence. This clone is substantially in agreement with the reference, but a complete review of all prevailing variants is recommended prior to use. [More info](#)

OTI Annotation: This clone was engineered to express the complete ORF with an expression tag. Expression varies depending on the nature of the gene.

Components: The ORF clone is ion-exchange column purified and shipped in a 2D barcoded Matrix tube containing 10ug of transfection-ready, dried plasmid DNA (reconstitute with 100 ul of water).

Reconstitution Method:

1. Centrifuge at 5,000xg for 5min.
2. Carefully open the tube and add 100ul of sterile water to dissolve the DNA.
3. Close the tube and incubate for 10 minutes at room temperature.
4. Briefly vortex the tube and then do a quick spin (less than 5000xg) to concentrate the liquid at the bottom.
5. Store the suspended plasmid at -20°C. The DNA is stable for at least one year from date of shipping when stored at -20°C.

RefSeq: [NM_001177855.1](#), [NP_001171326.1](#)

RefSeq Size: 1960 bp

RefSeq ORF: 738 bp

Locus ID: 65973

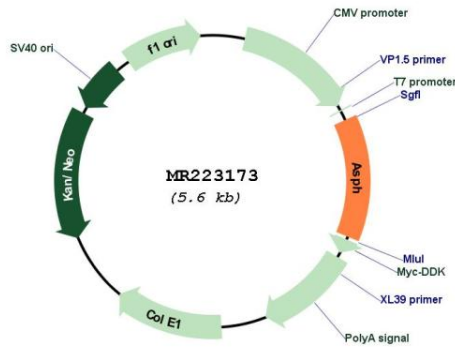
UniProt ID: [Q8BSY0](#)

Cytogenetics: 4 A1

MW: 26.4 kDa

Gene Summary: Isoform 1: specifically hydroxylates an Asp or Asn residue in certain epidermal growth factor-like (EGF) domains of a number of proteins.[UniProtKB/Swiss-Prot Function]

Product images:



Circular map for MR223173