

## Product datasheet for **MR223129**

### Cask (NM\_009806) Mouse Tagged ORF Clone

#### Product data:

Product Type:	Expression Plasmids
Product Name:	Cask (NM_009806) Mouse Tagged ORF Clone
Tag:	Myc-DDK
Symbol:	Cask
Synonyms:	DXPri1; DXRib1; LIN-2; mLin-2; Pals3
Mammalian Cell Selection:	Neomycin
Vector:	pCMV6-Entry (PS100001)
E. coli Selection:	Kanamycin (25 ug/mL)



[View online »](#)

ORF Nucleotide  
Sequence:

>MR223129 representing NM\_009806  
 Red=Cloning site Blue=ORF Green=Tags(s)

TTTTGTAATACGACTCACTATAGGGCGGCCGGAATTCGTCGACTGGATCCGGTACCGAGGAGATCTGCC  
 GCC**CGGATCGCC**

ATGGCCGACGACGACGTGCTGTTCGAGGATGTGTACGAGCTATGCGAGGTGATCGGCAAGGTTCCCTTCA  
 GTGTTGTACGGCGATGTATCAACAGAGAACTGGGCAACAATTTGCTGTAAAAATTTGTTGATGTAGCCAA  
 GTTCACATCAAGTCCAGGTTAAGTACAGAAGATCTAAAGCGGGAAGCCAGTATCTGTATATGCTGAAG  
 CATCCACACATTGTAGAGCTGTTGGAGACATATAGCTCAGATGGGATGCTTTACATGGTTTTGAATTTA  
 TGGATGGAGCAGATCTGTGTTTTGAAATCGTAAAGCGAGCTGATGCTGGTTTTGTATACAGTGAAGCTGT  
 AGCCAGCCACTACATGAGACAGATACTGGAAGCTCTGCGCTACTGTCATGATAATAACATAATTCACAGG  
 GACGTGAAGCCCACTGTGTTCTCCTTGCCTCAAAGAAAACCTCGGCACCTGTTAACTTGGGGCTTTG  
 GGGTGGCCATTAGTTCAGTACAGGAACTCTGGACTTGTGCTGGAGGCCGCTTGAACACCTCACTTTATGGC  
 CCCAGAAGTGGTCAAGAGAGAGCCTTACGGAAAGCCTGTGGATGTCTGGGCTGTGGTGTATCCTTTTC  
 ATCCTGCTCAGTGGCTGTTTGCCTTTCTACGGAAACCAAGGAAAGATTGTTTGAAGGCATTATTAAGGAA  
 AATATAAGATGAATCCAAGGCAGTGGAGCCATATCTCTGAAAGTGCCAAAGACCTAGTACGCCGATGCT  
 GATGCTGGATCCTGCTGAAAGGATCACTGTTTATGAAGCACTGAATCACCCATGGCTTAAGGAGCGGGAT  
 CGTTATGCCTACAAAATCCATCTTCCAGAAACAGTAGAACAACCTGAGGAAATTCATGCAAGGAGAAAAAC  
 TAAAGGTGACGACTAGCTGCTGTGTCAAGTCAAAAATCAATTCCTTCTATGGGGACCTCCTGAAGA  
 GTTGCCAGATTTCTCCGAAGACCCTACCTCCTCAGGAGCCGCTCTCAGGTGCTGGACAGCCTGGAAGAG  
 ATTCACGCACTTACAGACTGCAGTGAAGGACCTAGATTTTCTACACAGTGTTCAGGATCAACATC  
 TTCACACTGCTGGATCTGTATGACAAAATTAACACAAAAGCTTCGCCACAAATCAGGAATCCTCCAAG  
 TGATGCAGTACAGAGAGCCAAAGAGGTATTGGAAGAAATTTTCATGTTACCCTGAGAATAATGATGCGGAAG  
 GAACTAAAGCGTATTTTAAACACAACCTCATTTCATGGCCTTACTTCAGACTCATGATGTAGTGGCAGATG  
 AAGTTTACAGTGTGAAGCATTAAAGGTCACACCTCCCCGACTTCCCCCTATTTAAACGGTGATTTCTCC  
 AGAAAGTGCAAAACGGAGACATGGACATGGAGAATGTGACCAGAGTTCGGCTGGTACAGTTCAAAAAGAAC  
 ACGGATGAGCCAATGGGAATCACTTTGAAAATGAATGAGCTAAATCATTGTATTGTGCGAAGAAATCATGC  
 ATGGGGGTATGATTCACAGGCAAGGTACACTTCATGTTGGTGTGAAATCCGAGAAATCAATGGCATCAG  
 TGTCGCTAACCAACAGTGAAGCAGCTACAGAAAATGCTTAGGGAAATGCGAGGGAGTATTACCTTCAAG  
 ATTTGTGCCAAGCTACCGCACTCAGTCTTCTGCTGTGAGGACTTGCCATCAACCACCAACCAAAAGGAC  
 GACAGATCTATGTAAGAGCAAAATTTGAATATGATCCAGCCAAGGATGACCTCATCCCCTGCAAAGAAGC  
 TGGCATCCGGTCCGAGTTGGTGACATCATCCAGATTATTAGTAAGGATGACCACAACCTGGTGGCAGGGT  
 AAAGTGGAAAACCTCAAAAATGGAAGTGCAGGTCTCATTCTTCTCCTGAACTTCAGGAATGGCGAGTAG  
 CTTGCAATTGCCATGGAGAAGACCAAAACAAGAGCAGCAGGCCAGCTGACTTGGTTTGGCAAGAAAAAGAA  
 GCAGTACAAAGATAAATATTTGGCAAAGCACAACGCAAGTGTGATCAATTAGATCTTGTACATATGAA  
 GAAGTAGTCAAAGTCCAGCATTCAAAGGAAAACATTAGTCTTATTAGGTGCACATGGTGTGGAAGAA  
 GACACATAAAAAATACCCTCATCACAAGCACCCTGG[AT]CCGGTTTGGTACCTTATCCACATACAAC  
 CAGACCTCAAAGAAAAGATGAAGAAAATGGCAAGAATTACTTTGTATCTCATGACCAAAATGATGCAA  
 GACATCTCAAATAACGAATACTTGGAGTATGGCAGCCATGAGGATGCAATGTACGGGACAAAACCTGGAGA  
 CCATTCGAAAAATCCATGAGCAGGGGCTGATTGCGATTCTGGACGTGGAGCCTCAGGCACTGAAGGTCTT  
 GAGGACTGCAGAGTTTGTCTTTTGTGCTTTCATTGCGGCGCAACTATCACTCCAGGTTTAAATGAG  
 GATGAATCTTTCAGCGCCTGCAGAAGGAGTCCGATGTCTTGAGAGAACATATGCACACTACTTCGATC  
 TCACAATTATCAACAACGAAATTTGATGAGACAATCAGACATCTGGAAAGAGCTGTCGAGCTTGTGTGCAC  
 AGCCCCACAGTGGTCCCAGTCTCCTGGTCTAT

**ACCGGT**ACGGCGCCGCTCGAGCAGAAACTCATCTCAGAAGAGGATCTGGCAGCAATGATATCCTGGATT  
 ACAAGGATGACGACGATAAGGTTTAA

Protein Sequence: >MR223129 representing NM\_009806  
 Red=Cloning site Green=Tags(s)

MADDDVLFEDVYELCEVIGKGPFSVVRRCINRETGQQFAVKIVDAKFTSSPGLSTEDLKREASICHMLK  
 HPHIVELLEITYSSDGLMYVFEFMDGADLCFEIVKRADAGFVYSEAVASHYMRQILEALRYCHDNNIHR  
 DVKPHCVLLASKENSAPVKLGGFGVAIQLGESGLVAGGRVGTPHFMAPEVVKREPYGKPDVWGCQVILF  
 ILLSGCLPFYGTKERLFEIGIKGKYKMNPRQWSHISESAKDLVRRMLMLDPAERITVYEALNHPWLKERD  
 RYAYKIHLPETVEQLRKFNARRKLGAVLAAVSSHKFNFSFYGDPEELPDFSEDPTSSGAVSQVLDLLEE  
 IHALTDCSEKDLDFLHSVFQDQHLHTLLDLYDKINTKSSPQIRNPPSDAVQRAKEVLEEISCPENNDKAK  
 ELKRILTQPHFMALLQTHDVVAHEVYSDEALRVTPPTSPYLNQDSPESANGMDMENVTRVRLVQFQKN  
 TDEPMGITLKMNELNHCIVARIMHGGMIHRQGTLVHGDEIREINGISVANQTVEQLQKMLREMRGSITFK  
 IVPSYRTQSSCEDLPSTTQPKGRQIYVRAQFEYDPAKDDLIPCKEAGIRFRVGDIIQIISKDDHNWWQG  
 KLENSKNGTAGLIPSELQEWVACIAEKTQEQQASCTWFGKKKKQYKDKYLAKHNAVFDQLDLVTEYE  
 EVVKLPAFKRKTLLVLLGAHGVRRRIKNTLITKHPXXRFAYPIPHTRPPKDEENGKNYFVSHDQMMQ  
 DISNNEYLEYGSHEDAMYGTKLETIRKIHQGLIAILDVEPQALKVLRRTAEFAPFVVFIAAPTITPGLNE  
 DESLQRLQKESDVLQRTYAHYFDLTIINNEIDETIRHLEEAVELVCTAPQWVPVSWVY

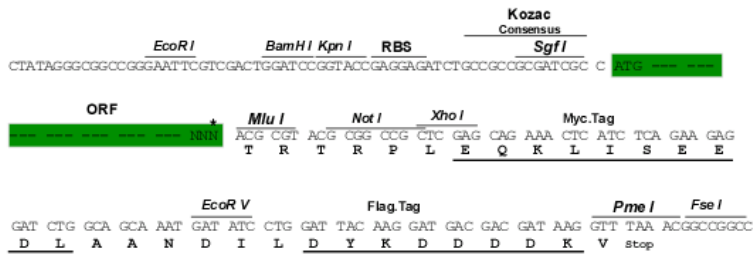
TRTRPLEQKLISEEDLAANDILDYKDDDDKV

Chromatograms: [https://cdn.origene.com/chromatograms/mm9009\\_d12.zip](https://cdn.origene.com/chromatograms/mm9009_d12.zip)

Restriction Sites: SgfI-MluI

Cloning Scheme:

Cloning sites used for ORF Shuttling:

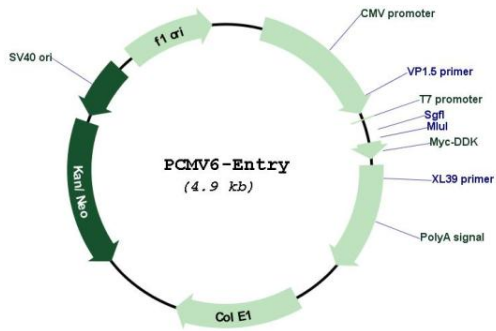


\* The last codon before the Stop codon of the ORF

ACCN: NM\_009806

<b>ORF Size:</b>	2694 bp
<b>OTI Disclaimer:</b>	The molecular sequence of this clone aligns with the gene accession number as a point of reference only. However, individual transcript sequences of the same gene can differ through naturally occurring variations (e.g. polymorphisms), each with its own valid existence. This clone is substantially in agreement with the reference, but a complete review of all prevailing variants is recommended prior to use. <a href="#">More info</a>
<b>OTI Annotation:</b>	This clone was engineered to express the complete ORF with an expression tag. Expression varies depending on the nature of the gene.
<b>Components:</b>	The ORF clone is ion-exchange column purified and shipped in a 2D barcoded Matrix tube containing 10ug of transfection-ready, dried plasmid DNA (reconstitute with 100 ul of water).
<b>Reconstitution Method:</b>	<ol style="list-style-type: none"><li>1. Centrifuge at 5,000xg for 5min.</li><li>2. Carefully open the tube and add 100ul of sterile water to dissolve the DNA.</li><li>3. Close the tube and incubate for 10 minutes at room temperature.</li><li>4. Briefly vortex the tube and then do a quick spin (less than 5000xg) to concentrate the liquid at the bottom.</li><li>5. Store the suspended plasmid at -20°C. The DNA is stable for at least one year from date of shipping when stored at -20°C.</li></ol>
<b>RefSeq:</b>	<a href="#">NM_009806.2</a> , <a href="#">NM_009806.3</a> , <a href="#">NP_033936.2</a>
<b>RefSeq Size:</b>	8260 bp
<b>RefSeq ORF:</b>	2694 bp
<b>Locus ID:</b>	12361
<b>UniProt ID:</b>	<a href="#">O70589</a>
<b>Cytogenetics:</b>	X 8.43 cM
<b>MW:</b>	102.5 kDa
<b>Gene Summary:</b>	Multidomain scaffolding protein with a role in synaptic transmembrane protein anchoring and ion channel trafficking. Contributes to neural development and regulation of gene expression via interaction with the transcription factor TBR1. Binds to cell-surface proteins, including amyloid precursor protein, neuexins, and syndecans. May mediate a link between the extracellular matrix and the actin cytoskeleton via its interaction with syndecan and with the actin/spectrin-binding protein 4.1.[UniProtKB/Swiss-Prot Function]

Product images:



Circular map for MR223129