

Product datasheet for **MR223100**

Cacnb2 (NM_023116) Mouse Tagged ORF Clone

Product data:

Product Type:	Expression Plasmids
Product Name:	Cacnb2 (NM_023116) Mouse Tagged ORF Clone
Tag:	Myc-DDK
Symbol:	Cacnb2
Synonyms:	AW060387; CAB2; Cavbeta2; Cchb2
Mammalian Cell Selection:	Neomycin
Vector:	pCMV6-Entry (PS100001)
E. coli Selection:	Kanamycin (25 ug/mL)



[View online »](#)

ORF Nucleotide Sequence:

>MR223100 representing NM_023116
 Red=Cloning site Blue=ORF Green=Tags(s)

TTTTGTAATACGACTCACTATAGGGCGGCCGGGAATTCGTCGACTGGATCCGGTACCGAGGAGATCTGCC
 GCC**CGGATCGCC**

ATGGTCCAAAGCGACACGTCCAAGTCGCCTCCCGTAGCGCGGTGGCGCAGGAGACCAGATGGAGCTGC
 TGGAGAGCGCGGCTCCCGCGGGGCGCTCGGAGCACAGTCTATGGAAAAGGAGCCAGGAGGAAAAATAG
 ATTTAAAGGCTCGGATGGAAGCACATCGTCAGACACTACCTCAAACAGTTTTGTCCGCCAGGGTTCGGCA
 GACTCCTACACCAGCGCCCATCCGATTAGATGTGTCTTTGGAAGAGGACCGGGAGGCAGTACGTAGAG
 AAGCTGAGCGGCAGGCACAGGCACAGTTGGAAAAAGCAAAGACAAAACCTGTTGCATTTGCAGTTCGGAC
 CAATGTCAGATACAGCGCAGCCAGGAGGATGACGTTCCGGTGCCTGGCATGGCCATCTCCTTCGAGGCC
 AAAGATTTCTGCATGTTAAAGAAAAATTAATAATGACTGGTGGATAGGACGGCTGGTTAAAGAAGGCT
 GTGAAATCGGATTTATTCGAAGCCAGTCAAACAGAGAATGAGGCTACAGCACGAACAGAGAGCCAA
 GCAAGGGAAATCTATTCAGTAATCAGGAGGAATTCATCATCCAGTTTGGGTGACATAGTGCCCACT
 TCCAGAAAATCGACACCGCGCTCATCTGCTATAGACATAGATGCTACTGGCTTAGATGCAGAAGAGAATG
 ATATTCAGCAAACCACCGCTCCCTAAGCCAGTGCAAACAGTGAACATCACCCCACTCCAAAGAGAA
 AAGAATGCCCTTCTTTAAGAAGACAGAGCACACTCCTCCTTATGATGTGGTACCTTCCATGCGACCAGTG
 GTGCTGGTGGGCCGCTCTGAAGGGGTATGAGGTCACAGATATGATGCAAAAAGCACTGTTTGATTTTC
 TAAAACACAGATTTGAAGGGCGGATATCCATCACAAGAGTCACTGCTGACATCTCCTTGCCAAACGCTC
 AGTATTAACAATCCCAGTAAGCATGCAATCATAGAAAGATCCAACACAAGGTCCAGCTTAGCGGAAGTT
 CAGAGTGAAATGAAAGGATTTTGAACCTGCAAGAACACTGCAATTGGTAGTCCCTTGACGCGGATACAA
 TTAATCACCCAGCTCAACTCAGTAAGACCTCTTTGGCCCTATCATAGTGTACGTAAAGATTTCTCTCC
 CAAGGTTTTACAAGGTTGATAAAATCTCGAGGGAAATCTCAAGCAAAACACCTCAATGTCCAGATGGTA
 GCAGCTGATAAACTGGCCAATGTCTCCGCAGGAATCATTGATGTGATCTTGATGAGAACCAGCTGG
 AGGACGCTTGAGCATCTTGCCGACTATCTGGAGGCATACTGGAAGGCCACCCACCTCCAGCGGTAA
 CCTCCCAACCTCTGCTTAGCCGACTTTAGCCTCCTCAACTTTACCTGAGCCCCACCTCGCCTCT
 AATTCACAGGTTCTCAAGGTGATCAAAGGCTGATCGCTCTGCTCCCGGTCTGCTTCCAAGCTGAAG
 AAGAACCTTGCTAGAACCCGTCAAAAAATCCCAACACCGTTCCTCCTCAGCCACACACAAAACACCG
 CAGCGGGACAGTTCGAGGCTCTTAGGCAAGAGACGTTTACTCTGAAACCAAGAGAGCCGAGACTCT
 GCCTACGTGGAGCAAAGGAAGATTATTCACATGAACATGTGGACCGGTATGTCCACACCGCGAGCATA
 ACCACAGAGAGGAGACCCACAGCAGCAATGGCCACAGACACAGGGAGTCTCGCCACCGCTTAGGGACAT
 GGGTCGAGACCAGGACCAATGAGTGCATCAAACAACGAAGCCGGCATAAATCTAAGGATCGCTACTGT
 GACAAGGAGGGGAAGTAATATCCAAGAGAAGGAATGAGGCTGGCGAGTGGAACAGGGATGTATACATCC
 GCCAA

ACGCGTACGCGGCCGCTCGAGCAGAACTCATCTCAGAAGAGGATCTGGCAGCAATGATATCCTGGATT
 ACAAGGATGACGACGATAAGGTTTAA

Protein Sequence: >MR223100 representing NM_023116
 Red=Cloning site Green=Tags(s)

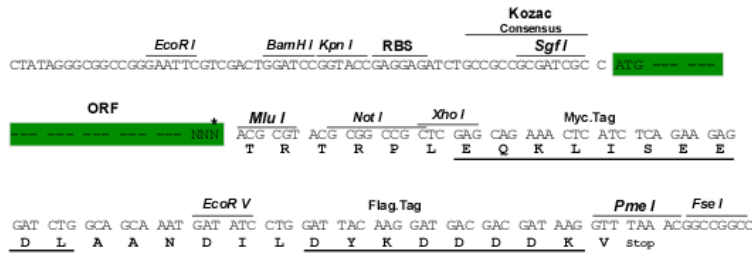
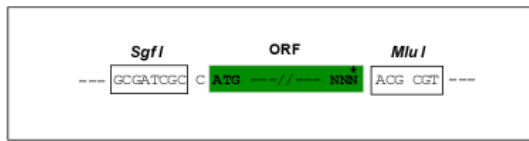
MVQSDTSKSPVAAVAQESQMELLESAAPAGALGAQSYGKGARRKNRFGSDGSTSSDTTNSNFVRQGSA
 DSYTSRPSDSDVLEEDREAVRREAERQAQAQLEKAKTKPVAFVVRTNVRYSAAQEDDVPVPGMAISFEA
 KDFLHVKEKFNNDWWIGRLVKEGCEIGFIPSPVKLENMRLQHEQRAKQGKFYSSKSGGNSSSLGDIVPS
 SRKSTPPSSAIDIDATGLDAEENDIPANHRSPKPSANSVTSPHSKEKRMPPFFKKTEHTPPYDVVPSMRPV
 VLVGPSLKGYEVTMMQKALDFLKHFRFGRISITRVTADISLAKRSVLNPNPSKHAIERSNTRSSLAEV
 QSEIERIFELARTLQLVVLADDTINHPAQLSKTSLAPIIYVVKISSPKVLQRLIKSRGKSQAKHLNVQMV
 AADKLAQCPPQESFDVILDENQLEDACEHLADYLEAYWKATHPPSGNLPNLLSRTLASSTLPLSPTLAS
 NSQGSQGDQRPDRSAPRSASQAEEEPCLPEVKKSQHRSSATHQNHRSGTGRGLSRQETFDFSETQESRDS
 AYVEPKEDYSHEVDRYVPHREHNHREETHSSNGHRHRESRHRSRDMGRDQDHNECIKQRSRHKSKDRYC
 DKEGEVISKRRNEAGEWNRDVYIRQ

TRTRPLEQKLISEEDLAANDILDYKDDDDKV

Restriction Sites:
Cloning Scheme:

SgfI-MluI

Cloning sites used for ORF Shuttling:

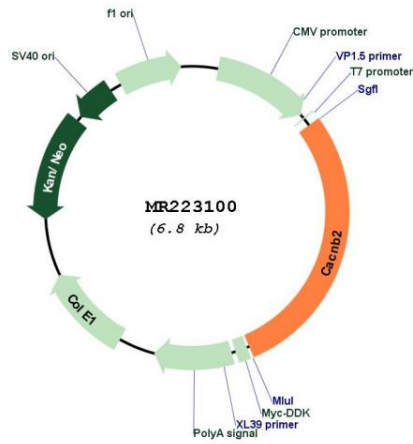


* The last codon before the Stop codon of the ORF

ACCN: NM_023116
ORF Size: 1965 bp

OTI Disclaimer:	<p>Due to the inherent nature of this plasmid, standard methods to replicate additional amounts of DNA in E. coli are highly likely to result in mutations and/or rearrangements. Therefore, OriGene does not guarantee the capability to replicate this plasmid DNA. Additional amounts of DNA can be purchased from OriGene with batch-specific, full-sequence verification at a reduced cost. Please contact our customer care team at custsupport@origene.com or by calling 301.340.3188 option 3 for pricing and delivery.</p> <p>The molecular sequence of this clone aligns with the gene accession number as a point of reference only. However, individual transcript sequences of the same gene can differ through naturally occurring variations (e.g. polymorphisms), each with its own valid existence. This clone is substantially in agreement with the reference, but a complete review of all prevailing variants is recommended prior to use. More info</p>
OTI Annotation:	This clone was engineered to express the complete ORF with an expression tag. Expression varies depending on the nature of the gene.
Components:	The ORF clone is ion-exchange column purified and shipped in a 2D barcoded Matrix tube containing 10ug of transfection-ready, dried plasmid DNA (reconstitute with 100 ul of water).
Reconstitution Method:	<ol style="list-style-type: none"> 1. Centrifuge at 5,000xg for 5min. 2. Carefully open the tube and add 100ul of sterile water to dissolve the DNA. 3. Close the tube and incubate for 10 minutes at room temperature. 4. Briefly vortex the tube and then do a quick spin (less than 5000xg) to concentrate the liquid at the bottom. 5. Store the suspended plasmid at -20°C. The DNA is stable for at least one year from date of shipping when stored at -20°C.
RefSeq:	NM_023116.4 , NP_075605.1
RefSeq Size:	3945 bp
RefSeq ORF:	1968 bp
Locus ID:	12296
UniProt ID:	Q8CC27
Cytogenetics:	2 10.7 cM
MW:	73.6 kDa
Gene Summary:	The beta subunit of voltage-dependent calcium channels contributes to the function of the calcium channel by increasing peak calcium current, shifting the voltage dependencies of activation and inactivation, modulating G protein inhibition and controlling the alpha-1 subunit membrane targeting.[UniProtKB/Swiss-Prot Function]

Product images:



Circular map for MR223100