

Product datasheet for **MR223078**

Slc6a8 (NM_001142809) Mouse Tagged ORF Clone

Product data:

Product Type:	Expression Plasmids
Product Name:	Slc6a8 (NM_001142809) Mouse Tagged ORF Clone
Tag:	Myc-DDK
Symbol:	Slc6a8
Synonyms:	AA589632; Creat; CRT; CRTR; CT1; CTR5
Mammalian Cell Selection:	Neomycin
Vector:	pCMV6-Entry (PS100001)
E. coli Selection:	Kanamycin (25 ug/mL)



[View online »](#)

ORF Nucleotide
Sequence:

>MR223078 representing NM_001142809
 Red=Cloning site Blue=ORF Green=Tags(s)

TTTTGTAATACGACTCACTATAGGGCGGCCGGAATTCGTCGACTGGATCCGGTACCGAGGAGATCTGCC
 GCCGCGATCGCC

ATGGCGAAAAAGAGCGCTGAAAACGGTATCTATAGCGTGTCTGGTGACGAGAAGAAGGGTCTCTCATCG
 TGTCGGGCCCGACGGTGCCCCAGCCAAGGGCGATGGCCCTGCGGGCCTGGGGCCGCTGGCGGCCGCT
 TGCAGTGCCACCGCAGAGACTTGGACACGCCAGATGGACTTCATCATGTCGTGCGTGGGCTTCGCCGTG
 GGCCTCGTAACGTGTGGCGCTTCCCCTACCTGTGCTACAAGAACGGCGGAGGTGTTCCTTATCCCT
 ATGTCCTGATTGCCCTGGTTGGAGGAATCCCCATTTTCTCTCGAAATCTCATTGGGCCAGTTCATGAA
 GGCCGGCAGCATCAATGTCTGGAACATCTGTCCCCTATTCAAAGGTCTGGGCTATGCCTCCATGGTGATT
 GTCTTCTACTGCAACACTTACTACATCATGGTGTGCGCTGGGGCTTCTATTACCTGGTCAAGTCCTTTA
 CTACCACCTTGGCATGGGCTACATGTGGCCACACCTGGAACACTCCTGACTGTGTGGAGATCTTCGCCA
 TGAAGACTGTGCCAATGCCAGCCTGGCCAACTCACATGTGACCAGCTTGTGACCGCCGGTCCCCTGTC
 ATCGAGTTCTGGGAGAACAAAGTATTGAGGCTCTCCACGGGGCTGGAGGTTCCAGGAGCCCTCAACTGGG
 AGGTGACCTTGTGCCTGTGGCCTGCTGGGTGCTGGTCTACTTCTGTGTGTGGAAGGGGGTCAAGTCAAC
 AGGAAAGATCGTGTACTTCACTGCTACATTCGCCCTACGTGGTCCCTCGTTGTGCTGCTGGTGGAGGGGTG
 CTGCTGCCTGGAGCCCTGGATGGTATCATCTACTATCTCAAGCCTGACTGGTCAAAGCTAGGGTCCCCTC
 AGGTATGGATAGATGCTGGGACCCAGATTTTCTTCTTATGCCATAGGCCTGGGGGCCCTCACAGCCCT
 AGGCAGCTACAATCGCTTCAACAACAACCTGCTACAAGGATGCCATCATCTGGCACTCATCAACAGCGGG
 ACCAGCTTCTTTGCTGGCTTTGTGGTCTTCTCCATCCTGGGCTTCATGGCCACAGAGCAGGGTGTGCATA
 TCTCAAGGTGGCAGAATCAGGGCCTGGTCTAGCCTTCATTGCCCTACCCACGGGCTGTCACTGATGCC
 TGTGGCCCCACTCTGGGCTGCCTTGTCTTCTTATGCTGCTGCTGCTCGGTCTGGACAGCCAGTTTGTA
 GGTGTGGAGGGCTTCAATACCGGCTCCTGGATCTCCTCCCGCCCTCCTACTACTTCCGTTTCAAAGGG
 AGATCTCCGTTGCTCTGCTGCGCCCTGCTTTGTCATCGATCTCCATGGTACTGATGGTGGAAAT
 GTACGTCTCCAGCTATTTGACTACTACTCAGCTAGTGGCACTACCCTGCTTTGGCAAGCCTTTTGGGAG
 TGTGTAGTTGTGGCTTGGGTTTATGGAGCTGACCGCTTCATGGATGACATTGCCTGTATGATTGGGTACC
 GACCTTGGCCCTGGATGAAATGGTGTGGTCTTCTTACCCCATGGTCTGCATGGGCATCTTCATCTT
 CAACATTGTGTACTACGAGCCACTGGTCTACAACAACACCTACGTGTACCCATGGTGGGGTGAAGCTATG
 GGCTGGGCCCTTGGCACTCTTCTATGCTATGTGTACCCCTCCACCTCCTGGGCTGTCTCCTCAGGGCAA
 AAGGAACCATGGCAGAGCGATGGCAGCACCTGACCCAGCCTATCTGGGGCCTCCATCACTTGAATACAG
 AGCTCAGGATGCAGATGTGAGGGCCTGACCACCTGACTCCCCTGTCCGAGAGCAGCAAGTCTGTCGTG
 GTGGAGAGTGTATG

ACGCGTACGCGGCCGCTCGAGCAGAACTCATCTCAGAAGAGGATCTGGCAGCAAATGATATCCTGGATT
 ACAAGGATGACGACGATAAGGTTTAA

Protein Sequence: >MR223078 representing NM_001142809
 Red=Cloning site Green=Tags(s)

MAKXSAENGIYSVSGDEKKGPLIVSGPDGAPAKGDGPAGLGAPGGRLAVPPRETWTRQMDFIMSCVGFVAV
 GLGNVWRFPYLCYKNGGGVFLIPYVLIALVGGIPIFFLEISLGGQFMKAGSINVWNICPLFKGLGYASMI
 VFYCNYYIMVLAWGFYLVKSF TTTLPWATCGHTWNTPCVEIFRHEDCANASLANL TCDQLADRRSPV
 IEFWENKVLRLSTGLEVPALNWEVTLCLLACWLVLYFCVWKGVKSTGKIYYFTATFPYVVLVLLVIRGV
 LLPGALDGIYYLKPDSKLGSPQWIDAGTQIFFSYAIGL GALTALGSYNRFNNCYKDAIILALINSG
 TSFFAGFVVSILGFMATEQGVHISKVAESGGLAFIAYPRAVTLMPVAPLWAALFFFMLLLLGLDSQFV
 GVEGFITGLDLLPASYFRFRQREISVALCCALCFVIDLSMVTGGMYVFQFDYYSASGTTLLWQAFWE
 CVVVAWVYGADRFMDIACMIGYRCPWMKWCWSFFTPLVCMGIFIFNIVYYEPLVYNNTYVYPWWEAM
 GWAFALSSMLCVPLHLLGCLLRAKGTMAERWQHLTQPIWGLHHLEHYRAQDADVRGLTTLTPVSESSKVVV
 VESVM

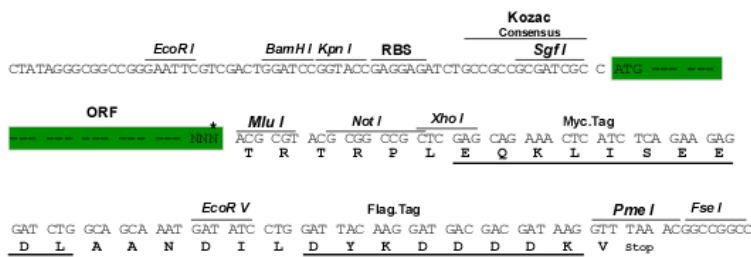
TRTRPLEQKLISEEDLAANDILDYKDDDDKV

Chromatograms: https://cdn.origene.com/chromatograms/mm9014_c10.zip

Restriction Sites: Sgfl-MluI

Cloning Scheme:

Cloning sites used for ORF Shuttling:



* The last codon before the Stop codon of the ORF

ACCN: NM_001142809

ORF Size: 1905 bp

OTI Disclaimer: The molecular sequence of this clone aligns with the gene accession number as a point of reference only. However, individual transcript sequences of the same gene can differ through naturally occurring variations (e.g. polymorphisms), each with its own valid existence. This clone is substantially in agreement with the reference, but a complete review of all prevailing variants is recommended prior to use. [More info](#)

OTI Annotation: This clone was engineered to express the complete ORF with an expression tag. Expression varies depending on the nature of the gene.

Components: The ORF clone is ion-exchange column purified and shipped in a 2D barcoded Matrix tube containing 10ug of transfection-ready, dried plasmid DNA (reconstitute with 100 ul of water).

Reconstitution Method:

1. Centrifuge at 5,000xg for 5min.
2. Carefully open the tube and add 100ul of sterile water to dissolve the DNA.
3. Close the tube and incubate for 10 minutes at room temperature.
4. Briefly vortex the tube and then do a quick spin (less than 5000xg) to concentrate the liquid at the bottom.
5. Store the suspended plasmid at -20°C. The DNA is stable for at least one year from date of shipping when stored at -20°C.

RefSeq: [NM_001142809.1](#), [NP_001136281.1](#)

RefSeq Size: 3977 bp

RefSeq ORF: 1908 bp

Locus ID: 102857

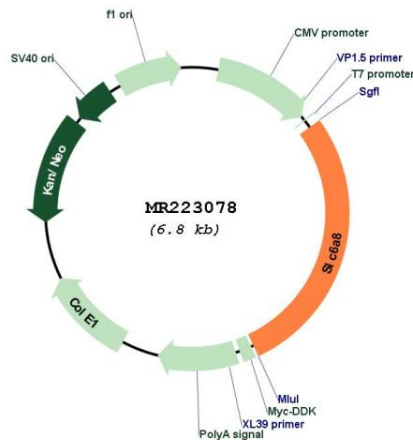
UniProt ID: [Q8VBW1](#)

Cytogenetics: X 37.38 cM

MW: 71 kDa

Gene Summary: Required for the uptake of creatine. Plays an important role in supplying creatine to the brain via the blood-brain barrier.[UniProtKB/Swiss-Prot Function]

Product images:



Circular map for MR223078