

## Product datasheet for **MR223020**

### **C330027C09Rik (NM\_172616) Mouse Tagged ORF Clone**

#### **Product data:**

Product Type:	Expression Plasmids
Product Name:	C330027C09Rik (NM_172616) Mouse Tagged ORF Clone
Tag:	Myc-DDK
Symbol:	C330027C09Rik
Synonyms:	AA408511; AU018569; Cip2a; Kiaa1524
Mammalian Cell Selection:	Neomycin
Vector:	pCMV6-Entry (PS100001)
E. coli Selection:	Kanamycin (25 ug/mL)



[View online »](#)

**ORF Nucleotide Sequence:**

>MR223020 representing NM\_172616  
 Red=Cloning site Blue=ORF Green=Tags(s)

TTTTGTAATACGACTCACTATAGGGCGGCCGGAATTCGTCGACTGGATCCGGTACCGAGGAGATCTGCC  
 GCC**CGCATCGCC**

ATGGATTCCACCGCTGCTTGAAGTCCCTGCTCCTGAGCATCAGTCAGTACAAGCCGTTAAGTCGGAGG  
 CGAACGCCACTCAGCTGCTGAGGCACTTGAGGTAGTTTCTGGACAAAAGCTCACACGACTGTTTACATC  
 ACATCAGATATTACCAAGTGAATGCTTGAGCTGCCTTGTAGAACTTCTCGAAGACCCAAACATAAGTGCT  
 TCACTGATCTTAAGTATTATCAGTTTGCTGCTCAACTGGCTATAGATAATGAAACCCGAGACTGTCTTC  
 AGAATATATACAATCTGAATAGTGTGCTGTGAGGAGTGGTTTGTGCGAGCAGCGCTTGCCACAATGATTC  
 CGTGTTTTACAGTGCATTCAACTGCTGCAAAGGTTAACATATAATGCCAAATTTTCCATTCTGGTGCC  
 CATATAGATGACTTAATTACATTCTTGATTGGTCATGTTCACTTCTGAAGATGAGCTAACATGCCTT  
 GTCTAGGACTATTGGCAAATCTTGTGCGCACAACTTTTCTGTTCAAACACAAATAAAACTTTGAGTAA  
 TGTGAAATCTTTTACCGAACTCTCATAAGCTTCTAGCACACAGCAGTCTGACTGTGGTTGTGTTTGA  
 CTTTCAATATTATCCAGTTTAACTAAATGAAGAAGTGGGAGAAAAGCTATTTTCATGCTCGAAACATTC  
 ATCAGACTTTCCAATTAATTTAATATTCTCATAAATGGTATGGTACCTAACAGAAAGTACTCAGT  
 TGACCTACTGATGGATCTCCTAAAAACCTAAAATTGCTGATTATCTGACCAGGTATGAGCACTTTTCT  
 TCATGTCTTAGTCAAGTACTAGGACTTCTAAATGCAAAAGACCCTGATTCTTCTTCCAAGTTTTAGAAT  
 TACTTCTTGCTTCTGTGAGTACTCAGCTGCGCCATGACTCAGTCAGATGATGTTTGAACAGTCTCC  
 ATCTGGCAACATTCTGGGAGCCGTCCTAAGAGCTTAGAGCCTACTGCGGCTCTACTTCGCTGGTTAAGC  
 CAACCTTGGATGGAGCTGAAAACCTGTTCTGTGTTAGCATTGGAGTTGTTCAAGGAAATCTTCGAGGATG  
 TCATTGATACTGGTAACTGTTCCCTCAACTGACCTTTTGTGACCTTCTGCTTCTCAACTTCTTGATCA  
 GCTTCAGTTCAAAGAACAAAATCTGGATGAGACCTTAGTAAGAAATAAGTGTGAAAGGATGGTCAAAGCC  
 ATTGAAGTTTTATTAACCTGTGTGGAGACGACTCTGAAAATGCATGTTGAAAAATATTGACTACTC  
 TAAAGTGCACCACGCTTATAGAGCAGCAGTTTACATATGGCAAGATTGACCTGGGGTTTTGGAACAAAGGT  
 AGCCGATTCTGAGTTGTGCAAACTTGCTGCTGATGTAATTTTGAACCTTACTTTGATGAACAAACTT  
 AAACAGTTGGTCCCTGGTATGGAAGTAAGCTTCTACAAAATCCTTCAGGATCCGCGGTTGATTACTCCTT  
 TAGCTTTTGTCTTAACTGATGATAATAGAGAGCAAGTCCAGTCTGGATTGGGAATACTGCTTGAAGCCTC  
 TCCCTGCCGATTTCCCTGCCTTCTGACTTGGAGAAAGTATAGCAGCAAAACATGTATACAGACAGCAA  
 GAAACTGAGCATCTGCCAGGAAAATGACTTTCCAGCCCTTAAATCATGGTTTTTCAACATCAGCAAAGT  
 GCTTAACGCCCTCCTCCTTCAAAGATAATGCTCCTGCGTTGAACATTGAGGACCTCATAGAGAACTGCA  
 GGCTGGAGTATGGTAAAGGATCAGATTAGTGATATAAGAATATCTGACATCATGGATGTTTATGAGATG  
 AAATTTCCACATTAGCCTCTAAAGAGAGCAGGTTACAAGATCTCCTGGAAGCAAAGGCCCTGGCTCTTG  
 CACAGGCTGACAGACTGATCGCTCAGTATCGCTGTGAGAGAACGCAAGCAGAGACAGAGGACGCAACT  
 TGCGGGTATGTTACGAGAAGTTGAGAGAAAAATGAAGAGCTTAGTGTGTTGCTGAAGTCACAACAGCTC  
 GAGTCAGAAAGAGCCCAAAATGATATTGAGCATCTTTCAACACAGTAAGAAGCTGGAATCTGTAGCTG  
 CAGAACATGAAATACTGACAAAGTCTACATGGAACCTGTTCAAAGAAATGAAGCTACTGAAAAGAAGAA  
 TACTGACTTACAGACTACCTGTGAATCTCTGAATAAACACATTGAGACAATGAAAAAATGAACGAGGCG  
 CTCAGCAACAAAATGAAAAAATATTGCTCAGTTGATAGAGAAAGAGCAGAGAAAAGAAAGTCCAGA  
 GCCAGTTAGCAGACCGAGAAATGAACTATCAAATTTGCATAAAAATAGCAAAAATCCCAAGAGAAAAACT  
 TAATGTTTTACAAAAGGAAAAGGAAAGATAAGCAGGAAACCATGATATCCTTAGAAAAGAATTAAGCAGA  
 ACAGAACAGATAAGGAAAGAGTTGAGCATTAAAGGCTTCTCCCTAGAAAATGCACAAGGCTCAATTAGAAG  
 GTCGTTTGAAGAGAAGGAGTCTTTGTTGAACTTCAAGAGGAGTTGAACAAACATTCTCACATGAT  
 AGCAATGATCCACAGTTAAGTGGTGGAAAAATAAGCCCAAGAACTGTGAACCTTAGTATA

**ACGCGT**ACGCGGCCGCTCGAGCAGAACTCATCTCAGAAGAGGATCTGGCAGCAAATGATATCTGGATT  
 ACAAGGATGACGACGATAAGGTTTAA

Protein Sequence: >MR223020 representing NM\_172616  
 Red=Cloning site Green=Tags(s)

MDSTACLKSLLLSISQYKAVKSEANATQLLRHLEVVSQQLTRLFTSHQILPSECLSCLVELLEDPNISA  
 SLILSIIISLLSQLAIDNETRDCLQNIYNLNSVL SGVVCRSSACHNDSVFLQCIQLLQRLTYNAKFFHSGA  
 HIDDLITFLIGHVQSSSEDELTPCLGLLANLCRHNLSVQTQIKITLSNVKSFYRTLISFLAHSSTLVVVF  
 LSILSSLTLNEEVGKELFHARNIHQTFQLIFNILINGDGLTRKYSDLLMDLLKNPKIADYLTRYEHFS  
 SCLSQVLGLLNAKDPDSSSKVLELLLAFCAVTQLRHVLSQMMFEQSPSGNILGSRPKSLEPTAALLRWLS  
 QPLDGAENCSVLALELFEKIFEDVIDTGNCSSTDFVTLTLLPTILDQLQFKEQNLDETLVRNKCEFMVKA  
 IEVLLTLCGDDSLKMHVVKILTTLKCTTLEQQFTYKIDLGFGTKVADSELCKLAADVILKTLTLMNKL  
 KQLVPGMEVSFYKILQDPRITPLAFAL TSDNREQVQSGLGILLEASPLPDFPAFVLGESIAANNVYRQQ  
 ETEHLPRKMTFQPLNHGFSTSAKCLTPPPSKDNAPALNIEDLIEKLQAGVMVKDQISDIRISDIMDVYEM  
 KLSTLASKESRLQDLLEAKALAAQADRLIAQYRCQRTQAETEARTLAGMLREVERKNEELSVLLKSOQL  
 ESERAQNDIEHLFQHSKKLESVAAEHEILTKSYMELVQRNEATEKKNTDLQTTCESLNKHIEITMKKLNEA  
 LKQQNEKTIAQLIEKEEQRKEVQSQLADRECKLSNLHKIAKSQEEKLNLVQKEKEDKQETIDILRKELSR  
 TEQIRKELSIKASSLEMHKAQLEGRLEEKESLLKLQEEELNKHSHMIAMIHSLSGGKISPETVNLSTI

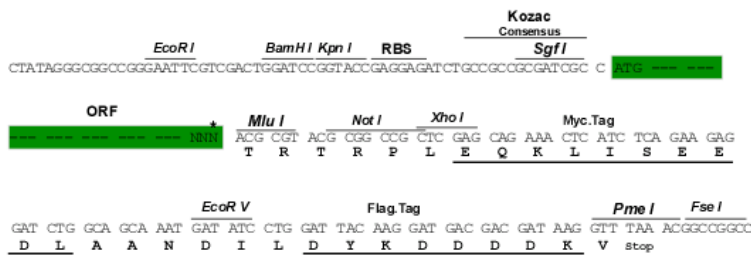
TRTRPLEQKLISEEDLAANDILDYKDDDDKV

Chromatograms: [https://cdn.origene.com/chromatograms/mm9034\\_a10.zip](https://cdn.origene.com/chromatograms/mm9034_a10.zip)

Restriction Sites: SgfI-MluI

Cloning Scheme:

Cloning sites used for ORF Shuttling:

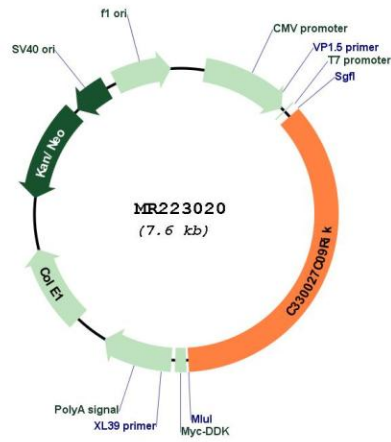


\* The last codon before the Stop codon of the ORF

ACCN: NM\_172616

<b>ORF Size:</b>	2721 bp
<b>OTI Disclaimer:</b>	The molecular sequence of this clone aligns with the gene accession number as a point of reference only. However, individual transcript sequences of the same gene can differ through naturally occurring variations (e.g. polymorphisms), each with its own valid existence. This clone is substantially in agreement with the reference, but a complete review of all prevailing variants is recommended prior to use. <a href="#">More info</a>
<b>OTI Annotation:</b>	This clone was engineered to express the complete ORF with an expression tag. Expression varies depending on the nature of the gene.
<b>Components:</b>	The ORF clone is ion-exchange column purified and shipped in a 2D barcoded Matrix tube containing 10ug of transfection-ready, dried plasmid DNA (reconstitute with 100 ul of water).
<b>Reconstitution Method:</b>	<ol style="list-style-type: none"><li>1. Centrifuge at 5,000xg for 5min.</li><li>2. Carefully open the tube and add 100ul of sterile water to dissolve the DNA.</li><li>3. Close the tube and incubate for 10 minutes at room temperature.</li><li>4. Briefly vortex the tube and then do a quick spin (less than 5000xg) to concentrate the liquid at the bottom.</li><li>5. Store the suspended plasmid at -20°C. The DNA is stable for at least one year from date of shipping when stored at -20°C.</li></ol>
<b>RefSeq:</b>	<a href="#">NM_172616.2</a> , <a href="#">NP_766204.2</a>
<b>RefSeq Size:</b>	3974 bp
<b>RefSeq ORF:</b>	2724 bp
<b>Locus ID:</b>	224171
<b>UniProt ID:</b>	<a href="#">Q8BWY9</a>
<b>Cytogenetics:</b>	16 B5
<b>MW:</b>	102.5 kDa
<b>Gene Summary:</b>	Promotes anchorage-independent cell growth and tumor formation.[UniProtKB/Swiss-Prot Function]

Product images:



Circular map for MR223020