

## Product datasheet for MR222996

### Arpp21 (NM\_001177619) Mouse Tagged ORF Clone

#### Product data:

Product Type:	Expression Plasmids
Product Name:	Arpp21 (NM_001177619) Mouse Tagged ORF Clone
Tag:	Myc-DDK
Symbol:	Arpp21
Synonyms:	0710001E13Rik; AI853636; ARPP-21; D9Bwg1012e; R3hdm3; Tarpp
Mammalian Cell Selection:	Neomycin
Vector:	pCMV6-Entry (PS100001)
E. coli Selection:	Kanamycin (25 ug/mL)
ORF Nucleotide Sequence:	>MR222996 representing NM_001177619 Red=Cloning site Blue=ORF Green=Tags(s)

TTTTGTAATACGACTCACTATAGGGCGGCCGGAATTCGTCGACTGGATCCGGTACCGAGGAGATCTGCC  
GCC**CGATCGCC**

ATGCTGAGCAAGGAGGACTGACTCCGACCATACTGGAAGAAGGGCAGACGGAGCCAGAGTCTGCCCCAG  
AAAATGGCATCCTCAAGTCAGAAAGTCTGGATGAGGAGGAGAAGCTGGAAGTGCAGCGGCGACTGGCGGC  
TCAGAACCAAGAGAGGAGAAAAATCCAAGTCAGGAGCAGGCAAAGGAAGCTGACCAGAAGTCTTGCTGTC  
TGTGAAGAGTCTCAGCTAGATCTGGAGGGGAAAGTCACCAGGATCAGGAATCAATTCACCTACAGCTTT  
CCAGTTTCCCCAGCCTGCAAGAGGAGGATAAATCTAGGAAGGATGATTCTGAGAGAGAAAAAGAAAAGGA  
TAAGAACAGAGAGAACTCTCTGAGAGACCCAAGATCAGAATGTTATCAAAGATTGCAGCCAAGAATAC  
ACAGATTTACAGGCATAGACTTACATGGGTTTCTAATTAACACGCTGAAGAACAATTCAGGGACAGGA  
TGATACTCTTGAAAAATGGAGCAGGAAATGATTGATTTTCATTGCTGACAGCAATAACCACTATAAAAAAGTT  
CCCCCAGATGTCATCCTATCAAAGGATGCTGGTCCATCGGGTGGCAGCGTACTTTGGATTGGACCACAAC  
GTGGATCAAACGGAAAAATCTGTCATCATCAACAAGACCAGCAGCACCAGGATACCAGAGCAAAGGTTTT  
GTGAACATTTAAAAGATGAAAAAAGTGAAGAATCCAGAAGCGGTTTATCTTGAAGCGAGATAACTCTAG  
GAAGAGAGAGAAGGAATATCAGAGAGTGAGGGAGAGAATATTGCACATGATGTGATAGTTGTTTTTA  
ATTGCCTTTGAGTATGGTCCTTCCATCAGCAGAAAGGCCCTCGTTGCTCGGACAGAGATCTGGCAGGG  
AGTACAGAGGCTGGGAGCAAGGAACGAGTTACAAAGCAGGAAACACAAATGTTTCTGGGAGAGAACCTGG  
TTCAGGGATGCGTTGAAACAGTCCAAGAGTCTGTGTATGTGCCCCAGGGCATCACCTACCAGGG

**ACGCGT**ACGCGGCCGCTCGAGCAGAAACTCATCTCAGAAGAGGATCTGGCAGCAAATGATATCCTGGATT  
ACAAGGATGACGACGATAAGGTTTAA



[View online »](#)

**Protein Sequence:** >MR222996 representing NM\_001177619  
 Red=Cloning site Green=Tags(s)

MSEQGGLTPTILEEGQTEPESAPENGILKSESLDEEEKLELQRRLAAQNQERRKSKSGAGKGLTRSLAV  
 CEESSARSGGESHQDQESIHLQLSSFPSLQEEDKSRKDDSEREKEKDKNREKLSERP KIRMLSKDCSQEY  
 TDSTGIDLHGFLINTLKNNSRDRMILLKMEQEMIDFIADSNNHYYKFPQMSSYQRM LVHRVAAYFGLDHN  
 VDQTGKSVIINKTSSTRIPEQRFCEHLKDEKSEESQKRFILKRDNSSIDKEDNQQRNRMHPFRDRRRSKSI  
 EEEEEYQVRERIFAHDVSSCFNCLLSMVLPSAERPLVARTEIWQGVQRLGARNELQSRKHKCFWERTW  
 FRDALKQSKSLCMCPPGHLLPG

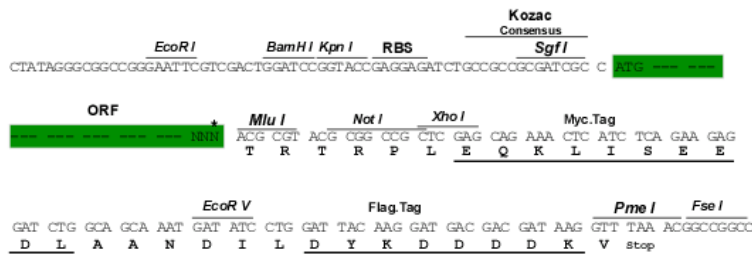
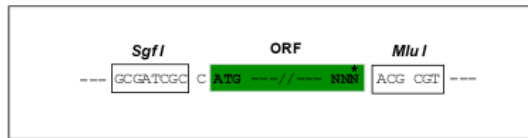
TRTRPLEQKLISEEDLAANDILDYKDDDDKV

**Restriction Sites:**

Sgfl-MluI

**Cloning Scheme:**

Cloning sites used for ORF Shuttling:



\* The last codon before the Stop codon of the ORF

**ACCN:** NM\_001177619

**ORF Size:** 1116 bp

**OTI Disclaimer:** The molecular sequence of this clone aligns with the gene accession number as a point of reference only. However, individual transcript sequences of the same gene can differ through naturally occurring variations (e.g. polymorphisms), each with its own valid existence. This clone is substantially in agreement with the reference, but a complete review of all prevailing variants is recommended prior to use. [More info](#)

**OTI Annotation:** This clone was engineered to express the complete ORF with an expression tag. Expression varies depending on the nature of the gene.

**Components:** The ORF clone is ion-exchange column purified and shipped in a 2D barcoded Matrix tube containing 10ug of transfection-ready, dried plasmid DNA (reconstitute with 100 ul of water).

**Reconstitution Method:**

1. Centrifuge at 5,000xg for 5min.
2. Carefully open the tube and add 100ul of sterile water to dissolve the DNA.
3. Close the tube and incubate for 10 minutes at room temperature.
4. Briefly vortex the tube and then do a quick spin (less than 5000xg) to concentrate the liquid at the bottom.
5. Store the suspended plasmid at -20°C. The DNA is stable for at least one year from date of shipping when stored at -20°C.

**RefSeq:** [NM\\_001177619.1](#), [NP\\_001171090.1](#)

**RefSeq Size:** 2593 bp

**RefSeq ORF:** 1119 bp

**Locus ID:** 74100

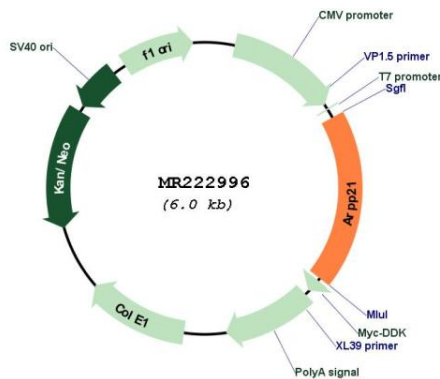
**UniProt ID:** [Q9DCB4](#)

**Cytogenetics:** 9 62.46 cM

**MW:** 43.7 kDa

**Gene Summary:** Isoform 2 may act as a competitive inhibitor of calmodulin-dependent enzymes such as calcineurin in neurons.[UniProtKB/Swiss-Prot Function]

**Product images:**



Circular map for MR222996