

Product datasheet for **MR222951**

E2f7 (NM_178609) Mouse Tagged ORF Clone

Product data:

Product Type:	Expression Plasmids
Product Name:	E2f7 (NM_178609) Mouse Tagged ORF Clone
Tag:	Myc-DDK
Symbol:	E2f7
Synonyms:	A630014C11Rik; D10Ertd739e; E2F-7
Mammalian Cell Selection:	Neomycin
Vector:	pCMV6-Entry (PS100001)
E. coli Selection:	Kanamycin (25 ug/mL)



[View online »](#)

ORF Nucleotide Sequence:

>MR222951 representing NM_178609
 Red=Cloning site Blue=ORF Green=Tags(s)

TTTTGTAATACGACTCACTATAGGGCGGCCGGAATTCGTCGACTGGATCCGGTACCGAGGAGATCTGCC
 GCC**CGGATCGCC**

ATGGAGGTGAATTGTTTAACTAAAAGACTTGATCAGCCCCAGGCAGACCAGACTAGATTTTGCCATTG
 AAGATGCAGAGAACGCACAAAAGGAAAATATTTTGTGACCCGATCAAGGATGACCCCAAAGACACCGAT
 GAAGAACGAGCCGATCGACCTGTCAAAGCAAAGAATCTTACCCCAAGACAGAAACCCATTACTCCAGTA
 AAGCCGGTCGACAGGCAGCCGAGGTGGAGCCCTGGACACCCACAGCAACCTGAAGATGCTCATCAGCG
 CCGCCAGCCAGACATAAGAGACCGGGAAGAAAAGGAGCTGTTAGACCCATTGAGAATAAGGAGGA
 TGCGTTCGTGAATCCCTGCAGCTTGACGTGGCCGGTACGCGGCTGTGGATGAGTATGAGAAGCAAAGG
 CCAAGCAGGAAACAGAAGAGCTTGGGGCTGCTGTGCCAGAAGTTCTAGCTCGCTATCCGAGCTACCCCT
 TGTCAACGGAGAAAACCCATCTCCCTAGATGAGGTGCGCGTCAGTCTCGGCGTGGAAAGGAGACGCAT
 CTATGACATCGTAAACGTGCTGGAGTCGCTGCATCTGGTCAGCCGGTGGCTAAGAATCAGTATGGTTGG
 CACGGTCCGACAGCCTCCCAAACCCCTGAGGACCCACAGAGACTGGGAGAGGAACAGAAATACGAGG
 AGCAGATGGCCTGCCTCCAGCAGAAGGAGCTGGACCTGATGGGGTATAGTTTCGGAGAACCGAGGAAAGA
 CGGGTCTCCGGACCCCGAGATCCACACCTACTTGATTTTCCGAAGCCGACTACCCCTCTTCATCTGCA
 AACAGTCGAAAAGATAAATCTTTAAGAATTATGAGCCAGAAGTTTGTGATGCTGTTCCCTCGTCTCCAAA
 CCAAGATTGTCACCCTGGATGTAGCTGCCAAAATCCTCATAGAAGAAAGCAAGATACCCCGACACAG
 CAAATTCAAAACAAGGTACGGAGGCTCTATGACATAGCCAATGTTCTGACCAGCCTGGCTCTGATAAAG
 AAAGTTCACGTAACAGAAGAGCGAGGCCGGAACACAGCCTCAAGTGGATCGGCCTGTGGACTTCAGCT
 CCATTGATGAAGAACTGTTGGAGTCTCTGCATCCATCTTACCAGAATTGAAGAAGGACATACGGCCA
 GATCCGAGTGTGTGCAAAGAGAGGCTGGTGGCGTACGGTTCCTTTAACACGGTTCACACGCTCGAGAAG
 ATACAGAGAAAAGTGAGCTCAGAACCACAGCCACAGGGAGAAAGACAAGGGTACGCCTATCCCTGG
 AAATTGGAAGTCTGGCGCCATCTACAGACAGAAAGTAGAAGATAATTCCGAGGAGGAAGCCTTTGTGAG
 TAACACAGCAGTGCCTCCAGCAAGCATCTTGGACCCCGCCCTCTCCATGGACTCTGAATACTGTGCAAG
 CCTTTAGCCAGCCAGTATTTTCTGTTGCTCAAACAGATTTGCCGGCCTTCTCTGCGCAGAATGGTCCAA
 GCGGACAAGTAGGTGTCCTTCTGTCAGCCTCCGACACAGAGAACTTAAAGCCAGCTCTGCTCGC
 CGGCCAGCCCTGGTCTACGTGCCCTCCACCAACTCTTCATGCTGTACGGGAGTGTGCAGGAGGGACTG
 TCCCCAGAGTCAAGGTGAGGAAAGATGGTGGTGGCTCCGATGTCCAGCTGACCTGTGAGTACACCCCT
 CTGCTCAGAAGCCCTGTGTGAGGAGAGAGATCCTCAGGAGGAGGAGGACGAGCCCGCCATGAAAAGACA
 AAGTCAGGAATTTGAAGACAGCCCTTATCCCTAGTTATGCCAAAGAAACCCCTCAAGTTCACAGACCTT
 GCCTGTCTGTGACCATGGGAAACGGGAGCTCTCCACCCCTGGAAGACGCCTGTGTTAAGGGTACGCTCC
 CTGCTGCAGAGAAGTTACAGGAAAGGCTGCCCAAACCTGCTATGTTGCTTCTGAGTGTGAAACCCGGC
 AAGAAATCCAGACACTGAAAAGCCTTCCAACGAAAACGAGATCACCAAAGACCCCTCGCTGATGCAGTAC
 CTGTATGTGACGCTCTCCCGCAGGGTTAAATGGTTTTAACATGGTTTTACCAGGCACCCAGACCCCCACA
 CCGTGGCACCCCTCCCGGCTCAGCTGCCATCCTTCGGCGTACCCTGCATGTTCTGCAATCCCGAGCCT
 GGGCCCTTTCCAGTTCTCTATTTCCCGCAATACCCGGGCCATTTCTTCAGCCCCCGGCACTCACCCA
 AACCCCGGACCCATGAACTTCGGCTTGTCCACCCCTGGCATCTGCTTCTCACCTTCTCATAGCCCGGACG
 CCATGGTCAATCAAAGCCATCCACCCTCCCTGTACAGACCCTCAGCTTCGCTGTGAGCCCTACTCAA
 CCTGAACCCCGTGTGACAGGCTCACACGGCGTATCCACCCGAGTCCCTGTTACGTGAGACATCCG
 GTATCGATGGTAAAGGCAGAGCAGTCCCTGCACCGGCGACTCCAAGAGCATCAAACGGAGACATCGGG
 AGACGTTCTTCAAGACTCCCGGACGCTCGGCGATCCGGTCTTTAGAAGAAAAGAAAGGAACCAATCAAG
 AAACACTAGCTCAGCCAGAGGAGACTAGAATCTCTAGCAGCGGCCTGAC

ACGGTACGGCGCCGCTCGAGCAGAACTCATCTCAGAAGAGGATCTGGCAGCAATGATATCTGGATT
ACAAGGATGACGACGATAAGGTTTAA

Protein Sequence: >MR222951 representing NM_178609
Red=Cloning site Green=Tags(s)

```
MEVNCLTLKDLISPRQTRLDFAIEDAENAQKENIFVDRSRMTPKTPMKNEPIDLSKQRIFTPDRNPITPV
KPVDRQPQVEPWPTANLKMLISAASPDIRDREKKELFRPIENKEDAFVNSLQLDVAGDGAVDEYEQR
PSRKQKSLGLLCQKFLARYPSYPLSTEKTTISLDEVAVSLGVERRRIYDIVNVLESLSLHLSRVAKNQYGW
HGRHSLPKLRLTLQRLGEEQKYEEQMAQLQQKELDLMGYRFGERRKDGSPDRDPHLLDFSEADYPSSA
NSRKDKSLRIMSQKFVMLFLVSKTKIVTLDVAAKILIEESQDTPDHSKFKTKVRRLYDIANVLTSLALIK
KVHVTEERGRKPAFKWIGPVDVSSIDEELLDVASILPELKKEAYGQIRVCAKERLVRYGSFNTVHTSEK
IQRKVSSEPPSPQGERQGSAYSLEIGSLAAIYRQKVEDNSQEEAFVSNTAVPPASILDPAISMDSEYCVK
PLAQPVFSVAQTDLPFSAQNGPSGQVGVVPSAASDTENLKPALLAGQPLVYVPSTQLFMLYGSVQEGL
SPESRSEEDGGSDVPADL SVTPSAQKRLCEERDPQEEDEPAMKRQSQEFEDSPLSLVMPKKPSSSTD
ACPVTMGNGSSPLEDACVKGQLPAAEEVTGKAAPNCYVASECGNPARNPDETEKPSNENEITKDPSLMQY
LYVQSPAGLNGFNMLPGTQTPHTVAPSPAQLPSFGVPCMFLLQSPGLGPFVLYSPAIPGPISSAPGTHP
NPGPMNFGSLTLASASHLLISPAAMVNPKPSTLPCTDPQLRCQPSLNLNPVMPGSHGVIHPESPCYVRHP
VSMVKAEQSPAPATPKSIQRRHRETFKTPGSLGDPVFRRKERNQSRNTSSAQRRLIESSSGPD
```

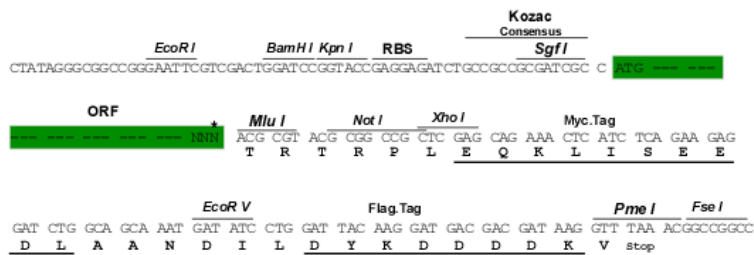
TRTRPLEQKLISEEDLAANDILDYKDDDDKV

Chromatograms: https://cdn.origene.com/chromatograms/mm9089_f08.zip

Restriction Sites: SgfI-MluI

Cloning Scheme:

Cloning sites used for ORF Shuttling:



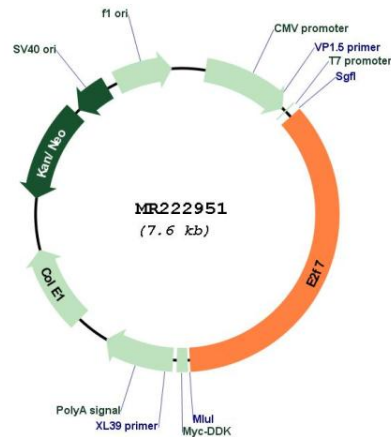
* The last codon before the Stop codon of the ORF

ACCN: NM_178609

ORF Size:	2712 bp
OTI Disclaimer:	The molecular sequence of this clone aligns with the gene accession number as a point of reference only. However, individual transcript sequences of the same gene can differ through naturally occurring variations (e.g. polymorphisms), each with its own valid existence. This clone is substantially in agreement with the reference, but a complete review of all prevailing variants is recommended prior to use. More info
OTI Annotation:	This clone was engineered to express the complete ORF with an expression tag. Expression varies depending on the nature of the gene.
Components:	The ORF clone is ion-exchange column purified and shipped in a 2D barcoded Matrix tube containing 10ug of transfection-ready, dried plasmid DNA (reconstitute with 100 ul of water).
Reconstitution Method:	<ol style="list-style-type: none">1. Centrifuge at 5,000xg for 5min.2. Carefully open the tube and add 100ul of sterile water to dissolve the DNA.3. Close the tube and incubate for 10 minutes at room temperature.4. Briefly vortex the tube and then do a quick spin (less than 5000xg) to concentrate the liquid at the bottom.5. Store the suspended plasmid at -20°C. The DNA is stable for at least one year from date of shipping when stored at -20°C.
RefSeq:	NM_178609.5
RefSeq Size:	5476 bp
RefSeq ORF:	2715 bp
Locus ID:	52679
UniProt ID:	Q6S7F2
Cytogenetics:	10 57.74 cM
MW:	99.5 kDa

Gene Summary:

Atypical E2F transcription factor that participates in various processes such as angiogenesis, polyploidization of specialized cells and DNA damage response. Mainly acts as a transcription repressor that binds DNA independently of DP proteins and specifically recognizes the E2 recognition site 5'-TTTC[CG]CGC-3'. Directly represses transcription of classical E2F transcription factors such as E2F1. Acts as a regulator of S-phase by recognizing and binding the E2-related site 5'-TTCCCGCC-3' and mediating repression of G1/S-regulated genes. Plays a key role in polyploidization of cells in placenta and liver by regulating the endocycle, probably by repressing genes promoting cytokinesis and antagonizing action of classical E2F proteins (E2F1, E2F2 and/or E2F3). Required for placental development by promoting polyploidization of trophoblast giant cells. Also involved in DNA damage response: up-regulated by p53/TP53 following genotoxic stress and acts as a downstream effector of p53/TP53-dependent repression by mediating repression of indirect p53/TP53 target genes involved in DNA replication. Acts as a promoter of sprouting angiogenesis, possibly by acting as a transcription activator: associates with HIF1A, recognizes and binds the VEGFA promoter, which is different from canonical E2 recognition site, and activates expression of the VEGFA gene. Acts as a negative regulator of keratinocyte differentiation.[UniProtKB/Swiss-Prot Function]

Product images:

Circular map for MR222951